

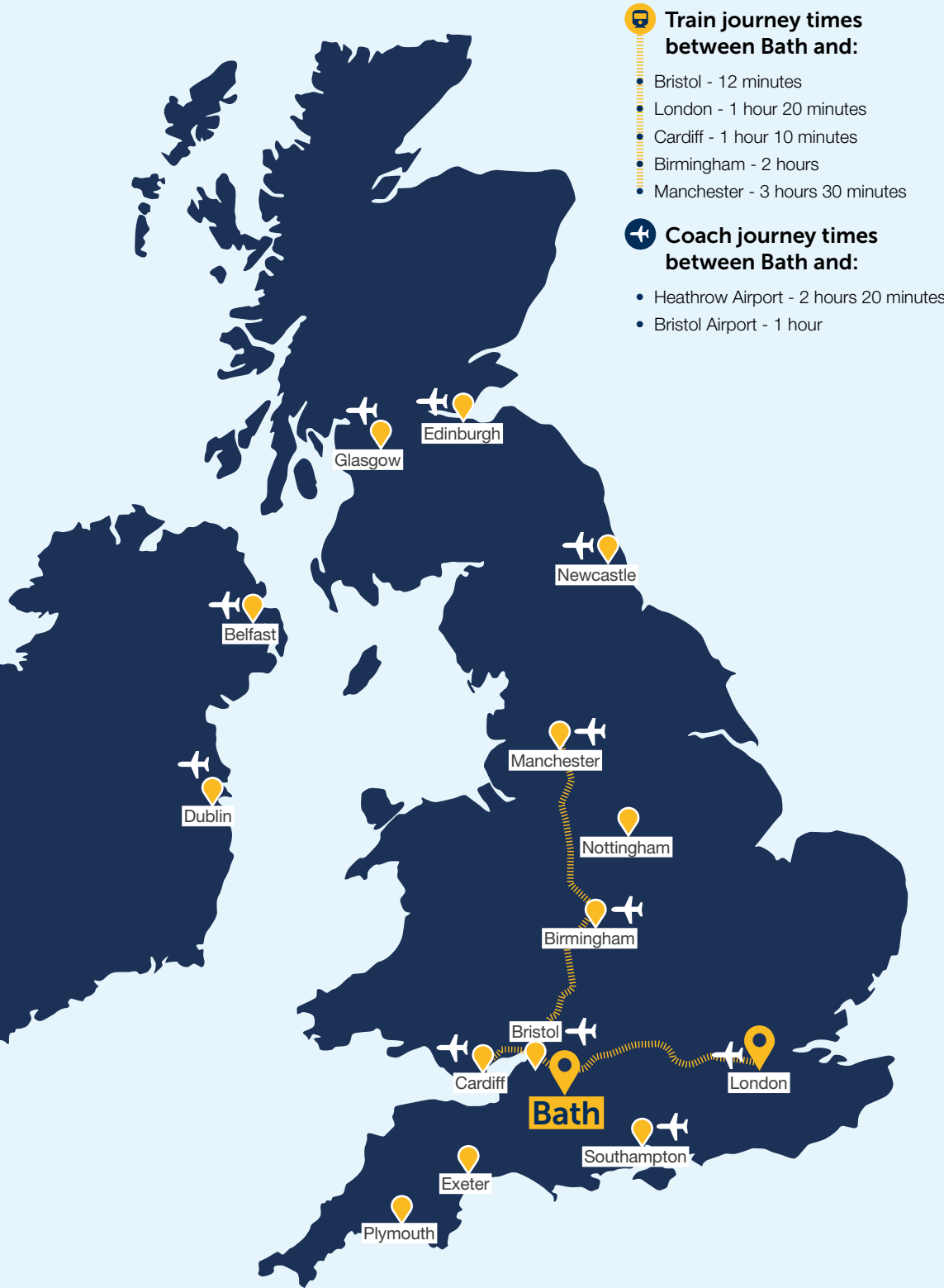
# Undergraduate Prospectus 2025



#BelongatBath



UNIVERSITY OF  
**BATH**





## Contents

Your education	<a href="#"><u>8</u></a>	Living in Bath	<a href="#"><u>36</u></a>
Preparing for your career	<a href="#"><u>12</u></a>	Protecting our environment	<a href="#"><u>41</u></a>
Supporting you	<a href="#"><u>18</u></a>	Applying to Bath	<a href="#"><u>42</u></a>
Financial support	<a href="#"><u>22</u></a>	Tuition fees	<a href="#"><u>46</u></a>
Social life	<a href="#"><u>24</u></a>	<b>Course finder</b>	<a href="#"><u>48</u></a>
Sport and fitness	<a href="#"><u>26</u></a>	Experience the University	<a href="#"><u>94</u></a>
Our campus	<a href="#"><u>28</u></a>	Important information	<a href="#"><u>96</u></a>
Your accommodation	<a href="#"><u>32</u></a>		

Scan QR to find out more about studying at Bath.

[go.bath.ac.uk/study-at-bath-25](https://go.bath.ac.uk/study-at-bath-25)





**Ranked 5<sup>th</sup>**

in the Complete University  
Guide 2024<sup>1</sup>



**Ranked 6<sup>th</sup>**

in the UK in the Guardian  
University Guide 2024<sup>2</sup>



**Ranked 8<sup>th</sup>**

in the UK in The Times and  
The Sunday Times Good  
University Guide 2024<sup>3</sup>



**Awarded**

**Triple Gold**

in the Teaching Excellence  
Framework (TEF) 2023<sup>4</sup>

<sup>1</sup>127 of our subjects are ranked in the top ten.

<sup>2</sup>Ten of our subjects are ranked in the top five.

<sup>3</sup>Nine of our subjects are ranked in the top five.

<sup>4</sup>For the overall assessment and the two underpinning assessments of student outcomes and student experience.



## Ranked in the **Top 150**

universities in the world  
in the QS World University  
Rankings 2024



## Top 5

for graduate or career  
prospects in three major  
national league tables<sup>5</sup>

## Ranked in the **Top 100**

for employer reputation in  
the QS World University  
Rankings 2024



## Ranked 2<sup>nd</sup>

safest university town or  
city in England and Wales  
by the Complete University  
Guide in 2023

<sup>5</sup>We're ranked 4th in the Complete University Guide 2024, 5th in the Times and The Sunday Times Good University Guide 2024, and 5th in the Guardian University Guide 2024.



# Welcome to the University of Bath

"Let me just share with you two points which students and graduates of the University of Bath repeatedly comment on: Firstly, our size and environment mean that Bath is both welcoming and supportive. Secondly, our internationally recognised research and the quality of our teaching means that students feel they are prepared to make a real impact wherever they go. It is therefore not surprising to learn that Bath graduates are in demand by employers worldwide."

**His Royal Highness The Duke of Edinburgh**

KG GCVO, Chancellor, University of Bath





# Your Education



What is this Digital Twin representing

Which section of the Digital Twin

What is the intent of the Digital Twin?

What is the equivalent process?

What are the key components to build the Digital Twin Database, models, sensors etc

What is the link/relationship between the physical and digital?

**“** The Vertically Integrated Project has provided an opportunity for enormous personal and professional development. I have developed transferable skills, such as communication and the ability to collaborate within a team through working with really inspiring fellow students. **”**

**Ella**, BSc (Hons) Sport and Exercise Science

## Your learning experience

Our expert teaching staff will guide you in your learning using a range of methods, including:

- lectures and tutorials
- laboratory sessions
- online learning resources and activities
- problem-solving scenarios
- project work
- collaborative assignments

We supplement your in-person learning with online teaching that includes both live, interactive sessions – allowing you to share and explore ideas in a group – and structured, independent self-study.

## Learn from the experts

Our teaching staff are experts in their subject areas and their practice. Their connections to industry and research around the world mean you'll always be taught the most up-to-date topics. They'll encourage and challenge you as you take your next steps towards a rewarding career.

We'll also assign you a Personal Tutor. This is a member of the teaching staff in your department who knows your subject and the challenges you could face. They can guide you in your academic progress and support your personal and professional development throughout your time at Bath.

## Your degree, your choice

We design and update our courses carefully to make sure you have the key knowledge, skills, and attributes for further study or the world of work.

On most of our courses, you can choose from a range of optional units. This flexibility enables you to specialise in your chosen path and helps you get to where you want to go after university.

## Help shape your course

At Bath, we don't just welcome your feedback; we actively seek it. There are several ways we do this, including through surveys and student representatives, who'll make sure your voice is heard.

You can become an Academic Rep to help make sure students' opinions are heard at committee meetings or lead a Student Change Project to make the improvements your fellow students suggest.

We use your feedback to improve every aspect of your experience, including what you learn, how you're taught and assessed, and the services and facilities we provide to support you.



## Practical experience as part of your degree

All our undergraduate course areas offer a placement<sup>1</sup> (sometimes called an internship or year in industry) or a study abroad option, and over two-thirds of our students take up these opportunities.<sup>2</sup>

Find out more on page [12](#).

## Develop your skills

As a Bath student, you'll have the opportunity to develop your academic and personal skills by fitting your own development programme around your studies. You'll have access to the 'MySkills' website where you can sign up for online and in-person skills development sessions, including one-to-one writing support, and find additional resources to support your studies, your health, and your wellbeing.

You'll develop the following skills:

- **academic** - writing effective assignments and notes, applying critical thinking, and building on your understanding of maths and statistics
- **digital** - developing your digital skills so you can study and work in today's fast-changing digital world
- **employability** - recognising and developing the skills employers want and presenting them effectively
- **language** - learning or improving a foreign language or English and developing intercultural awareness to support your employability
- **health and wellbeing** - developing ways to look after your mental health and enrich your life

<sup>1</sup>Social Work and Applied Social Studies and Pharmacy have mandatory work-based learning as part of the degree, not year-long placements. FdSc Sport (Sports Performance) has a placement when taken with a bachelor's top-up.

<sup>2</sup>Over two-thirds of Bath-based students graduated from a course with a placement or study abroad option in the 2020/21 academic year

## Collaborate on research projects to solve real-world problems

In addition to your studies, you could take part in a Vertically Integrated Project (VIP) at Bath, working with postgraduate students, researchers, and members of staff. They're a great way for you to apply research techniques to real-world problems while developing your collaboration, communication, and adaptability skills.

Our VIPs often focus on addressing global issues at a local level, for example, creating carbon-neutral communities or developing technology for social care.



Scan QR to find out more about skills development

[go.bath.ac.uk/skills-for-success-25](https://go.bath.ac.uk/skills-for-success-25)





## Academic facilities

We're continually investing in our teaching buildings, informal learning spaces, and laboratories, which you'll have access to throughout your course.

Depending on your course, you'll also be able to use specialist facilities like our acoustics lab, motion capture system, and Virtual Learning Environment, which will give you access to course materials, quizzes and recorded lectures for your subject.

## Study spaces

If you study at Bath, you can use our informal and well-equipped study spaces on campus and in the city centre.

You can book many of these study spaces in advance, and with access to University Wi-Fi, you can plug in your laptop, get all your files and resources, and print your work whether you're on campus or not.

## The Library

Our 24-hour library, at the heart of campus, provides a variety of study spaces for group and individual work. It's open all year around, even at weekends and during public holidays.

There are copy, print, and scanning facilities, and you can borrow or access print books, e-books, electronic journals, specialist databases, and academic publications. Our library staff can source alternative formats of print materials, and our subject librarians, who have specific knowledge about your area of study, offer one-to-one help and support to teach you about library resources, services, and information skills.



# Preparing for your career

## Gain professional experience on a placement

Most of our undergraduate courses give you the chance to take a professional placement of between six and 12 months.<sup>1</sup> Combining academic knowledge with valuable experience in a relevant workplace, a placement is a great opportunity to meet people in the industry and set yourself apart from other applicants. It's why our graduates are some of the most sought-after in the country.<sup>2</sup>

Some placements are paid, so you could earn a salary while you work, and you'll normally pay a reduced tuition fee while you're on your placement. You could even apply for funding to help you take a placement overseas.

## Specialist placement support

The teams in each faculty are specialists in your area of study and its employers. While securing a role is your responsibility, they'll support you every step of the way, even while you're on your placement. They are there to help you:

- find a placement
- work on your CV
- develop your interview skills
- resolve any concerns or questions you have throughout the process

As a Bath student, you can use our industry connections to find a placement. We've been building our relationships with businesses through placements for almost 60 years, so you don't need to have your own connections to find the placement you want.



<sup>1</sup>Placements are not guaranteed.

<sup>2</sup>Ranked 5th for career prospects after 15 months, by the Guardian University Guide 2024

## Build valuable professional connections

Here are some of the organisations<sup>3</sup> our students have earned placements with:

### Banking and consultancy

- BNY Mellon
- Deloitte
- EY
- Citi
- Oliver Wyman
- PWC

### Charity and non-governmental organisation (NGO)

- Great Ormond Street Hospital
- Development Initiatives
- SafeLives

### Fast-moving consumer goods (FMCG) and retail

- Ferrero
- Kraft Heinz
- L'Oréal
- Unilever
- Vita Coco
- Wild Cosmetics

### Pharmaceutical and science

- Abbott Diabetes Care
- GlaxoSmithKline
- Merck Sharp & Dohme
- Science Technology Facilities Council

### Public sector

- House of Commons
- Metropolitan Police
- NHS
- Home Office
- Office for National Statistics

### Technology and Design

- Amazon
- IBM
- Nomura

### Sports and education

- Millfield School
- Southampton Football Club
- London Sport
- Hawkeye Innovations

### Research placements

- Harvard University
- Swedish Winter Sports Institute
- Auckland University of Technology

## Studying abroad

Many of our courses give you the opportunity to study abroad as an alternative to taking a placement. We have partner institutions across the globe, including in Europe, Australia, Asia, Latin America, Canada, and the USA.

Studying abroad is your chance to experience a different part of the world and make new friends while getting skills and experience that employers love.

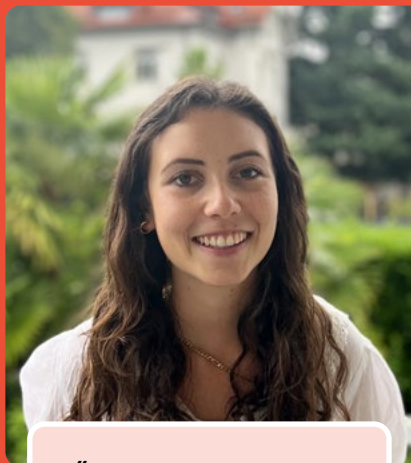
With our partners, we'll support you as you apply, find funding, and while you're abroad.



<sup>3</sup>Company names do not constitute any endorsement or sponsorship by the companies.



# Placement Experiences



***"I decided on a research placement because I knew that the skills and experience gained would complement my final year at Bath."***

## Valeria

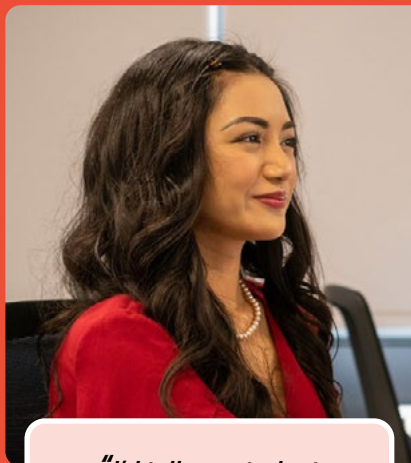
### BSc (Hons) Psychology

During my placement year, I decided to move overseas and take an intern role at New York University (NYU).

I was a research assistant at The Infant Studies of Language and Neurocognitive Development (ISLAND) lab at NYU, where my main responsibilities included data entry and coding, administrative tasks such as the organisation and scheduling of participants, and finally community engagement through the website and social media.

The first weeks were rocky, as it always is when moving to a new place - with bank issues, getting a new phone number, adjusting to the time difference, and being away from friends and family. Thankfully, I had an extremely flexible and understanding lab manager who encouraged me to take the time to settle before dedicating myself fully to the lab.

Spending my placement year in the States has been incredibly eye-opening and a great experience to see how a different part of the world lives.



***"I'd tell any student thinking about a placement year 'go for it!'. There are so many benefits for your career that stem from doing a placement."***

## Chelsea

### MEng (Hons) Civil and Architectural Engineering

I chose to study at Bath because the teaching and research is unmatched, especially for my degree.

Throughout my second year, we received regular lists of companies looking to hire placement students. The Faculty placements team also had a range of resources and guides to help us through the entire process. From first-draft CVs to interview preparation, the support was there.

My placement has helped me understand the importance of what we learn at university, and especially when applied in the real engineering world. When I returned to university, I was more focused and motivated to complete my studies.

The technical, management and personal skills I developed will make me a more valuable team member. Overall, a year's placement experience will give me the biggest advantage. It will help me secure a graduate job as experience is one of the things that employers are looking for the most.



***"If you have a good idea that has the potential for growth, there are a lot of ways to raise funds and get your business started with support from the University."***

## George

### BSc (Hons) Biology

I wasn't sure what I wanted to do during my placement year, but I knew that I wanted some experience outside of the lab.

After some research online, I came across the AI Tech World event. I decided to get in contact with the organisers who explained that I could attend as a volunteer.

After spending some time handing out event passes, I was given access to explore the event and network face-to-face with some of the top people in the AI industry.

I could see that these events could really enhance the student experience. I got in contact with 10 events companies and asked if they'd be interested in me placing student volunteers with them in exchange for tickets. They all said yes, which is where my new business idea started.

Working with the support of the University's Centre for Learning and Teaching (CLT), I was able to place 70 students across 10 different conferences in London in the first semester of the 2018/19 academic year.



***"The Placement team, who helped me secure both placements, have provided invaluable support through mock interviews, checking CVs and cover letters, and meetings to discuss applications."***

## Beth

### BSc (Hons) Business

With the opportunity to do two six-month placements and study abroad for a semester, I immediately understood how valuable a degree from Bath would be. The opportunity to learn in a real working environment and gain insight into a potential career has been invaluable.

For my first placement, I worked at Babybel as the assistant brand manager. The role was very varied. I spent time in trade marketing, sales and e-commerce, allowing me to figure out which career path I'd prefer.

For my second placement, I worked in London, as a Research Analyst at Q5. Q5 is a management consultancy focusing on organisational design, strategy, change, and culture.

My second placement employer offered me a graduate role. This allowed me to focus on my final year studies and make the most of my time on exchange in Canada.

I would not have been able to achieve what I have without the skills and experience I've gained at Bath.



## Building your skills

### Skills support

We can help you develop skills that will help you succeed in your studies and in your career. Find out more on page [10](#).

### Internships and jobs

Our Careers team promotes internships and graduate opportunities throughout the year, so you can learn valuable workplace skills to take with you after graduating. You can also apply for part-time jobs, on campus and in the city, through the Students' Union.



## Careers advice

Our Careers team is here to support you at Bath, after you graduate, and throughout your working life.

Using tailored online resources, workshops, group sessions, and one-to-one appointments, Careers can help you:

- decide on your goals
- learn how to search for a job
- prepare an application, including developing your CV and cover letter
- use LinkedIn and develop a professional presence online
- prepare for interviews and other recruitment experiences

The Careers team also holds employer events, skills development workshops, and careers fairs to help you choose an area to work in, meet recruiters, and apply for jobs.

**“ The Careers Service has been instrumental in providing me with a range of support and resources throughout the process of applying for graduate roles. ”**

**Sarah, BSc (Hons) Psychology**



## Starting your own business

If you want to start your own business or develop your entrepreneurial skills, you can visit our Enterprise Lab on campus and in the city-based Innovation Centre.

Our Student Enterprise team offers an Entrepreneurship Programme alongside your studies. This includes talks and masterclasses from graduate entrepreneurs, workshops, mentoring, funding, networking, startup placements, and work opportunities.

You could also meet like-minded students through the Bath Entrepreneurs student group.



## Support from our alumni

### Networking opportunities

Bath students and graduates can use our networking site, Bath Connection, to get in touch with alumni working in amazing places around the world. You can ask questions about working in a particular industry or find a mentor who wants to help you succeed.

You can also join our Get Connected networking events, where you can meet some of our most successful alumni and hear their tips for getting ahead.

### Investing in your future

Our alumni also support our students through donations. These help to pay for some of the experiences that make Bath so special, as well as funding scholarships and awards to help students and graduates reach their full potential.



**“I loved studying at Bath. Every summer after exams were done, my friends and I would have a celebration picnic by the lake in the sunshine. It was something I always looked forward to!”**

**Beth, BSc (Hons) Physics with Astrophysics 2019**

Scan QR to find out more about careers support.

[go.bath.ac.uk/careers-25](https://go.bath.ac.uk/careers-25)





# Supporting you



**“**It's very important to consider good pastoral support when researching universities. Support for every aspect of life at Bath is available and free to access, you only need to ask.**”**

**Richard**, BSc (Hons) Computer Science

## Before you arrive

Contact us with questions and concerns at any point and we can help you:

- understand the application process
- prepare for the transition to university
- arrange support if you have a disability

We offer free events to help you see what it's like to study at university. See page [96](#) for more information.

## Getting your visa

If you're an international student, you'll need a visa to study in the UK. You can contact our Student Immigration Service for advice before you arrive and while you're here.

You can also contact the British Embassy, High Commission, or Consulate in your own country for advice about coming to the UK as a student.



## Someone to talk to

In our community, there's always someone available to talk to.

### Talk to your Personal Tutor

You'll be allocated an academic member of staff from your first year, known as a Personal Tutor. They are there to support you with your academic and personal development.

### Talk to your Peer Mentor

If you need to talk to someone about what you are going through as a new student, you can speak to your Peer Mentor. Your Peer Mentor will be a current student, in your department, who has already been through their first year at Bath. They'll guide you through any problems you have or suggest other people to talk to if you need specific support.

### Talk to a member of staff

Our Student Support teams provide advice and guidance for all students, including counselling, disability support, money management, and international student advice.

The Student Support Advice Team is here 365 days a year to help with anything that's on your mind, including homesickness, bereavement, relationship problems, loneliness, and mental health problems.

If you feel stressed, anxious, or depressed, you can get free, confidential help and practical support from our Wellbeing Practitioners, talking therapy from our Therapeutic Services, or support from our Mental Health team.

Our confidential 'Talk Now' service is also open 24 hours a day for immediate advice throughout the year and from anywhere.

### Talk to another student

The Students' Union runs Nightline, which offers confidential listening, support, and practical information for students, from students. They won't judge you or tell you what to do. They'll simply listen.





## Specific support

### Medical and dental services

The Medical Centre and Dental Centre on campus provide health services and treatment, including doctor's appointments and prescriptions. You can register as a patient when you arrive at Bath.

### Students with money worries

We don't want money worries to affect your student experience, so if you need money management advice, hardship funding, or help finding additional income, you can speak to the Money Advice Service.

See page [22](#) for more information on funding your studies.



### International students

About one-third of our students come from outside the UK, representing 153 nationalities around the world.<sup>1</sup>

When you arrive in England, we can collect you by bus from London Heathrow Airport and take you straight to the University.

During your first year at Bath, we organise information sessions, tours of the campus and city, and social events where you can meet other students, learn about British culture, and improve your conversational English.

**Scan QR** to learn how we support international students.

[go.bath.ac.uk/international-25](https://go.bath.ac.uk/international-25)



### Disabled students

If you're a disabled student, we'll help you, both through the application process and before you start your studies, to make sure all the necessary support is in place for you to succeed on your course. Support is available based on your needs and could include:

- creating a Disability Access Plan (DAP) for how your department will support you through your studies and exams
- access to specialist or assistive software or equipment
- financial support, including diagnostic fee support and help with applying for Disabled Students' Allowance
- access to accommodation adjusted to your needs

If you have disclosed an Autism Spectrum Condition, social anxiety, or social phobia, we can pair you up with a Campus Buddy to help you settle into university. Campus Buddies are current students who have completed training to help you with the social and practical aspects of student life, like navigating campus and joining clubs.

You can also join our Autism Social Group that arranges activities.

<sup>1</sup>32% of our 20,311 core students across all levels of study are from outside the UK (student numbers on 1 December 2022).



### Care leavers, estranged students, refugees and young adult carers

If you're estranged from your family or are a care leaver, refugee, or young adult carer, we'll put you in contact with a member of our Student Retention and Success team during your application process. They'll help you get any support and advice you need, including extra financial support if possible.

### LGBTQ+ students

If you'd like to talk to someone about your sexual orientation or gender identity, Student Support offers one-to-one support, counselling, and advice for LGBTQ+ students.

### Faith-based support

If you're looking for personal or spiritual advice, you can speak to our University Chaplains who are available on weekdays to help students of all faiths and none.

### Student parents

If you have children from six months old to school entry age, you can apply for childcare at our on-campus nursery as soon as you're offered a university place.

Scan QR to see more about how we'll support you during your studies.

[go.bath.ac.uk/supporting-you-25](https://go.bath.ac.uk/supporting-you-25)



# Financial Support

## Scholarships and bursaries

### Income-assessed scholarships and bursaries

You could be eligible for funding based on your household income.<sup>1</sup> Our support for Home students starting in 2024 includes:

- the Gold Scholarship Programme, a £5,000 bursary for each year of study with activities to enhance your development and career opportunities
- the Bath Bursary, worth up to £2,750 in Year 1, and up to £2,000 each year of study from Year 2 onwards
- the Accommodation Bursary, a reduction in your first-year University-housed accommodation fees
- the Placement Bursary, available to Bath Bursary and Gold Scholarship recipients, worth up to £2,000 during an unpaid placement or study abroad year
- applicant travel bursaries to help you get to an undergraduate interview, Applicant Visit Day, or Applicant Campus Visit

If you're an international student and you demonstrate outstanding academic achievement, you could be eligible for a scholarship to help pay for your tuition. Our current funding opportunities are:

- the Chancellor's Scholarship – a first-year tuition fee waiver worth up to £2,000
- the International Baccalaureate 50th Anniversary Scholarship – a first-year tuition fee waiver worth up to £8,000 (when combined with the Chancellor's Scholarship)

### Corporate scholarships

You may be eligible for funding worth up to £3,000 a year through our partnerships with businesses. These awards are sponsored by leading global organisations and usually include placement and professional opportunities. Current partners include JP Morgan, AB InBev, and Santander.

**"Being a Gold Scholar made me feel supported academically, socially, and financially. Being surrounded by others with similar backgrounds made me feel more included."**

**Daniel, MEng (Hons) Civil Engineering**



### External scholarships

You can also apply for scholarships from organisations not affiliated with the University.

### Sports and arts scholarships

If you're talented in the arts or sports, you could be eligible for a scholarship, including:

- Sporting Scholarships, worth up to £5,000, to help competing athletes to study and train at Bath
- Arts Scholarships worth up to £1,000
- Music Tuition Awards to help pay for music tuition at the University

<sup>1</sup>University funding is subject to change. You can find the most up-to-date information on our website.



## Funding for care leavers, estranged students, young adult carers, and refugees

We offer:

- Home UK Care leavers, Foyer residents, estranged students and refugees up to £7,000<sup>2</sup> over a 5-year course
- Home UK Young Adult Carers (YAC) £500 for each year of study

## Student loans

Depending on where you live, you might be able to apply for a Tuition Fee Loan to cover the cost of your tuition fees.

If you're a Home student, you may be able to apply for a Tuition Fee and Maintenance Loan from the UK government to help with your costs. The support you can get varies between the different UK devolved nations. If you're an EU student, your tuition fee status could be Home or Overseas depending on your circumstances.



Visit [gov.uk/student-finance](https://gov.uk/student-finance) for information on student loans if you're a Home or EU student.

If you're an international student, you might be able to apply for funding through your own government or from private companies.



Visit [ukcisa.org.uk](https://ukcisa.org.uk) for information on funding if you're an international student.

## Additional support

Our Student Money Advice team can give you support, advice, and financial assistance. This includes:

- interest-free, short-term loans
- hardship funding
- budgeting advice

## Part-time work

Working part-time during your studies is a great way to earn extra money and can make you more employable after university. The University employs over 2,000 students:

- in our campus bars, cafés, and shops
- as Student Ambassadors supporting Open Days and other student recruitment activities



Scan QR to find out more about the financial support available.

[go.bath.ac.uk/financial-support-25](https://go.bath.ac.uk/financial-support-25)



<sup>2</sup>£1,000 for each academic year plus £1,000 for start-up costs, and £1,000 on graduation.

# Social Life



## Freshers' Week

The start of your first semester is known as Freshers' Week. It's a series of optional sports, arts, and social events run by the Students' Union at Bath. It's a great opportunity to meet new people and to sample some of our lively and welcoming communities.

## The Students' Union (The SU)

As a student at Bath, you'll automatically be part of The SU. Run by students for students, The SU believes that when students come together, they can shape the communities they are part of for the better.

## Student groups

If there's something you're passionate about doing, there's a good chance The SU has a group for it.

The SU offers over 180 student groups based on interests, activities, and culture, to help everyone find somewhere they belong.

If you have an idea for a new student group, you can also get support with setting it up and finding members.

## Student Voice

The SU Officers and student representatives champion the student voice across the University.



## Arts

As a Bath student, you're also invited to explore the facilities at The Edge, our SU-led creative hub on campus.

At The Edge you can:

- get music tuition with expert tutors, subsidised by the University
- take dance, art, and wellbeing classes
- use music rehearsal rooms to practise solo or as a group
- see exhibitions, plays, concerts, and other performances
- take part in creative workshops to find new ways of problem solving

## Arts Scholarships

If you're keen to develop your creative interests, you can apply for an Arts Scholarship. You can apply in any year during your time at Bath and could get funding to support your music tuition, time with an artistic mentor, and opportunities to collaborate with other creative people.

See page [22](#) to find out more about financial support.

## Be a part of our efforts to tackle climate change

By coming to Bath, you're joining a community that's passionate about fighting the climate crisis. There are many ways you can be involved. You can:

- join a society or student group to lead change
- take part in projects to gain valuable real-world experience
- take on paid roles to deliver peer-to-peer support for change
- connect with students beyond Bath as part of bigger events and opportunities
- live sustainably with support and guidance on how to do so

## Develop your creative skills

The SU Arts Team can also help you develop skills to support your studies and career. You can volunteer to help at events, build presentation and public speaking skills, attend creative writing sessions to support academic studies, or learn new craft skills to improve wellbeing.

Scan QR to find out more about making the most of your time at Bath.

[go.bath.ac.uk/social-25](https://go.bath.ac.uk/social-25)

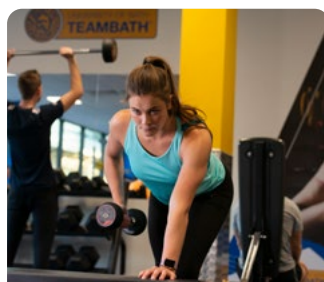




# Sport and fitness



**Our world-class £35 million Sports Training Village** is for everyone, from complete beginners to performance athletes.



**The Team Bath Gym and Fitness Centre** has 200 workout stations across three zones, plus group exercise studio spaces. Requires a gym membership.

## Join our active community

If you study at Bath, you can choose from more than 50 sports clubs to join. Run by The SU, each club welcomes new members whether you're a beginner or a professional.

If you want to get more competitive, you can try out to represent Bath in British Universities and Colleges Sport (BUCS) matches.

The SU runs Bath Active, a free social sports programme with regular fitness sessions.

## Sports facilities and services

You can use the Team Bath Sports Training Village (STV) to keep fit, play sports, socialise, and get training and fitness support from expert members of staff, whatever your ability. Use of the Team Bath Gym and Fitness Centre requires a paid membership, but many of the STV's facilities are free to use with your Student Sports Pass.



**Our multi-purpose sports hall** has a 2,000-seat arena with sprung wood floors for badminton, volleyball, frisbee, netball and other sports. Free-to-use with your Student Sports Pass (booking required).



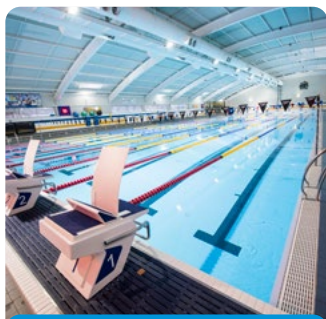
**Rugby, football, lacrosse, and cricket pitches** and a 3G pitch and training areas.

Scan QR to find out more about sports at Bath.

[go.bath.ac.uk/sports-25](https://go.bath.ac.uk/sports-25)



## Sports Training Village (STV)



**Our Olympic-sized London 2012 Legacy Pool** is available to everyone for regular lane-swimming. Free-to-use with your Student Sports Pass.



**There are 18 tennis courts** (eight indoors and ten outdoors) with different surfaces. Free-to-use with your Student Sports Pass.



**Our two all-weather, floodlit hockey pitches** are also used for recreational five-a-side football. Free-to-use with your Student Sports Pass.



**The 400-metre outdoor athletics track** is floodlit and overlooked by a viewing balcony. Free-to-use with your Student Sports Pass.



**Our 300m2 Judo dojo** is based on a traditional Japanese style and is home to a number of martial arts clubs.



**Eight indoor fencing pistes** are part of our Pentathlon Hall.



**Our indoor facilities** include a 120m indoor sprint track, throwing and jumping facilities, and a Performance Hub with a squad weight training area.



**We have three shooting ranges**, one indoors and two outdoors.



**Physiotherapy, strength and conditioning, hydrotherapy and sports massage** for members of the high-performance sports squads.



# Our campus

Our campus plays a huge part in bringing together the University community, with lots of places to meet with friends, relax in green spaces, buy food and drink, and study.

City of Bath



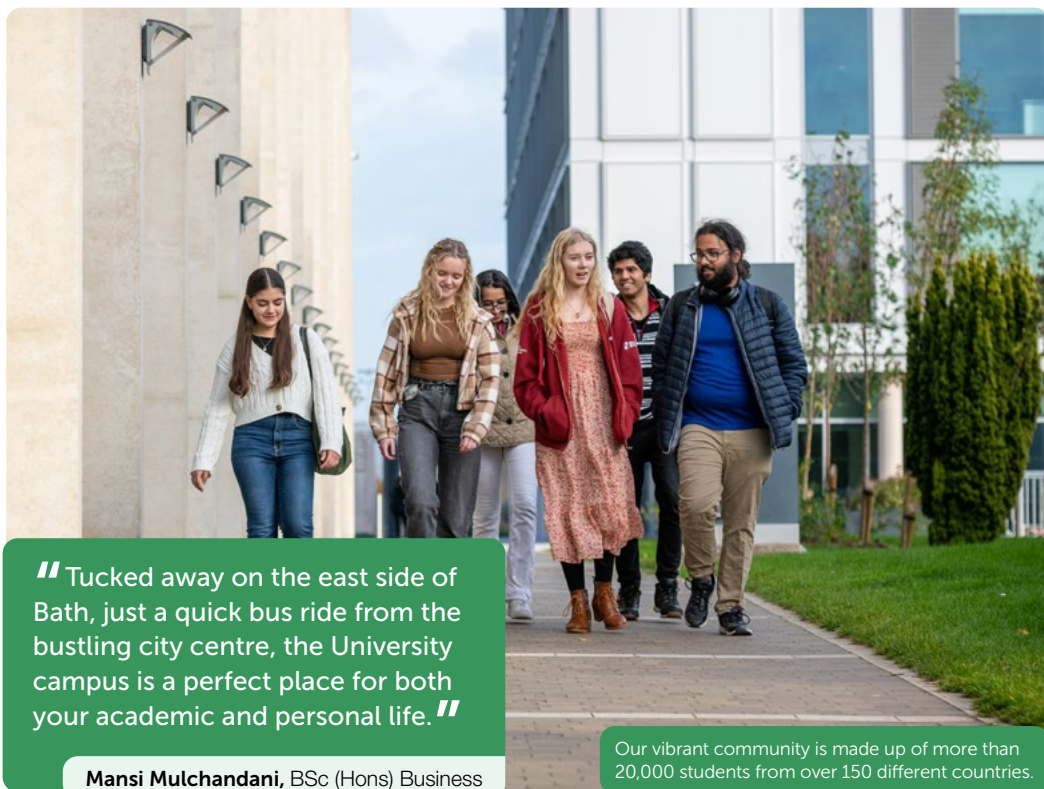
## Key

- Accommodation
- Arts and creativity hub
- ☺ Cafés, restaurants, bars
- 🛒 Shops
- 🏥 Medical/dental centre





At the centre of campus is the Parade, a wide walkway with access to the library, Students' Union building, Student Support, as well as cafés, shops, and bars.



**"** Tucked away on the east side of Bath, just a quick bus ride from the bustling city centre, the University campus is a perfect place for both your academic and personal life. **"**

**Mansi Mulchandani**, BSc (Hons) Business

Our vibrant community is made up of more than 20,000 students from over 150 different countries.



The Skyline Walk is accessible from campus and offers beautiful views over the city.



The campus is home to an array of restaurants, bars, and cafés serving a wide choice of food and drink.



Our many green spaces include the amphitheatre overlooking our beautiful lake.

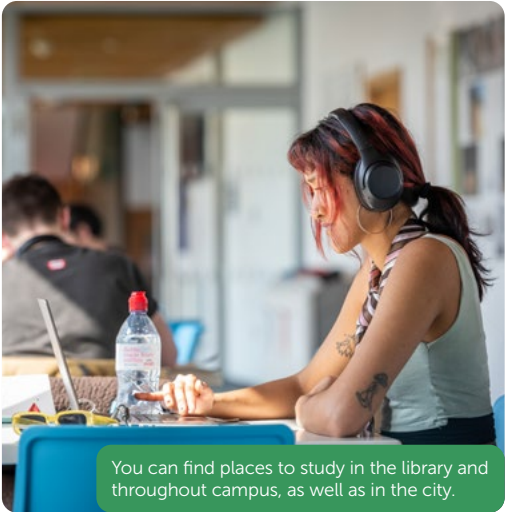




Our campus is home to our Sports Training Village and The Edge arts centre.



Buses from the campus into Bath take around 20 minutes during term time. You can also choose to cycle or walk.



You can find places to study in the library and throughout campus, as well as in the city.



## Safety and security

Whether you're on campus or in University buildings in the city, you'll have the support of our Security team, day or night. All security staff are trained in first aid and mental health first aid. They can offer welfare support and help you with crime prevention.

Scan QR to take a virtual tour of our campus.

[go.bath.ac.uk/campus-25](https://go.bath.ac.uk/campus-25)



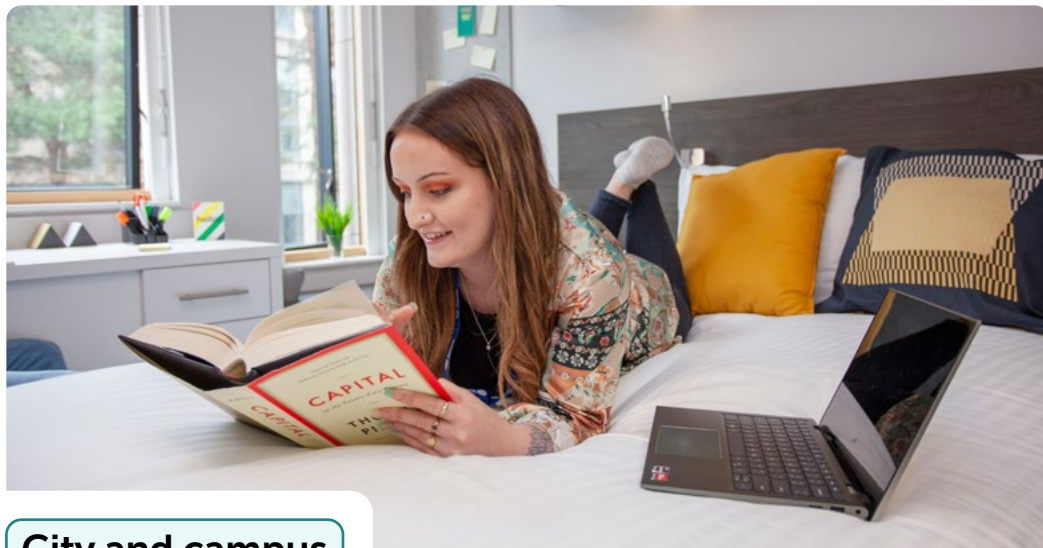


# Your Accommodation



**"** Living in University accommodation has helped me to become more independent. Even though it's my first time away from home, I never feel alone because I have my flatmates and there's always someone to talk to. **"**

**Daniela**, BSc (Hons) Biomedical Sciences



## City and campus accommodation

We have undergraduate accommodation in the city centre and on campus, with great transport links between them. Whether you end up living in the city or on campus in your first year, you'll have everything you need close by. On campus, you'll be a short walk away from the library, sports facilities, and Students' Union. In the city, you'll benefit from having cafés, shops, bars and other world-famous attractions on your doorstep.

Most of our students live in houses or flats with bedrooms grouped around communal kitchens or social spaces. You can also apply to live in accommodation that comes with Eat and Drink credit to use in our food and drink outlets on campus.

## Our guarantee

We guarantee campus or city accommodation to all our first-year full-time undergraduate students if:

- you receive an offer and make us your firm choice institution - we can't guarantee accommodation if you make us your insurance choice
- we receive your application for accommodation before the accommodation application deadline on the 1 July

If you're a Care Leaver, former Foyer resident, or estranged student, you're guaranteed a place in university accommodation for 365-days a year for the duration of your course.

Once you've accepted Bath as your firm choice, we will let you know when and how to apply for accommodation.



## When to apply

Applications for undergraduate accommodation opens on the 8 May with the deadline for guaranteed accommodation on the 1 July.





## Finding the right home

We're committed to providing a safe environment for students to live in. We value diversity and inclusivity and want everyone to be treated with respect. If you're an eligible first-year undergraduate, you can tell us if you'd prefer to live in accommodation that's designated as:

- quiet
- alcohol free
- for mature students
- single gender
- LGBTQ+

If you have a disability or diagnosed medical condition, you can live in one of the wheelchair-accessible or ensuite bedrooms, or a room with extra space for special equipment. We can also help if you:

- are transitioning gender as we may be able to place you in an ensuite bedroom or a studio
- identify as non-binary or intersex as we can look at allocating you to a flat with other non-binary or intersex students

To speak to someone about applying for accommodation, contact our ResLife team at [reslife@bath.ac.uk](mailto:reslife@bath.ac.uk)

## Supporting you every step of the way

We're here to help you to settle into university life as quickly and easily as possible. You'll find support and assistance in our accommodation centres on campus and in the city.

If you need to speak someone with a similar background, our Champions for race equality and LGBTQ+ make sure all students find our accommodation supportive and welcoming.



Our ResLife Ambassadors can help you meet people, keep healthy, and find balance with your studies and personal life.

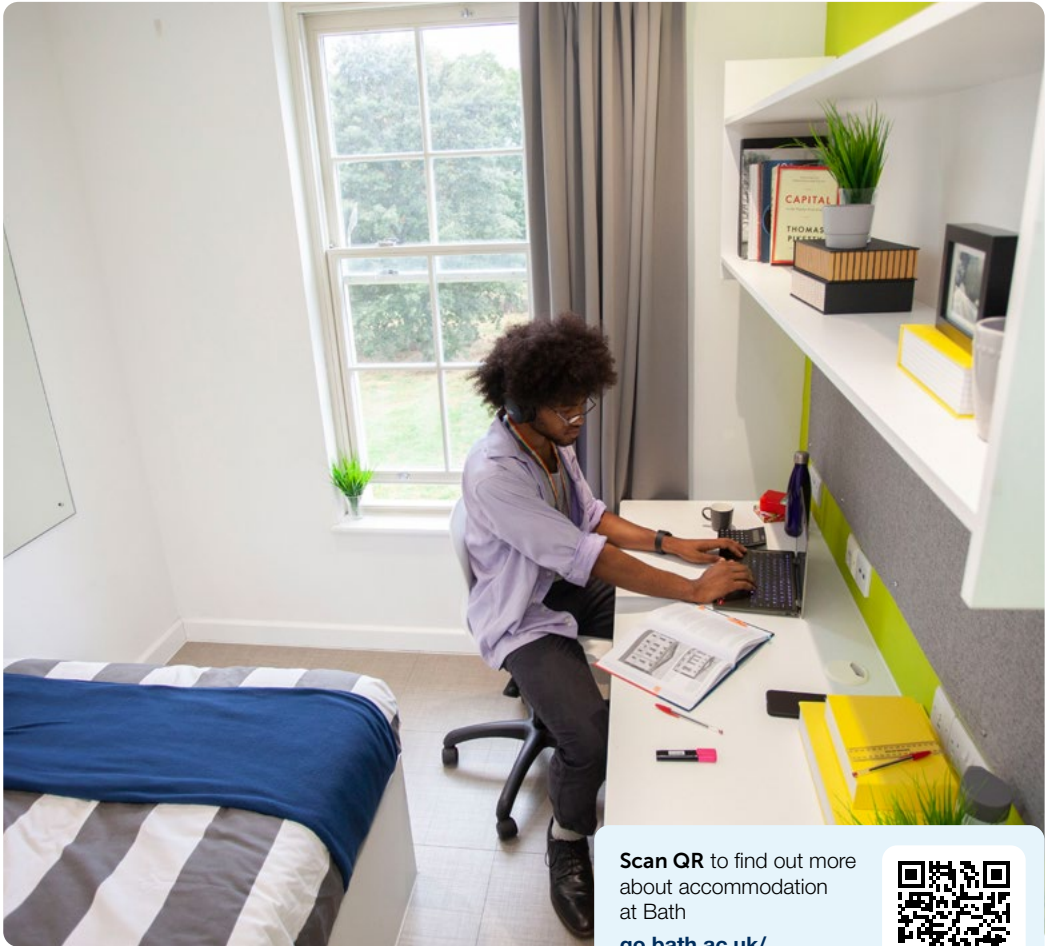


**Accommodation price ranges**  
(September 2023 to June 2024)

Room	Weekly price range	Yearly price range
Ensuite room (with toilet and shower)	£107 to £219	£4,891 to £9,706
Standard Room (shared bathroom)	£83 to £177	£3,154 to £6,916
Studio Room	£235 to £246	£8,930 to £9,348

Price ranges shown are for the 2023/24 academic year and include both self-catered options and options that include Eat and Drink credit.

See page [22](#) for information about financial support.




Scan QR to find out more  
about accommodation  
at Bath  
[go.bath.ac.uk/  
accommodation-25](https://go.bath.ac.uk/accommodation-25)



# Living in Bath

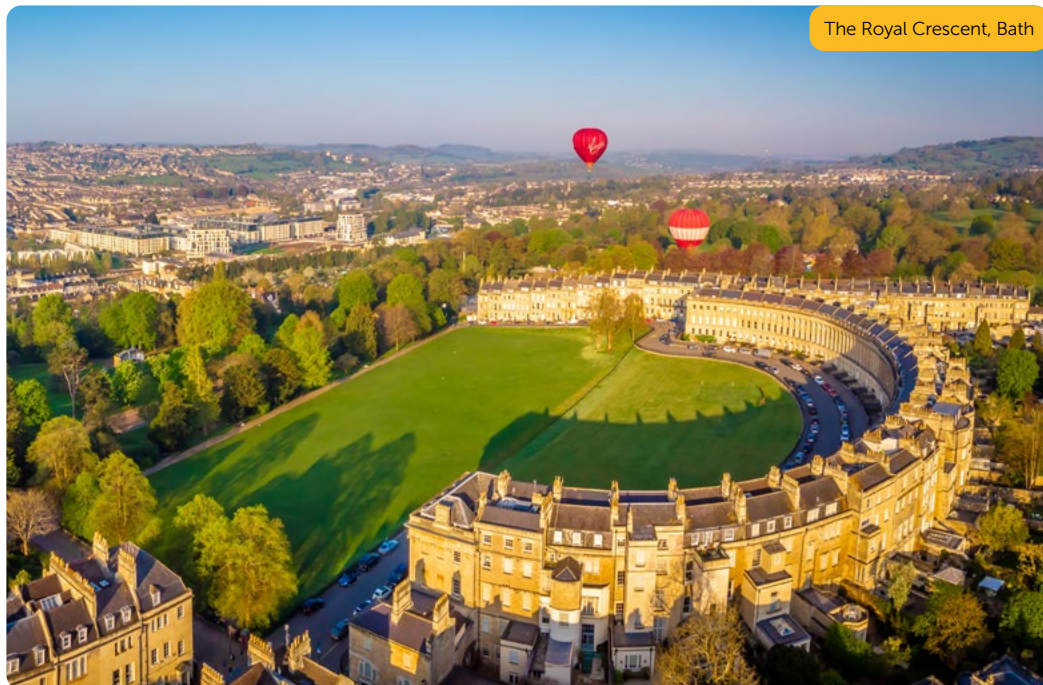
Bath is a lively, friendly, and historic UNESCO World Heritage city surrounded by beautiful countryside and well connected to the rest of the country.

A photograph of three young people standing on a green lawn in front of a large, historic stone building with many windows. A woman in the foreground is smiling and wearing sunglasses and a pink top. A man in a red shirt is in the middle, and another woman in a white top and blue skirt is on the left. They are all looking towards the building.

**"** I immediately felt safe in the city. The mix of new and old creates something really special. Another thing I like about Bath is the many green spaces around the campus and the city. **"**

**Mel**, BSc (Hons) Sociology





## From campus to the city

You can travel between our campus and Bath city centre in about 20 minutes by bus, or you can keep your bike in one of our campus cycle stores and ride down the hill to the city.

If you prefer to walk, the routes into the city give you stunning views over Bath.

## Students and the city

The University works closely with the local council and community to make Bath a great place to live, and many of our students stay in Bath after they graduate.

As a student at Bath, you can get involved in the life of the city, taking part in events like the Bath Carnival or helping the community through our student volunteer groups.



## Social life

Bath has plenty of restaurants and cafés to choose from, many of which offer student discounts. You'll find well-known chains, as well as independent places and a range of global cuisines.

There's also a great selection of bars, pubs and clubs throughout the city ranging from cosy and quiet to late night clubs.

## A safe city

Bath has a friendly community atmosphere and is ranked the second safest university town or city in England and Wales.<sup>1</sup>

<sup>1</sup>Bath was ranked the second safest university town or city in England and Wales in 2023 by the Complete University Guide.





## Experience art and culture

Bath has lots of museums, galleries, cinemas, theatres, and historic sites to explore, including the ancient Roman Baths and streets filled with Bath's famous Georgian architecture.

There are also cultural events throughout the year. These have previously included:

- The Bath Festival, a ten-day multi-arts event
- FilmBath Festival
- Bath Comedy Festival
- Bath Fringe Festival

## Shopping

You can browse well-known brands or explore the picturesque alleyways and side streets for independent shops.

There are three large supermarkets in the city centre as well as international food shops in the local area that sell African, Asian, Caribbean, Indian, Mediterranean, Middle Eastern and Polish goods.







## Enjoy the outdoors

There are lots of relaxing outdoor spaces in the city, including squares with kerbside cafés and leafy parks and gardens. The city and surrounding countryside are perfect for walking, running and cycling, with access to local National Cycle Network routes.

There are also lots of places to go swimming, both indoors and in the wild, and you can hire a rowing boat, paddleboard, canoe, or punt on the river Avon.

## Beyond Bath

Bath is a gateway to the beautiful South West and beyond, and it's easy to get out and explore from the train and coach stations in the city centre.

The nearest beach is about an hour away and you can visit nearby cities like Bristol or Cardiff.



The Holburne Museum



Explore the South West of England, including Stonehenge, about 45 minutes' drive from the campus.

Scan QR to find out more about living in Bath.

[go.bath.ac.uk/living-in-bath-25](https://go.bath.ac.uk/living-in-bath-25)







**“ The city looks like it’s out of a movie. It’s got a perfect blend of historic and modern architecture combined with a variety of restaurants and small businesses. ”**

**Tanisha**, BSc (Hons) Politics and International Relations



# Protecting our environment



We're committed to protecting our environment, and everyone's contribution is vital. We take a whole-institution approach that includes:

- researching solutions to tackle the climate emergency
- providing education to empower students as change makers for climate change
- reducing the environmental footprint of the University
- forging partnerships to bring wider society transformation

## Education for change

We include Carbon Literacy in our induction for all new students. This means you can gain accreditation with the Carbon Literacy Project by making climate action pledges to achieve meaningful change.

You can take part in Vertically Integrated Projects to work with local councils and organisations, locally and globally, on real-world sustainability challenges. You can also get involved in our Climate Action work. For example, in previous years, students helped create principles for climate-aligned research and education at the University.

## Research for change

Our research into aspects of the climate crisis and its mitigation includes:

- understanding and promoting behaviour change to tackle environmental challenges
- informing global policy and decision making around climate change
- promoting the use of economic valuations of environmental damage
- strengthening national vehicle pollution policy and standards
- designing more efficient ways to generate energy



## Our Climate Action Framework

In 2020, we set out our eleven Climate Action Framework principles. They include targets to:

- achieve Net Zero carbon emissions across all our activities (Scope 1, 2 and 3 emissions) by 2040
- develop our curriculum, and provide co-curricular opportunities, to equip all students with the skills and knowledge to be able to tackle climate issues immediately and in their career
- assess and improve the sustainability of how we conduct our research, particularly focusing on laboratories
- work collaboratively with local, regional and national organisations to lead transformative change across society

Between 2005 and 2020, we reduced our carbon emissions by 45%, even as we've developed our campus facilities and infrastructure.

Scan QR to learn more about how we're protecting our environment.

[go.bath.ac.uk/environment-25](https://go.bath.ac.uk/environment-25)



\* We have been ranked 92nd in the QS World University Rankings: Sustainability 2024.

# Applying to Bath

We're proud to have a community that welcomes students of any nationality, age, and background. Our Admissions team can help you with the application process and answer your questions along the way.

**“ Bath stood out, offering one-to-one campus tours and calling me when I received my offer to answer any questions. My first impressions were “wow, I can’t imagine being this happy anywhere else”. ”**

**Melania, BSc (Hons) Sociology**





Students' Union building

## Applying for a place

You need to apply through UCAS for any undergraduate course at Bath.

## Our entry requirements

The course pages in this prospectus (pages 52 to 95) include our typical and contextual offers for students studying A levels or the International Baccalaureate (IB) Diploma. We also consider many other UK and international qualifications.

## English language requirements

Every student must meet the English language requirement for their chosen course. We accept English from a wide range of English proficiency and school-leaver qualifications across the world.

### English language categories

	GCSE or IGCSE	IELTS or IELTS Indicator	TOEFL IBT	Pearson PTE Academic	IB Diploma
<b>Category A</b>	6 or B	7.0 with 6.5 in all components	100 overall with 24 in each component	69 with 62 in each element	A pass in the IB Diploma including English taken at Standard or Higher Level grade of 3
<b>Category B</b>	4 or C	7.0 with 6.5 in each component	100 overall with 24 in each component	69 with 62 in each element	
<b>Category C</b>	4 or C	6.5 with 6.0 in each component	90 overall with 21 in each component	62 with 59 in each element	



## Contextual admissions

Having a diverse student population is very important to us and we aim to select students with the greatest potential to succeed in our degree courses, regardless of background and circumstances.

### Contextual offers

We offer contextual offers for A level and IB Diploma students. You can find our contextual offer for each course alongside our typical offers in the course pages on pages 52 to 95.

You will be eligible for a contextual offer if you're a UK student, and you meet one of the following:

- you are verified by UCAS as eligible for Free School Meals (FSM) between ages 11 and 16
- your home postcode is in an area of high socio-economic disadvantage (IMD quintile 1 or 2) unless you attended an independent or international school for more than two years in your last four
- you are a care leaver,<sup>1</sup> care experienced, a young carer or an estranged student
- you (or your parent) are a refugee, asylum seeker or has been granted humanitarian protection

### Additional consideration

If you meet our contextual criteria and are not initially selected for an offer, your application will be reviewed by our dedicated Admissions Progression team.

If you choose Bath as one of your final choices but miss your offer, we may still be able to consider you for a place. We will look at contextual factors and, where appropriate, our Admissions Progression team will prioritise you for any available space.

Space is always limited, though, so we can't guarantee we'll be able to consider you if you don't meet the conditions of your offer.

### Mitigating circumstances

If you've had problems beyond your control that affect your studies, we might be able to take these into account when we consider your application. Mitigating circumstances might be personal, health-related, or disruption in your school. We strongly encourage you to tell us if you think you have mitigating circumstances. Anything you tell us will be treated confidentially.



<sup>1</sup> If you've spent time in care and meet our terms and conditions, you'll also be guaranteed a conditional offer for the course you've applied for.

## Alternative offers for A level students

If you're not eligible for a contextual offer, you may still be eligible for the same reduced offer if you have recognised additional study.

We recognise additional achievement in:

- projects like the Extended Project Qualification (EPQ)
- additional maths qualifications

## Student Performance Sport Offer Scheme

If you are a student athlete performing at a high level in your chosen sport you may be eligible to nominate yourself to be considered for a reduced offer. You must meet essential academic requirements (including studying A levels or the IB Diploma) and sport-specific performance criteria. To find out more, visit:

[www.teambath.com/student-performance-sport-offer-scheme/](http://www.teambath.com/student-performance-sport-offer-scheme/)



Campus parade



## Applying after a break from education

We welcome applications from mature students and value the additional experience in life and work that you might be able to bring to our courses.

Scan QR to find out more about applying to Bath.  
[go.bath.ac.uk/applying-25](http://go.bath.ac.uk/applying-25)



# Tuition Fees



## Our latest tuition fees

If you accept an offer to study at Bath, you'll need to pay tuition fees for each year of your studies.

You can find our most up-to-date fees on our website, but you should use these as a guide because our fees may increase each year. We publish the fees for each academic year on the website by December of the year before.

## Your fee status

The amount you need to pay depends on your fee status. We determine your fee status based on your nationality, where you live, and how long you've lived there, according to the information you've given us in your application. Your fee status will be either:

- home
- overseas

We'll normally confirm your fee status in your offer letter, but we might need to ask you some additional questions first.

Tuition fees for 2024 entry	
Home students	
Campus-based courses	£9,250
Overseas students	
Humanities and Social Sciences with the exception of: BSc Economics BSc Economics and Mathematics BSc Economics with Politics BSc/MSc Sport and Exercise Science BSc Psychology	£22,800
Economics (and related) and School of Management courses including: BSc International Management and Modern Languages BSc Economics BSc Economics and Mathematics BSc Economics with Politics	£25,700
All Science, Engineering, Health, and Psychology courses including: BSc/MSc Sport and Exercise Science BSc Psychology	£28,800
The fees could increase for the 2025/26 academic year.	





## Home fees

If you have Home fee status, you will pay the fees set for the year by the UK government. These fees are approved by Parliament and could increase each year.

## Overseas fees

If you have Overseas fee status, your tuition fees will usually increase each year during your studies. For 2025/26 entry, the percentage increase for continuing students will be confirmed in Spring 2024 and published on [go.bath.ac.uk/tuition-fees-25](https://go.bath.ac.uk/tuition-fees-25). We'll publish the fees for each academic year on the website by December of the year before.

You should budget for this increase to make sure you can afford each year of study.

## Placement and study abroad fees

If you choose to take a placement or study abroad, you might pay a reduced fee during that year. The fee you pay will depend on your course.

For Home students, you'll pay the fee set by the UK government. The fees are currently capped at 20% of the full-time fee for placement years and 15% of the full-time fee for study abroad.

## Paying your tuition fees

If you're a Home student, you may be able to get a loan to help you pay your tuition fees.

See page [22](#) to find out about ways to fund your studies.

If you don't have a tuition fee loan, you can pay by Direct Debit, debit card, credit card, or bank transfer.

## Extra costs

Depending on your course, you might have additional costs during your studies to pay for things like:

- a laptop or desktop computer
- textbooks
- printing
- fieldwork
- travel to a work placement

You may also need to pay other charges for things like exam retakes and overdue library books.

Scan QR to to find out more about tuition fees.

[go.bath.ac.uk/tuition-fees-25](https://go.bath.ac.uk/tuition-fees-25)



# Course Finder



<b>Accounting and finance</b>	<b>52</b>	<b>International development</b>	<b>76</b>
Accounting and Management		International Development with Economics	
Accounting and Finance		<b>Modern languages</b>	<b>77</b>
<b>Architecture</b>	<b>53</b>	Modern Languages	
Architecture		<b>Mathematical sciences</b>	<b>78 - 79</b>
<b>Biosciences</b>	<b>54 - 55</b>	Mathematics	
Biology		Mathematics and Statistics	
Biochemistry		Mathematics, Statistics and Data Science	
Biomedical Sciences		<b>Mechanical engineering</b>	<b>80 - 81</b>
<b>Business and management</b>	<b>56 - 57</b>	Aerospace Engineering	
Business		Integrated Design Engineering	
Management		Mechanical Engineering	
International Management		Mechanical with Automotive Engineering	
Management with Marketing		Mechanical Engineering with Manufacturing and Management	
International Management and Modern Languages		<b>Natural sciences</b>	<b>82</b>
<b>Chemical engineering</b>	<b>58 - 59</b>	Natural Sciences	
Chemical Engineering		<b>Pharmacology</b>	<b>84</b>
Chemical Engineering with Environmental Engineering		Pharmacology	
<b>Chemistry</b>	<b>60 - 61</b>	<b>Pharmacy</b>	<b>85</b>
Chemistry		Pharmacy	
Chemistry for Drug Discovery		<b>Physics</b>	<b>86 - 87</b>
Chemistry with Management		Physics	
<b>Civil engineering</b>	<b>62</b>	Physics with Astrophysics	
Civil Engineering		Mathematics and Physics	
Structural and Architectural Engineering		<b>Politics</b>	<b>88 - 89</b>
<b>Computer science</b>	<b>64 - 65</b>	International Politics and Modern Languages	
Computer Science		Politics with Economics	
Computer Science and Artificial Intelligence		Politics and International Relations	
Computer Science and Mathematics		<b>Psychology</b>	<b>90</b>
<b>Criminology</b>	<b>66</b>	Psychology	
Criminology		<b>Social Work</b>	<b>91</b>
<b>Economics</b>	<b>68 - 69</b>	Social Work and Applied Social Studies	
Economics		<b>Sociology, social policy and social sciences</b>	<b>92 - 93</b>
Economics with Politics		Social Policy	
Economics and Mathematics		Sociology	
<b>Education</b>	<b>70</b>	Sociology and Social Policy	
Education with Psychology		Social Sciences	
<b>Electronic and electrical engineering</b>	<b>72 - 73</b>	<b>Sport, exercise and health</b>	<b>94 - 95</b>
Computer Systems Engineering		Health and Exercise Science	
Electrical and Electronic Engineering		Sport, Management and Coaching	
Electronic Engineering with Space Science and Technology		Sport (Sports Performance)	
Robotics Engineering		Sport and Exercise Science	
<b>Integrated mechanical and electrical engineering</b>	<b>75</b>		
Integrated Mechanical and Electrical Engineering			



# Accounting and finance

## Accounting and finance

combines the study of accounting and financial systems with the measurement and communication of this information.

You'll develop your analytical skills, learn to understand financial systems and explore other business areas you're interested in.

Accounting and management combines key management disciplines with extensive accounting knowledge. You'll learn financial and management accounting, finance and specialist management disciplines. You'll also be able to explore other areas that match your career ambitions.

If you choose the four-year course, you'll be able to apply your skills in a business environment with a placement year. This will give you a distinct advantage in the graduate job market. We have strong connections with over 380 organisations in the UK and worldwide.

90% of our Accounting and Finance (four-year) graduates are working or studying 15 months after their course. The average salary after this time for accounting and finance graduates is £30,500 - that's £5,500 higher than the UK average (Discover Uni, 2023).

## Accounting and Finance

- BSc (Hons) - Three years
- BSc (Hons) - Four years with work placement

### Entry Requirements

<b>A level</b> Typical Offer	AAA or A*AB including A in Mathematics.
<b>A level</b> Contextual Offer	AAB including A in Mathematics.
<b>IB Diploma</b> Typical Offer	36 points and 6, 6, 6 or 7, 6, 5 in three Higher Level subjects including 6 in either HL Mathematics.
<b>IB Diploma</b> Contextual Offer	36 points and 6, 6, 5 in three Higher Level subjects including 6 in either HL Mathematics.
<b>GCSE</b>	6 or B in English Language or Literature (or equivalent from category A – see page 43).

## Accounting and Management

- BSc (Hons) - Three years
- BSc (Hons) - Four years with work placement

### Entry Requirements

<b>A level</b> Typical Offer	AAA or A*AB in three A levels.
<b>A level</b> Contextual Offer	AAB in three A levels.
<b>IB Diploma</b> Typical Offer	36 points and 6, 6, 6 or 7, 6, 5 in three Higher Level subjects.
<b>IB Diploma</b> Contextual Offer	36 points and 6, 6, 5 in three Higher Level subjects.
<b>GCSE</b>	6 or B in Mathematics.  6 or B in English Language or Literature (or equivalent from category A – see page 43).



For all listed courses, graduates can apply for professional qualification exemptions from:

- the Association of Chartered Certified Accountants (ACCA)
- the Chartered Institute of Management Accountants (CIMA)
- the Institute of Chartered Accountants in England and Wales (ICAEW)

We also offer a course in:

**Economics** – see page 68



Visit our website for more information:  
[go.bath.ac.uk/acc-fin-25](https://go.bath.ac.uk/acc-fin-25)

**2nd** for Accounting and Finance  
in the Complete University Guide 2024

**Top 5** for Accounting and Finance  
in The Times and The Sunday Times  
University Guide 2024

# Architecture



**Architects** use art, science, and technology to design buildings, places and spaces.

Throughout our course, you'll develop your design skills and learn how cultural, historic, and socio-economic factors inform design decisions. Based in our purpose-built studios, you'll work on a varied series of design projects which will challenge you to integrate the principles of structural, environmental, and sustainable design. On some projects during your degree, you'll get to work in teams of architecture and civil engineering students. This helps you gain insight into the design problems and professional relationships you will experience in your future career.

We combine two placements of professional work experience during your academic studies, to help you on your journey to becoming a qualified Architect.

**"Going into practice allows you to see what the real-life problems are in architecture on a day-to-day basis. When you bring these back to your studio project after placement, you know what to prioritise."**

**Marina, BSc (Hons) Architecture**

## Architecture

- BSc (Hons) - Four years including placements

### Entry Requirements

<b>A level</b> Typical Offer	A*AA in three A levels.
<b>A level</b> Contextual Offer	AAA or A*AB in three A levels.
<b>IB Diploma</b> Typical Offer	36 points and 7, 6, 6 in three Higher Level subjects.
<b>IB Diploma</b> Contextual Offer	36 points and 6, 6, 6 or 7, 6, 5 in three Higher Level subjects.
<b>GCSE</b>	6 or B in Mathematics.  6 or B in English Language or Literature (or equivalent from category A – see page 43).



**This course is currently prescribed by the Architects Registration Board (ARB), subject to period review, for the purposes of entry on to the United Kingdom Register of Architects**



**This course is fully validated by the Royal Institute of British Architects (RIBA) for the purposes of RIBA membership**



Visit our website for more information:  
[go.bath.ac.uk/arch-25](http://go.bath.ac.uk/arch-25)

**2nd** for Architecture in the Complete University Guide 2024

**Top 5** for satisfied with teaching for Architecture in the Guardian University Guide 2024

**Top 5** for Architecture in the Times and Sunday Times Good University Guide 2024

# Biosciences



**Biosciences** is the study of living things, from ecosystems and populations, to their molecular components. It's a highly relevant area of study which looks to address global issues such as food security, human health and environmental sustainability.

We offer three biosciences subjects: Biology, encompassing life on all scales; Biochemistry, which focuses on biological systems at a cellular and biochemical level; and Biomedical Sciences, which applies biological science to explore human health and the causes, prevention and treatment of disease. Each course will give you the vital knowledge and skills to be part of the next generation of scientists, or to move into other graduate roles. You can also take advantage of our strong links with global companies and leading research institutions by applying to go on a professional placement.

## Biochemistry

- BSc (Hons) - Three years
- BSc (Hons) - Four years with professional placement
- MBiochem (Hons) - Four years
- MBiochem (Hons) - Five years with professional placement

### Entry Requirements

<b>A level</b> Typical Offer	AAB in three A levels including A in Biology and A in Chemistry.
<b>A level</b> Contextual Offer	ABB in three A levels including Biology and Chemistry with A in Biology or Chemistry.
<b>IB Diploma</b> Typical Offer	36 points and 6, 6, 5 in three Higher Level subjects including 6 in Biology and 6 in Chemistry
<b>IB Diploma</b> Contextual Offer	35 points and 6, 5, 5 in three Higher Level subjects including Biology and Chemistry with 6 in Biology or Chemistry.
<b>GCSE</b>	4 or C in Mathematics.  4 or C in English Language or Literature (or equivalent from category C – see page <a href="#">43</a> ).



## Biology

- BSc (Hons) - Three years
- BSc (Hons) - Four years with professional placement
- MBIol (Hons) - Four years
- MBIol (Hons) - Five years with professional placement

### Entry Requirements

<b>A level</b> Typical Offer	AAB in three A levels including A in Biology and A in a second science or mathematics subject.
<b>A level</b> Contextual Offer	ABB in three A levels including A in Biology and B in a second science or mathematics subject.
<b>IB Diploma</b> Typical Offer	36 points and 6, 6, 5 in three Higher Level subjects including 6 in Biology and 6 in a second science or mathematics subject.
<b>IB Diploma</b> Contextual Offer	35 points and 6, 5, 5 in three Higher Level subjects including 6 in Biology and 5 in a second science or mathematics subject.
<b>GCSE</b>	4 or C in Mathematics.  4 or C in English Language or Literature (or equivalent from category C – see page 43).



Our courses have been accredited by the Royal Society of Biology (RSB) for a number of years. The RSB conducts a reaccreditation exercise every few years or when we make changes to the course. We are currently going through this reaccreditation process and are awaiting the outcome of this evaluation.

## Biomedical Sciences

- BSc (Hons) - Three years
- BSc (Hons) - Four years with professional placement
- MBioMed (Hons) - Four years
- MBioMed (Hons) - Five years with professional placement

### Entry Requirements

<b>A level</b> Typical Offer	AAA or A*AB in three A levels including A in Biology and A in Chemistry.
<b>A level</b> Contextual Offer	AAB in three A levels including grade A in Biology and A in Chemistry.
<b>IB Diploma</b> Typical Offer	36 points and 6, 6, 6 or 7, 6, 5 in three Higher Level subjects including 6 in Biology and 6 in Chemistry.
<b>IB Diploma</b> Contextual Offer	36 points and 6, 6, 5 in three Higher Level subjects including 6 in Biology and 6 in Chemistry.
<b>GCSE</b>	4 or C in Mathematics.  4 or C in English Language or Literature (or equivalent from category C – see page 43).



Visit our website for more information:  
[go.bath.ac.uk/bio-25](https://go.bath.ac.uk/bio-25)

**Top 5** for graduate prospects for Biological Sciences in The Times and The Sunday Times Good University Guide 2024

**Top 10** for student experience for Biological Sciences in The Times and The Sunday Times Good University Guide 2024

**Top 10** for Biological Sciences in the Complete University Guide 2024

# Business and management



**Explore the business environment** and learn how organisations function. Our degree courses cover core topics like managing people, business analytics, marketing and finance.

Combining theory, practice and placements, our courses will give you an excellent knowledge of business. Optional units of study let you explore features relevant to your chosen career. You'll develop a broad set of skills and an understanding of the international business environment.

If you choose a four-year course, you'll be able to apply your skills in a business environment with a placement year. This will give you a distinct advantage in the graduate job market. We have strong connections with over 380 organisations in the UK and worldwide.

The average salary of our business and management graduates 15 months after their course is £32,500 – that's £7,500 higher than the UK average (Discover Uni, 2023).

## Business

- BSc (Hons) - Four years with work placements

## Management

- BSc (Hons) - Three years
- BSc (Hons) - Four years with work placement

## International Management

- BSc (Hons) - Four years with study or work abroad

## Management with Marketing

- BSc (Hons) - Four years with work placement

### Entry Requirements

<b>A level</b> Typical Offer	AAA or A*AB in three A levels.
<b>A level</b> Contextual Offer	AAB in three A levels.
<b>IB Diploma</b> Typical Offer	36 points and 6, 6, 6 or 7, 6, 5 in three Higher Level subjects
<b>IB Diploma</b> Contextual Offer	36 points and 6, 6, 5 in three Higher Level subjects.
<b>GCSE</b>	6 or B in Mathematics  6 or B in English Language or Literature (or equivalent from category A – see page 43).



**BSc Business graduates can apply for certain professional qualification exemptions from the Chartered Institute of Management Accountants (CIMA).**

We also offer a course in:

**Accounting and Management** – see page 52

**Economics** – see page 68

## International Management and Modern Languages (French, German or Spanish)

- BSc (Hons) - Four years with study or work abroad

### Entry Requirements

<b>A level</b> Typical Offer	AAB in three A levels including A in your chosen language.
<b>A level</b> Contextual Offer	ABB in three A levels including A in your chosen language.
<b>IB Diploma</b> Typical Offer	36 points and 6, 6, 5 in three Higher Level subjects including 6 in your chosen language.
<b>IB Diploma</b> Contextual Offer	35 points and 6, 5, 5 in three Higher Level subjects including 6 in your chosen language.
<b>GCSE</b>	6 or B in Mathematics  6 or B in English Language or Literature (or equivalent from category A – see page 43).



Visit our website for more information:  
[go.bath.ac.uk/mgt-25](https://go.bath.ac.uk/mgt-25)

**1st** for Marketing for eight consecutive years in the Complete University Guide 2017 – 2024

**Top 5** for Business, Management and Marketing in The Times and Sunday Times Good University Guide 2024

**Top 5** for Business and Management in the Guardian University Guide 2024

**3rd** for Business and Management Studies in the Complete University Guide 2024



# Chemical engineering



## Chemical engineering combines science and mathematics to develop new and sustainable technologies, processes, and products.

With a chemical engineering degree, you're not just choosing a career, you're opening up a wealth of possibilities. Imagine shaping a healthier, more sustainable, and more advanced future by revolutionising energy systems, securing water and food for all, and forging the next generation of healthcare technologies. Becoming a chemical engineer could be the start of your journey to transforming processes, products and technologies for a better world.

Individual and group projects are a key feature of your studies and a chance for you to develop scientific ideas from the bench scale to process scale. Through lectures and practical lab sessions, you'll explore new technologies, develop industrial strategies, and gain a comprehensive understanding of process design.

Our MEng degrees give you a more in-depth study experience and our placement options give you the chance to gain professional experience and work with engineers in industry.



These courses are accredited by the Institution of Chemical Engineers (IChemE) under licence from the UK regulator, the Engineering Council, for the purpose of partially meeting (BEng) or fully meeting (MEng) the educational requirement for Chartered Chemical Engineer (CEng).

## Chemical Engineering

- BEng (Hons) - Three years
- BEng (Hons) - Four years with professional placement
- MEng (Hons) - Four years
- MEng (Hons) - Five years with professional placement

## Chemical Engineering with Environmental Engineering

- MEng (Hons) - Four years
- MEng (Hons) - Five years with professional placement

### Entry Requirements

<b>A level</b> Typical Offer	A*AA in three A levels including Mathematics and Chemistry.
<b>A level</b> Contextual Offer	AAA or A*AB in three A levels including A in Chemistry and A in Mathematics.
<b>IB Diploma</b> Typical Offer	36 points and 7, 6, 6 in three Higher Level subjects including Chemistry and either HL Mathematics.
<b>IB Diploma</b> Contextual Offer	36 points and 6, 6, 6 or 7, 6, 5 in three Higher Level subjects including 6 in Chemistry and 6 in either HL Mathematics.
<b>GCSE</b>	4 or C in English Language or Literature (or equivalent from category C – see page 43).



Visit our website for more information:  
[go.bath.ac.uk/chem-eng-25](https://go.bath.ac.uk/chem-eng-25)

**2nd** for career after 15 months for Chemical Engineering in the Guardian University Guide 2024

**Top 5** for Chemical Engineering in the Complete University Guide 2024

# Chemistry



**Chemists** study the structure, properties and synthesis of matter. You'll learn how to make the substances we use every day, from molecules to materials.

Explore a range of topics and move seamlessly between areas such as nanotechnology, drug development, sustainability, and new materials. The core units in the first year of all our courses are the same, giving you the flexibility to switch if you change your mind about what area of chemistry you'd like to specialise in.

You'll gain vital practical experience in our well-equipped labs and will have the opportunity to improve your employment prospects, with the option to go on a professional placement or study abroad. As a student here, you'll be part of a supportive department with friendly staff and an active student community.

*"You do everything from synthesising molecules to analysing complex compounds. I've even learnt how to code."*

**Jack, MChem (Hons) Chemistry**



## Chemistry

- BSc (Hons) - Three years
- BSc (Hons) - Four years  
with professional placement or study abroad
- MChem (Hons) - Four years
- MChem (Hons) - Four years  
with professional placement or study abroad

## Chemistry for Drug Discovery

- BSc (Hons) - Three years
- BSc (Hons) - Four years  
with professional placement or study abroad
- MChem (Hons) - Four years
- MChem (Hons) - Four years  
with professional placement or study abroad

## Chemistry with Management

- BSc (Hons) - Three years
- BSc (Hons) - Four years  
with professional placement or study abroad
- MSci (Hons) - Four years
- MSci (Hons) - Five years  
with professional placement



**All courses are fully accredited by the Royal Society of Chemistry. By studying a course with a professional accreditation, you could have the chance to get workplace experience, learn about new developments in the industry and apply for membership with the accrediting body.**

## Entry Requirements

<b>A level</b> Typical Offer	<p><b>If you study Chemistry and at least two other maths or science subjects:</b></p> <p>AAB in three A levels including A in Chemistry plus two other maths or science subjects.</p> <p><b>If you study Chemistry and only one other maths or science subject:</b></p> <p>AAA in three A levels including A in Chemistry plus one other maths or science subject.</p>
<b>A level</b> Contextual Offer	<p><b>If you study Chemistry and at least two other maths or science subjects:</b></p> <p>ABB in three A levels including A in Chemistry and B in two other science or mathematics subjects.</p> <p><b>If you study Chemistry and only one other maths or science subject:</b></p> <p>AAB in three A levels including A in Chemistry and B in one other science or mathematics subject.</p>
<b>IB Diploma</b> Typical Offer	36 points and 6, 6, 5 in three Higher Level subjects including 6 in Chemistry and 5 in a second science or mathematics subject.
<b>IB Diploma</b> Contextual Offer	35 points and 6, 5, 5 in three Higher Level subjects including 6 in Chemistry and 5 in a second science or mathematics subject.
<b>GCSE</b>	6 or B in Mathematics  4 or C in English Language or Literature (or equivalent from category A – see page 43).



Visit our website for more information:  
[go.bath.ac.uk/chem-25](https://go.bath.ac.uk/chem-25)

**Top 10** for Chemistry in the  
Complete University Guide 2024

# Civil engineering

**Civil, structural and architectural engineers** design and shape the built environment, using creativity to improve the world we live in for a sustainable future.

At Bath, we encourage you to imagine new ways of delivering sustainable, practical, and beautiful engineering solutions. You'll push the boundaries of design and construction to generate creative ideas for our infrastructure and cities. By studying in our joint department with architecture, you'll have the opportunity to work in cross-disciplinary teams that mirror the professional relationships you'll experience in your career.

You can move between any of our courses up to the end of your second year. Our MEng degrees give you a more in-depth study experience and our placement options provide the chance to gain professional experience and work with engineers in industry.



Our courses are accredited by the Joint Board of Moderators (JBM) comprising the Institution of Civil Engineers, Institution of Structural Engineers, Institute of Highway Engineers, the Chartered Institution of Highways and Transportation and the Permanent Way Institution on behalf of the Engineering Council for the purposes of partially meeting (BEng) or fully meeting (MEng) the academic requirement for registration as a Chartered Engineer (CEng).

## Civil Engineering

- BEng (Hons) - Three years
- BEng (Hons) - Four years with professional placement
- MEng (Hons) - Four years
- MEng (Hons) - Five years with professional placement

## Structural and Architectural Engineering

- BEng (Hons) Three years
- BEng (Hons) Four years with professional placement
- MEng (Hons) Four years
- MEng (Hons) Five years with professional placement

### Entry Requirements

<b>A level</b> Typical Offer	A*AA in three A levels including Mathematics.
<b>A level</b> Contextual Offer	AAA or A*AB in three A levels including A in Mathematics.
<b>IB Diploma</b> Typical Offer	36 points and 7, 6, 6 in three Higher Level subjects including either HL Mathematics.
<b>IB Diploma</b> Contextual Offer	36 points and 6, 6, 6 or 7, 6, 5 in three Higher Level subjects including 6 in either HL Mathematics.
<b>GCSE</b>	4 or C in English Language or Literature (or equivalent from category C – see page 43).



Visit our website for more information:  
[go.bath.ac.uk/civ-eng-25](https://go.bath.ac.uk/civ-eng-25)

**Top 5** for Civil Engineering in the Guardian University Guide 2024

**Top 10** for Civil Engineering in the Complete University Guide 2024



“ You can play such a big role in making sure we tackle societal and environmental problems. You will become the designer that our world needs. ”

**Raiesha**, MEng (Hons) Civil Engineering  
with professional placement



# Computer science



**Computer Science** is the science behind much of the technology we use in our daily lives. Programming is a core topic, but there's so much more to learn.

Our courses cover a broad range of areas in computer science, exploring the traditional software and logic aspects of the subject, with special attention to its underlying mathematics. You'll develop a sound knowledge base and wide range of skills valuable to a career in the field, including learning to analyse, integrate and apply new ideas and techniques to solve computing problems.

As a student here, you'll be part of a supportive department, with opportunities to get involved in societies and events such as hackathons, coding competitions and conferences. You can also take advantage of our strong links with industry by applying to go on a professional placement.



These courses have been accredited by the British Computer Society (BCS) for a number of years. The BCS conducts a reaccreditation exercise every few years or when we make changes to the course. We are currently going through this reaccreditation process and are awaiting the outcome of this evaluation.

## Computer Science

- BSc (Hons) - Three years
- BSc (Hons) - Four years with professional placement or study abroad
- MComp (Hons) - Four years
- MComp (Hons) - Five years with professional placement or study abroad

## Computer Science and Artificial Intelligence

- BSc (Hons) - Three years
- BSc (Hons) - Four years with professional placement or study abroad
- MComp (Hons) - Four years
- MComp (Hons) - Five years with professional placement or study abroad

### Entry Requirements

<b>A level</b> Typical Offer	A*A*A in three A levels including Mathematics.
<b>A level</b> Contextual Offer	A*AA or A*A*B in three A levels including A in Mathematics.
<b>IB Diploma</b> Typical Offer	36 points and 7, 7, 6 in three Higher Level subjects including 6 in either HL Mathematics.
<b>IB Diploma</b> Contextual Offer	36 points and 7, 6, 6 or 7, 7, 5 in three Higher Level subjects including 6 in either HL Mathematics.
<b>GCSE</b>	4 or C in English Language or Literature (or equivalent from category C – see page 43).



Visit our website for more information:  
[go.bath.ac.uk/comp-sci-25](https://go.bath.ac.uk/comp-sci-25)

## Computer Science and Mathematics

- BSc (Hons) - Three years
- BSc (Hons) - Four years with professional placement or study abroad
- MComp (Hons) - Four years
- MComp (Hons) - Five years with professional placement or study abroad

### Entry Requirements

<b>A level</b> Typical Offer	A*A*A in three A levels including A*A in Mathematics and Further Mathematics. <b>Alternative offers are available online if you are studying Further Mathematics at AS-level.</b>
<b>A level</b> Contextual Offer	A*AA or A*A*B in three A levels including A*A in Mathematics and Further Mathematics.
<b>IB Diploma</b> Typical Offer	36 points and either 7, 7, 6 in three Higher Level subjects including 6 in Mathematics: Analysis & Approaches or 7, 6, 6 or 7, 7, 5 in three Higher Level subjects including 7 in Mathematics: Analysis & Approaches
<b>IB Diploma</b> Contextual Offer	36 points and 7, 6, 6 or 7, 7, 5 in three Higher Level subjects including 6 in Mathematics: Analysis & Approaches.
<b>GCSE</b>	4 or C in English Language or Literature (or equivalent from category C – see page 43).

**Top 10** for Computer Science in the Complete University Guide 2024

**Top 10** for career after 15 months for Computer Science & Information Systems in the Guardian University Guide 2024

**Top 10** for student experience for Computer Science in The Times and The Sunday Times Good University Guide 2024

# Criminology

**Criminology** is the study of crime and criminality, as well as society's response to these.

Studying this subject will give you a deep insight into the theories of criminal activity, justice and punishment. By drawing on multiple perspectives and disciplines, you'll learn about:

- how criminal justice agencies work and interact
- the creation of criminal justice policy
- challenges faced by law enforcement, courts and prisons
- socioeconomic and sociopsychological factors that contribute to criminal activity

Your acquired knowledge and skills will prepare you for a diverse range of careers within the criminal justice sector or other fields.

You'll be able to take advantage of our industry links and go on a professional placement during your studies.

## Criminology

- BSc (Hons) - Three years
- BSc (Hons) - Four years with professional placement

### Entry Requirements

<b>A level</b> Typical Offer	AAB in three A levels.
<b>A level</b> Contextual Offer	ABB in three A levels.
<b>IB Diploma</b> Typical Offer	35 points and 6, 6, 5 in three Higher Level subjects.
<b>IB Diploma</b> Contextual Offer	35 points and 6, 5, 5 in three Higher Level subjects.
<b>GCSE</b>	4 or C in Mathematics.  4 or C in English Language or Literature (or equivalent from category B – see page <a href="#">43</a> ).



Visit our website for more information:  
[go.bath.ac.uk/crim-25](https://go.bath.ac.uk/crim-25)

**2nd** for Criminology in The Times and The Sunday Times Good University Guide 2024

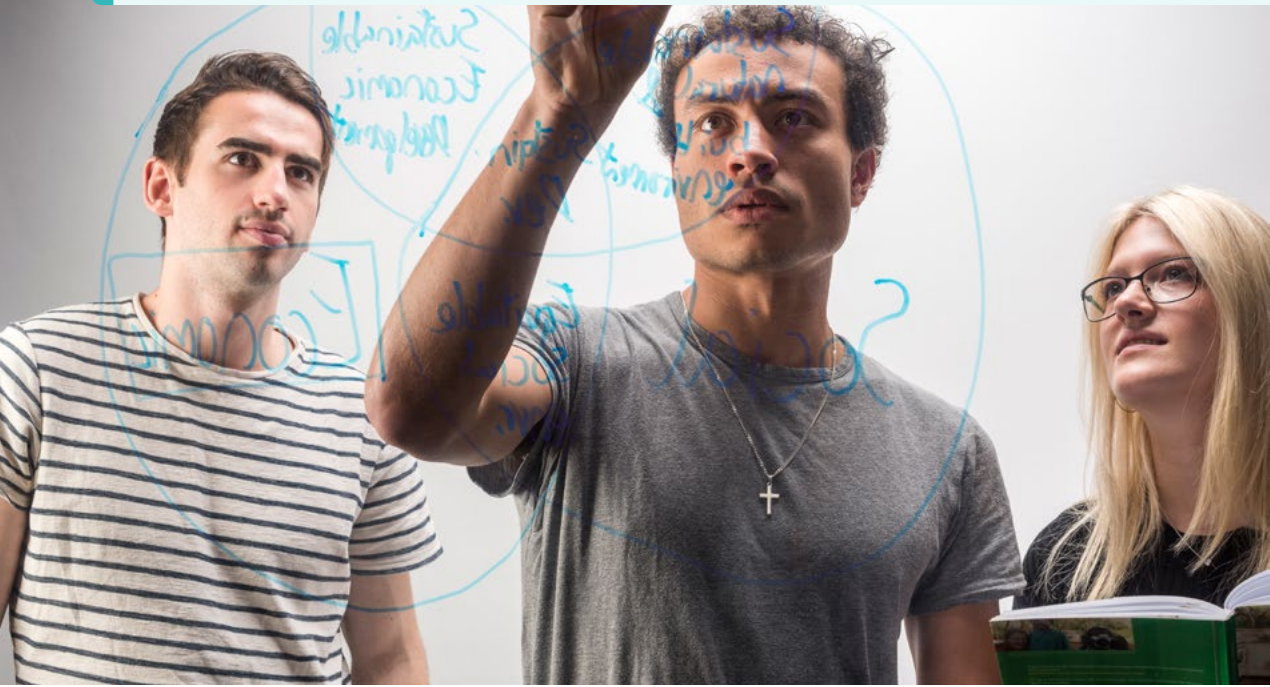
**Top 5** for Criminology in the Guardian University Guide 2024

**Top 10** for Research Quality for Criminology in The Times and The Sunday Times Good University Guide 2024





# Economics



**Economics** is about understanding the choices consumers and producers make.

It allows you to explore how a range of factors influence decision-making at both individual and societal level, and what the overall impact is upon allocating resources within the economy.

Economics is essential for understanding topics like:

- how and why governments allocate resources
- tackling climate change, global crises and productivity
- policy's impact on income equality
- how technology and globalisation affect economic outcomes

You'll learn how to analyse complex data, apply theoretical knowledge and solve quantitative problems. These skills will help you to address real-life micro and macroeconomic challenges.

Graduates often work as economists, financial or business analysts, accountants and tax professionals.

**"** The academics and lecturers are fascinating. You can really see, during lectures, their passion for the subject. **"**

**Constantinos, BSc (Hons) Economics**

## Economics

- BSc (Hons) - Three years
- BSc (Hons) - Four years with professional placement or study abroad

## Economics with Politics

- BSc (Hons) - Three years
- BSc (Hons) - Four years with professional placement or study abroad

### Entry Requirements

<b>A level</b> Typical Offer	A*AA in three A levels including Mathematics.
<b>A level</b> Contextual Offer	AAA or A*AB in three A levels including A in Mathematics.
<b>IB Diploma</b> Typical Offer	36 points and 7, 6, 6 in three Higher Level subjects including either HL Mathematics
<b>IB Diploma</b> Contextual Offer	36 points and 6, 6, 6 or 7, 6, 5 in three Higher Level subjects including 6 in either HL Mathematics.
<b>GCSE</b>	4 or C in English Language or Literature (or equivalent from category B – see page <a href="#">43</a> ).

## Economics and Mathematics

- BSc (Hons) - Three years
- BSc (Hons) - Four years with professional placement or study abroad

### Entry Requirements

<b>A level</b> Typical Offer	A*AA in three A levels including A*A in Mathematics and Further Mathematics. <b>Alternative offers are available online if you are studying Further Mathematics at AS-level.</b>
<b>A level</b> Contextual Offer	A*A in A level Mathematics and Further Mathematics plus B in a third A level.
<b>IB Diploma</b> Typical Offer	36 points and either 7, 6, 6 in three Higher Level subjects including 6 in Mathematics: Analysis & Approaches or 7, 6, 5 in three Higher Level subjects including 7 in Mathematics: Analysis & Approaches.
<b>IB Diploma</b> Contextual Offer	36 points and 7, 6, 5 in three Higher Level subjects including 6 in Mathematics: Analysis & Approaches.
<b>GCSE</b>	4 or C in English Language or Literature (or equivalent from category C – see page <a href="#">43</a> ).



Visit our website for more information:  
[go.bath.ac.uk/econ-25](https://go.bath.ac.uk/econ-25)

We also offer a course in:

**International Development with Economics** – see page [76](#)

**Politics with Economics** – see page [89](#)

**Top 10** for Economics in the Complete University Guide 2024

**1st** for Graduate Prospects for Economics in the Complete University Guide 2024

**Joint 1st** for Career after 15 Months in Economics in the Guardian University Guide 2024



# Education

**Studying education** is your chance to understand how humans develop and transform through learning.

It explores the social, economic and political factors that influence how people gain knowledge and skills during childhood and beyond.

You'll study topics like:

- young people's educational development
- creating equal and sustainable educational environments
- how governmental policies and educational practices impact learning

Through a blend of sociological, psychological, political and philosophical approaches, you'll identify and examine the barriers to learning faced by many around the world. You'll then learn about how to challenge these problems and positively impact people's lives.

Our course is delivered by the Department of Education, with relevant units from the Department of Psychology.

## Education with Psychology

- BA (Hons) - Three years
- BA (Hons) - Four years with professional placement

### Entry Requirements

<b>A level</b> Typical Offer	ABB in three A levels.
<b>A level</b> Contextual Offer	BBB in three A levels.
<b>IB Diploma</b> Typical Offer	35 points and 6, 5, 5 in three Higher Level subjects.
<b>IB Diploma</b> Contextual Offer	35 points and 5, 5, 5 in three Higher Level subjects.
<b>GCSE</b>	4 or C in English Language or Literature (or equivalent from category B – see page <a href="#">43</a> ).



**This degree is not accredited by the British Psychological Society (BPS). We choose not to be BPS accredited so we can draw on a range of disciplines when looking at education-related issues. You can gain this accreditation through further study, such as a master's.**



Visit our website for more information:  
[go.bath.ac.uk/edu-psych-25](https://go.bath.ac.uk/edu-psych-25)

**3rd** for Education in the Guardian University Guide 2024

**Top 5** for Education in the Complete University Guide 2024

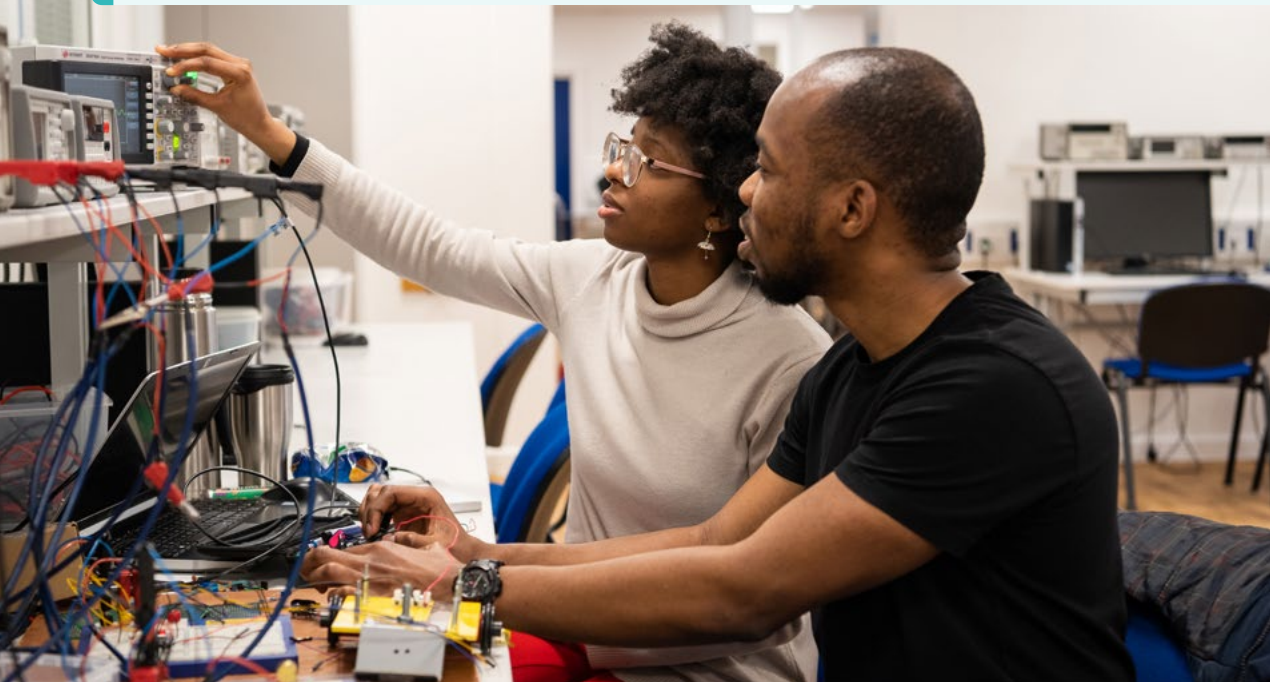
**Top 5** for Graduate Prospects in Education in The Times and The Sunday Times Good University Guide 2024

**“ I am very grateful to be studying such a diverse and engaging course. It has actively changed the way I view education and its significance in this current climate. ”**

**Blessing, BA (Hons) Education with Psychology**



# Electronic and electrical engineering



**Electronic and electrical engineering** drives the systems, infrastructure and technologies that connect us.

At Bath, we want to give you the knowledge and confidence to design and advance products, applications, and devices. Our courses teach you key principles and new engineering techniques against the backdrop of sustainability and other global challenges we face now and in the future. You'll discover the technology behind communications, healthcare, transport, and energy while developing business and management skills through project work. You could go on to develop the next smartphone, new satellites, design better biosensors to detect cancer, improve renewable micro-grids, or lead the robotics revolution.

Our MEng degrees give you a more in-depth study experience and our placement options give you the chance to gain professional experience and work with engineers in industry.

## Robotics Engineering

- BEng (Hons) - Three years
- BEng (Hons) - Four years with professional placement
- MEng (Hons) - Four years
- MEng (Hons) - Five years with professional placement

### Entry Requirements

<b>A level</b> Typical Offer	AAA or A*AB in three A levels including A in Mathematics and A in Physics.
<b>A level</b> Contextual Offer	AAB in three A levels including A in Mathematics and A in Physics.
<b>IB Diploma</b> Typical Offer	36 points and 6, 6, 6 or 7, 6, 5 in three Higher Level subjects including 6 in Physics and 6 in either HL Mathematics.
<b>IB Diploma</b> Contextual Offer	36 points and 6, 6, 5 in three Higher Level subjects including 6 in Physics and 6 in either HL Mathematics.
<b>GCSE</b>	4 or C in English Language or Literature (or equivalent from category C – see page <a href="#">43</a> ).



## Computer Systems Engineering

- BEng (Hons) - Three years
- BEng (Hons) - Four years with professional placement
- MEng (Hons) - Four years
- MEng (Hons) - Five years with professional placement

## Electrical and Electronic Engineering

- BEng (Hons) - Three years
- BEng (Hons) - Four years with professional placement
- MEng (Hons) - Four years
- MEng (Hons) - Five years with professional placement

## Electronic Engineering with Space Science and Technology

- BEng (Hons) - Three years
- BEng (Hons) - Four years with professional placement
- MEng (Hons) - Four years
- MEng (Hons) - Five years with professional placement



All of our courses are accredited by the Institution of Engineering and Technology, licensed by the Engineering Council. Our MEng degrees fully meet, and our BEng degrees partially meet, the educational requirements required for Chartered Engineer registration.

### Entry Requirements

<b>A level</b> Typical Offer	AAA or A*AB in three A levels including A in Mathematics and A in a second science or technology subject.
<b>A level</b> Contextual Offer	AAB in three A levels including A in Mathematics and A in a second science or technology subject.
<b>IB Diploma</b> Typical Offer	36 points and 6, 6, 6 or 7, 6, 5 in three Higher Level subjects including 6 in either HL Mathematics and 6 in one other science or technology subject.
<b>IB Diploma</b> Contextual Offer	36 points and 6, 6, 5 in three Higher Level subjects including 6 in either HL Mathematics and 6 in a second science or technology subject.
<b>GCSE</b>	4 or C in English Language or Literature (or equivalent from category C – see page <a href="#">43</a> ).

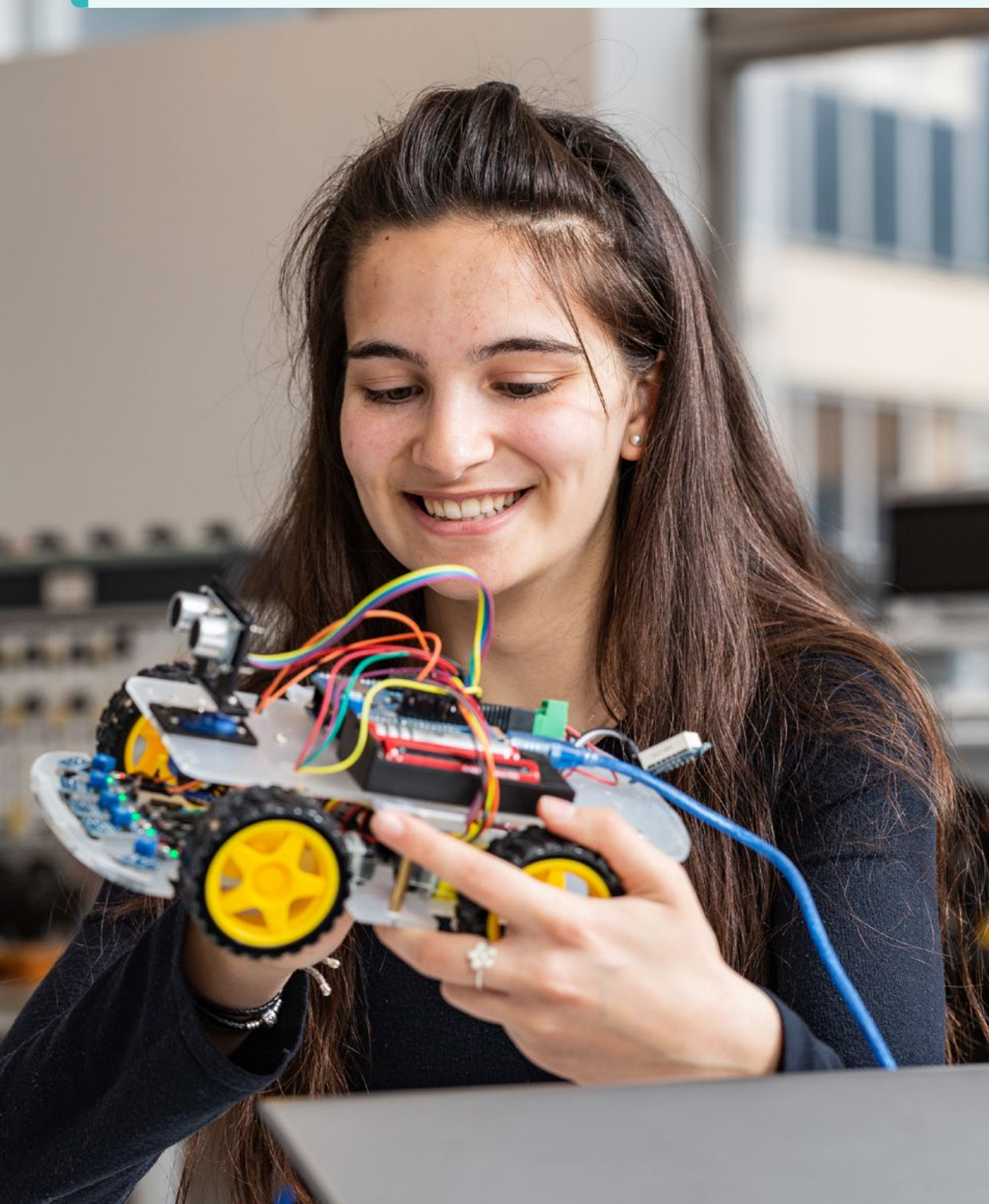


Visit our website for more information:  
[go.bath.ac.uk/electrical-elec-eng-25](https://go.bath.ac.uk/electrical-elec-eng-25)

**Top 10** for career after 15 months for Electrical and Electronic Engineering in the Guardian University Guide 2024

**Top 10** for Electrical and Electronic Engineering in the Complete University Guide 2024

# Integrated mechanical and electrical engineering



**Combine the core elements** of both engineering sciences to design and manufacture electrical and mechanical devices, technologies, and systems.

Industry needs more from their engineers than expertise in one discipline. They want graduates who understand how to combine mechanical and electrical engineering to tackle complex problems. Our course will help you develop a comprehensive knowledge of mechanics, materials, electrical and electronic systems, and circuits. When you graduate, you could begin a career developing the next electric car, designing unmanned aerial vehicles, or increasing the efficiency of sustainable energy sources.

Our MEng degrees give you a more in-depth study experience and our placement options give you the chance to gain professional experience and work with engineers in industry.

## Integrated Mechanical and Electrical Engineering

- BEng (Hons) - Three years
- BEng (Hons) - Four years with professional placement
- MEng (Hons) - Four years
- MEng (Hons) - Five years with professional placement

### Entry Requirements

<b>A level</b> Typical Offer	AAA or A*AB in three A levels including A in Mathematics and A in Physics.
<b>A level</b> Contextual Offer	AAB in three A levels including A in Mathematics and A in Physics.
<b>IB Diploma</b> Typical Offer	36 points and 6, 6, 6 or 7, 6, 5 in three Higher Level subjects including 6 in Physics and 6 in either HL Mathematics.
<b>IB Diploma</b> Contextual Offer	36 points and 6, 6, 5 in three Higher Level subjects including 6 in Physics and 6 in either HL Mathematics.
<b>GCSE</b>	4 or C in English Language or Literature (or equivalent from category C – see page <a href="#">43</a> ).



We are currently going through the reaccreditation process with the Institution of Engineering and Technology and Institution of Mechanical Engineers for 2025 entry and are waiting on the outcome.



Visit our website for more information: [go.bath.ac.uk/int-mech-elec-25](https://go.bath.ac.uk/int-mech-elec-25)

**3rd** for Mechanical Engineering in the Guardian University Guide 2024

**Top 10** for Electrical and Electronic Engineering in the Complete University Guide 2024



# International development



## International development concerns the global challenge of combating poverty and injustice.

The subject helps you to critically examine the effects of policy, projects and businesses on people's wellbeing and future opportunities.

You'll apply theories and methods from economics, politics, sociology and anthropology to analyse how governments, organisations and communities engage with global challenges. Using case studies and diverse forms of data, you'll explore what works in practice, how, why and for whom.

You will be able to benefit from the work of our Centre for Development Studies. This will allow you to engage with contemporary research that informs international policy and practice.

**"I really enjoy the flexible approach to learning the course takes. You can really develop your knowledge in all areas or choose to focus on topics which interest you more."**

**Josie**, BSc (Hons) International Development with Economics

\*Data for these courses is represented in some league tables under Economics due to league table groupings.

## International Development with Economics

- BSc (Hons) - Three years
- BSc (Hons) - Four years with professional placement

### Entry Requirements

<b>A level</b> Typical Offer	AAB in three A levels.
<b>A level</b> Contextual Offer	ABB in three A levels.
<b>IB Diploma</b> Typical Offer	36 points and 6, 6, 5 in three Higher Level subjects.
<b>IB Diploma</b> Contextual Offer	35 points and 6, 5, 5 in three Higher Level subjects.
<b>GCSE</b>	7 or A in Mathematics. 4 or C in English Language or Literature (or equivalent from category B – see page 43).



Visit our website for more information:  
[go.bath.ac.uk/int-dev-econ-25](https://go.bath.ac.uk/int-dev-econ-25)

**Top 100** in the world for Development Studies in the QS World University Rankings 2023

**Top 10** for Economics in the Complete University Guide 2024\*

**Joint 1st** for Career after 15 Months for Economics in the Guardian University Guide 2024\*

# Modern languages



**Strong communication skills** are invaluable in an increasingly globalised society. Being able to communicate effectively in other languages can open exciting personal opportunities in your career and life.

Whether at beginner (*ab initio*) or advanced level, you'll work to achieve fluency in your chosen languages. You'll also enhance your understanding of other cultures, learn about the geographical nuances of language, and explore different ways of life.

The skills you'll gain will be transferable to a wide variety of careers. Our graduates go on to work in diverse areas, such as translation and interpreting, diplomacy, the civil service, marketing and advertising, international organisations, education, and journalism.

**"Studying an *ab initio* language at Bath is really rewarding. The additional contact hours and the learning environment help you to immerse yourself and gain confidence in the language."**

**George**, BA (Hons) Modern Languages  
(Spanish and *ab initio* Italian)

## Modern Languages

- BA (Hons) - Four years with study or work abroad

### Language options

You'll study two languages during this course. For the first, you must choose one advanced-level language from French, German or Spanish. For the second, you can choose either another of these advanced-level options, or any one of the following language options at beginner-level - French, German, Italian, Mandarin, Russian or Spanish.

For both advanced and beginner-level pathways, you'll also learn about the cultures, societies and histories of the countries in which your languages are spoken.

### Entry Requirements

Advanced Language Options	Your A level and IB Higher Level subjects must include any language you will study at advanced level.
<b>A level</b> Typical Offer	ABB in three A levels.
<b>A level</b> Contextual Offer	BBB in three A levels.
<b>IB Diploma</b> Typical Offer	35 points and 6, 5, 5 in three Higher Level subjects.
<b>IB Diploma</b> Contextual Offer	35 points and 5, 5, 5 in three Higher Level subjects.
<b>GCSE</b>	4 or C in English Language or Literature (or equivalent from category C – see page 43).



Visit our website for more information:  
[go.bath.ac.uk/mod-lang-25](https://go.bath.ac.uk/mod-lang-25)

**Top 10** for Languages and Linguistics in the Guardian University Guide 2024

**Top 10** for Iberian Languages in the Complete University Guide 2024

**Joint 1st** for Graduate Prospects in French in the Complete University Guide 2024

# Mathematical sciences



**Mathematics** bridges the gap between the theoretical and physical worlds and is crucial for many other subjects – from the physical and social sciences, to management and business. Our courses will give you a strong theoretical and practical understanding in mathematics, statistics and computing.

We also aim to give you an appreciation of the scope, value and beauty of mathematics. From that solid start, you'll become highly adept at problem solving and ready for a successful career in many fields.

You'll have the option to study abroad or do a professional placement through our excellent links with leading research institutions and industry.

Our courses are flexible and allow for a wide choice of units after year one. You may switch between our Mathematics and our Mathematics and Statistics courses at any stage during year one. Switches to or from our Mathematics, Statistics and Data Science course can be done at the end of year one if you achieve a sufficiently high mark.

**"I am so glad that I went on placement because coming back to university, I have a lot of direction in terms of where I want to take my degree."**

**Anisah**, BSc (Hons) Mathematics and Statistics with professional placement



These courses are accredited by the Institute of Mathematics and its Applications (IMA), to meet partially their academic requirements (BSc) and meet fully the academic requirements (MMath) for registrations as a Chartered Mathematician.

We also offer a course in:

**Computer Science and Mathematics**  
– see page **65**

**Economics and Mathematics**  
– see page **69**

**Mathematics and Physics**  
– see page **87**



## Mathematics

- BSc (Hons) - Three years
- BSc (Hons) - Four years with professional placement or study abroad
- MMath (Hons) - Four years
- MMath (Hons) - Four years with study abroad
- MMath (Hons) - Five years with professional placement

## Mathematics and Statistics

- BSc (Hons) - Three years
- BSc (Hons) - Four years with professional placement or study abroad

### Entry Requirements

<b>A level</b> Typical Offer	A*AA in three A levels including A*A in Mathematics and Further Mathematics. <b>Alternative offers are available online if you are studying Further Mathematics at AS-level.</b>
<b>A level</b> Contextual Offer	A*A in A level Mathematics and Further Mathematics plus B in a third A level.
<b>IB Diploma</b> Typical Offer	36 points and either 7, 6, 6 in three Higher Level subjects including 6 in Mathematics: Analysis & Approaches or 7, 6, 5 in three Higher Level subjects including 7 in Mathematics: Analysis & Approaches.
<b>IB Diploma</b> Contextual Offer	36 points and 7, 6, 5 in three Higher Level subjects including 6 in Mathematics: Analysis & Approaches.
<b>GCSE</b>	4 or C in English Language or Literature (or equivalent from category C – see page 43).

## Mathematics, Statistics and Data Science

- BSc (Hons) - Three years
- BSc (Hons) - Four years with professional placement or study abroad

### Entry Requirements

<b>A level</b> Typical Offer	A*AA in three A levels including A* in Mathematics and A in a second quantitative subject. <b>You do not need Further Mathematics to apply; alternative offers are available online if you are studying A level Further Mathematics.</b>
<b>A level</b> Contextual Offer	A*AB in three A levels including A* in Mathematics and A in a second quantitative subject. <b>You do not need to study Further Mathematics to apply.</b>
<b>IB Diploma</b> Typical Offer	36 points and either 7, 6, 6 in three Higher Level subjects including 6 in Mathematics: Analysis & Approaches or 7, 6, 5 in three Higher Level subjects including 7 in Mathematics: Analysis & Approaches.
<b>IB Diploma</b> Contextual Offer	36 points and 7, 6, 5 in three Higher Level subjects including 6 in Mathematics: Analysis & Approaches.
<b>GCSE</b>	4 or C in English Language or Literature (or equivalent from category C – see page 43).



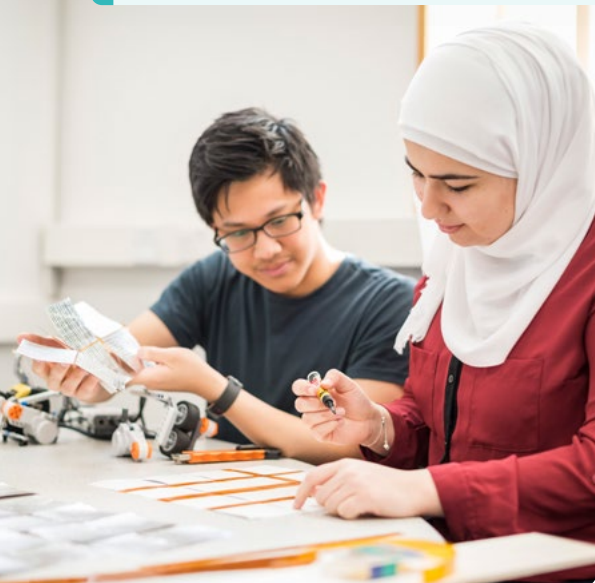
Visit our website for more information:  
[go.bath.ac.uk/maths-25](https://go.bath.ac.uk/maths-25)

**2nd** for graduate prospects for Mathematics in the Complete University Guide 2024

**2nd** for career after 15 months for Mathematics in the Guardian University Guide 2024

**Top 5** for graduate prospects for Mathematics in The Times and The Sunday Times Good University Guide 2024

# Mechanical engineering



## Mechanical engineering

brings together creativity with maths and physics to design and manufacture machines, technologies, and systems.

Engineers are not afraid to test the limits of what is possible. At Bath, we give you the tools to do this by complementing your engineering knowledge with practical and transferable skills such as design, business, and management. When you graduate, you'll have the technical leadership, initiative, and interpersonal skills to pursue a career designing low-carbon vehicles, advancing biomedical products or developing the aircraft of the future.

Our placement option gives you the chance to gain professional experience and work with engineers in industry. You can move between any of our courses or transfer between BEng and MEng up until the end of your second year.

## Aerospace Engineering

- BEng (Hons) - Three years
- BEng (Hons) - Four years with professional placement
- MEng (Hons) - Four years
- MEng (Hons) - Five years with professional placement



These courses are accredited by the Institution of Mechanical Engineers (IMechE) and the Royal Aeronautical Society under licence from the UK regulator, the Engineering Council, to partially meet the academic requirements (BEng degrees) and fully meet the academic requirements (MEng degrees) for registration as a Chartered Engineer (CEng).

## Integrated Design Engineering

- BEng (Hons) - Three years
- BEng (Hons) - Four years with professional placement
- MEng (Hons) - Four years
- MEng (Hons) - Five years with professional placement



These courses are accredited by the Institution of Mechanical Engineers (IMechE) and the Institution of Engineering Designers under licence from the UK regulator, the Engineering Council, to partially meet the academic requirements (BEng degrees) and fully meet the academic requirements (MEng degrees) for registration as a Chartered Engineer (CEng).

## Mechanical Engineering

- BEng (Hons) - Three years
- BEng (Hons) - Four years with professional placement
- MEng (Hons) - Four years
- MEng (Hons) - Five years with professional placement

## Mechanical with Automotive Engineering

- BEng (Hons) - Three years
- BEng (Hons) - Four years with professional placement
- MEng (Hons) - Four years
- MEng (Hons) - Five years with professional placement

## Mechanical Engineering with Manufacturing and Management

- BEng (Hons) - Three years
- BEng (Hons) - Four years with professional placement
- MEng (Hons) - Four years
- MEng (Hons) - Five years with professional placement



The courses above are accredited by the Institution of Mechanical Engineers (IMechE) under licence from the UK regulator, the Engineering Council, to partially meet the academic requirements (BEng degrees) and fully meet the academic requirements (MEng degrees) for registration as a Chartered Engineer (CEng).

### Entry Requirements

<b>A level</b> Typical Offer	A*A*A in three A levels including A* in Mathematics and A in Physics.
<b>A level</b> Contextual Offer	A*AA or A*A*B in three A levels including A* in Mathematics and A in Physics.
<b>IB Diploma</b> Typical Offer	36 points overall and 7,7,6 in three Higher Level subjects including 6 in Physics and 7 in either HL Mathematics.
<b>IB Diploma</b> Contextual Offer	36 points overall and 7,6,6 or 7,7,5 in three Higher Level subjects including 6 in Physics and 7 in either HL Mathematics.
<b>GCSE</b>	4 or C in English Language or Literature (or equivalent from category C – see page 43).

We also offer a course in:

**Integrated Mechanical and Electrical Engineering**  
– see page 75



Visit our website for more information:  
[go.bath.ac.uk/mech-eng-25](https://go.bath.ac.uk/mech-eng-25)

**3rd** for Mechanical Engineering in the Guardian University Guide 2024

**3rd** for Manufacturing and Production Engineering in the Complete University Guide 2024

**3rd** for Aerospace Engineering in the Guardian University Guide 2024



# Natural sciences

**Natural sciences** allows you to study more than one science subject, and in doing so gain a diverse range of skills and knowledge to approach scientific problems from multiple angles. This is a unique perspective that is highly sought after by employers.

In the first week of your course, you'll shape your degree to your career aspirations by choosing a combination of two subjects (out of biochemistry, biology, chemistry, environmental science, pharmacology, or physics - please see our website for permitted combinations), based on your previous qualifications. There are also opportunities to take other subjects such as education, mathematics or management, and gain work experience on a professional placement or by studying abroad. Later you will have the option to specialise in one of your chosen subjects in order to pursue a career in a single discipline, if you decide this is what you'd like to do.

## Natural Sciences

- BSc (Hons) - Three years
- BSc (Hons) - Four years with professional placement or study abroad
- MSci (Hons) - Four years
- MSci (Hons) - Five years with professional placement or study abroad



Our courses have previously been accredited by the Society for Natural Sciences (SNS). The SNS conducts a reaccreditation exercise every few years or when we make changes to the course. We are currently going through this reaccreditation process and are awaiting the outcome of this evaluation.



Visit our website for more information:  
[go.bath.ac.uk/nat-sci-25](http://go.bath.ac.uk/nat-sci-25)

## Entry Requirements

<b>Accepted Subject Combinations</b>	Your A level or IB HL subjects must include one of the following combinations: <ul style="list-style-type: none"><li>• Biology and Chemistry</li><li>• Chemistry and Mathematics</li><li>• Biology, Mathematics and Physics</li><li>• Chemistry, Mathematics and Physics</li></ul>
<b>A level</b> Typical Offer	A*AA in three A levels including an accepted subject combination.
<b>A level</b> Contextual Offer	AAA or A*AB in three A levels including an accepted subject combination (AAA only if your combination includes Physics).
<b>IB Diploma</b> Typical Offer	36 points and 7, 6, 6 in three Higher Level subjects including an accepted subject combination. Combinations can include either HL Mathematics.
<b>IB Diploma</b> Contextual Offer	36 points and 6, 6, 6 or 7, 6, 5 in three Higher Level subjects including 6 in each subject from an accepted combination. Combinations can include either HL Mathematics.
<b>GCSE</b>	6 or B in Mathematics (unless taken at A level)  4 or C in English Language or Literature (or equivalent from category C – see page 43).

**Top 10** for Natural Sciences in The Times and The Sunday Times Good University Guide 2024

**Top 10** for graduate prospects for Natural Sciences in The Times and The Sunday Times Good University Guide 2024



# Pharmacology



**Play a vital role** in the discovery, development and testing of therapeutic agents to improve global health.

Pharmacologists study disease processes and the impact of drugs on the body – where they act, what they do – and research areas of novel drug discovery. You'll gain a thorough understanding of physiology at the molecular, tissue and whole-body level. Through our highly practical classes, you'll develop the necessary skills to prepare you for a career in research or pharmaceutical development.

Our course development is informed by the British Pharmacological Society undergraduate curriculum, with input from industry. Unlike universities that start with a core science year, we teach pharmacology from the outset. This means you'll be going into your placement or final year project with two years of specialist knowledge and practical experience under your belt.

## Pharmacology

- BSc (Hons) - Three years
- BSc (Hons) - Four years with professional placement
- MPharmacol (Hons) - Four years with professional placement

### Entry Requirements

<b>A level</b> Typical Offer	AAB in three A levels including Chemistry and one other science or mathematics subject.
<b>A level</b> Contextual Offer	ABB in three A levels including Chemistry and one other science or mathematics subject.
<b>IB Diploma</b> Typical Offer	36 points and 6, 6, 5 in three Higher Level subjects including Chemistry and a second science or mathematics subject.
<b>IB Diploma</b> Contextual Offer	35 points and 6, 5, 5 in three Higher Level subjects including Chemistry and a second science or mathematics subject.
<b>GCSE</b>	4 or C in Mathematics.  4 or C in English Language or Literature (or equivalent from category B – see page 43).



Visit our website for more information:  
[go.bath.ac.uk/pharmacol-25](https://go.bath.ac.uk/pharmacol-25)

**Top 5** for Pharmacology and Pharmacy in The Times and The Sunday Times Good University Guide 2024

**2nd** for teaching satisfaction for Pharmacy and Pharmacology in the Guardian University Guide 2024

**Joint 3rd** for career after 15 months for Pharmacy and Pharmacology in the Guardian University Guide 2024



# Pharmacy



**Pharmacists** are at the frontline of the modern healthcare system. Experts in medicines design and use, they play a critical role in improving patient health and wellbeing.

Our MPharm course, available to study at either the University of Bath or University of Plymouth, provides a unique knowledge of the scientific development and clinical use of medicines, equipping you with the skills for a rewarding career in pharmacy or pharmaceutical research. You'll gain extensive clinical experience through a variety of placements, giving you the confidence to communicate effectively with patients.

You'll also develop research skills working on a project or with one of our global partners. Recognised as one of the top schools of pharmacy in the UK, Bath MPharm graduates consistently achieve high pass rates in the General Pharmaceutical Council's foundation year assessment (formerly called 'pre-registration year').

If you're thinking of applying for our MPharm course at the University of Plymouth, you should be aware that not all the information in this prospectus will apply to you. Please visit [go.bath.ac.uk/plymouth](https://go.bath.ac.uk/plymouth) for more information on studying the MPharm in Plymouth.

## Pharmacy

- MPharm (Hons) - Four years delivered at the University of Bath
- MPharm (Hons) - Four years delivered at the University of Plymouth

### Entry Requirements

<b>A level</b> Typical Offer	AAB in three A levels including Chemistry and one other science or mathematics subject.
<b>A level</b> Contextual Offer	ABB in three A levels including Chemistry and one other science or mathematics subject.
<b>IB Diploma</b> Typical Offer	36 points and 6, 6, 5 in three Higher Level subjects including Chemistry and a second science.
<b>IB Diploma</b> Contextual Offer	35 points and 6, 5, 5 in three Higher Level subjects including Chemistry and a second science or mathematics subject.
<b>GCSE</b>	4 or C in Mathematics.  4 or C in English Language or Literature (or equivalent from category B – see page 43).



The Master of Pharmacy (MPharm) course is accredited by the General Pharmaceutical Council (GPhC).



Visit our website for more information:  
[go.bath.ac.uk/pharma-25](https://go.bath.ac.uk/pharma-25)

**Top 5** for Pharmacology and Pharmacy in The Times and The Sunday Times Good University Guide 2024

**2nd** for teaching satisfaction for Pharmacy and Pharmacology in the Guardian University Guide 2024

**Joint 3rd** for career after 15 months for Pharmacy and Pharmacology in the Guardian University Guide 2024

# Physics



**Physics** is at the heart of some of the greatest scientific advances of our age.

It has led to discoveries including the Higgs boson, the detection of gravitational waves and the development of quantum computing. Our courses explore the fundamental laws underpinning the universe, from subatomic to cosmological scales.

You'll develop a strong understanding of the underlying theories of physics, combined with practical experience from lab sessions, projects, mathematical modelling and computer simulations. You can take advantage of our strong links with industry and research institutions and go on a professional placement during your degree. Some courses also include a final year research placement, giving you the opportunity to join another leading national or international research institution.

**"** Physics isn't just learning about how galaxies work. It's about being able to look at the problem and say how it all fits together. **"**

**Erin**, BSc (Hons) Physics with professional placement

## Physics

- BSc (Hons) - Three years
- BSc (Hons) - Four years with professional placement or study abroad
- MPhys (Hons) - Four years
- MPhys (Hons) - Four years with research placement
- MPhys (Hons) - Five years with professional placement, research placement or study abroad

## Physics with Astrophysics

- BSc (Hons) - Three years
- BSc (Hons) - Four years with professional placement or study abroad
- MPhys (Hons) - Four years
- MPhys (Hons) - Four years with research placement
- MPhys (Hons) - Five years with professional placement, research placement or study abroad

## Physics with Theoretical Physics

- BSc (Hons) - Three years
- BSc (Hons) - Four years with professional placement or study abroad
- MPhys (Hons) - Four years
- MPhys (Hons) - Four years with research placement
- MPhys (Hons) - Five years with professional placement, research placement or study abroad

## Mathematics and Physics

- BSc (Hons) - Three years
- BSc (Hons) - Four years with professional placement or study abroad
- MSci (Hons) - Four years
- MSci (Hons) - Five years with professional placement or study abroad

## Entry Requirements

<b>A level</b> Typical Offer	A*AA in three A levels including Mathematics and Physics, with A* in Maths or Physics (or Further Mathematics if applicable).
<b>A level</b> Contextual Offer	AAA or A*AB in three A levels including A in Mathematics and A in Physics.
<b>IB Diploma</b> Typical Offer	36 points and 7, 6, 6 in three Higher Level subjects including Physics or either of the two HL Mathematics courses.
<b>IB Diploma</b> Contextual Offer	36 points and 6, 6, 6 or 7, 6, 5 in three Higher Level subjects including Physics or either of the two HL Mathematics courses.
<b>GCSE</b>	4 or C in English Language or Literature (or equivalent from category C – see page 43).



Our BSc courses are accredited by the Institute of Physics (IoP) for partially meeting the educational requirements for Chartered Physicist Status. Our MPhys/MSci courses are accredited by the IoP for fully meeting the educational requirements for Chartered Physicist status.



Visit our website for more information:  
[go.bath.ac.uk/phys-25](https://go.bath.ac.uk/phys-25)

**Top 5** for career after 15 months for Physics in the Guardian University Guide 2024

**Top 5** for graduate prospects for Physics and Astronomy in the Complete University Guide 2024

**Top 5** for graduate prospects for Physics and Astronomy in The Times and The Sunday Times Good University Guide 2024



# Politics



**Politics** is central to so much of our daily lives. Studying it will allow you to understand how and why decisions and policies are made, and their impacts on people's lives.

By exploring political theories and gaining methodological skills, you'll enhance your knowledge of our changing world. This will give you the foundation to analyse and address key challenges facing global societies.

You'll be taught by staff with expertise in conflict, security, climate change, nationalism, populism, international relations, gender, and radical politics.

Graduates often go on to work in the civil service; private and voluntary sectors; banking and finance; and national, European and international media organisations.

**"**The Politics with Economics course at the University of Bath truly challenges one's conventional beliefs. It exposes you to a diverse range of theories and topics, broadening your understanding of the world.**"**

**Muhammad**, BSc (Hons) Politics  
with Economics

## International Politics and Modern Languages

- BA (Hons) - Four years with study or work abroad

### Language options

You can study either an advanced-level language from French, German or Spanish; or a beginner-level language from French, German, Italian, Mandarin, Russian or Spanish.

### Entry Requirements

<b>Advanced Language Options</b>	<b>If you choose to study an advanced-level language, your A level and IB Higher Level subjects must include that language.</b>
----------------------------------	---

<b>A level</b> Typical Offer	AAB in three A levels.
---------------------------------	------------------------

<b>A level</b> Contextual Offer	ABB in three A levels.
------------------------------------	------------------------

<b>IB Diploma</b> Typical Offer	35 points and 6, 6, 5 in three Higher Level subjects.
------------------------------------	---

<b>IB Diploma</b> Contextual Offer	35 points and 6, 5, 5 in three Higher Level subjects.
---------------------------------------	---

<b>GCSE</b>	4 or C in English Language or Literature (or equivalent from category C – see page 43).
-------------	---

## Politics and International Relations

- BSc (Hons) - Three years
- BSc (Hons) - Four years with professional placement or study abroad

### Entry Requirements

<b>A level</b> Typical Offer	AAA or A*AB in three A levels.
---------------------------------	--------------------------------

<b>A level</b> Contextual Offer	AAB in three A levels.
------------------------------------	------------------------

<b>IB Diploma</b> Typical Offer	36 points and 6, 6, 6 or 7, 6, 5 in three Higher Level subjects.
------------------------------------	--

<b>IB Diploma</b> Contextual Offer	36 points and 6, 6, 5 in three Higher Level subjects.
---------------------------------------	---

<b>GCSE</b>	4 or C in English Language or Literature (or equivalent from category C – see page 43).
-------------	---

## Politics with Economics

- BSc (Hons) - Three years
- BSc (Hons) - Four years with professional placement or study abroad

### Entry Requirements

<b>A level</b> Typical Offer	AAA or A*AB in three A levels.
---------------------------------	--------------------------------

<b>A level</b> Contextual Offer	AAB in three A levels.
------------------------------------	------------------------

<b>IB Diploma</b> Typical Offer	36 points and 6, 6, 6 or 7, 6, 5 in three Higher Level subjects.
------------------------------------	--

<b>IB Diploma</b> Contextual Offer	36 points and 6, 6, 5 in three Higher Level subjects.
---------------------------------------	---

<b>GCSE</b>	7 or A in Mathematics.  4 or C in English Language or Literature (or equivalent from category C – see page 43).
-------------	---



Visit our website for more information:  
[go.bath.ac.uk/pol-25](https://go.bath.ac.uk/pol-25)

**Joint 5th** for Career after 15 Months in Politics in the Guardian University Guide 2024

**Joint 5th** for Graduate Prospects in Politics in the Complete University Guide 2024

**Top 10** for Graduate Prospects in Politics in The Times and The Sunday Times Good University Guide 2024

# Psychology



**Psychology** is the scientific study of the mind and behaviour. It explains how we think, feel and act, both individually and as part of social groups.

By studying with us, you'll explore many different areas of psychology. In some cases, you'll carry out research using methods such as brain imaging, interviews and observations.

Our course applies psychological theory to real-world problems. This will provide you with contemporary knowledge and prepare you for a range of careers.

You'll be taught by academics with expertise in clinical, cognitive, developmental, environmental, health, neurological, and social aspects of psychology. Their aim is to help you develop your analytical skills to understand, explain and predict people's behaviour.

We also offer a course in:

**Education with psychology**  
– see page [70](#)

## Psychology

- BSc (Hons) - Three years
- BSc (Hons) - Four years with work placement

### Entry Requirements

<b>A level</b> Typical Offer	A*AA in three A levels.
<b>A level</b> Contextual Offer	AAA or A*AB in three A levels.
<b>IB Diploma</b> Typical Offer	36 points and 7, 6, 6 in three Higher Level subjects.
<b>IB Diploma</b> Contextual Offer	36 points and 6, 6, 6 or 7, 6, 5 in three Higher Level subjects.
<b>GCSE</b>	7 or A in Mathematics.  6 or B in English Language or Literature (or equivalent from category A – see page <a href="#">43</a> ).



**Accredited by and confers eligibility for Graduate Basis for Chartered Membership of the British Psychological Society.**



Visit our website for more information:  
[go.bath.ac.uk/psych-25](https://go.bath.ac.uk/psych-25)

**Top 100** in the world for Psychology in the QS World University Rankings 2023

**Top 5** for Psychology in the Guardian University Guide 2024

**Top 5** for Psychology in the Complete University Guide 2024

**Joint 1st** for Career after 15 Months for Psychology in the Guardian University Guide 2024



# Social work



**Social workers** improve lives. They support, empower and protect vulnerable people, and promote their human rights.

Our course is approved by the professional regulator, Social Work England (SWE). It teaches you how to help a wide range of people in diverse and complex situations, and will develop your professional capabilities in respect of social work knowledge, values, and skills.

Through teaching and your professional practice placement, you'll develop abilities and experience in assessing needs, responding to crises, and advocating on behalf of individuals or communities.

Professionally qualified social workers work in a range of health and social care settings, including the NHS, social services, and private and voluntary social care providers.



**This course is approved by Social Work England (SWE) and prepares you to meet the Professional Capabilities Framework (PCF) for newly qualified social workers and SWE Professional Standards.**



Visit our website for more information:  
[go.bath.ac.uk/soc-work-applied-25](https://go.bath.ac.uk/soc-work-applied-25)

## Social Work and Applied Social Studies

- BSc (Hons) - Three years

### Entry Requirements

**UCAS Tariff Points** 120 UCAS Tariff Points.  
Typical Offer

Your points must include at least one qualification equivalent to one or more A levels, such as:

- A level
- Access to HE Diploma
- BTEC Extended Diploma (QCF or RQF)
- BTEC Diploma (QCF or RQF)
- BTEC Subsidiary Diploma (QCF)
- BTEC Extended Certificate (RQF)
- IB Higher Level Certificate
- Scottish Advanced Higher
- T Level (achieved in full)
- WJEC Applied Diploma

**Other qualifications with UCAS Tariff points can contribute to your total.**

<b>GCSE</b>	4 or C in Mathematics.
	4 or C in English Language or Literature (or equivalent from category B – see page <a href="#">43</a> ).



Calculate your UCAS tariff points at:  
[www.ucas.com/ucas/tariff-calculator](https://www.ucas.com/ucas/tariff-calculator)

**Top 5** for Social Work in The Times and The Sunday Times Good University Guide 2024

**Top 10** for Social Work in the Complete University Guide 2024

**91%** of our submitted research activity for Social Work and Social Policy was rated world-leading or internationally excellent in the Research Excellence Framework (REF) 2021

# Sociology, social policy and social sciences



**Social and policy sciences** help us understand how we're shaped by the institutions, cultural norms, and political and economic values around us.

Our courses aim to provide you with a new lens to see the world. You'll explore if and how the foundations of society could be organised differently, and develop your understanding of challenges faced by people living in different social contexts.

You'll learn about the complex social, political and economic factors behind global issues like climate change, public health, technological change, poverty and inequality.

Graduates often go on to work in government, third sector and business-related roles, as researchers, civil servants, international consultants, or journalists.

## Social Policy

- BSc (Hons) - Three years
- BSc (Hons) - Four years with professional placement

## Sociology

- BSc (Hons) - Three years
- BSc (Hons) - Four years with professional placement

## Sociology and Social Policy

- BSc (Hons) - Three years
- BSc (Hons) - Four years with professional placement

### Entry Requirements

<b>A level</b> Typical Offer	AAB in three A levels.
<b>A level</b> Contextual Offer	ABB in three A levels.
<b>IB Diploma</b> Typical Offer	35 points and 6, 6, 5 in three Higher Level subjects.
<b>IB Diploma</b> Contextual Offer	35 points and 6, 5, 5 in three Higher Level subjects.
<b>GCSE</b>	4 or C in Mathematics.  4 or C in English Language or Literature (or equivalent from category B – see page 43).

## Social Sciences

- BSc (Hons) - Three years
- BSc (Hons) - Four years with professional placement

### Entry Requirements

<b>A level</b> Typical Offer	ABB in three A levels.
<b>A level</b> Contextual Offer	BBB in three A levels.
<b>IB Diploma</b> Typical Offer	35 points and 6, 5, 5 in three Higher Level subjects.
<b>IB Diploma</b> Contextual Offer	35 points and 5, 5, 5 in three Higher Level subjects.
<b>GCSE</b>	4 or C in Mathematics.  4 or C in English Language or Literature (or equivalent from category B – see page 43).



Visit our website for more information:  
[go.bath.ac.uk/soc-pol-25](https://go.bath.ac.uk/soc-pol-25)

**1st** for Graduate Prospects in Social Policy in the Complete University Guide 2024

**3rd** for Social Policy in The Times and The Sunday Times Good University Guide 2024

**Top 5** for Sociology and Social Policy in the Guardian University Guide 2024



# Sport, exercise and health



**By studying sport, exercise and health**, you can explore the impact of physical activity, nutrition and lifestyle on individuals and societies.

Our courses cover the science of sport, coaching and elite performance; the key influencers of health and wellbeing; and the organisation of leisure and physical activity.

They're taught by experts in sports and exercise science, public health, and coaching. Their research in areas like behavioural science, biochemistry, biomechanics, injury prevention, management, nutrition and metabolism, sociology, and sport psychology directly influence the units you'll study.

Graduates have gone on to work in elite sports science, exercise medicine, education, management, coaching and development, and public health.

You can study a sport, exercise and health degree whether you're a sporty person or not.

## Health and Exercise Science

- BSc (Hons) - Three years
- BSc (Hons) - Four years with professional placement

### Entry Requirements

<b>A level</b> Typical Offer	AAB or A*BB or A*AC in three A levels.
<b>A level</b> Contextual Offer	ABB or A*BC or AAC in three A levels.
<b>IB Diploma</b> Typical Offer	36 points and 6, 6, 5 in three Higher Level subjects.
<b>IB Diploma</b> Contextual Offer	35 points and 6, 5, 5 in three Higher Level subjects.
<b>GCSE</b>	4 or C in Mathematics. 4 or C in a science GCSE. 4 or C in English Language or Literature (or equivalent from category C – see page <a href="#">43</a> ).

## Sport Management and Coaching

- BSc (Hons) Three years
- BSc (Hons) Four years with professional placement

### Entry Requirements

**A level**  
Typical Offer AAB or A\*BB or A\*AC in three A levels.

**A level**  
Contextual Offer ABB or A\*BC or AAC in three A levels.

**IB Diploma**  
Typical Offer 36 points and 6, 6, 5 in three Higher Level subjects.

**IB Diploma**  
Contextual Offer 35 points and 6, 5, 5 in three Higher Level subjects.

**GCSE**  
4 or C in Mathematics.  
4 or C in English Language or Literature (or equivalent from category C – see page 43).

## Sport (Sports Performance)

- FdSc – Two years

On successful completion at the required academic standard, you may progress to the one-year BSc (Hons) Sport (Sports Performance) top-up degree.

### Entry Requirements

**A level**  
Typical Offer CCC in three A levels.

**IB Diploma**  
Typical Offer 28 points.

**BTEC (RQF)**  
MMM in a Level 3 National Extended Diploma or DD in a Level 3 National Diploma.

**GCSE**  
4 or C in Mathematics.  
4 or C in English Language or Literature (or equivalent from category C – see page 43).



Visit our website for more information:  
[go.bath.ac.uk/sport-exe-health-25](https://go.bath.ac.uk/sport-exe-health-25)

## Sport and Exercise Science

- BSc (Hons) – Three years
- BSc (Hons) – Four years with professional placement or study abroad
- MSci (Hons) – Four years
- MSci (Hons) – Five years with professional placement or study abroad

### Entry Requirements

**Accepted Science Subjects**  
Your A level and IB Higher Level subjects must include one of: Biology, Chemistry, Further Mathematics, Mathematics, Physics, Psychology, Sport Exercise and Health (IB only) or Statistics.

**A level**  
Typical Offer AAA or A\*AB in three A levels including A in a science subject.

**A level**  
Contextual Offer AAB in three A levels including A in a science subject.

**IB Diploma**  
Typical Offer 36 points and 6, 6, 6 or 7, 6, 5 in three Higher Level subjects including 6 in a science subject.

**IB Diploma**  
Contextual Offer 36 points and 6, 6, 5 in three Higher Level subjects including 6 in a science subject.

**GCSE**  
4 or C in Mathematics.  
4 or C in a science GCSE.  
4 or C in English Language or Literature (or equivalent from category C – see page 43).

**Top 10** in the world for Sports-Related Subjects in the QS World University Rankings 2023

**1st** for Sports Science in the Guardian University Guide 2024

**2nd** for Sports Science in The Times and The Sunday Times Good University Guide 2024

**2nd** for Sports Science in the Complete University Guide 2024

# Experience the University



## Open Days

Our Open Days are the best way to find out what it's like to live and study at Bath. You can explore our campus, find out more about our different subjects, and talk to staff and students.

In 2024, you can come to our Open Days on 14 and 15 June and 7 September.

## Virtual Open Days

Our virtual events give you the opportunity to join in live talks and get your questions answered by staff and students, from wherever you are in the world.

In 2024, our Virtual Open Day will take place on 31 October.

## Campus tours

We run in-person campus tours throughout the year. If you can't join a guided tour, we can also help you plan a self-guided tour at a time to suit you.

## Outreach opportunities

We offer a range of outreach programmes, summer schools, and residential events, including:

### Step into Bath

A paid-for programme open to all year 12 students, giving a real insight into student life at Bath.

### Discover Bath

A free event for year 12 students meeting our widening participation criteria, providing an opportunity to find out what it is like to study one of our subject areas at Bath.

### Target Bath

A free programme for year 12 students of Black African and Caribbean heritage to find out about life at Bath.

### Autism Summer School

A free one-night residential summer school for autistic students to experience university life.





# Important Information



Our prospectus is intended to be a general guide to the courses and facilities available to students starting an undergraduate course in September 2025<sup>1</sup>. The prospectus is prepared a considerable time in advance and we may make changes to our courses in response to, for example:

- feedback from students
- developments in the field of studies
- requirements of accrediting bodies
- any unforeseen or unavoidable circumstances

Before making an application, check our website to make sure you have the most up-to-date information.

Scan QR find out more about studying at Bath.

[go.bath.ac.uk/study-at-bath-25](https://go.bath.ac.uk/study-at-bath-25)



If you're thinking of applying for our MPharm course at the University of Plymouth, you should be aware that not all the information in this prospectus will apply to you. Please visit [go.bath.ac.uk/plymouth](https://go.bath.ac.uk/plymouth) for more information on studying the MPharm in Plymouth.

## Terms and conditions

Our Terms and Conditions provide more details of the circumstances in which we may amend our courses and how we will keep you informed of any changes.

Scan QR to read important terms and conditions for applicants.

[go.bath.ac.uk/ug-ts-and-cs-25](https://go.bath.ac.uk/ug-ts-and-cs-25)



## Recognition of professional qualifications

As well as being recognised as a higher academic qualification, a number of our degrees are also accredited by professional bodies in the United Kingdom. An accredited degree may entitle you to work in a specific profession within the UK, and abroad (where there are reciprocating arrangements with professional bodies in other countries).

The requirements to practise a profession vary from country to country. If you wish to practise your profession outside the United Kingdom, you are advised to confirm that the UK professional qualification you seek is valid in the country in which you are intending to work.

<sup>1</sup>The information in this prospectus is correct at the time of going to print (February 2024).

# Open Days

## in 2024

You can come to an Open Day on campus or join a virtual event to find out about our courses and speak to current students about studying at Bath. Our campus Open Days in 2024 will take place on:

**Friday 14 June • Saturday 15 June**  
**Saturday 7 September**

In 2024, our Virtual Open Day will take place on Thursday 31 October.



Visit [go.bath.ac.uk/ug-opensdays-25](https://go.bath.ac.uk/ug-opensdays-25) to find out more and register for updates.

#BelongatBath



UNIVERSITY OF  
**BATH**



# Connect with us



UniofBath



UniofBath



UniofBath



UniofBath



UniofBath



UniofBath



University of Bath



英国巴斯大学



英国巴斯大学

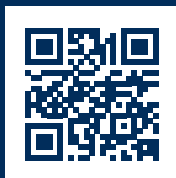


英国巴斯大学



英国巴斯大学

Scan QR to chat with our  
staff and students:  
**[go.bath.ac.uk/chat-25](https://go.bath.ac.uk/chat-25)**



[www.bath.ac.uk](https://www.bath.ac.uk)

P-MC-A-0448-0124



UNIVERSITY OF  
**BATH**