

Information Sheet for Research Associate Applicants – Nov. 2022

The Centre for People-Led Digitalisation (PLD) is Transdisciplinary in nature, with the core purpose of creating methods/tools to assist in the uptake/creation of digital tools. The research undertaken covers many disciplines, E.g., Policy, Human Factors, Design Engineering, Economics, Management, Supply Chain, Digital Tool creation and Manufacturing. We welcome a diverse and wide range of disciplines – we are after your insights to assist in transforming what we do – so diverse is great!

For the researcher roles advertised you are being requested to provide a summary of your proposed research focus, why you believe this is important within the context of PLD and how you would undertake the research (what techniques/methods you might use). Figure 1 summarises, at a top-level the current research focus for our Research Associates/ Research Fellows/PhD Students. Overall, we anticipate 14 researchers and 12-15 PhD students working together within PLD.

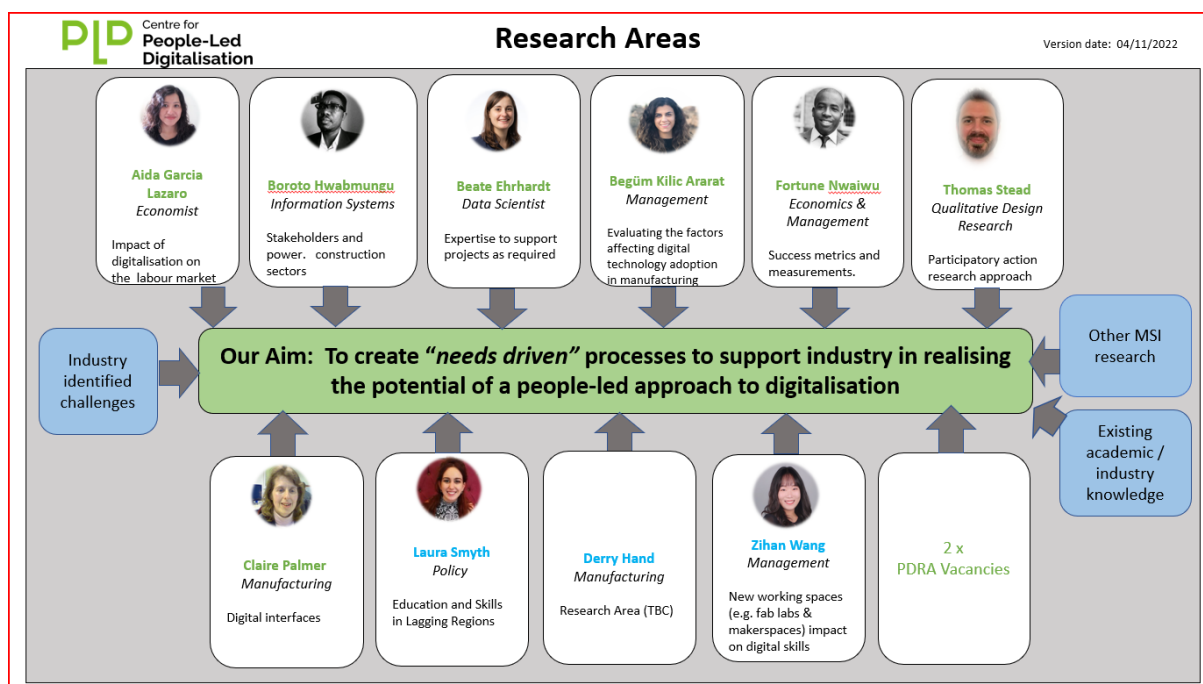


Figure 1 – Current team members and their research focus

Although the researchers are undertaking specific topics, every researcher links their work to the change management process we are creating for use by industry. It is a core requirement that the work you undertake feeds into/enhances/adds value to this process.

To assist you with gaining some insights to the work being done – a suite of videos is available. Please follow this link [Centre for People-Led Digitalisation - YouTube](#)

We look forward to your applications. If you have any queries, please contact pld@bath.ac.uk