

**New areas of responsibility to be incorporated into Campus Services department:**

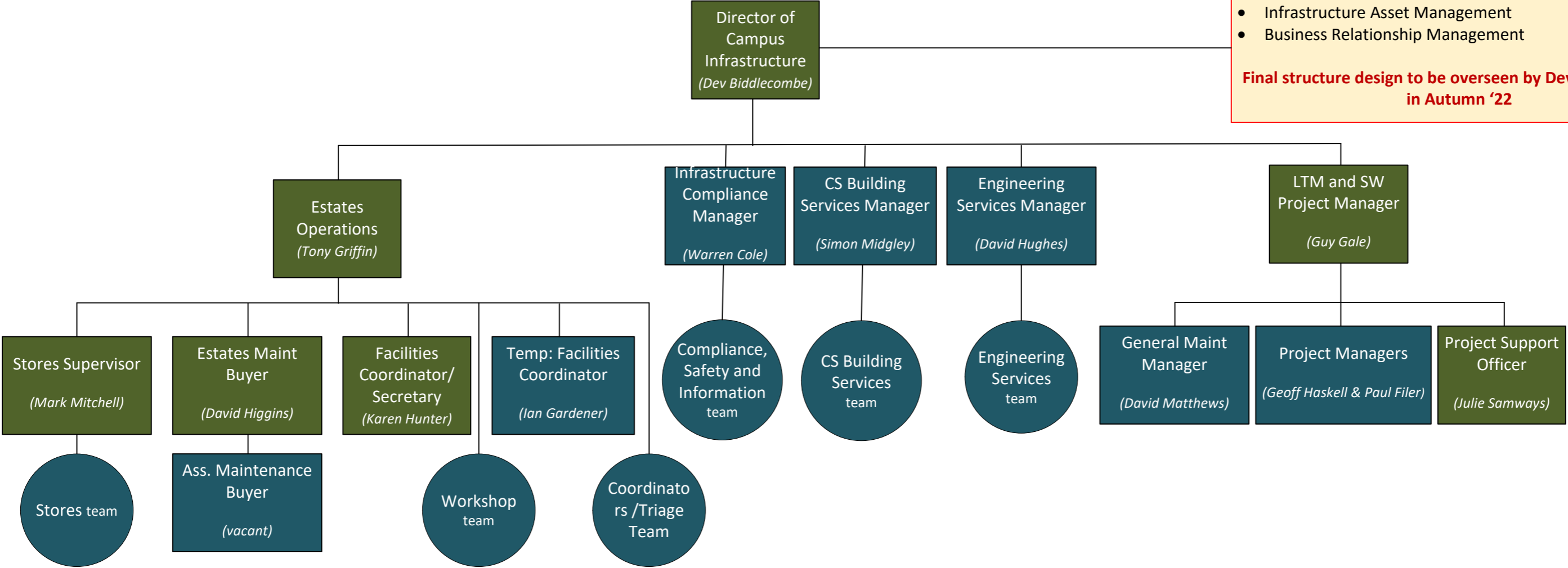
- Purchasing and Inventory Management
- Customer Experience

**Final structure design to be overseen by Jane Loveys in Autumn '22**

**New areas of responsibility to be incorporated into Campus Infrastructure department:**

- Transport Infrastructure
- Campus Infrastructure Sustainability
- Space and Planning
- Infrastructure Asset Management
- Business Relationship Management

**Final structure design to be overseen by Dev Biddlecombe in Autumn '22**



Revised Role (new line management or new reports)	Proposed new roles	Minor Changes	No change
--	--------------------	---------------	-----------

**Summary/Notes**

**Discontinued roles:**

Estates: Director of Estates Operations

**Moved roles:**

Estates to Campus Services: Landscape Supervisor, Mail Services Manager, Facilities Team Manager (plus their teams)  
 Move line management within Estates/CI: Stores Supervisor, Estates Maintenance Buyer, Facilities Coordinator/Secretary, Project Support Officer

**New roles**

CS Transport Services Manager G7 (immediate recruitment)  
 CS Facilities Manager G8 (no immediate recruitment)  
 CS Facilities Administrator G5 (immediate recruitment)  
 TBC: roles to support new areas of responsibility within CI