

EMPLOYABILITY AND STUDENT SUCCESS STRATEGY

2025-26



This strategy sets out the direction of travel and overarching ambitions for the Employability and Student Success teams in 2025-26.

It is a living document, designed to encapsulate the work being done by teams to develop the employability and success of all students at Bath in the coming academic year. We intend for it to reflect and inform our work, but also to evolve as different workstreams progress and come online. This means that it may be updated from time to time and change to ensure it's always representative of the needs of our students.

Aim

Empower Bath students to be future focussed, impact driven and socially minded.

Ambition

To enable all Bath students to fulfil their potential, graduating with the knowledge, skills, experience and confidence required to achieve career success and lifelong employability.

Principles

- Embed employability, enterprise and skills development throughout the student lifecycle
- Facilitate access to professional and work-related learning for all students
- Expand our portfolio of inclusive and innovative employability opportunities
- Enhance and leverage our strategic partnerships with employers and alumni
- Ensure we are connected, cohesive and future focussed

The Bath experience is transformative, supporting Bath graduates to:



The university continues to have a reputation continues to have a reputation amongst **employers** for supporting the development of outstanding students, who operate effectively, and positively impact their organisations

The university continues to have a reputation amongst **past, present, and prospective students** for offering the best professional development opportunities available in the UK Higher Education

- Access to alumni and peer mentoring
- Meaningful Careers-focused conversations
- Opportunities to engage with employers and professional organisations

End to end
Careers support

Personal &
professional
development

- Appropriate curriculum-led skills development
- Opportunities for personalised skills development
- Supported reflective practice (record, reflect, review)

Inspiring &
enriching
experiences

- Appropriate curriculum-led employability development
- Opportunities for professional and entrepreneurial experiential learning
- Rich extra-curricular activities (volunteering, societies, projects)

Empowering every Bath student to realise their potential as a...



Dynamic thinker

Who can work in a complex global environment on challenging projects, with diverse groups, to solve problems.

Dynamic thinking includes:
Critical thinking, data and digital competency, adaptability

who can

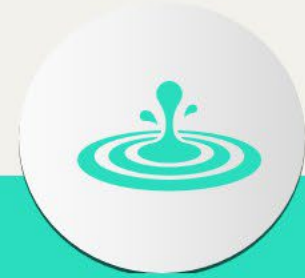


Drive progress

Through managing projects, making decisions, striving for excellence and continuously adapting.

Driving progress includes:
Resilience, creativity, collaboration, drive and initiative

in order to

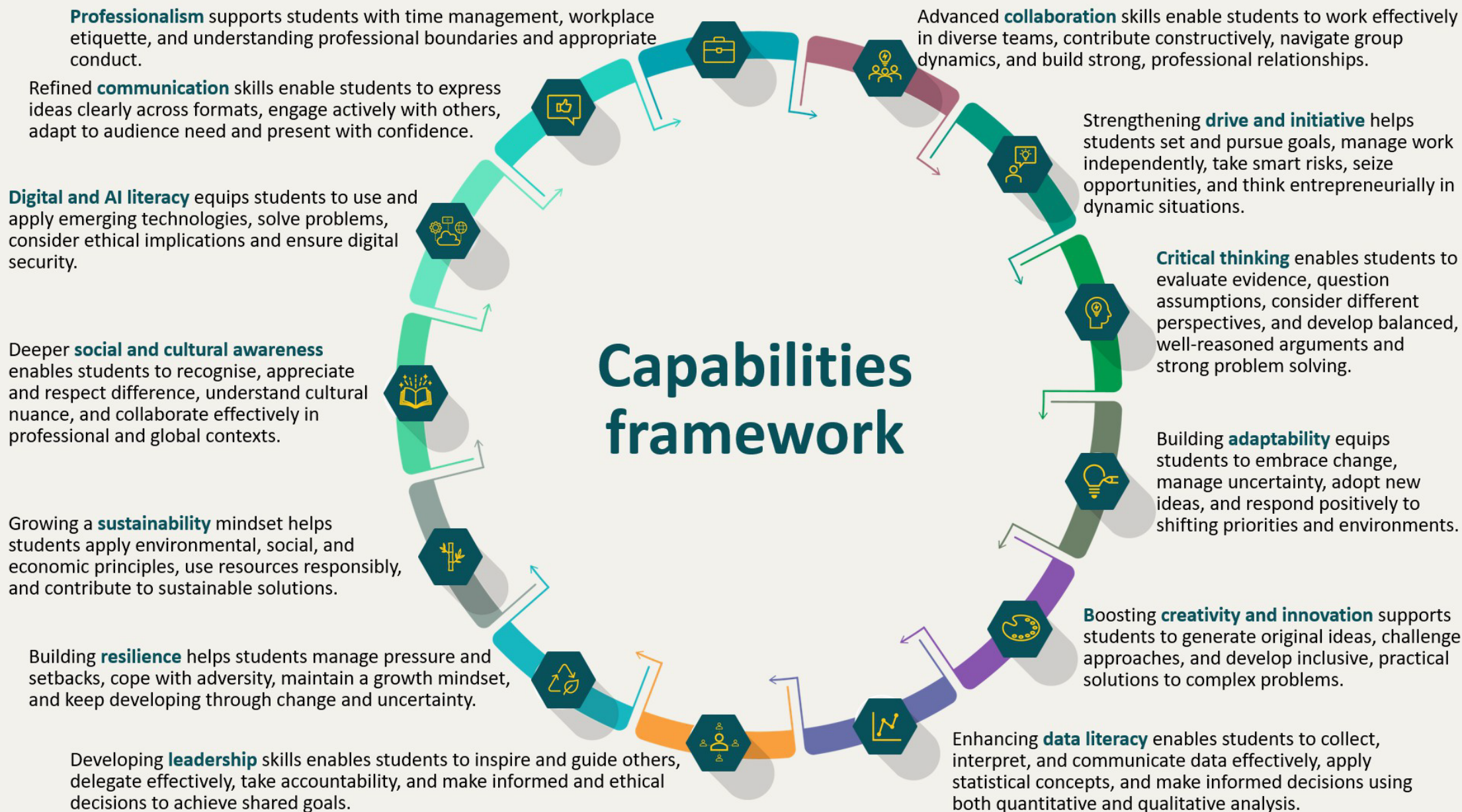


Make an impact

By influencing change, inspiring others and working ethically and sustainably to enhance global and local society

Having impact includes:
Social and cultural awareness, sustainability, professionalism

A new Unihub module underpinned by a new capabilities framework, enabling students to track their skill development on a dashboard and access resources and content to help them develop skills across 13 key capabilities:



Questions

If you have any questions about this document, please contact the Employability and Student Success team by emailing skillscareers-ops@bath.ac.uk.