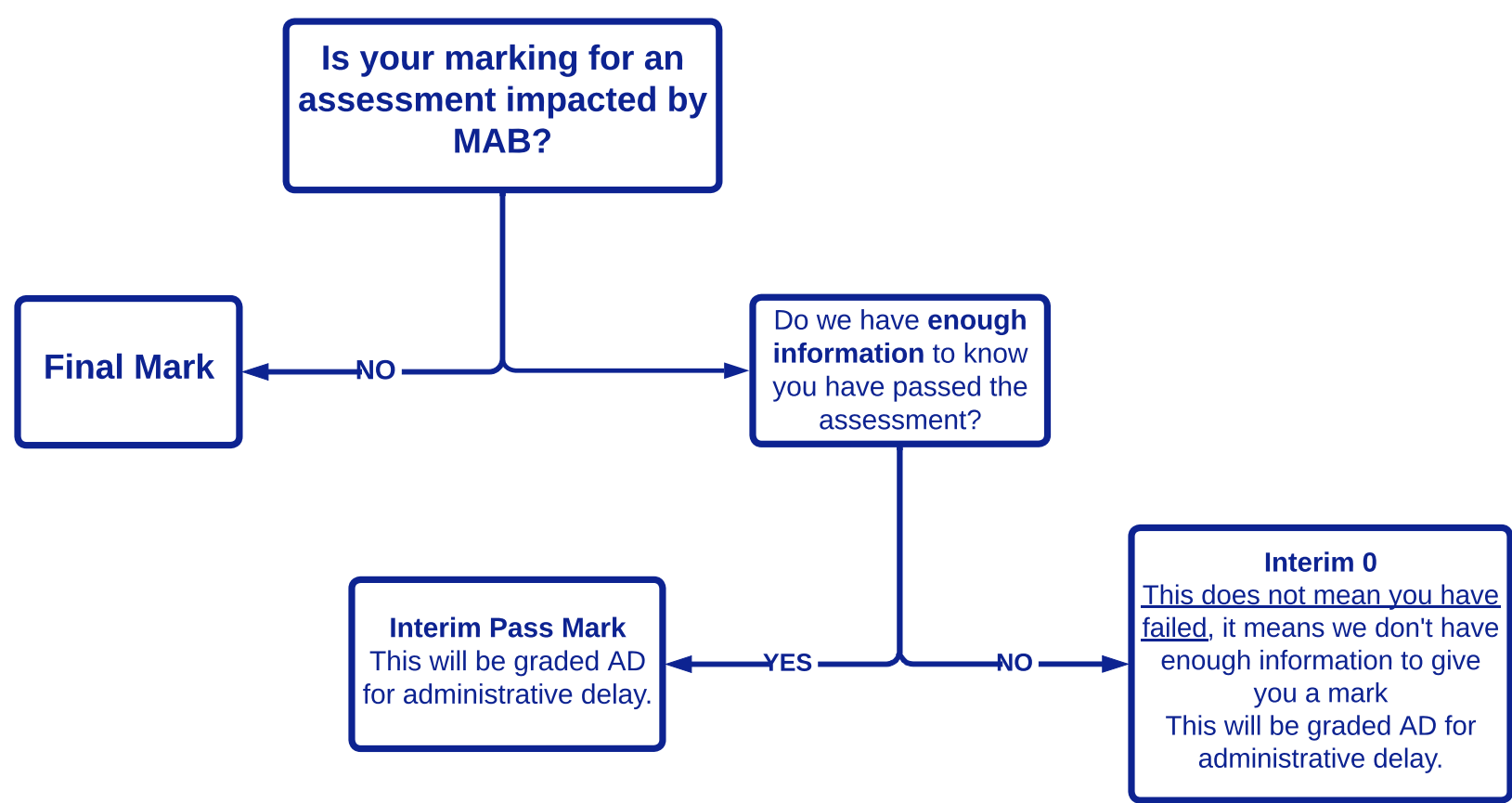


What is the difference between **final** and **interim** marks for assessment?



Interim marks for assessments are used to calculate interim unit marks depending on their weighting within the unit.

When we know your final marks for assessments we will use them to calculate final unit marks.

Final unit marks can only be the same or higher than interim unit marks because your final mark will either be the same or higher than the interim 0 or passmark.

If you have an IMC agreed for your assessment/unit, then we will mark this IMC on your record and consider it at an exam board once your interim assessment/unit marks are replaced by final marks.

## What is the difference between a final award, interim classification and interim award?

