

## Appendix 14: First degree / Parts 1 & 2 / Stand-alone / 30-credit stages / Supplementaries

1. This appendix relates to the detailed stage assessment criteria for:
  - First degree programmes leading to Bachelor awards with honours or to Master of Architecture with honours and integrated first degree stand-alone programmes leading to classified Master awards with honours, and
  - Part 1 and Part 2 decisions with 30-credit stages, at
  - The close of the supplementary assessment period.
  
2. The following abbreviations and rules apply in these detailed criteria (for fuller descriptions see: Appendix 2: Definitions):
  - DAP = designated alternative programme.
  - DEU = designated essential unit; can only be passed  $\geq 40\%$ .
  - OPA = overall programme average.
  - OSA = overall stage average.
  - P1 = “passed 1st attempt” and means  $\geq 40\%$ .
  - C1 = “condonable 1st attempt” and means  $\geq 35\%$  in units that are not DEUs.
  - P2(3) = “passed 2nd attempt (or 3rd attempt where permitted)” – see Appendix 7: Supplementary assessment.
  - C2(3) = “condonable 2nd attempt (or 3rd attempt where permitted) in units that are not DEUs” – see Appendix 7: Supplementary assessment.
  
3. The following detailed assessment criteria will be applied in sequence at the end of a 30-credit stage (after any supplementary assessment) in respect of compulsory or optional/elective units (but excluding extra-curricular units). In relatively rare circumstances where a student has been permitted to trail assessments from the preceding stage to be completed alongside the requirements of the current stage, reference should also be made to Appendix 31: Limited trailing of IMC-related assessments.
  
4. Subject to the overriding limits on the maximum period for completion of study and assessment set out in Regulation 15.7 (see Appendix 1: Integration of the NFAAR with University Regulation 15), after due consideration of the original and supplementary assessment results by the Board of Examiners for Programmes and in the absence of any relevant individual mitigating circumstances, a student who:
  - a. Has passed (P2(3)) all supplementary assessments, including any for designated essential units (DEUs)\*, will be permitted to proceed to the next stage of the programme.
  - b. Has achieved an overall stage average (OSA) of at least 40.00%, and has passed (P2(3)) all supplementary assessments for designated essential units (DEUs), and supplementary assessments for other units such that the total passed (P1 or P2(3)) in the stage is worth at least 21 credits, and has condonable (C2(3)) fails in all of the remaining units worth no more than 9 credits, will have the condonable (C2(3)) fails condoned by compensation\* and will be permitted to proceed to the next stage of the programme.
  - c. Has achieved an overall stage average (OSA) of at least 40.00%, and after a first set of supplementary assessments for the stage has achieved passes (P1 or P2) in units worth at least 21 credits, will have any condonable (C2) supplementary assessment fails in non-designated essential units condoned by compensation\* and will be permitted if the student wishes to suspend study to attempt retrieval of the remaining

failed units under the provisions set out in Appendix 34: Consideration for suspension for retrieval, with a view then to qualifying to proceed to the next academic stage of the programme, or otherwise will be considered under the remaining provisions of this appendix.

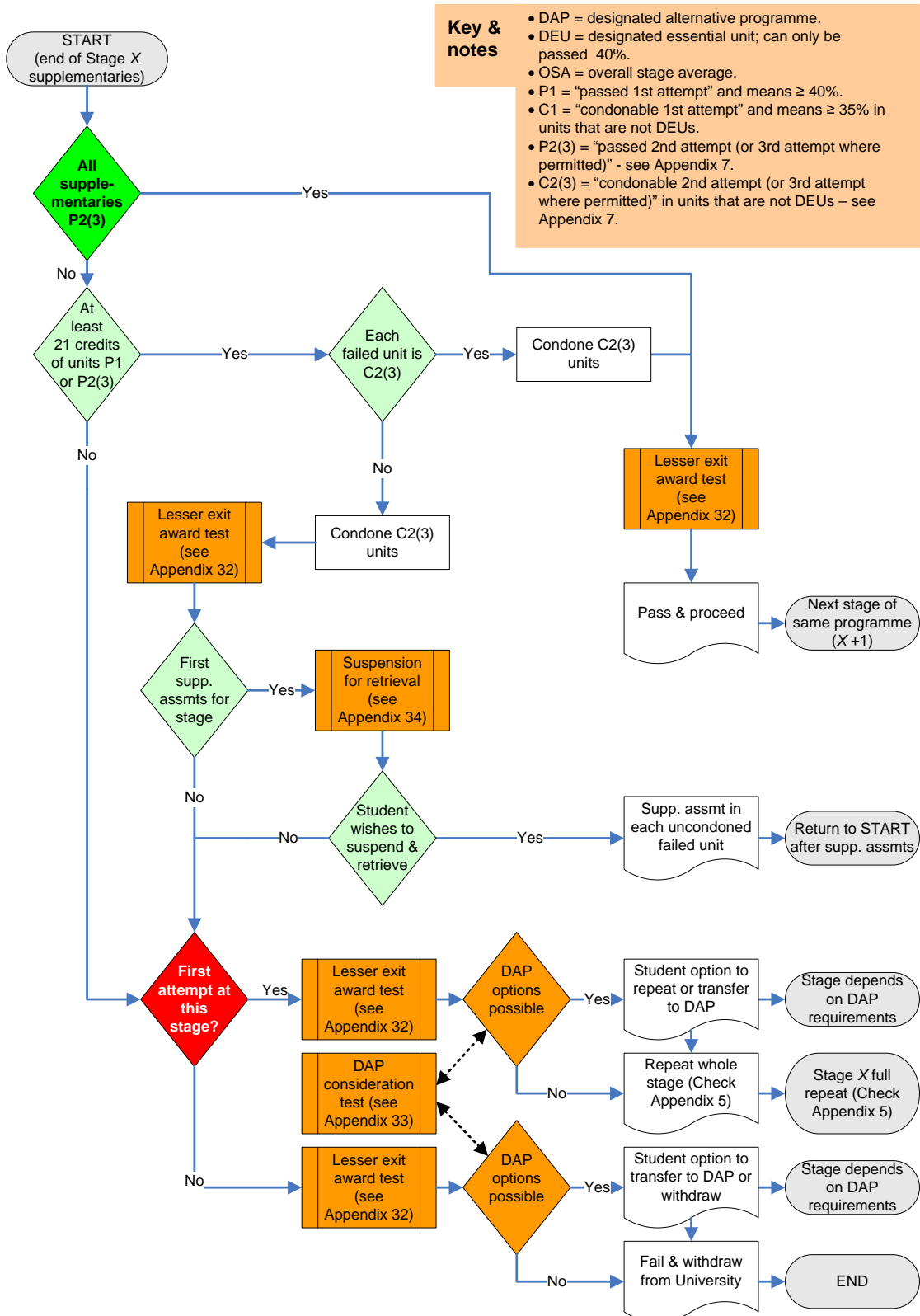
- d. Has not met, in a first attempt at the stage, any of the foregoing criteria\*, will be considered for and may be permitted if the student wishes to transfer to any designated alternative programme (DAP) on the terms specified in its transfer requirements<sup>‡</sup>, or otherwise will be required to repeat the whole stage (teaching and assessment) in the next appropriate academic period, with a view then to qualifying to proceed to the next stage of the programme.
  - e. Has not met, in an attempt at the stage that was not a first attempt, any of the foregoing criteria\*, will be considered for and may be permitted if the student wishes to transfer to any designated alternative programme (DAP) on the terms specified in its transfer requirements<sup>‡</sup>, or otherwise will be required to withdraw from the programme and from the University.
5. The above decision-making process is illustrated as a flowchart below in Figure 7.
6. Special provisions are available in Appendix 31: Limited trailing of IMC-related assessments for the consideration of cases where a student, because of valid and accepted individual mitigating circumstances (IMCs), has not had a second assessment opportunity to complete the assessment requirements for a stage.

---

\* A student who has reached the maximum period for completion of study and assessment set out in Regulation 15.7 (see Appendix 1: Integration of the NFAAR with University Regulation 15), or who *wishes* to leave the programme and the University, may be considered for an exit award in accordance with the provisions set out in Appendix 32: Consideration for award of CertHE/DiplHE.

‡ See Appendix 33: Consideration for transfer to DAP for further information.

Figure 7: First degree / Parts 1 & 2 / Stand-alone / 30-credit stages / Supplementaries



This page is intentionally blank