

## **Appendix 30: First degree / Part 3 / 30-credit stages / Supplementaries**

As results of a formal review of these assessment regulations by the University Senate, different Part 3 decision-making criteria will apply to students depending on when they started their programmes of study.

Students who started or re-started Year 1 of their programmes of study in 2014/15 or later will be subject to the decision-making criteria set out in Section B of this appendix, below. These criteria will also apply to any students admitted to a programme with advanced standing (*i.e.*, not starting at the beginning with all other new entrants) who, had they not been admitted with advanced standing, would have reached their current point with the cohort that started in 2014/15 or later.

All other students will be subject to the decision-making criteria set out in Section A of this appendix, below.

This page is intentionally blank

## Appendix 30, Section A

1. This appendix relates to the detailed stage and degree award assessment criteria for:
  - First degree programmes leading to Bachelor awards with honours or to Master of Architecture with honours and integrated first degree programmes leading to classified Master awards with honours, and
  - Part 3 decisions with 30-credit stages, at
  - The close of the supplementary assessment period.
  
2. The following abbreviations and rules apply in these detailed criteria (for fuller descriptions see: Appendix 2: Definitions):
  - DAP = designated alternative programme.
  - DEU = designated essential unit; can only be passed  $\geq 40\%$ .
  - OPA = overall programme average.
  - OSA = overall stage average.
  - P1 = “passed 1st attempt” and means  $\geq 40\%$ .
  - C1 = “condonable 1st attempt” and means  $\geq 35\%$  in units that are not DEUs.
  - P2 = “passed 2nd attempt” – see Appendix 7: Supplementary assessment.
  - C2 = “condonable 2nd attempt” in units that are not DEUs – see Appendix 7: Supplementary assessment.
  
3. The following detailed assessment criteria will be applied in sequence at the end of a 30-credit stage (after any supplementary assessment) in respect of compulsory or optional/elective units (but excluding extra-curricular units). In relatively rare circumstances where a student has been permitted to trail assessments from the preceding stage to be completed alongside the requirements of the current stage, reference should also be made to Appendix 31: Limited trailing of IMC-related assessments.
  
4. Subject to the overriding limits on the maximum period for completion of study and assessment set out in Regulation 15.7 (see Appendix 1: Integration of the NFAAR with University Regulation 15), after due consideration of the original and supplementary assessment results by the Board of Examiners for Programmes and in the absence of any relevant individual mitigating circumstances, a student who:
  - a. Has passed (P2) all supplementary assessments, and has passed (P1 or P2) units in Part 3 worth at least 24 credits, and has an overall programme average (OPA) of at least 70.00%, will be awarded a degree with First class honours.
  - b. Has passed (P2) all supplementary assessments, and has passed (P1 or P2) units in Part 3 worth at least 24 credits, and has an overall programme average (OPA) of at least 68.00%, and gained at least 70% in each of a number of units in Part 3 worth at least 15 credits, will be awarded a degree with First class honours.
  - c. Has passed (P2) all supplementary assessments, and has passed (P1 or P2) units in Part 3 worth at least 18 credits, and has an overall programme average (OPA) of at least 60.00%, will be awarded a degree with Second class honours Upper division.
  - d. Has passed (P2) all supplementary assessments, and has passed (P1 or P2) units in Part 3 worth at least 18 credits, and has an overall programme average (OPA) of at least 58.00%, and gained at least 60% in each of a number of units in Part 3 worth at least 15 credits, will be awarded a degree with Second class honours Upper division.

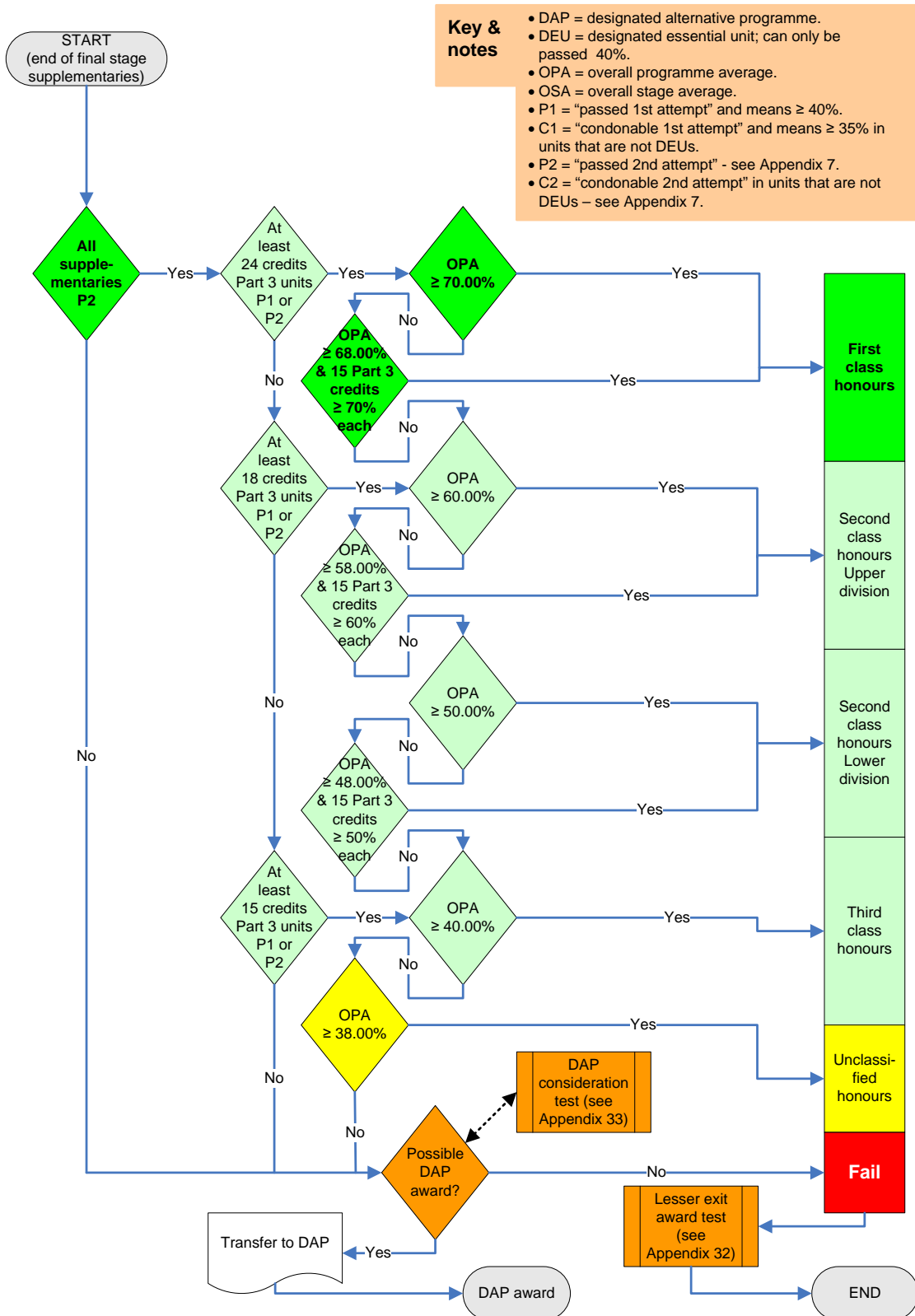
- e. Has passed (P2) all supplementary assessments, and has passed (P1 or P2) units in Part 3 worth at least 18 credits, and has an overall programme average (OPA) of at least 50.00%, will be awarded a degree with Second class honours Lower division.
  - f. Has passed (P2) all supplementary assessments, and has passed (P1 or P2) units in Part 3 worth at least 18 credits, and has an overall programme average (OPA) of at least 48.00%, and gained at least 50% in each of a number of units in Part 3 worth at least 15 credits, will be awarded a degree with Second class honours Lower division.
  - g. Has passed (P2) all supplementary assessments, and has passed (P1 or P2) units in Part 3 worth at least 15 credits, and has an overall programme average (OPA) of at least 40.00%, will be awarded a degree with Third class honours.
  - h. Has passed (P2) all supplementary assessments, and has passed (P1 or P2) units in Part 3 worth at least 15 credits, and has an overall programme average (OPA) of at least 38.00%, will be awarded an Unclassified honours degree.
  - i. Not met any of the foregoing criteria\*, will be considered for transfer to any designated alternative programme (DAP) on the terms specified in its transfer requirements<sup>‡</sup> and for an award from that programme.
  - j. Not met any of the foregoing criteria\* will have failed and will be required to withdraw from the programme and from the University.
5. The above decision-making process is illustrated as a flowchart below in Figure 22.

---

\* A student who has reached the maximum period for completion of study and assessment set out in Regulation 15.7 (see Appendix 1: Integration of the NFAAR with University Regulation 15), or who *wishes* to leave the programme and the University, may be considered for an exit award in accordance with the provisions set out in Appendix 32: Consideration for award of CertHE/DiplHE.

‡ See Appendix 33: Consideration for transfer to DAP for further information.

Figure 22: (Section A) First degree / Part 3 / 30-credit stages / Supplementaries



This page is intentionally blank

## Appendix 30, Section B

1. This appendix relates to the detailed stage and degree award assessment criteria for:
  - First degree programmes leading to Bachelor awards with honours or to Master of Architecture with honours and integrated first degree programmes leading to classified Master awards with honours, and
  - Part 3 decisions with 30-credit stages, at
  - The close of the supplementary assessment period.
  
2. The following abbreviations and rules apply in these detailed criteria (for fuller descriptions see: Appendix 2: Definitions):
  - DAP = designated alternative programme.
  - DEU = designated essential unit; can only be passed  $\geq 40\%$ .
  - OPA = overall programme average.
  - OSA = overall stage average.
  - P1 = “passed 1st attempt” and means  $\geq 40\%$ .
  - C1 = “condonable 1st attempt” and means  $\geq 35\%$  in units that are not DEUs.
  - P2 = “passed 2nd attempt” – see Appendix 7: Supplementary assessment.
  - C2 = “condonable 2nd attempt” in units that are not DEUs – see Appendix 7: Supplementary assessment.
  
3. The following detailed assessment criteria will be applied in sequence at the end of a 30-credit stage (after any supplementary assessment) in respect of compulsory or optional/elective units (but excluding extra-curricular units). In relatively rare circumstances where a student has been permitted to trail assessments from the preceding stage to be completed alongside the requirements of the current stage, reference should also be made to Appendix 31: Limited trailing of IMC-related assessments.
  
4. Subject to the overriding limits on the maximum period for completion of study and assessment set out in Regulation 15.7 (see Appendix 1: Integration of the NFAAR with University Regulation 15), after due consideration of the original and supplementary assessment results by the Board of Examiners for Programmes and in the absence of any relevant individual mitigating circumstances, a student who:
  - a. Has passed (P2) all supplementary assessments, and has an overall programme average (OPA) of at least 70.00%, will be awarded a degree with First class honours.
  - b. Has passed (P2) supplementary assessments in all designated essential units (DEUs) such that all DEUs are now passed (P1 or P2), and has passed (P1 or P2) units in Part 3 worth at least 21 credits, and has an overall programme average (OPA) of at least 70.00%, will be awarded a degree with First class honours.
  - c. Has passed (P2) supplementary assessments in all designated essential units (DEUs) such that all DEUs are now passed (P1 or P2), and has passed (P1 or P2) units in Part 3 worth at least 21 credits, and has an overall programme average (OPA) of at least 68.00%, and gained at least 70% in each of a number of units in Part 3 worth at least 15 credits, will be awarded a degree with First class honours.
  - d. Has passed (P2) all supplementary assessments, and has an overall programme average (OPA) of at least 60.00%, will be awarded a degree with Second class honours Upper division.
  - e. Has passed (P2) supplementary assessments in all designated essential units (DEUs) such that all DEUs are now passed (P1 or P2), and has passed (P1 or P2)

units in Part 3 worth at least 21 credits, and has an overall programme average (OPA) of at least 60.00%, will be awarded a degree with Second class honours Upper division.

- f. Has passed (P2) supplementary assessments in all designated essential units (DEUs) such that all DEUs are now passed (P1 or P2), and has passed (P1 or P2) units in Part 3 worth at least 21 credits, and has an overall programme average (OPA) of at least 58.00%, and gained at least 60% in each of a number of units in Part 3 worth at least 15 credits, will be awarded a degree with Second class honours Upper division.
- g. Has passed (P2) all supplementary assessments, and has an overall programme average (OPA) of at least 50.00%, will be awarded a degree with Second class honours Lower division.
- h. Has passed (P2) supplementary assessments in all designated essential units (DEUs) such that all DEUs are now passed (P1 or P2), and has passed (P1 or P2) units in Part 3 worth at least 21 credits, and has an overall programme average (OPA) of at least 50.00%, will be awarded a degree with Second class honours Lower division.
- i. Has passed (P2) supplementary assessments in all designated essential units (DEUs) such that all DEUs are now passed (P1 or P2), and has passed (P1 or P2) units in Part 3 worth at least 21 credits, and has an overall programme average (OPA) of at least 48.00%, and gained at least 50% in each of a number of units in Part 3 worth at least 15 credits, will be awarded a degree with Second class honours Lower division.
- j. Has passed (P2) supplementary assessments in all designated essential units (DEUs) such that all DEUs are now passed (P1 or P2), and has passed (P1 or P2) units in Part 3 worth at least 21 credits, and has an overall programme average (OPA) of at least 40.00%, will be awarded a degree with Third class honours.
- k. Has passed (P2) supplementary assessments in all designated essential units (DEUs) such that all DEUs are now passed (P1 or P2), and has passed (P1 or P2) units in Part 3 worth at least 21 credits, and has an overall programme average (OPA) of at least 38.00%, will be awarded an Unclassified honours degree.
- l. Not met any of the foregoing criteria\*, will be considered for transfer to any designated alternative programme (DAP) on the terms specified in its transfer requirements<sup>‡</sup> and for an award from that programme.
- m. Not met any of the foregoing criteria\* will have failed and will be required to withdraw from the programme and from the University.

5. The above decision-making process is illustrated as a flowchart below in Figure 23.

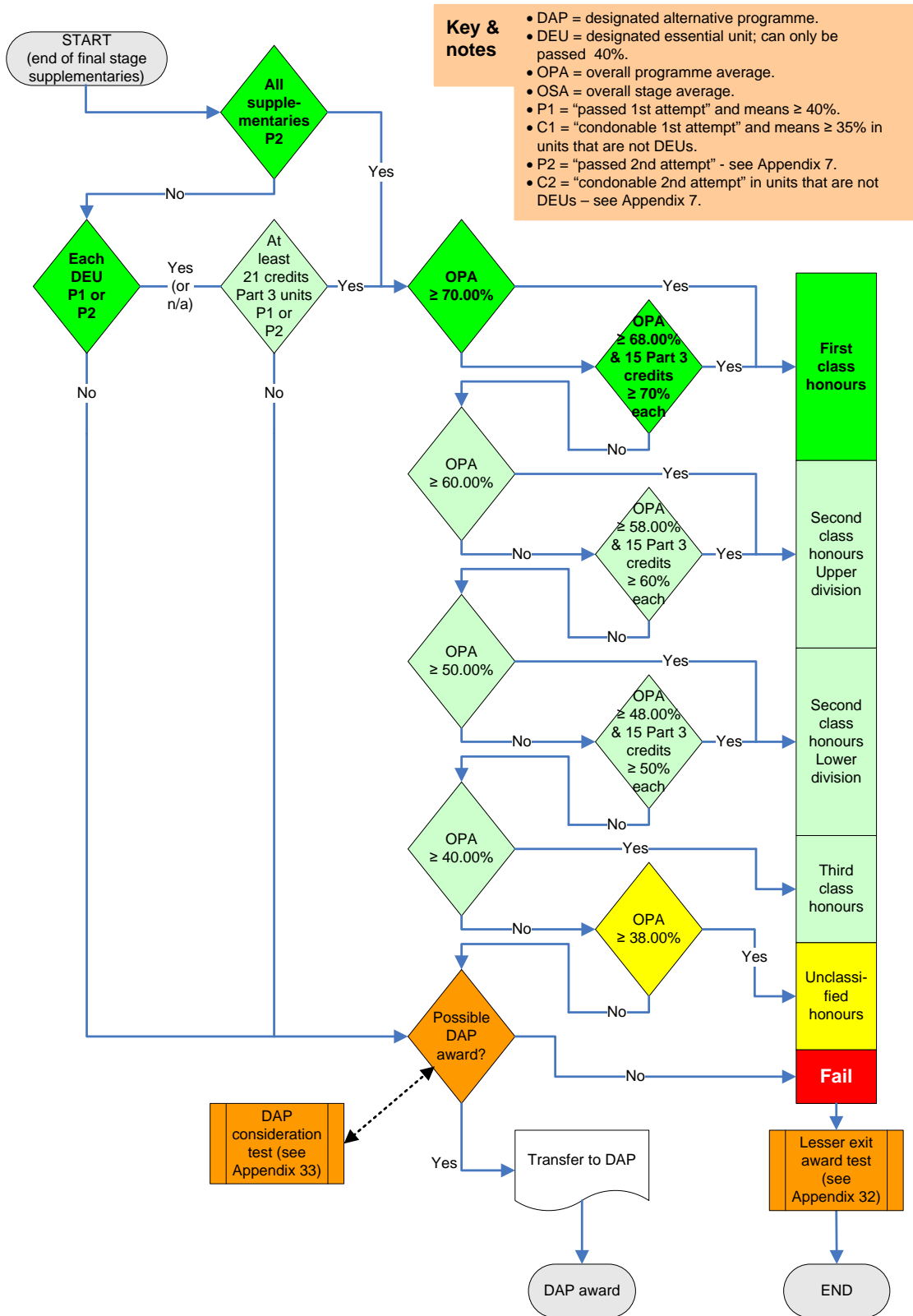
---

\* A student who has reached the maximum period for completion of study and assessment set out in Regulation 15.7 (see Appendix 1: Integration of the NFAAR with University Regulation 15), or who *wishes* to leave the programme and the University, may be considered for an exit award in accordance with the provisions set out in Appendix 32: Consideration for award of CertHE/DipHE.

‡ See Appendix 33: Consideration for transfer to DAP for further information.



Figure 23: (Section B) First degree / Part 3 / 30-credit stages / Supplementaries



This page is intentionally blank