

Appendix 34: Consideration for suspension for retrieval

1. This appendix relates to consideration for a period of suspension of study, during which failed units (within limits) might be retrieved before progression to the next stage of a programme. The relevant principles are:
 - A continuing student on a stand-alone programme who has failed supplementary assessment up to 18 credits in a 60-credit stage (or 9 in a 30-credit stage) will be allowed to suspend for reassessment of the failed units only. The marks gained in the further attempt at supplementary assessment will not contribute to the overall stage average (OSA) nor, where appropriate, to the overall programme average (OPA). This provision becomes effective from the 2014/15 academic year. It is a permissive provision, and if the student chooses not to take it up, the following provision would apply.
 - A continuing student on a stand-alone programme who has failed more than 18 credits in a 60-credit stage (or 9 in a 30-credit stage) will be required to repeat the full stage. The marks awarded will contribute to the overall stage average (OSA) and, where appropriate, overall programme average (OPA).

2. The following abbreviations and rules apply in these detailed criteria (for fuller descriptions see: Appendix 2: Definitions):
 - DAP = designated alternative programme.
 - DEU = designated essential unit; can only be passed $\geq 40\%$.
 - OPA = overall programme average.
 - OSA = overall stage average.
 - P1 = “passed 1st attempt” and means $\geq 40\%$.
 - C1 = “condonable 1st attempt” and means $\geq 35\%$ in units that are not DEUs.
 - P2 = “passed 2nd attempt” – see Appendix 7: Supplementary assessment.
 - C2 = “condonable 2nd attempt” in units that are not DEUs – see Appendix 7: Supplementary assessment.

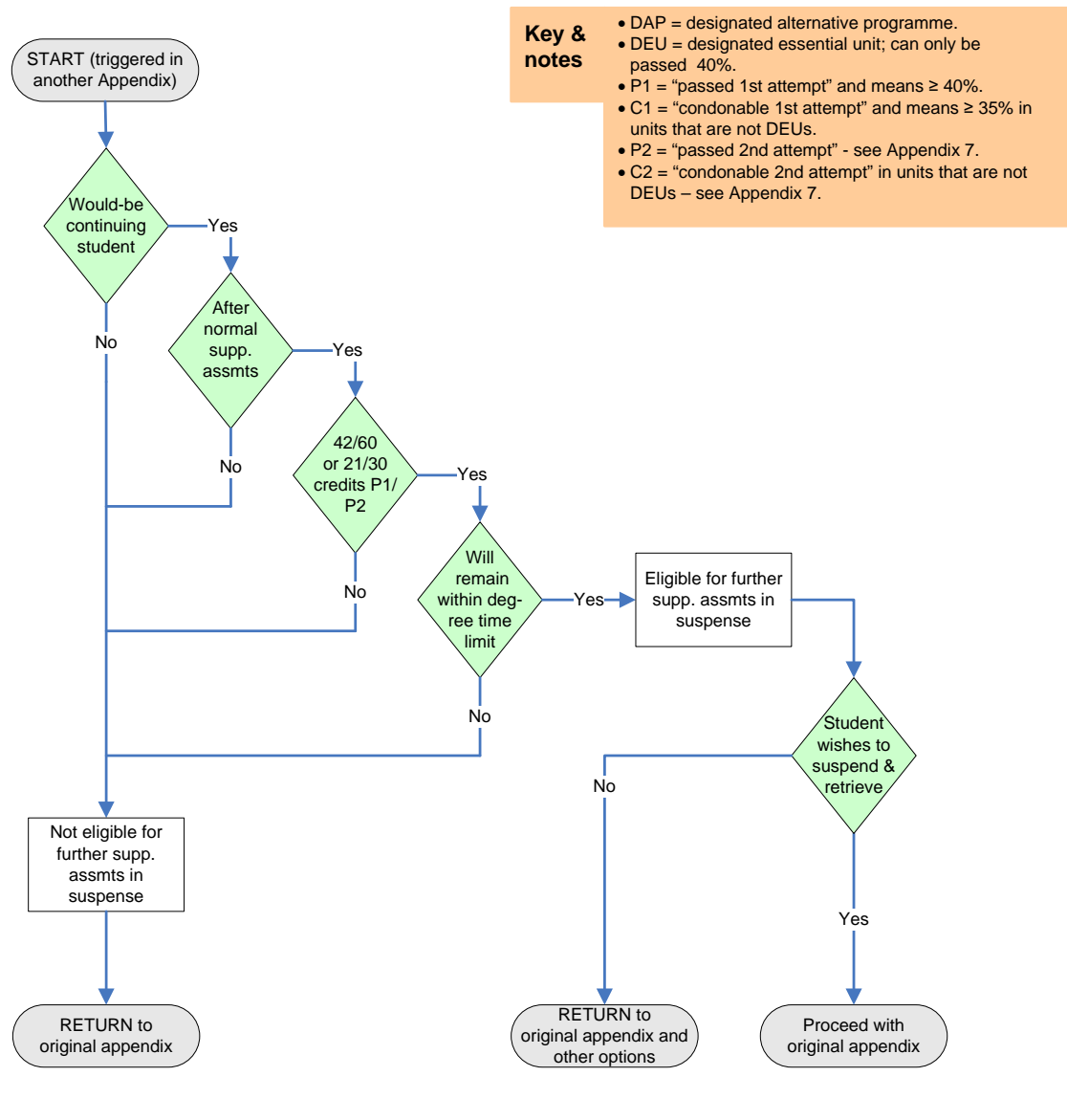
3. The following detailed assessment criteria will be applied in sequence in respect of compulsory or optional/elective units (but excluding extra-curricular units) triggered, where appropriate, in decision-making appendices for students on stand-alone programmes after supplementary assessments:
 - a. Appendix 12: First degree / Parts 1 & 2 / Stand-alone / 60-credit stages / Supplementaries.
 - b. Appendix 14: First degree / Parts 1 & 2 / Stand-alone / 30-credit stages / Supplementaries

4. Subject to the overriding limits on the maximum period for completion of study and assessment set out in Regulation 15.7 (see Appendix 1: Integration of the NFAAR with University Regulation 15), after due consideration of the original and (first) supplementary assessment results by the Board of Examiners for Programmes and in the absence of any relevant individual mitigating circumstances, a would-be continuing student on a stand-alone programme who:
 - a. Has achieved an overall stage average (OSA) or at least 40.00%, and has passed (P1 or P2) units worth at least 42 credits in a 60-credit stage, will have any condonable (C2) fails in the first supplementary assessments condoned by compensation*, will be permitted if the student wishes to suspend study to make a third (second supplementary) attempt to retrieve failure in the remaining failed units worth no more than 18 credits before the start of the next academic stage, with a view then to qualifying to proceed to the next academic stage of the programme.

- b.** Has achieved an overall stage average (OSA) or at least 40.00%, and has passed (P1 or P2) units worth at least 21 credits in a 30-credit stage, will have any condonable (C2) fails in supplementary assessments condoned by compensation*, will be permitted if the student wishes to suspend study to make a third (second supplementary) attempt to retrieve failure in the remaining failed units worth no more than 9 credits before the start of the next academic stage, with a view then to qualifying to proceed to the next academic stage of the programme.
 - c.** Has not met either of the foregoing sets of criteria, or does not wish to suspend study to make a third (second supplementary) attempt to retrieve failure in remaining failed units, will be considered under the remaining provisions of the original appendix.
- 5.** The above decision-making process is illustrated as a flowchart below in Figure 28.

* A student who has reached the maximum period for completion of study and assessment set out in Regulation 15.7 (see Appendix 1: Integration of the NFAAR with University Regulation 15), or who *wishes* to leave the programme and the University, may be considered for an exit award in accordance with the provisions set out in Appendix 32: Consideration for award of CertHE/DipIHE.

Figure 28: Suspension for retrieval test



Key & notes

- DAP = designated alternative programme.
- DEU = designated essential unit; can only be passed 40%.
- P1 = "passed 1st attempt" and means $\geq 40\%$.
- C1 = "condonable 1st attempt" and means $\geq 35\%$ in units that are not DEUs.
- P2 = "passed 2nd attempt" - see Appendix 7.
- C2 = "condonable 2nd attempt" in units that are not DEUs - see Appendix 7.

This page is intentionally blank