

Louise Kingham OBE FEI
Chief Executive, Energy Institute

People & energy:

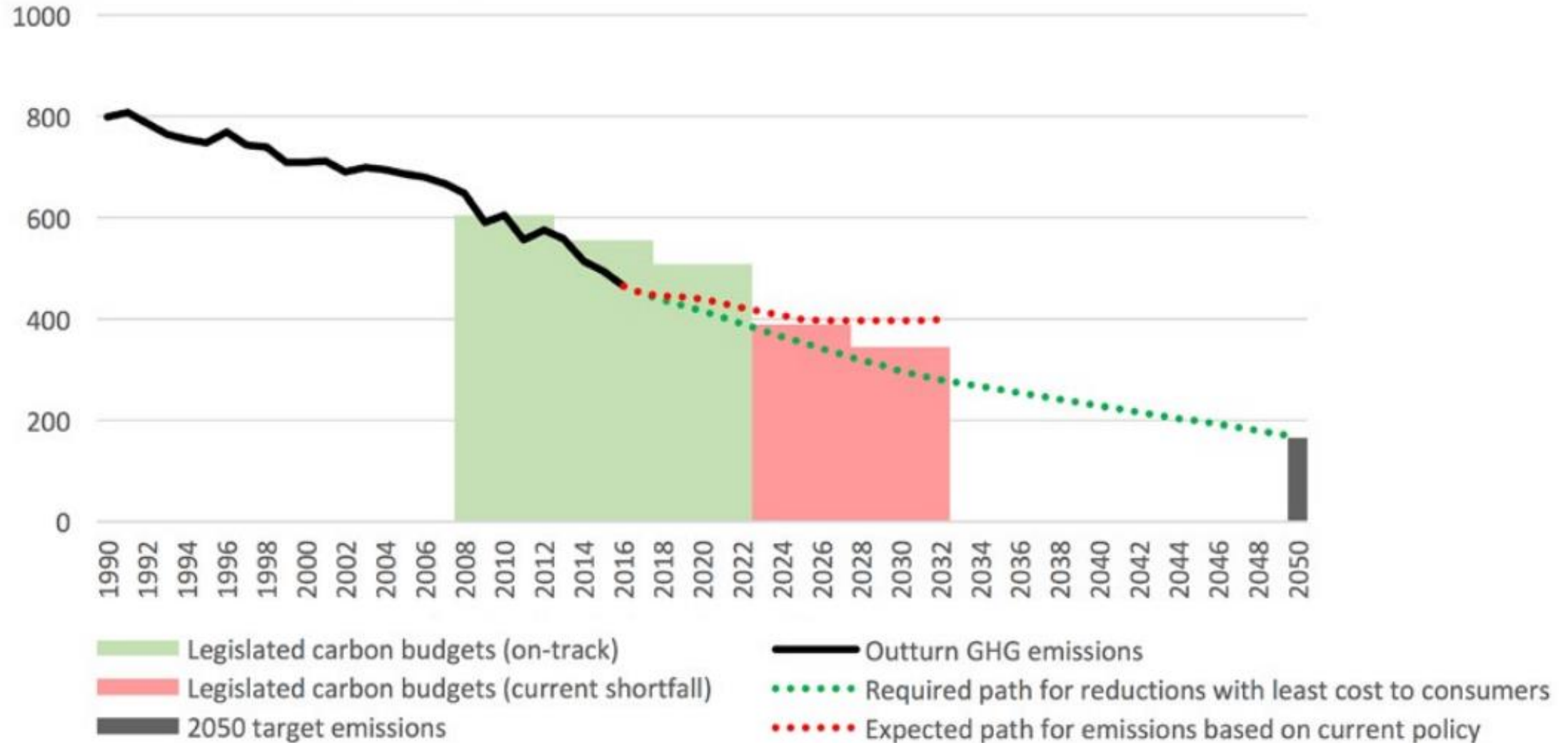
A relationship in transition



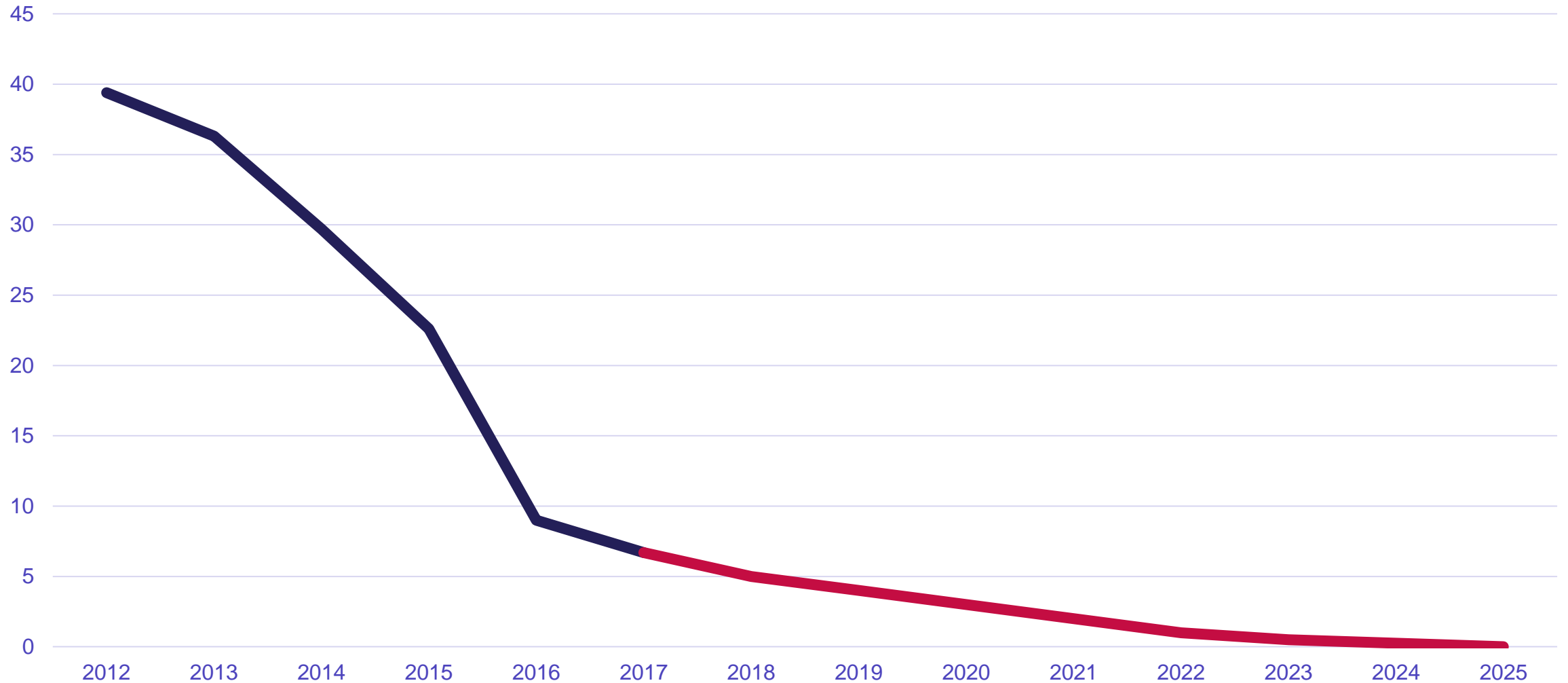
Decarbonisation

UK emissions reduction

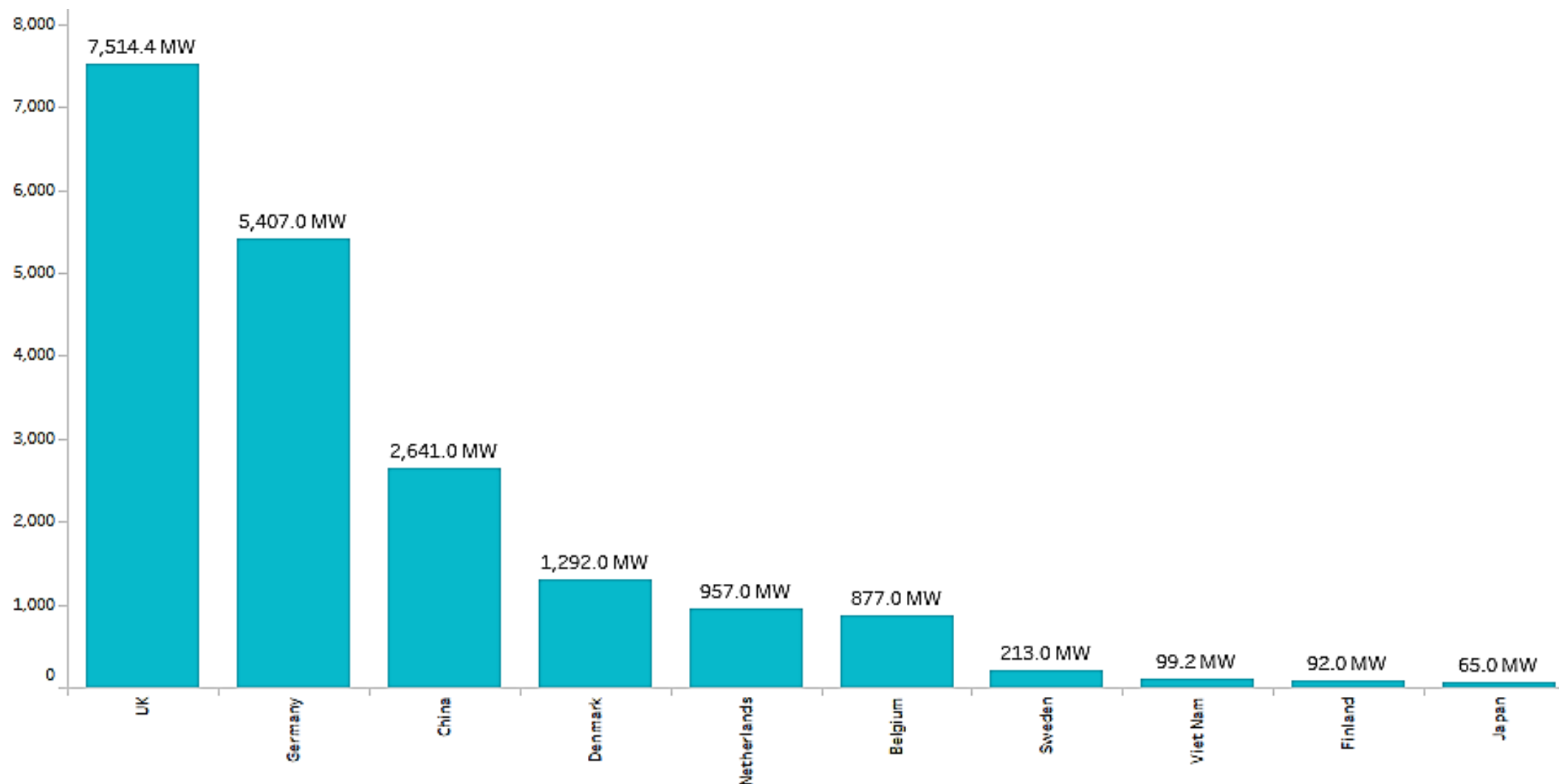
Million tonnes carbon dioxide equivalent (MtCO₂e)



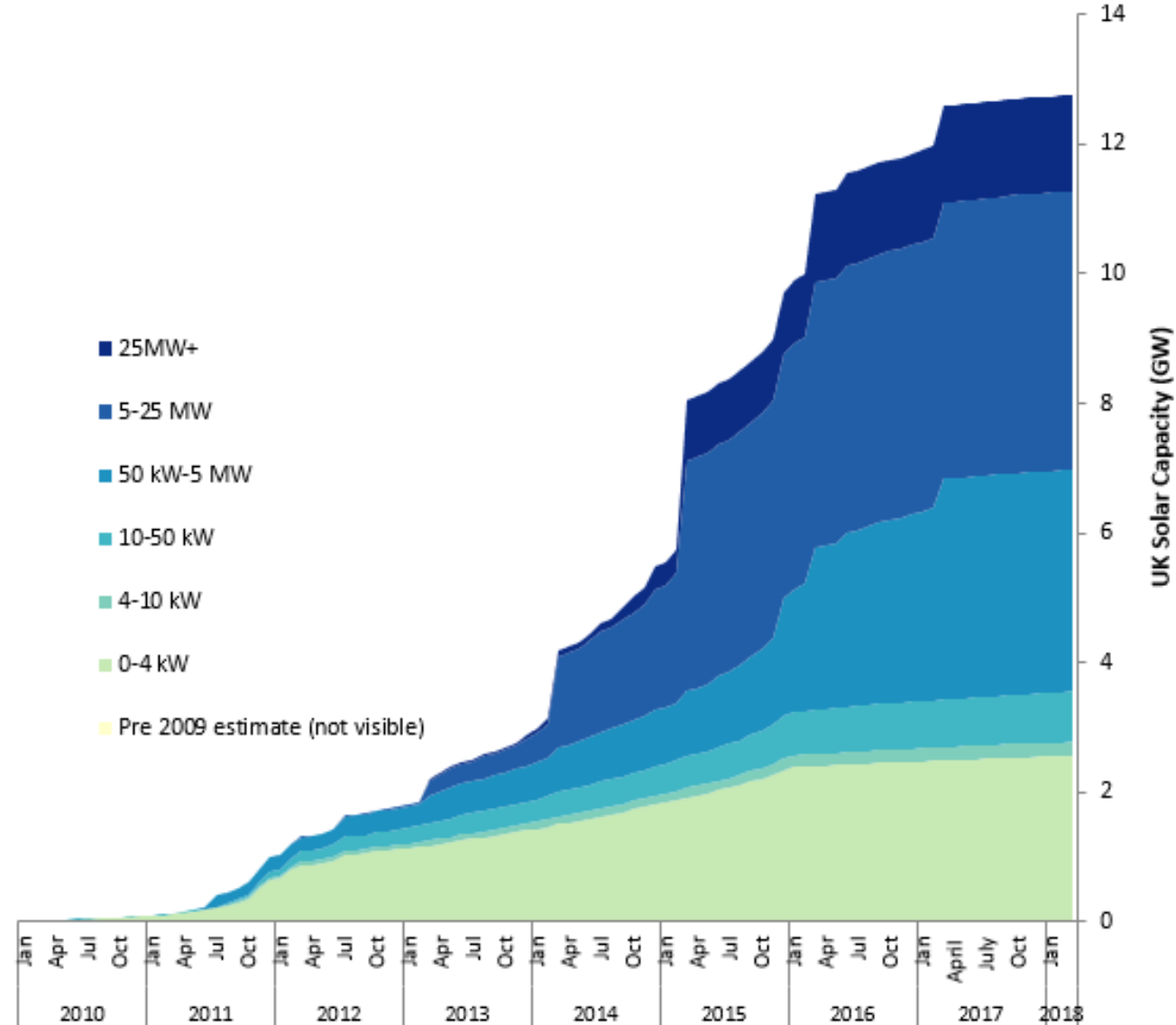
Coal exits the UK mix



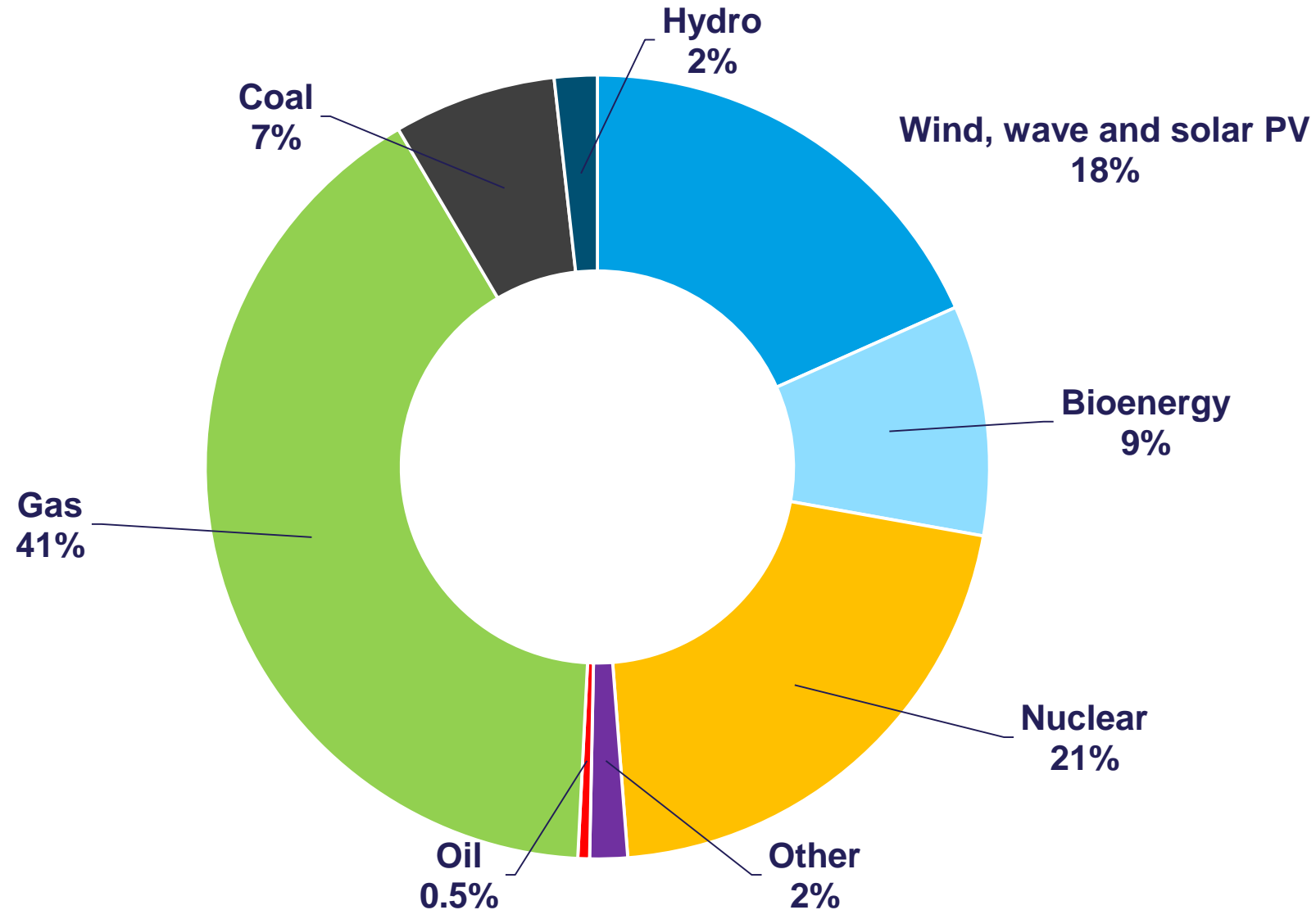
UK offshore wind leadership



UK solar deployment



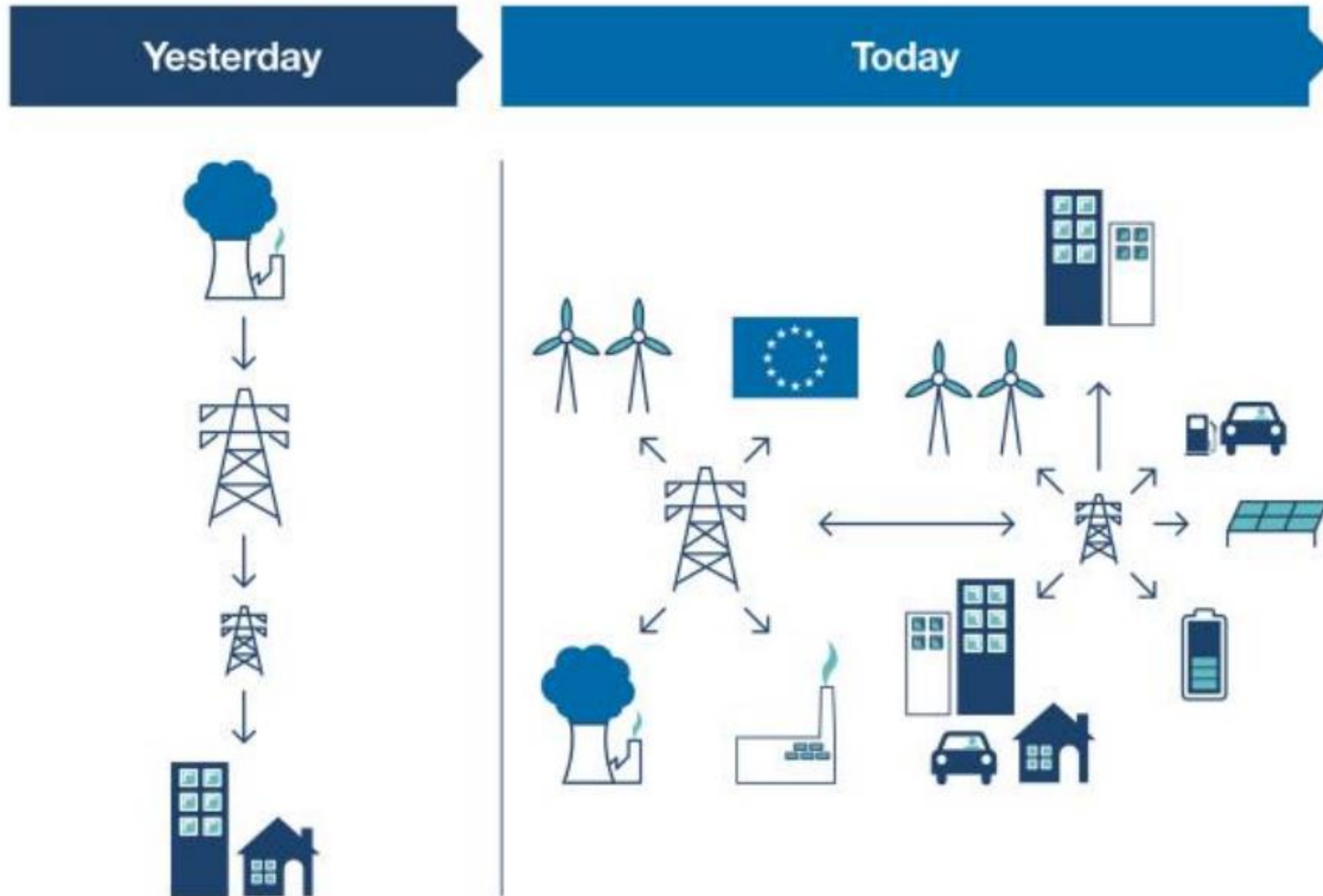
UK electricity mix 2017





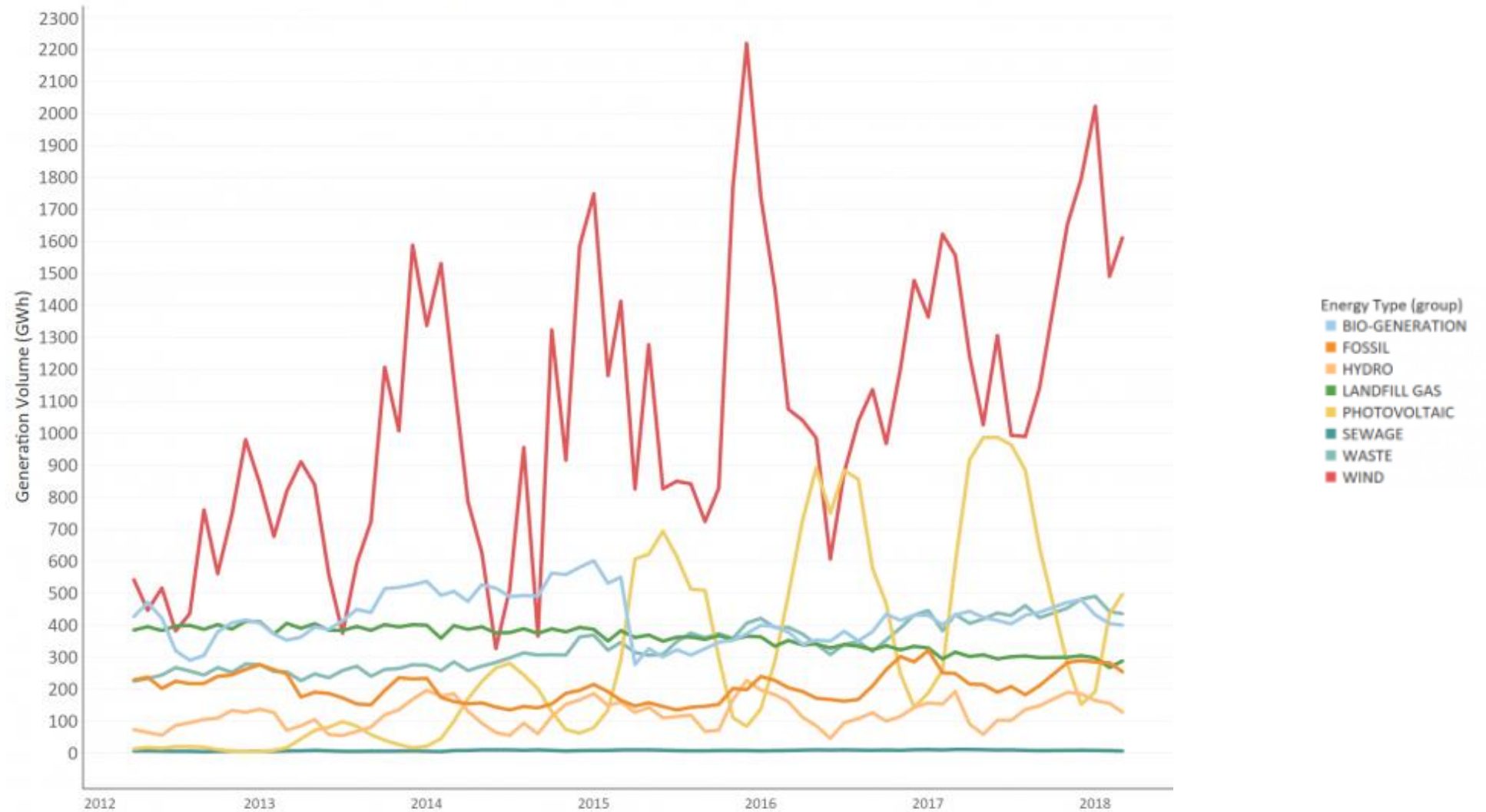
Decentralisation

Energy system change

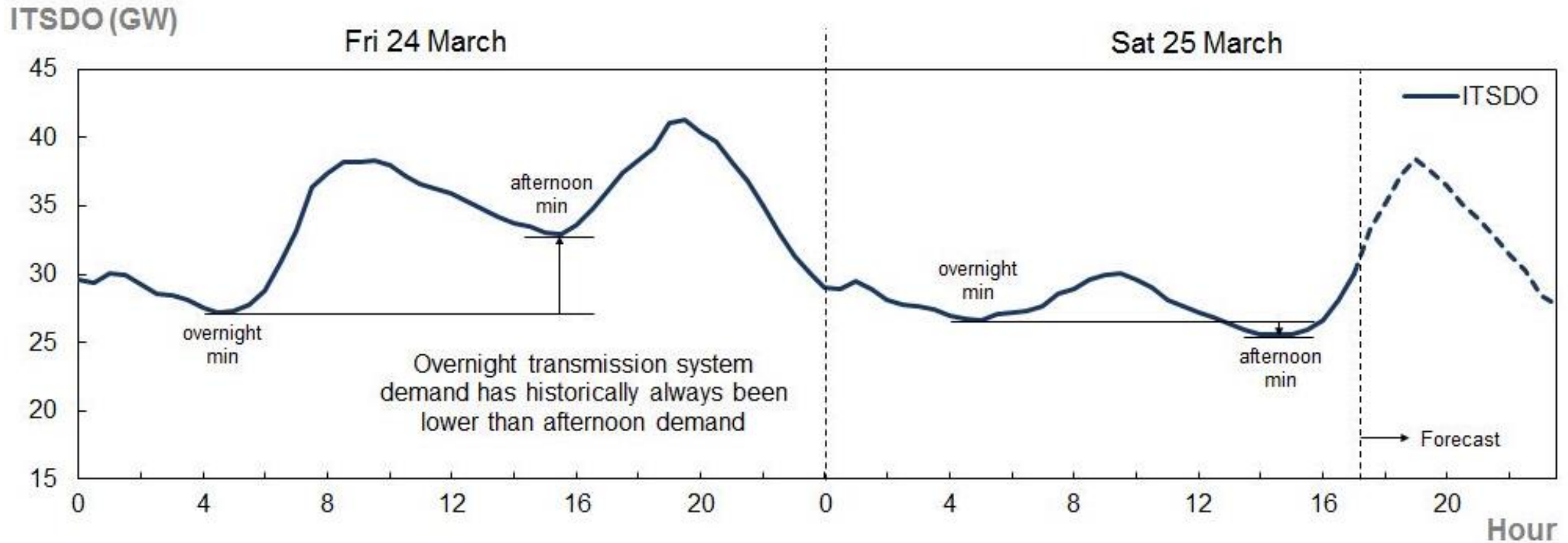


Growth in embedded power

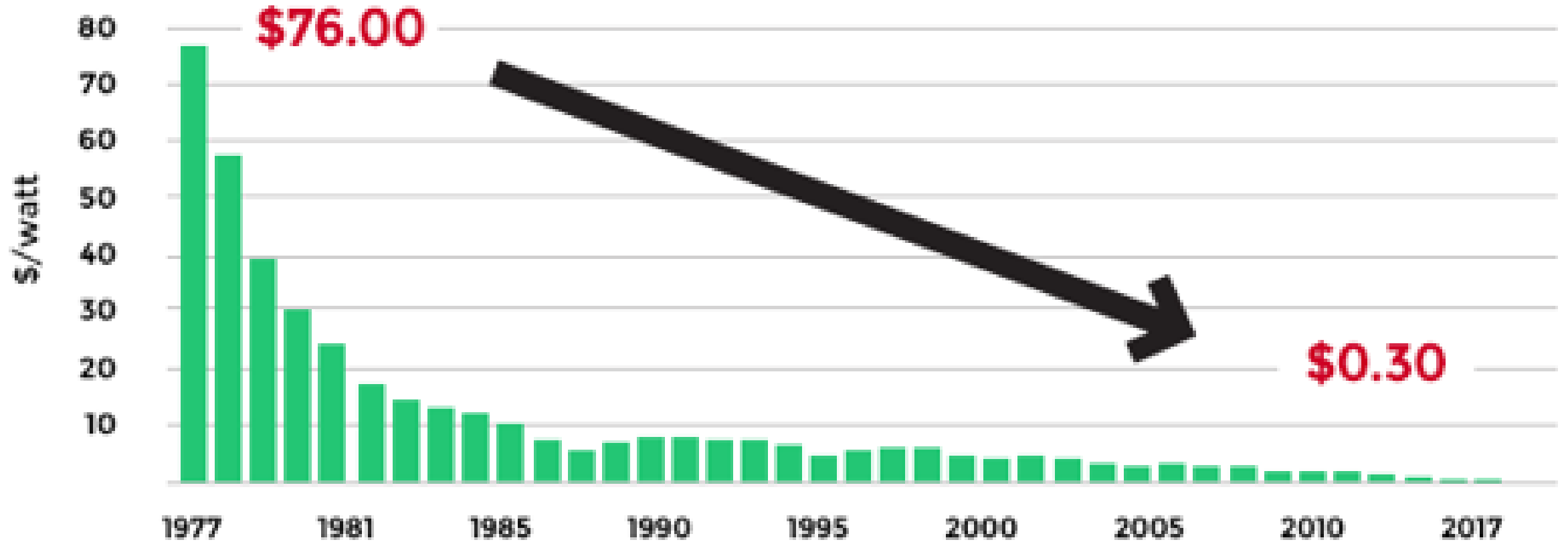
SVA-Registered Embedded Generation by Technology Type



25 March 2017



Solar cost reductions



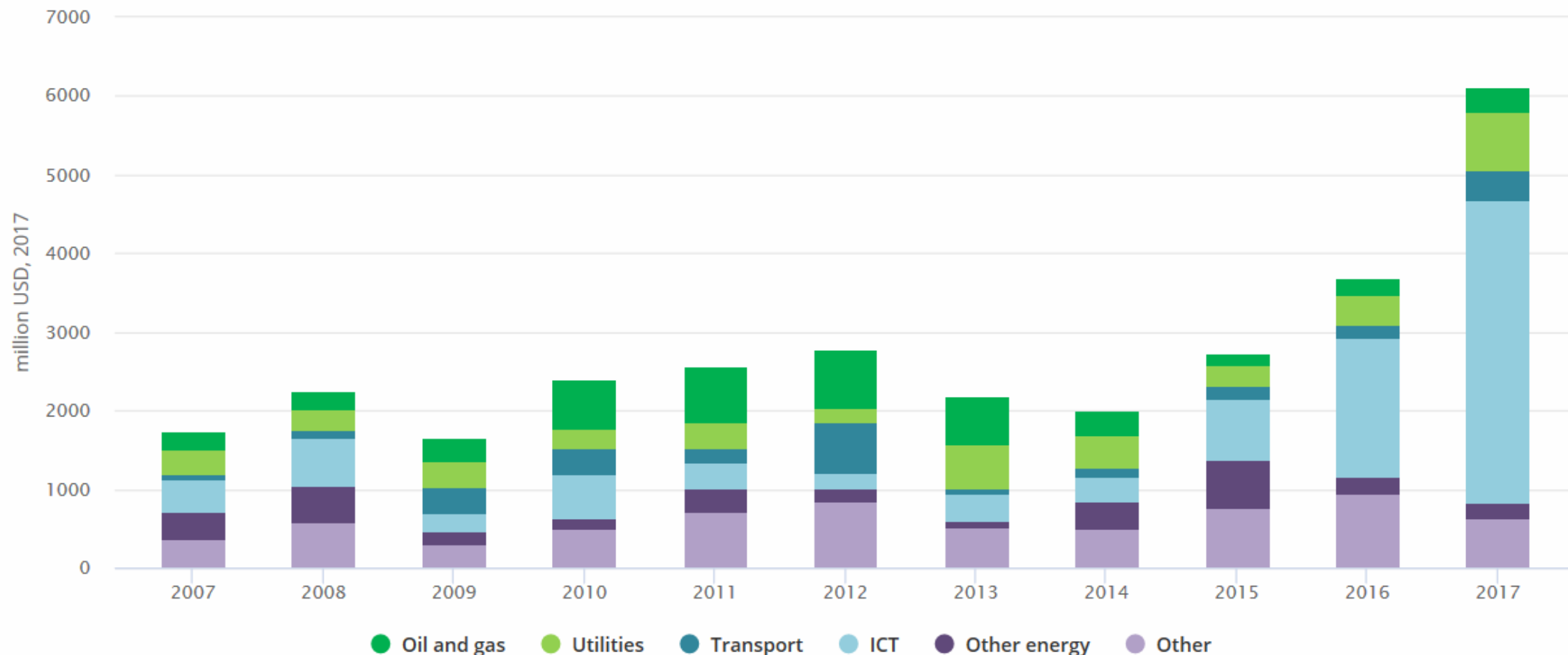


Digitalisation

ICT incursion into new energy



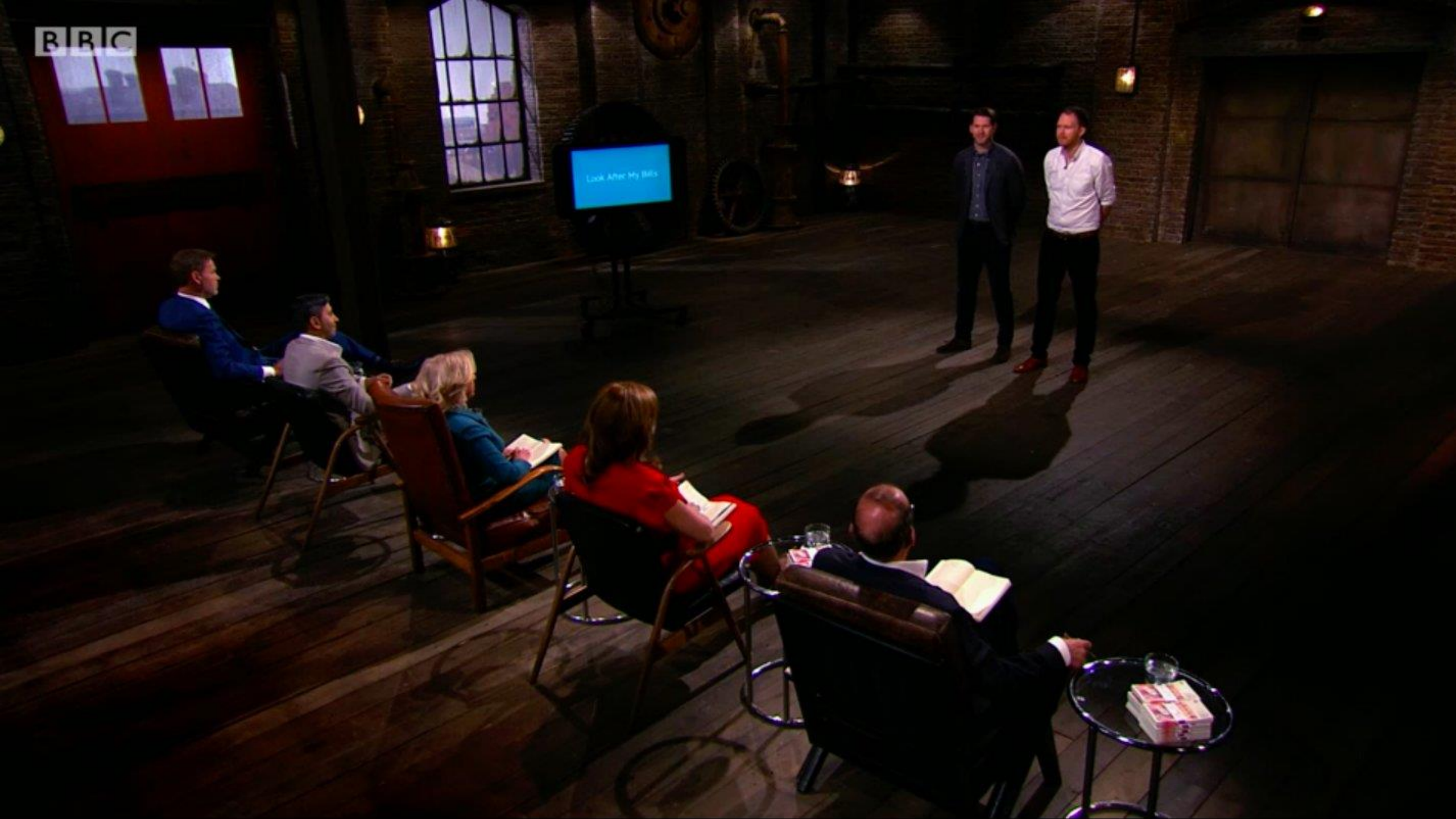
Corporate investments in new energy technology companies, by sector of investing company



Democratisation



Look After My Bills



Conclusion



Questions?