

Physics at Bath

Written by students,
for students



UNIVERSITY OF
BATH

Find out what it's **really** like to study physics at Bath from **the experts**, our physics students.



This brochure has been written with physics students. It's **based on questions they had before they started their course** covering everything from labs, what to do if you're struggling with maths, to making friends.

If you have any specific questions about living or studying here, please speak to staff and students at an Applicant Visit Day, or contact us directly – see back page for details.



Rachael Fernando,
BSc Physics with
Astrophysics with
placement



Annabel Kaye,
MPhys Physics with
placement & 6-month
research placement

Oli Harris,
MPhys Physics with
Astrophysics



Meet the experts



Sanju Shah,
BSc Physics with
placement



Euan Coyle,
BSc Physics with
Astrophysics with
placement

Settling in

Your first week at Bath will most likely be **Freshers' Week**. It's all about **finding your way around, meeting new people and getting used to a new routine.**



"I **love the campus** and it was one of the main reasons why I picked to come to Bath. It's small so within no time you will be recognising people as you walk down the Parade."

Annabel

"Freshers' week was one of the **best weeks of my life**, it was a whirlwind of new experiences and social events and I would do it a thousand times!"

Oli

"I had a really great time living on campus. All my lectures and problem classes were **really close by** and **it was easy to get into the city** if I wanted to do any shopping or have a night out with my flatmates."

Euan

"From second year everyone lives in the city, with many in Oldfield Park. So I've gone from living 10 minutes from friends on campus, to 10 minutes in Oldfield."

Oli

"The **activities during Freshers' week** were **amazing** as I really got to bond with my flat mates. We also had a couple of **introductory lectures** which I **found really useful** and meant I could make a few friends before going to my first real lecture!"

Sanju

In first year, **most students choose to live in university accommodation, either on campus or in the City.** See all accommodation options: go.bath.ac.uk/student-accommodation



Join a supportive community

"The Department is **really relaxed** and the **staff are friendly and approachable.**"

Rachael

"Everyone is assigned a **Personal Tutor** who you meet up with weekly in **smaller groups of 4/6**. We talk about both academic and non-academic topics and my Tutor looks over my lab reports before I submit them, which was really helpful for my first report as I had no clue what I was doing!"

Sanju

"I struggled quite badly academically in first year, and was signposted to **Student Services**. I was then diagnosed with ADHD and now have extra time during exams, advanced access to course materials, and weekly meetings with Student Services to make sure I'm staying on top of things. I've found everyone involved to be really **helpful and encouraging**, and I'm now doing really well!"

Rachael



"I was worried about being one of only a handful of female students however I was pleasantly surprised when I joined. I don't really notice it unless I'm thinking about it! There's also loads of female lecturers, lab technicians so there's **loads of positive female representation.**"

Sanju



Follow Network of Women
in Physics on Facebook
@NWPBath

"**Physics Square** in the Department is such a great **social space** because I mix with staff, PhD students and loads of people in different years. There's always a **friendly and inclusive vibe** and I've got to know some of the staff very well."

Oli

If you ever need a bit of **extra support** whether it's **money worries or mental health**, we've got a range of services to help you out:

go.bath.ac.uk/student-services



The step-up to university

"First year is definitely harder than school because you have to be a lot more independent. They **ease you into** it though, as the first few lectures of each unit are just bringing everyone up to the same level. I have loads of course mates I can ask to help as we're all doing the same units."

Sanju



"Lecturers hold **problem classes** regularly where they go over relevant past exam questions and other questions relating to what you studied that week."

Annabel



If you're ever **struggling with Maths**, MASH – the University's Mathematics Resources Centre can help. They run **daily drop-in sessions** where you can ask general questions or get help with specific maths problems.

go.bath.ac.uk/mash

"It definitely is a step up from school and you have to make sure you **keep on top of everything** and stay focussed, but within a few weeks you will be more than used to it."

Annabel

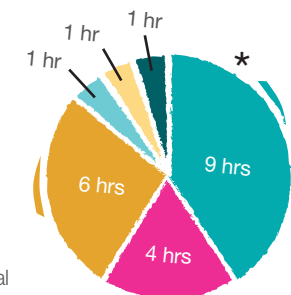
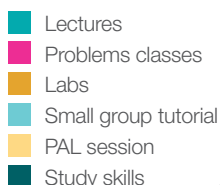
"In first year, the Department provides support through **Peer Mentors, Personal Tutors** and **tutor groups** and **Peer Assisted Learning (PAL) sessions**. As someone who **didn't study further maths at A Level**, I ended up using these resources for the majority of my first year. The jump to degree level physics was definitely **made less daunting when I started using the support provided to me.**"

Euan

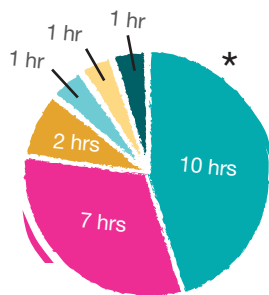
"The aspect I found the hardest to adjust to was the lectures. It's a completely **different style of teaching and learning** to what I was used to at school. The lecturers know this is all a big change though, and I found that they made an effort to make their lectures as fresher-friendly as possible."

Rachael

A typical week



Physics, Physics with
Astrophysics and Physics with
Theoretical Physics



Maths and Physics

"I have had a **great relationship** with the staff over both my years at Bath. They are all very passionate and very clever and if you show an interest, they love to expand on their work and chat for hours."

Oli

"The first year timetable wasn't as awful as I expected! It was definitely more intense than some of my friends on non-STEM degrees, but I had **plenty of evenings free** and didn't start till 11 or even 12 on some days, so I got a nice lie in!"

Sanju

"There are around 20 contact hours per week in first year. I didn't find this to be too much at all – it's less than typical school hours, though it is more intensive. The main consideration is time-management. But if you plan your time well there's definitely time to join sports and societies, or even work part-time."

Rachael



"All the lecturers seem very **enthusiastic** about the modules they teach, and you have new lecturers for each half of the module, so you get to learn through different teaching styles. Lecturers have an **open-door policy** and hold office hours where you can go and speak to them if you need any help with anything."

Annabel

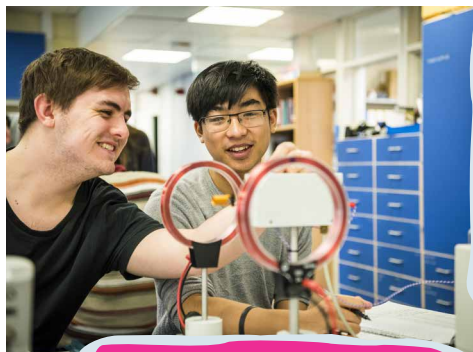
Staff in the Department carry out their own research in areas ranging from theoretical astrophysics to quantum technology.

Find out more about their research:
bath.ac.uk/physics/research



*This pie chart is intended to give you an idea of a potential first year timetable breakdown and does not include time spent on interdependent study. Your actual timetable may vary and will depend on the precise course.

Learning in the labs



"The labs have all sorts of equipment that you just don't have access to in school. I enjoyed the **X-Ray labs** where we tested the laws of interference of electromagnetic radiation. The labs are quite open so people doing different experiments are all sat next to each other, which strengthens the community feel."

Oli

"I really disliked practical work at A Level and had always felt out of my depth with it. Lab work at uni completely changed this opinion, and I actually found myself understanding more about topics as I did experiments around them."

Rachael



Labs are split into experimental and computational labs

"**Computer labs** are a really good way of building up **coding skills**. We focus on a new language each semester and the entire thing is assessed through coursework. This is so useful as it means you end up talking to loads of people in your year trying to figure out the answers, and often people you've never talked to before!"

Sanju

"During labs, PhD students are always available to help you out and guide you if you're not sure what's happening."

Sanju

"Labs were definitely one of my favourite parts of first year. Being able to observe new physical phenomena, as well as analyse the data is a much more interesting way to learn than taking notes in lectures. One of my favourite experiments involved **measuring the speed of light** using a metal ruler."

Euan



Go on a placement year

Going on a placement gives you the chance to **try out different areas of work** and could **improve your employability**. The majority of placements are paid and you may even have the opportunity to go abroad!

"A key reason I chose Bath was the placement scheme that they provide."

Annabel



We have a **dedicated Placements Team** who will help you before and during your placement year.

go.bath.ac.uk/science-placements



Sajidah Ahmed
on placement at
the Atomic Energy
Authority

"I chose to do a placement because I have no clue what I want to do as a job, so thought I could experiment a bit during my degree, rather than taking a risk with a job I might not like after graduating."

Sanju

"There are loads of great events with different **employers coming in to network** with students. Last month I went to a free dinner at the Ivy restaurant to network with a bank!"

Annabel



Rose Yemelyanova
on placement at the
Science and Technology
Facilities Council

"You definitely don't just have to work in a lab for a physics placement. I'm going on a software engineering placement in London, so there's loads of opportunities available in different fields, some even in different countries!"

Sanju



Even if you haven't chosen to do a placement you can **easily switch onto the course** when you get here.

Life outside the lab

Volunteer • Join a society • Try a sport

There's more to being a student than studying - whether you're interested in baking, sports or computer games you'll definitely be able to find something you enjoy.

"This year PhySoc has hosted pub lectures, balls, quizzes and nights out!"

Oli

"The Physics Society, **PhySoc**, has been a lot of fun and allowed me to get to know my course mates and have a great time with them. Given that you're going to be spending a lot of time together in lectures every week, it's worth trying to get to know them."

Euan



There are over **160** groups on offer, from societies to volunteering:
thesubath.com/groups



"There are SO many groups available for you to join in your free time. There's a club for just about every sport you could think of, many of them **offering a range of levels**, from highly competitive to recreational. There are loads of societies as well for a variety of different hobbies and interests."

Rachael

Did you know?

We have around **50** sports clubs and offer competitive and recreational options:
thesubath.com/sport



Bath's nightlife venues include a mix of **underground clubs and bars**, **cosy pubs**, **comedy clubs** and **countless restaurants** so there's something for everyone.

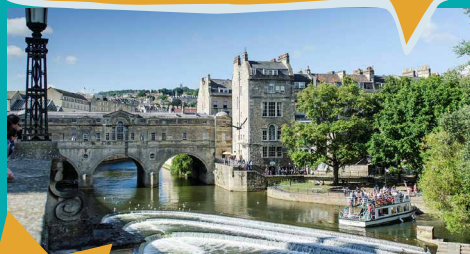
"The SU on campus means you have the opportunity to **go out with friends** and still be back at a reasonable enough time to attend a 9am lecture the next morning! For a big night, like Halloween or the end of semester, Bristol is just a short, cheap train journey away!"

Sanju



"Bath as a **city is incredible**. There are so many interesting spots in town with all sorts of different atmospheres. Bath's got so much history, and the trademark sand-coloured bath stone buildings make it so pretty. What really sets it apart for me is all the lovely little independent shops, bars, cafes and restaurants."

Rachael



2nd

Bath has been ranked as the **2nd safest University City** in the UK in the most recent THE Student Experience Survey (2018)

"The night life in Bath is good - there are **so many bars and pubs** that I still haven't gotten around all of them! There are also many social events that don't involve drinking run by plenty of societies and sports."

Oli



We have our own **on-campus bar and nightclub**.

"The **SU** hosts a **variety of different events every week**, including two club nights, a cocktail night, a pub quiz and the famed Happy Hour on a Friday (which actually goes on for not just one but four very happy hours), as well as **non-alcoholic events**, so there's something for everyone."

Rachael



Buses run between campus and town 24/7 to make sure you get home safely.



Ways you can find out more



Read our student blogs: blogs.bath.ac.uk/students

Chat to a current student:

In early 2022, all offer holders will have the opportunity to **ask a student** any questions about living and studying at Bath. You don't need to do anything, simply look out for a call or email from a current student sometime in early 2022.

Join us on social media:



www.facebook.com/uniofbath/



www.twitter.com/uniofbath



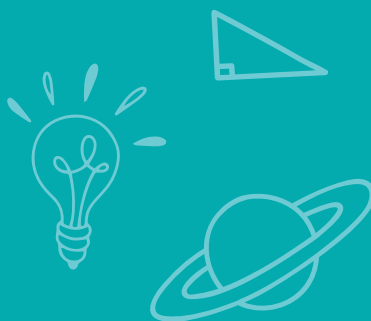
www.instagram.com/uniofbath/

Contact the Department

physicsenquiries@bath.ac.uk

01225 386965

go.bath.ac.uk/phys



UNIVERSITY OF
BATH

We may make changes to our courses in response to, for example, feedback from students, developments in the field of studies, the requirements of accrediting bodies, or any unforeseen or unavoidable circumstances.

Please check our online course pages to ensure you have the most up-to-date information. Find out more about this and other important University terms and conditions go.bath.ac.uk/ugp-important-terms