

Better Yourself at Bath

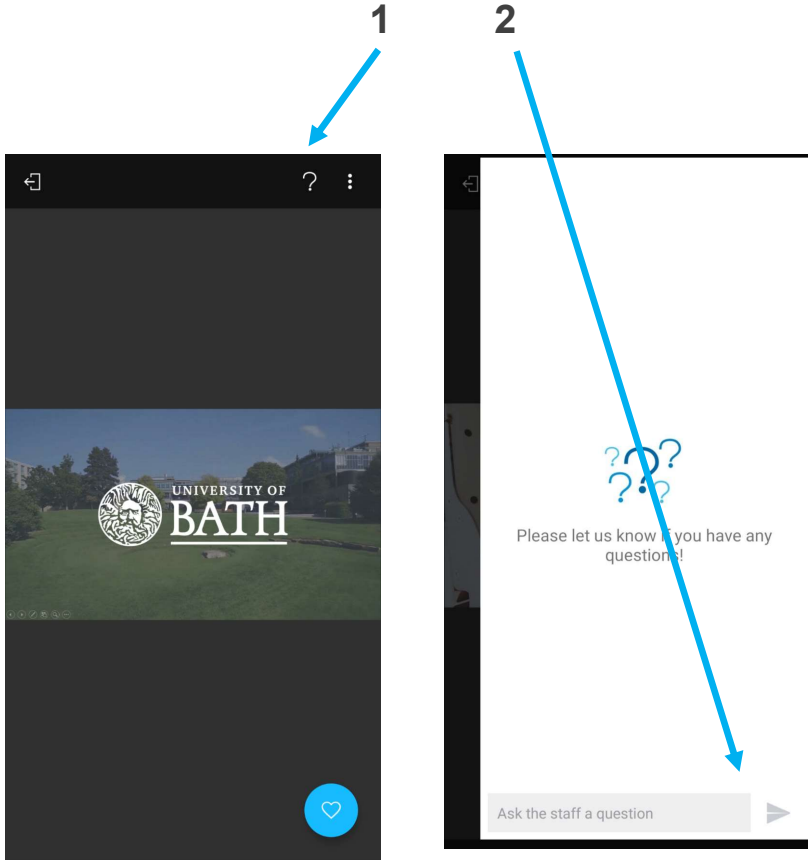
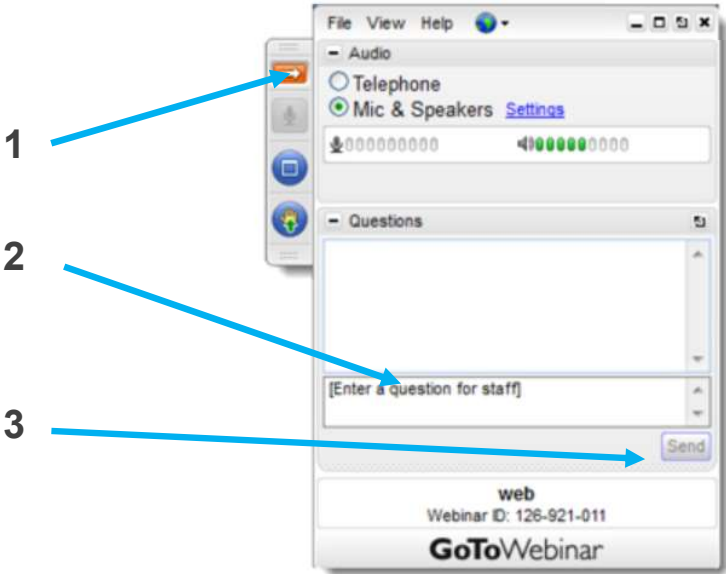
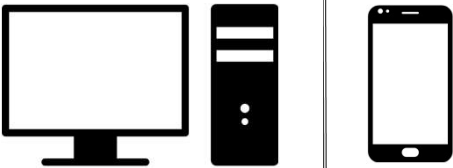
James O'Grady & Farman Kaveh

Postgraduate Student Recruitment Managers
PGT Recruitment & Admissions Office

Medha Arora

MSc Data Science with placement year,
Data Science & AI Intern, Bosch (Germany)

How to ask a question



Welcome!
where in the
world are you?



Why Bath?

Why Bath?

Great Location...

- In the **Cotswolds**
- 83 minutes to **London** by train
- 12 minutes to **Bristol** by train
- 60 minutes to **Cardiff** by train
- 40 minutes to **Stonehenge** by car
- 2 hours to **Heathrow Airport** by car



A UNESCO World Heritage City

Why Bath?

A Top Ten UK University overall in *all three latest* national rankings



6th

9th

9th



Why Bath?

Gold
Teaching Excellence
Framework



4th
in the UK for
Student Experience

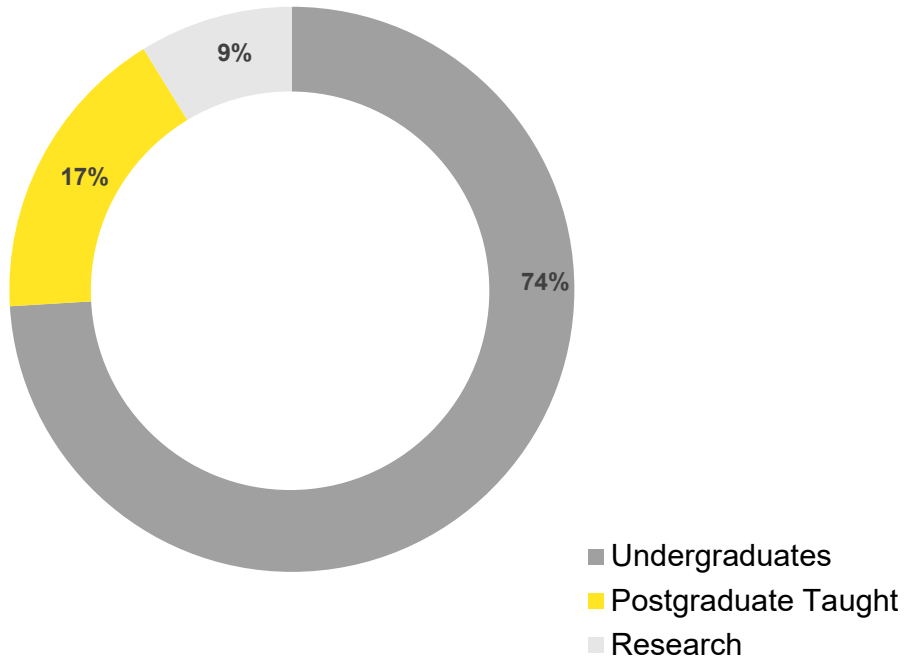


5th
for graduate
prospects 2021



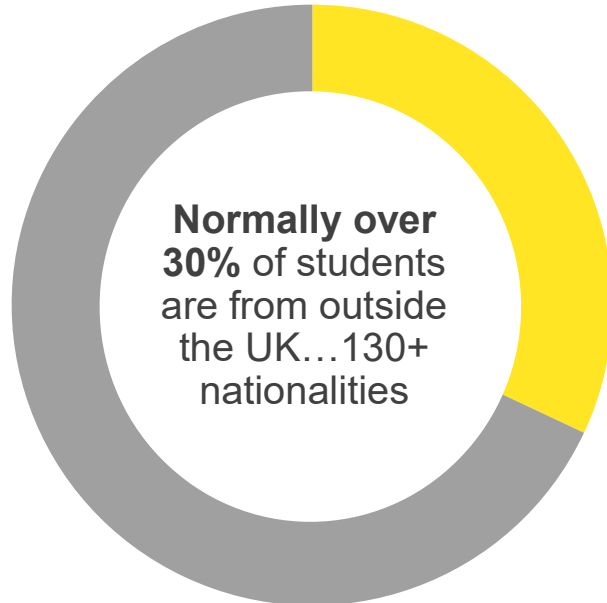
Why Bath?

About 18,000 students...



Why Bath?

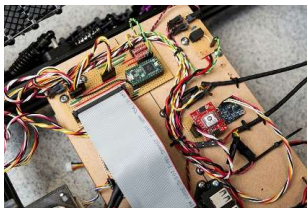
...and a vibrant international community!



Faculties & Schools

Faculty of Engineering & Design

- Architecture & Civil Engineering
- Chemical Engineering
- Electronic & Electrical Engineering
- Mechanical Engineering



Faculty of Humanities & Social Sciences

- Economics
- Education
- Health
- Politics, Languages & International Studies
- Psychology
- Social & Policy Sciences



School of Management

- General
- Finance
- Specialised



Faculty of Science

- Biology & Biochemistry
- Chemistry
- Computer Science
- Mathematical Sciences
- Natural Sciences
- Pharmacy and Pharmacology
- Physics



Build Yourself Better



Poll: Why do you want to study a UK master's?



Connection to industry is **built into our DNA**



'The objects of the University shall be to advance learning and knowledge by teaching and research... **in close association with industry and commerce**'.

University of Bath Charter, 1966

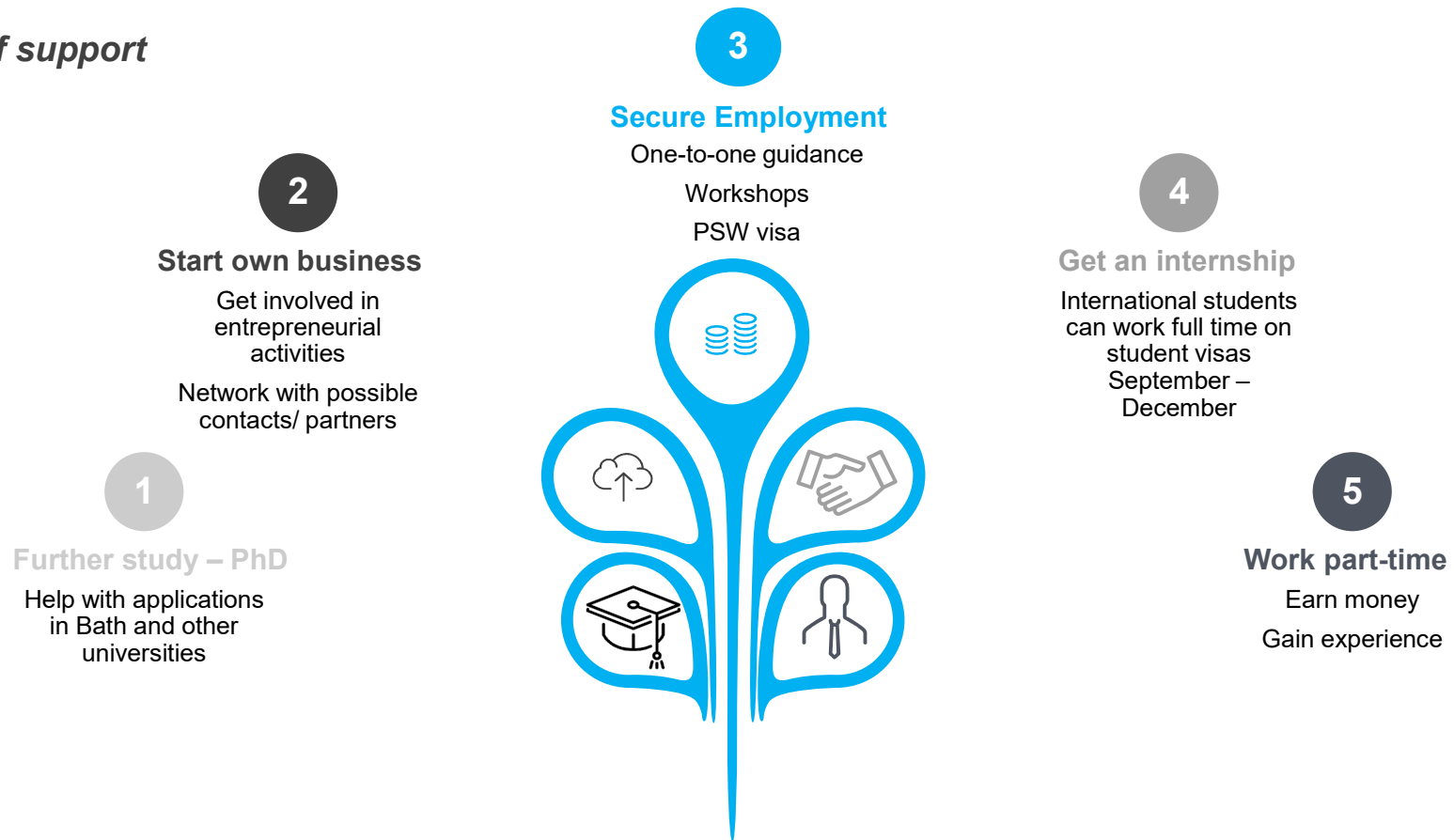
Build Yourself Better: Exposure to Industry

- Links with more than **3,000** employers
- **International connections** give students global opportunities
- **Employment skills** embedded into academic programmes
- Some PG programmes provide **work placement** opportunities supported by specialist teams



Build Yourself Better: the Careers Service

A lifetime of support



Build Yourself Better: Develop You

Academic knowledge, interest and motivation

Bath students are academically excellent with the latest insights in their field

Gain Practical experience

This could be:

- Placement
- Part-time job
- Project / portfolio
- Volunteering



Be reflective: enhance your skills and ability

- Analytical thinking & problem solving
- Creativity
- Team-work and leadership
- Interpersonal skills and emotional intelligence
- Communication, negotiation skills

Shape your Brand

- Careers support
- Employer Exhibitions
- Networking
- Alumni engagement

Build Better: at Bath



One of the key strengths I've found for Bath students is that they're **well-rounded**: they're not just academic, **they know the real world**, which is really important.

Bhavik Davda, Head of CRM & Insight, Superdrug



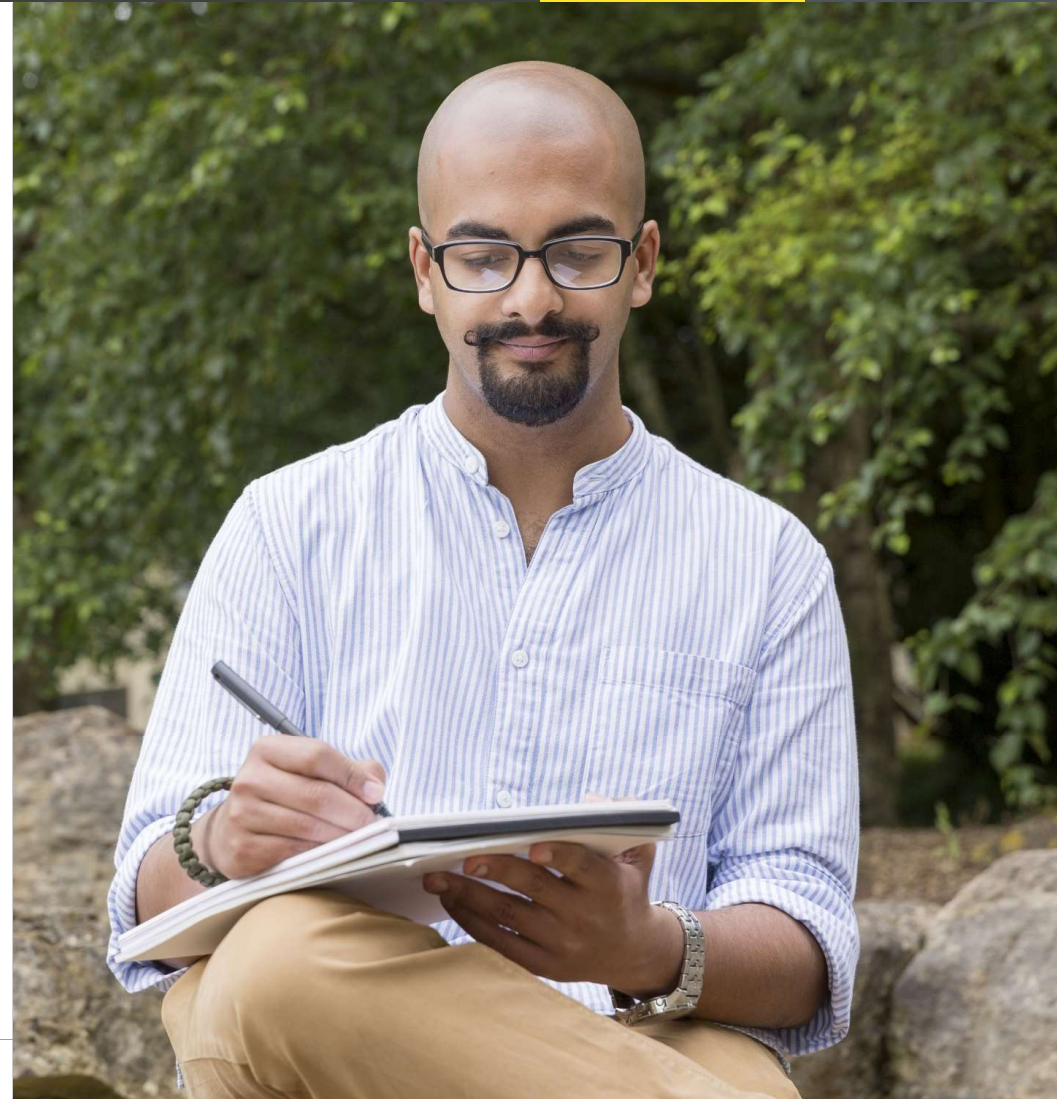
English, Visas, Scholarships and the 'Bath Blend'

Meeting your English language condition

We accept a number of English language qualifications to allow you to meet your English condition.

We are now also accepting a number of alternative qualifications, including some online and country-specific qualifications. Please check for details.

<https://www.bath.ac.uk/corporate-information/postgraduate-english-language-requirements/>



Pre-sessional Programmes

If you cannot meet the English language conditions, you may have the opportunity to take a 5- or 10- week **pre-sessional programme**. 2021 will be fully online, or blended, dependent on the global situation.

Current IELTS score	Recommended course
No more than 0.5 of a band away from required IELTS scores (overall and elements)	5-week pre-sessional English (full-time) programme
No more than 1.0 of a band away from required IELTS scores (overall and elements)	10-week pre-sessional English (full-time) programme

Popular even with students that have met conditions – due to opportunities to meet students and improve academic English.

2021 Pre-sessional Course Dates:

10-week: 12th July – 17th September
5-week: 12th August – 17th September

To apply for a pre-sessional course contact the relevant admissions team:

Postgraduate (excluding School of Management):

pgtadmissions@bath.ac.uk

Postgraduate (School of Management): msc-mn@bath.ac.uk

Visas

Points based system (PBS)

- All non-EU nationals will require a Tier 4 visa
- To apply for a visa you must have **firmly accepted an unconditional offer of admission**
- We will issue a **Confirmation of Acceptance of Studies (CAS)** following a pre-CAS check
- You **must** attend the university whose CAS you have used to apply for the visa
- CAS is valid for a **maximum of 6 months** and may be used up to 3 months before you commence your studies

NEW: Post study work visa

A post-graduation route for Master's students

All international graduates could qualify for a two-year period to work in the UK with the introduction of a new 'graduate route' to be launched in the summer of 2021.

A new visa application will need to be made but the process will be simple. No sponsor required. We will contact you with further information about visas and immigration.

You can also contact the Student Immigration Service:
student-immigration-advice@bath.ac.uk

PGT Scholarships

Deans Award for Academic Excellence Scholarship

24 faculty
Scholarships
available, each worth
£5,000

Global Leaders Scholarship

45 faculty
Scholarships
available, each worth
£5,000

The MSc Scholarship

30 School of
Management
Scholarships
available, each worth
£5,000

MBA Scholarship

Awards range from
£3,000, up to 30% of
tuition fee. Automatic
consideration.

Application windows (all scholarships except MBA):

Apply by **18 January** for a decision by **12 February**

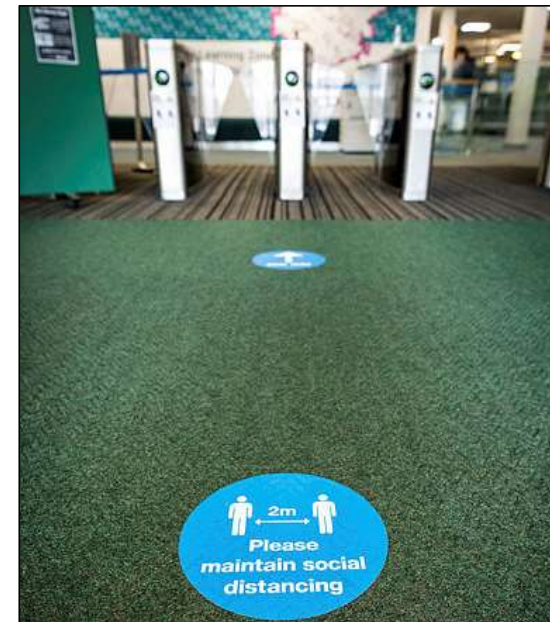
Apply by **26 April** for a decision by **28 May** (21 May for School of Management)

Apply by **16 July** for a decision by **16 August** (9 August for School of Management)

‘The Bath Blend’: The New Normal

For 2020, the University of Bath...

- has offered campus-based learning, enabling students to benefit from the skills, friendship opportunities and experiences that come with a University of Bath education
- has provided flexibility and choice if students couldn't come to Bath at the start of term, or preferred to start their course (for Covid-related reasons) from another location, by providing innovative, high quality learning and teaching remotely
- has gone to great lengths to provide as many support and other extra-curricular services as possible during this time, including greater flexibility and support during arrival/quarantine times and on student deferrals
- Beyond 2020...





Student life



Accommodation

- Campus, city-based and private-sector options

University accommodation rent includes:

- High-speed Wi-Fi
- 24-hour security
- All utility bills
- Core possessions insurance

Not offered on a first come first served basis*

*with the exception of family/couples accommodation



Polden (PG) Campus accommodation (example room)



Postgraduate Accommodation

We guarantee accommodation to all new **overseas fee-paying** postgraduate students who have:

- Accepted their place at the University
- Applied by the accommodation deadline

Application window: Opens 11th March 2021.
Deadline for guaranteed in June.
Applications close 1st July; opening again
from 19th August on non-guaranteed basis.

Contract duration: 51 weeks

Student Welfare Support

- Medical and dental centre
- Money, disability, immigration and legal advice
- Counselling and faith support
- Student Services Centre

Students' Union

- SU Officers represent student body
- Dedicated Postgraduate Officer
- JobLink helps students to find part-time jobs, numerous volunteering opportunities also available



Societies...more than 100, including...

Choral and Orchestral
Society – ChaOS

Salsa

Film

Meditation

Chamber Choir

Debating

BUYS – Yoga Society

Vegetarian

Dance

People & Planet

Harry Potter Society

Women in Business

Fine Art

Baking Appreciation

International Sushi

Women in Science

Photosoc

BUCAS – Curry
Appreciation Society

SocieTEA

University Radio Bath

Plus...

- 15 individual departmental societies
- Over 30 country/region/religion-specific societies

www.su.bath.ac.uk/socs/

Sports Clubs...around 50, including...

American Football

Cycling

Judo

Rugby

Archery

Dodgeball

Kickboxing

Sailing

Athletics

Fencing

Lacrosse

Snowsports

Badminton

Cheerleading

Latin & Ballroom

Squash

Basketball

Golf

Motorsports

Surf

Cheerleading

Gymnastics

Netball

Swimming

Cricket

Hockey

Rowing

Volleyball

bath.com/sport/



**SPORTS UNIVERSITY
OF THE YEAR 2018**
The Times and The Sunday Times*

*Good University Guide 2018



Life in Bath: Arts

The Edge, a £10.5m Centre for the Arts

Facilities include;

- 7 music practice rooms
- 3 dance studios
- A theatre
- 3 visual art galleries



Our City

Second safest university city in England

(Complete University Guide)

Beautiful countryside on your doorstep



**Famous for its natural
thermal waters**



Connect further...

Postgraduate Virtual Open Day

#BetteratBath

2020

4 November

All events take place 11am–3pm (UK time)

2021

3 February

24 March

9 June

Register now

go.bath.ac.uk/pgt-open-day

Master's Study Live Chat

Weekly chat designed for prospective master's students

Wednesdays from 11:00-13:00 (GMT)

<https://www.bath.ac.uk/events/masters-study-live-chat/>





Any questions?

Join now for a live chat with students & staff!



<https://uniofbath.pubble.io/app/event/83354/>