

## UGAR 25-26.1 Assessment regulations – processing flowcharts

### How to use the UGAR regulation flowcharts

The flowcharts on the following pages are designed to assist with decision making for undergraduate students under the UGAR regulations. These flowcharts do not replace the regulations – they are a processing aid.

The table below is designed to help you navigate which flowchart to use. There are 4 groups of flowcharts:

- 1) Non-final stage decision making for stand alone courses.
- 2) Non-final stage decision making for coexistent masters course.
- 3) Final stage decision making.
- 4) Designated Alternative Course (DAC) decision making.

**Stand alone courses:** These can be bachelors or undergraduate masters level courses. They do not have higher progression stage average requirements. They may or may not have a Designated Alternative course (DAC).

**Coexistent Masters courses:** These are undergraduate masters courses. All coexistent masters have Designated Alternative Course (DAC). They have stage average requirements that are higher than the 40% standard requirement for stage1 and stage 2 of the course. IF a student does not meet the conditions for progression on a coexistent masters course then the Board of Examiners for Courses (BEC) should consider whether a transfer to the DAC is possible.

If you have questions about UGAR decision making or would like advice on student cases please let us know at [SREO-SAMIS@bath.ac.uk](mailto:SREO-SAMIS@bath.ac.uk) and [academic-standards@bath.ac.uk](mailto:academic-standards@bath.ac.uk)

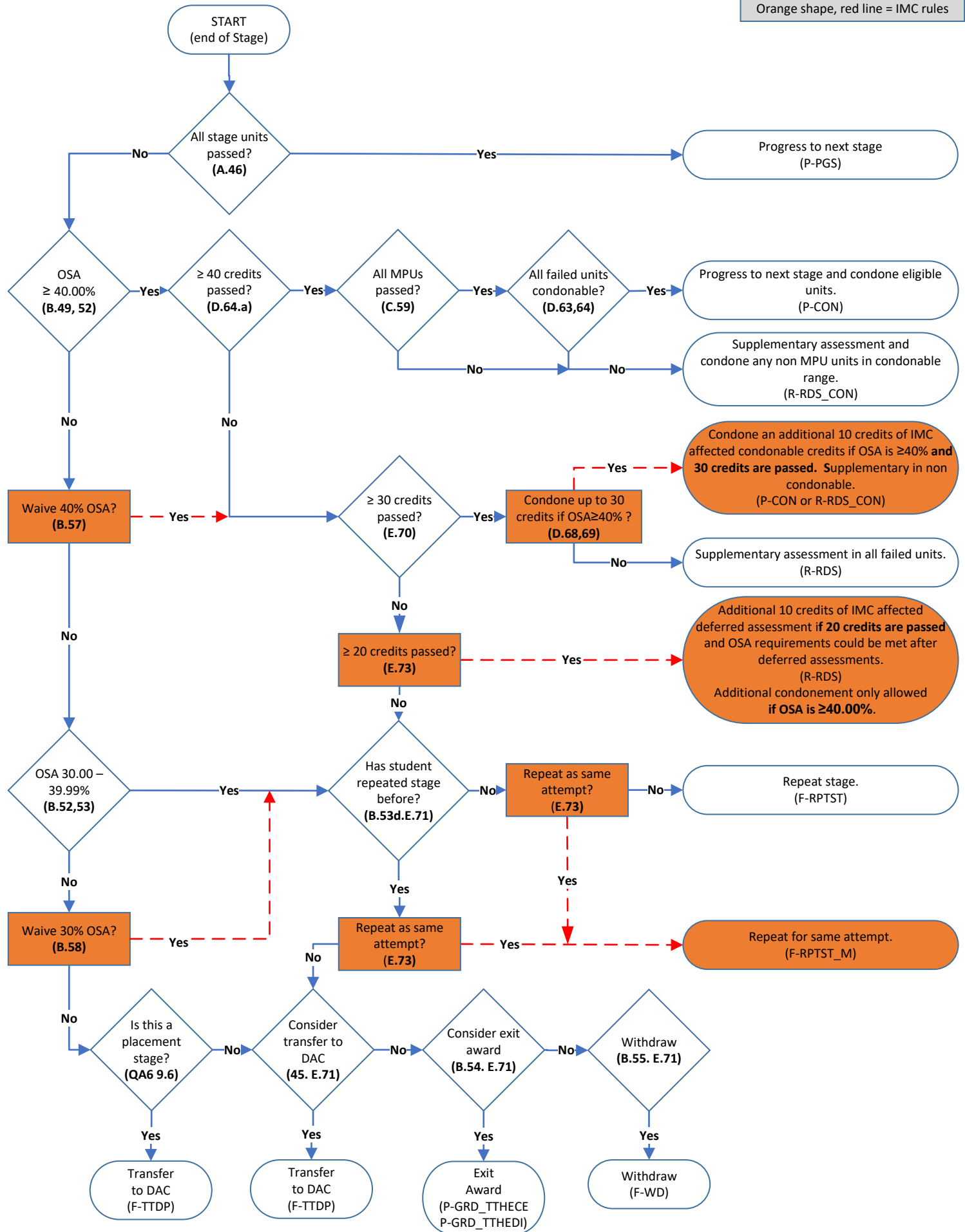
**Table to explain UGAR flowcharts**

Course type/stage	Main assessment	After supplementary assessment
<b>Non final year/stage</b>		
Standalone courses	Flowchart 1: Continuing (non-final) stage – Main assessment	Flowchart 6: Continuing (non-final) stage – Supplementary assessment
Coexistent master courses	Flowchart 2: Continuing (non-final) stage – Co-existent undergraduate Master – Main assessment	Flowchart 7: Continuing (non-final) stage – Co-existent undergraduate Master – Supplementary assessment
<b>Final year/stage</b>		
Final year/stage of all standalone and coexistent master courses	Flowchart 3: Final stage – Main assessment	Flowchart 8: Final stage – Supplementary assessment
<b>DAC consideration</b>		
If DAC consideration is needed, use the current stage and determine if that stage same stage is a continuing or final stage of the DAC course. Go to the corresponding flowchart.	Flowchart 4: DAC is continuing (non-final) stage – Main assessment  OR  Flowchart 5: DAC is final stage – Main assessment	Flowchart 9: DAC is a continuing (non-final) stage – Supplementary assessment  OR  Flowchart 10: DAC is a final stage – Supplementary assessment

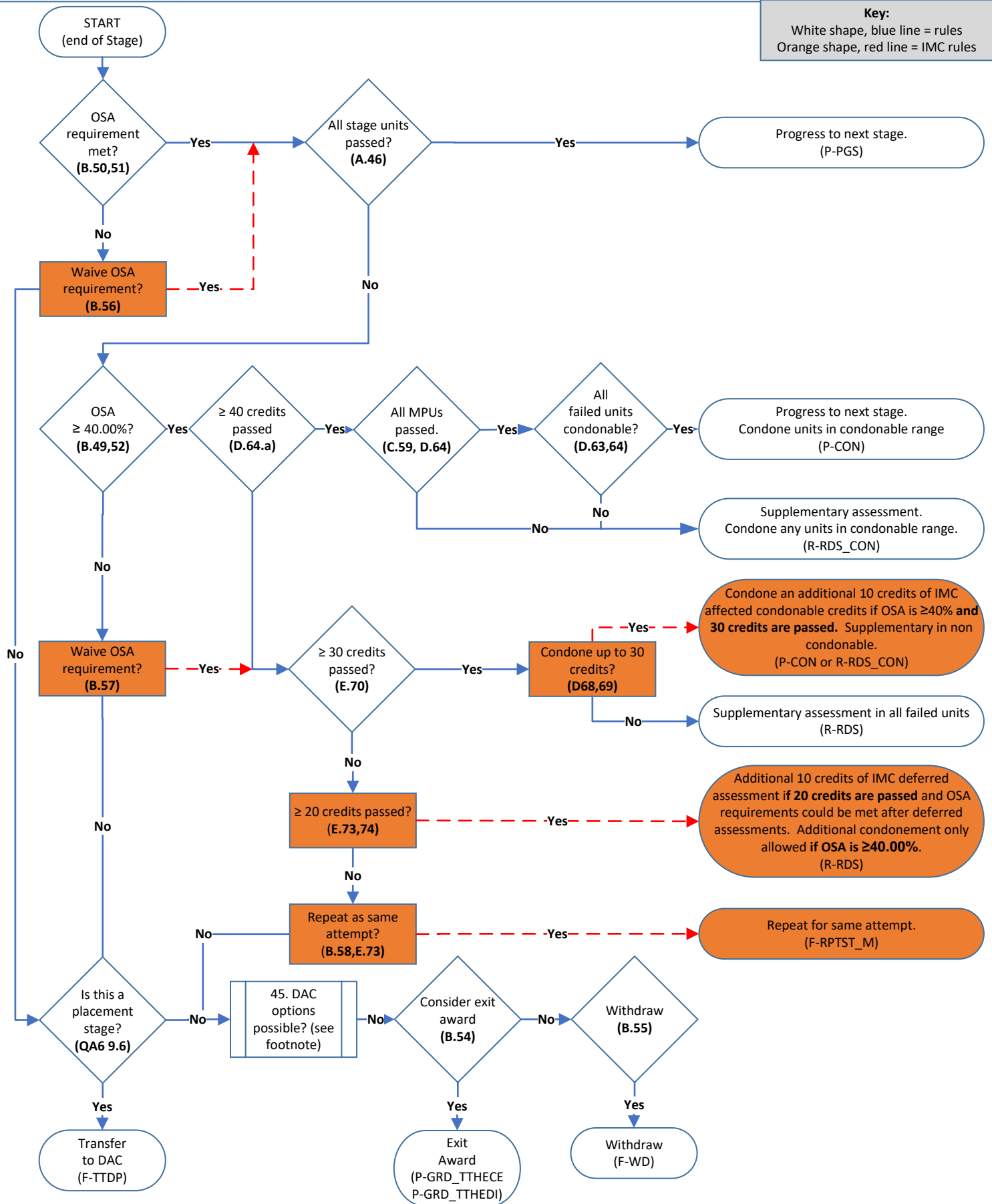
Flowchart 1:  
Continuing (non final) stage – Main assessment

**Key:**  
White shape, blue line = rules  
Orange shape, red line = IMC rules

**Key:**  
White shape, blue line = rules  
Orange shape, red line = IMC rules



## Flowchart 2: Continuing (non final) stage – Co-existent undergraduate Masters – Main assessment



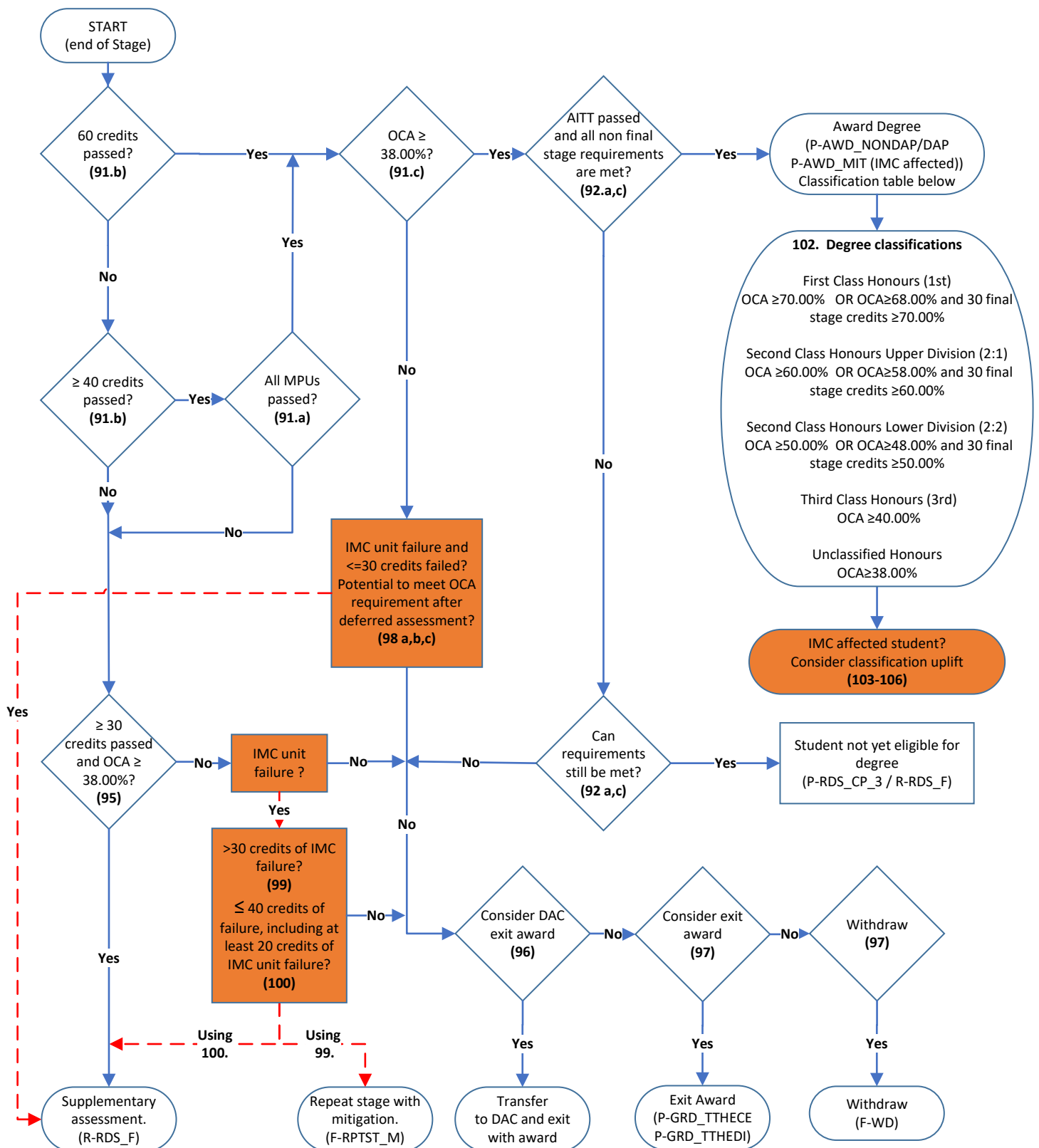
### DAC options possible?

The course specification will state if there is a DAC for the course stage. If there is a DAC for this course stage then use the DAC flowchart which matches the **corresponding STAGE** for the DAC course (e.g. Stage 3 = Stage 3):

- \* Flowchart 4 if DAC is a continuing (non final) stage (main assessment)
- \* Flowchart 5 if DAC is a final stage (main assessment)
- \* Flowchart 9 if DAC is a continuing (non final) stage (supplementary assessment)
- \* Flowchart 10 if DAC is a final stage (supplementary assessment)

## Flowchart 3: Final stage – Main assessment

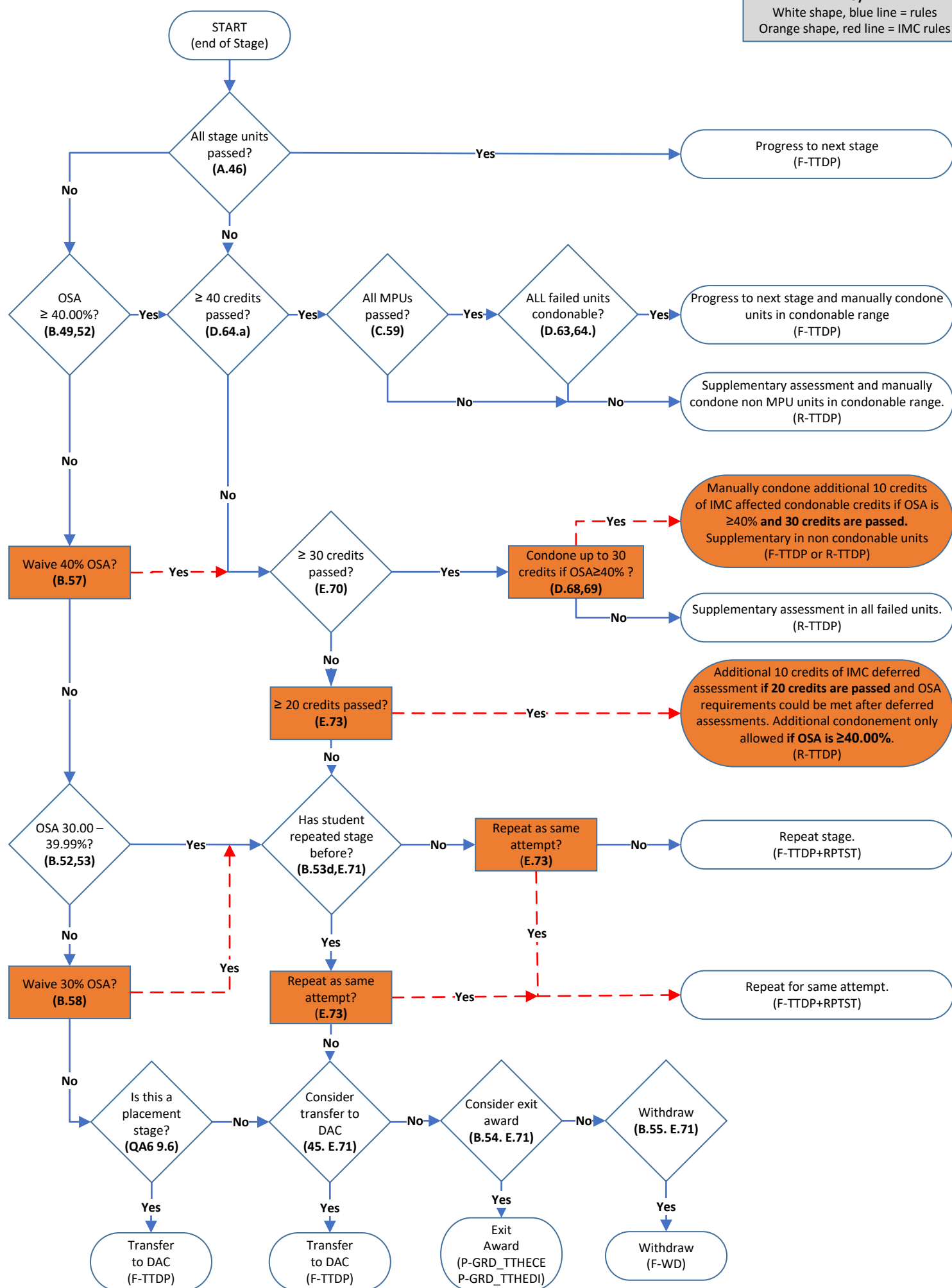
**Key:**  
White shape, blue line = rules  
Orange shape, red line = IMC rules



Flowchart 4:  
DAC is a continuing (non final) stage – Main assessment

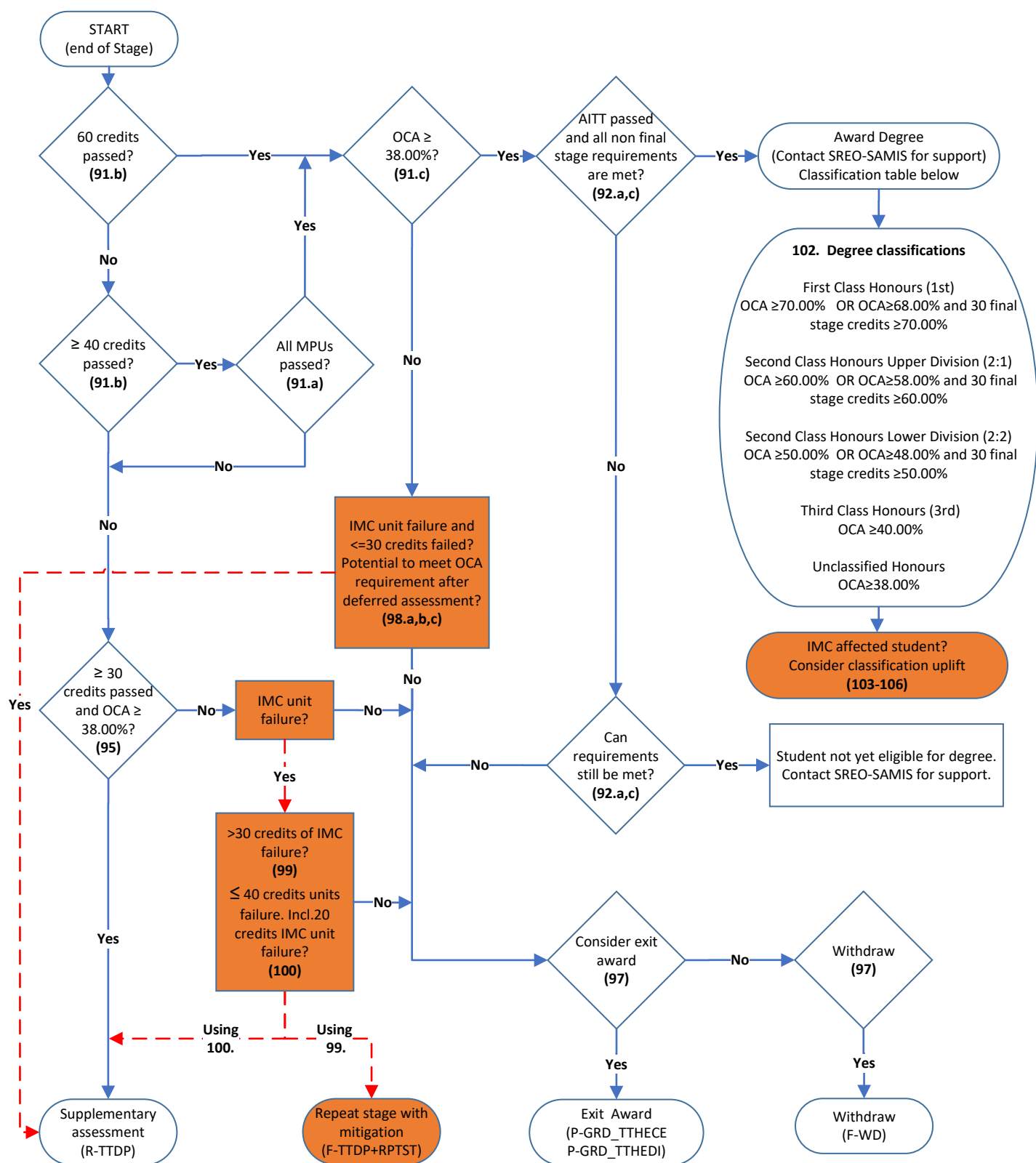
**Key:**  
White shape, blue line = rules  
Orange shape, red line = IMC rules

**Key:**  
White shape, blue line = rules  
Orange shape, red line = IMC rules

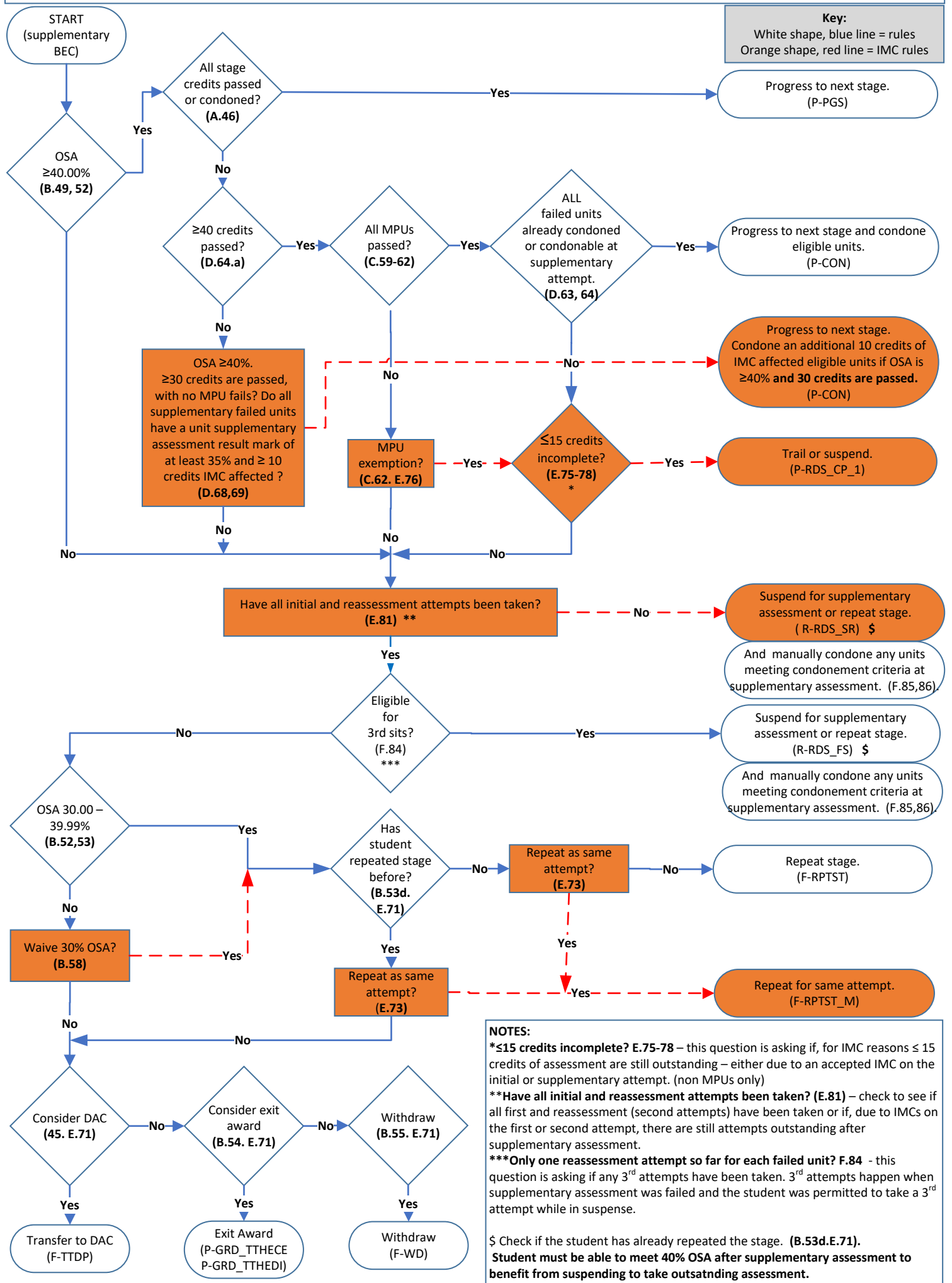


Flowchart 5:  
DAC is a final stage – Main assessment

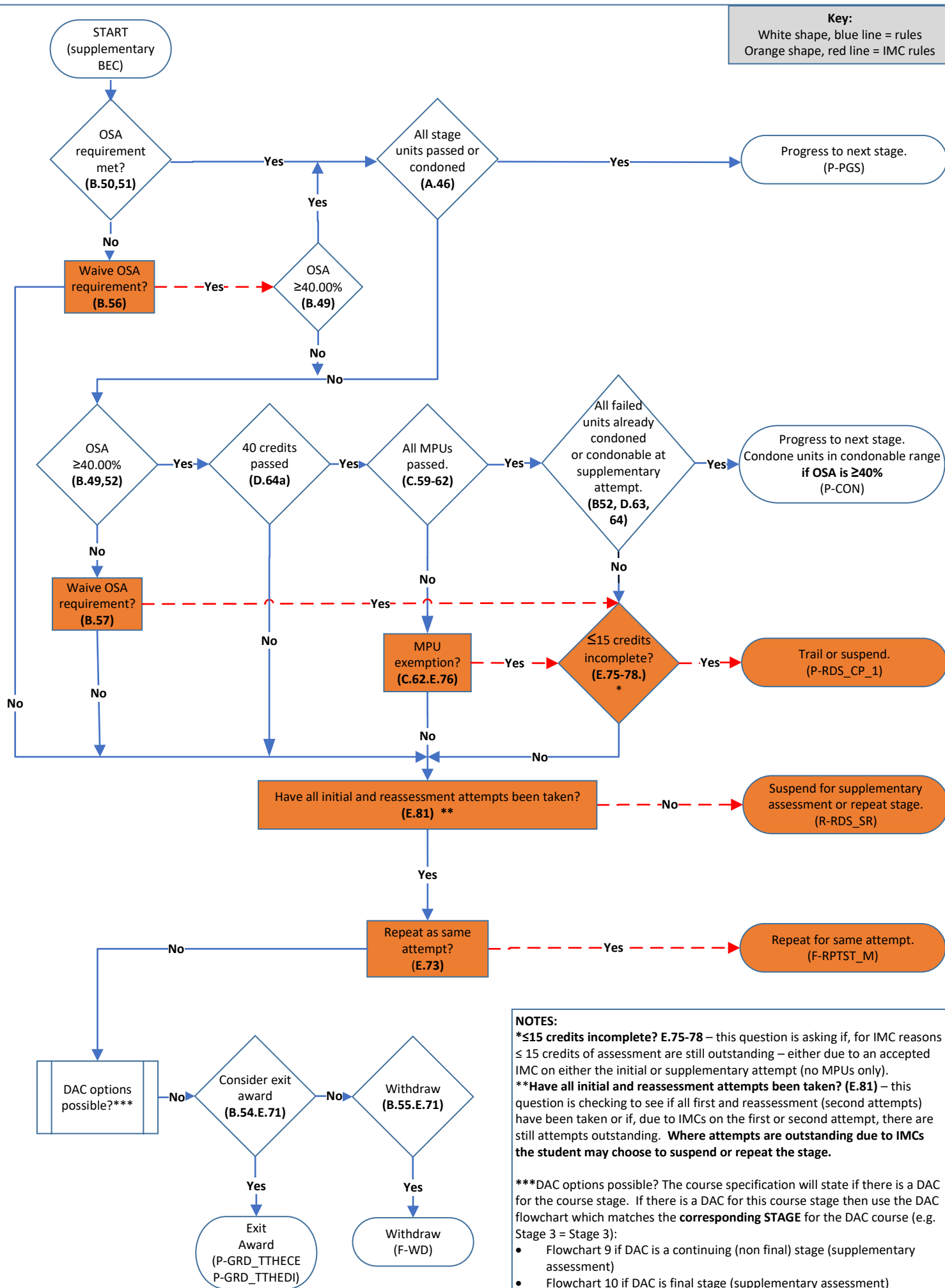
**Key:**  
White shape, blue line = rules  
Orange shape, red line = IMC rules



Flowchart 6:  
Continuing (non final) stage – supplementary assessment BEC



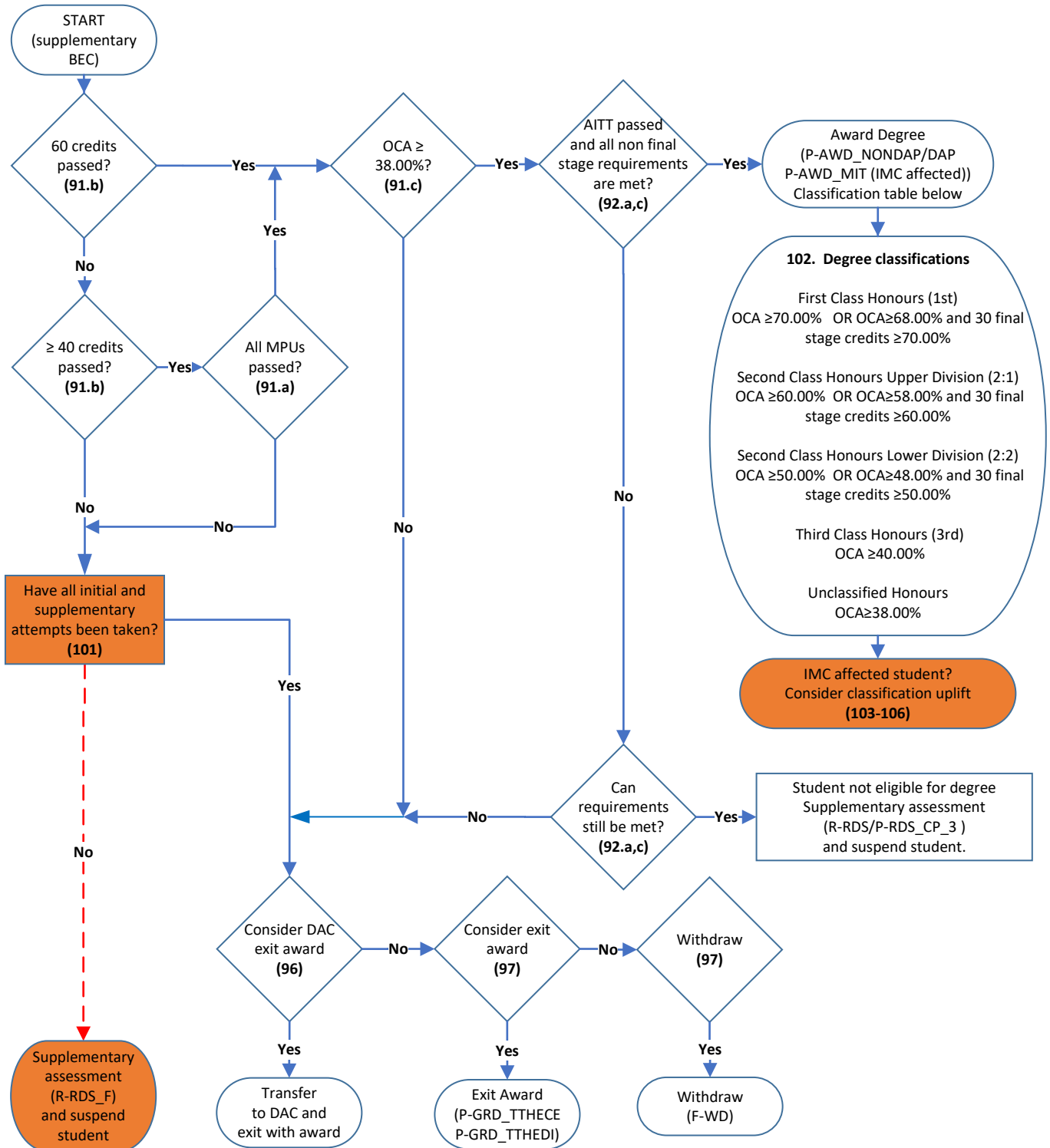
## Flowchart 7: Continuing (non final) stage - Co-existent undergraduate Masters - supplementary assessment



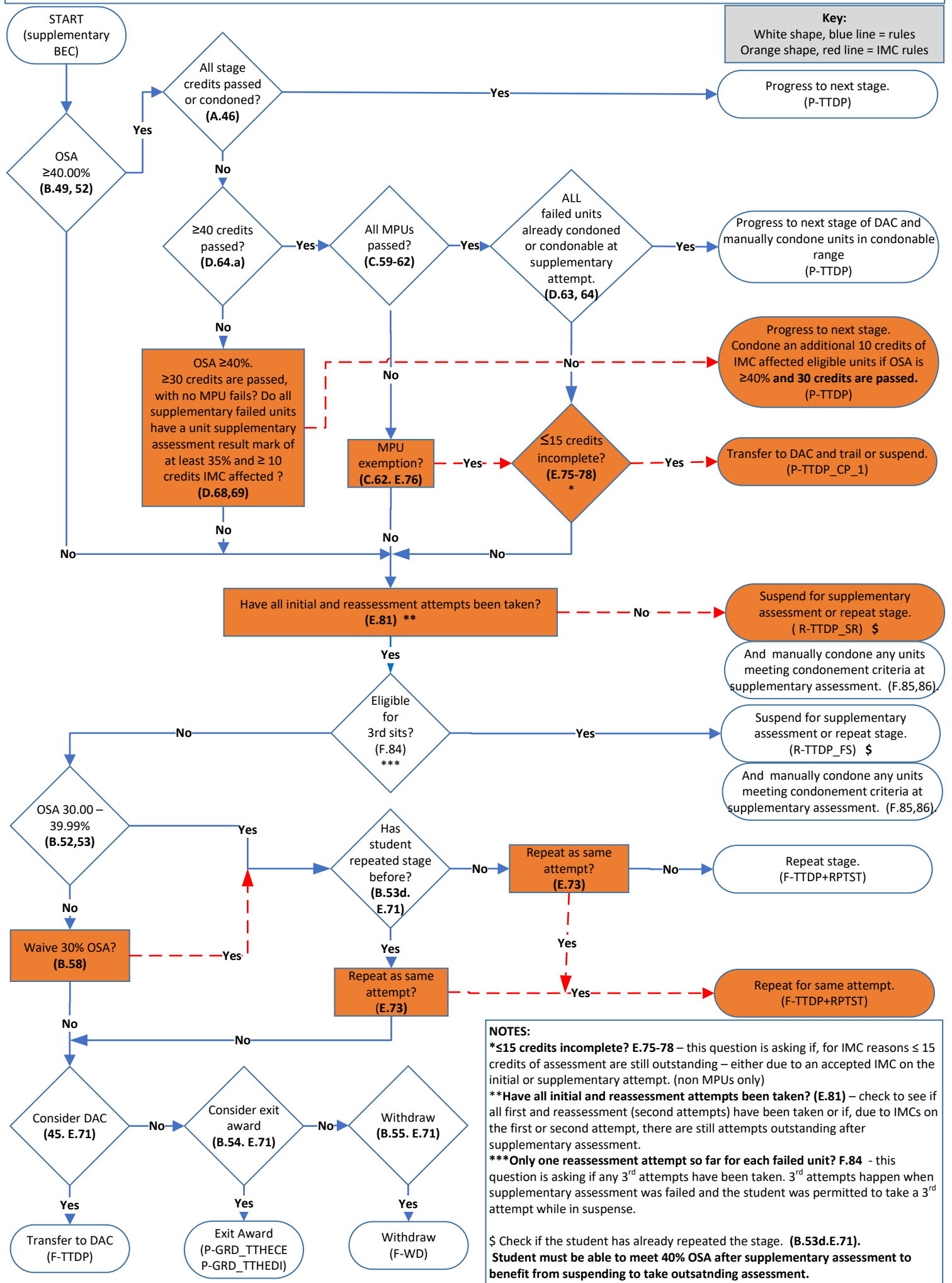


## Flowchart 8: Final stage – Supplementary assessment

**Key:**  
White shape, blue line = rules  
Orange shape, red line = IMC rules



Flowchart 9:  
DAC is Continuing (non final) stage – supplementary assessment BEC



## Flowchart 10: DAC is a final stage – Supplementary assessment

**Key:**  
White shape, blue line = rules  
Orange shape, red line = IMC rules

