

University of Bath International Foundation Year



Delivered by  Bath College



Welcome to the University of Bath International Foundation Year (IFY)

The University of Bath is highly ranked in national league tables for overall performance, student satisfaction and graduate employment. If you are an international student with high academic potential and superb motivation, but not the precise qualifications to allow direct entry to one of the University's degree courses, then the University of Bath International Foundation could be right for you.

For over 20 years the University of Bath and Bath College have been working together to offer students the opportunity to gain the academic knowledge, understanding and skills to secure guaranteed progression onto a wide variety of University of Bath undergraduate degrees.

During the University of Bath International Foundation Year, you will study at Bath College in the centre of Bath and reside in city centre University accommodation. You will be taught in small groups to ease your transition into studying in the UK and be fully supported throughout the course.

As well as the social and other activities offered by Bath College you can also look forward to visits to the University of Bath campus, which is less than two miles away, to attend events specifically for University of Bath International Foundation Year students. You will have access to the library on campus as well as the world-class Sports Training Village.

The International Foundation Year helps students to achieve the academic requirements and skills needed to progress to the University of Bath, as you live and study in a new country.

We look forward to being part of your journey to the University of Bath.

Dr Florin Bisset, Head of Learning Partnerships, University of Bath

Jayne Davis, Principal and Chief Executive, Bath College



Ranked 4th
for graduate prospects in
the Complete University
Guide 2024



Ranked 5th
in the Complete University
Guide 2024



Ranked 6th
in the UK in the Guardian
University Guide 2024



Ranked 8th
in the UK in The Times and
The Sunday Times Good
University Guide 2024

**Ranked in the
Top 100**

for employer reputation in
the QS World University
Rankings 2024

Take a dedicated pathway into a **Top-10 ranking UK University**

Select from a **wide range of University of Bath undergraduate degrees** (see pages 12-13)

Study from September to June at our partner institution Bath College in the city centre

Live in the heart of **one of the UK's most beautiful and historic cities**

Progress automatically to the University of Bath once you achieve your required grades (no separate UCAS application necessary)

Participate in specially arranged events on the University campus, just for IFY students

Be part of a diverse and vibrant student community. Studying on the IFY means being part of a lively, safe, and welcoming community. From the friendly support staff at Bath College to the IFY alumni you will meet at social events, you will quickly feel part of one big team as you meet new friends from all over the world.

#BelongatBath

Bath College

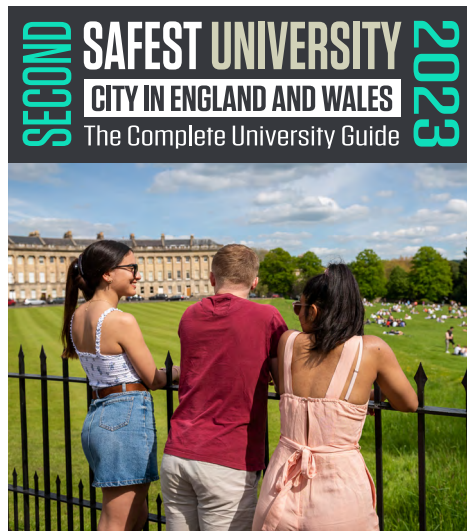


During your year as a University of Bath IFY student you will study at Bath College, our partner institution in the city centre. Here you will find small class sizes and lots of support as you adapt to living and studying in the UK. The College has a range of facilities to help you make full use of your first year in Bath, including a well-equipped learning centre and library, hair and beauty salons, and a café.

As an IFY student you will visit the University campus for events and activities. This ensures you are already familiar with the University and well prepared for your first year as an undergraduate student.

Bath is one of the UK's safest cities in which to study, and is the UK's only UNESCO World Heritage City.

Bath College is conveniently located a few minutes away from the city centre, Bath Spa railway station, and bus and coach station, so is the ideal place for students who want to explore the beautiful and historic city of Bath and beyond.



Entry requirements

We are looking for international students who have normally completed 12 years of school education at a level of achievement demonstrating solid academic potential.

To find out about the minimum qualifications needed for each country, visit: go.bath.ac.uk/international-foundation-entry-requirements

English language requirements:

To progress to a School of Management degree, you need a minimum UKVI IELTS of 6.0 overall, with at least 5.5 in each part.

To progress to any other degree, you need a minimum UKVI IELTS of 5.5 overall, with at least 5.0 in each part.

Pearson PTE Academic UKVI also accepted.

Fees

The University of Bath IFY tuition fee for 2024 entry is £17,000*

How to Apply

Find out about your country's entry requirements. If you cannot see your country listed, or if you have a qualification that is not mentioned, please e-mail IFY@bath.ac.uk for advice and guidance.

When you are ready to apply, you will need to complete the online application form [here](#). At the end of the online form, you will be prompted to submit your supporting documents (school transcript, personal statement, reference letter etc.) to IFY@bath.ac.uk

Don't worry if you don't have all your supporting documents available at the time of application. We may be able to issue a conditional offer based on just the core documents including the personal statement, passport and school transcript.

Please note: a deposit payment is required before we can make any offer unconditional.

**subject to change in future*

Scan here for country requirements



Scan here for online application form



My Student Journey: Getting Here



"When I first came to the UK, everything was very new to me as it was the first time I was leaving home and being in a new country without knowing anyone. During my induction the Bath College staff made me feel welcome by organising different activities during the first week. It was an amazing experience where I adapted very quickly thanks to the hospitality shown by the team."

Kejsi
from Albania

Nearly **75 different nationalities** have been represented on the University of Bath IFY over the last ten years



Accommodation

All IFY students are guaranteed an offer of accommodation which is managed by the University.

All University accommodation is secure and specially designed with students in mind. Your allocated halls of residence will be situated as close as possible to your lessons at Bath College.

After receiving your unconditional offer for the IFY, the University's Residence Life (ResLife) team will guide you through the booking process.

Accommodation will also be made available for you during Year 1 of your University of Bath degree.

Scan here for more accommodation information



Photo shown may not be exact type of accommodation offered

Academic Life

Classes

Your 32 weeks of tuition and assessment at Bath College is spread over two semesters. You will experience a comprehensive range of taught classes, tutorials and group work, as well as practical assignments and laboratory classes where appropriate. There are 21 classroom hours per teaching week.

Depending on your chosen progression degree, you will study a combination of three of the following subjects:

- Biology
- Business
- Chemistry
- Economics
- English for Academic Purposes (EAP)
- Mathematics
- Physics
- Social Science

You will also take classes in Introduction to Higher Education Study Skills and have regular tutorials to support your studies and personal development.

As well as classes, there are also self-study periods scheduled during the day.

Support

The experienced team at Bath College will ensure that you are supported from the induction week onwards. Student support is tailored, friendly, and encourages independence. Small class numbers provide support for personal and academic development. Advice will be available on visa documentation and renewal, health and welfare, social life, course information, careers, and life in the UK. You will also receive scheduled sessions from a Personal Tutor.

Assessment

You will be assessed by a varied combination of coursework assignments (presentations, timed essays, phase tests and written assignments) and examinations. There is an examination at the end of each semester for all subjects except Study Skills (which is assessed via a portfolio of evidence gathered throughout the year).

My Student Journey: Getting to know the University

"Being part of the International Foundation Year also made us part of the University of Bath. To ensure that everyone felt a member of this wider community, we went on organised visits to the University campus and even had the opportunity to attend a lecture!"

Kejsi
from Albania

"These events not only prepared us for university but also made us feel part of the University's diverse community."

Kristel
from Lebanon

"When I started University in Bath, I realised how much the IFY had helped me achieve the confidence and knowledge I needed."

Melissa
from Iran

The University of Bath International Foundation Year has been running for over 20 years with students progressing to undergraduate degrees at Bath and then on to postgraduate courses and PhD's.



Belonging in Bath

Studying in another country is not just about going to classes. It is also about learning about the culture, seeing the country and meeting new friends. To help you settle in and really make the most of your time in the UK, Bath College organises a variety of activities and visits over the year.

As an international student you can join in all events at the college, and you will also find a comprehensive programme of activities arranged just for the international community. You will also have the opportunity to go on trips with your fellow students.

Social Events

You will have events organised by Bath College and the University of Bath so that you quickly feel you belong.

Sports

You'll have access to a student exclusive [Sports Pass](#).

Our inspirational Sports Training Village, home to Olympic and Paralympic Champions, is also fully open to the public - check out our gym and fitness classes, 50m swimming pool, indoor and outdoor tennis courts and athletics track.

Library

You'll also have 24/7 access to the University Library, including at vacation times.

You will be issued with a University of Bath Library card, which you can use to browse the stacks, borrow books, or just come in and study!



My Student Journey:

Looking back at a great year of fun and hard work



"The University of Bath IFY provided me with fundamental knowledge which made understanding the content during the first year easier. Because my classmates on the IFY course were from all around the world, this helped me to understand and better engage people from different cultures."

Mick
from Thailand



University of Bath progression degrees

Dept of Mathematical Sciences

MMath Master of Mathematics
BSc Mathematics
BSc Mathematical Sciences
BSc Mathematics & Statistics
BSc Mathematics, Statistics and Data Science

Dept of Pharmacy and Pharmacology

MPharm Master of Pharmacy
BSc Pharmacology
MPharmacol Master of Pharmacology

Dept of Physics

BSc/MPhys Physics
BSc/MPhys Physics with Theoretical Physics
BSc/ MSci Mathematics and Physics
BSc/ MPhys Physics with Astrophysics

Dept of Chemical Engineering

BEng/MEng Chemical Engineering
MEng Chemical Engineering with Environmental Engineering

Dept of Biology and Biochemistry

BSc/ BMBiochem Biochemistry
BSc/MBiol Biology
BSc/MBioMedSci Biomedical Sciences

Dept of Mechanical Engineering

BEng/MEng Aerospace Engineering
BEng/MEng Mechanical with Automotive Engineering
BEng/MEng Mechanical Engineering
BEng/MEng Integrated Design Engineering
BEng/MEng Mechanical Engineering with Manufacturing and Management

Dept of Chemistry

BSc/MChem Chemistry
BSc/MChem Chemistry for Drug Discovery
BSc/MSci Chemistry with Management

Dept of Computer Science

BSc/MComp Computer Science
BSc/MComp Computer Science and Mathematics
BSc/MComp Computer Science and Artificial Intelligence

Dept of Architecture and Civil Engineering

BEng/MEng Structural & Architectural Engineering
BEng/MEng in Civil Engineering

Dept of Electronic and Electrical Engineering

BEng/MEng Computer Systems Engineering
BEng/MEng Electrical and Electronic Engineering
BEng/MEng Electronic Engineering with Space Science & Technology
BEng/MEng Robotics Engineering
BEng/MEng Integrated Mechanical & Electrical Engineering Degree (IMEE)

Dept of Economics

BSc Economics
BSc Economics & Politics
BSc Economics & Mathematics

School of Management

BSc in Business
BSc Accounting & Finance
BSc Accounting & Management
BSc Management
BSc Management with Marketing
BSc International Management

Department of Social and Policy Sciences

BSc International Development with Economics
BSc Sociology and Social Policy
BSc Sociology
BSc Social Sciences
BSc Social Policy
BSc Criminology

Dept of Psychology

BSc Psychology (3 year option only)

Dept for Health

BSc/MSci Sport and Exercise Science
BSc Sport Management & Coaching
BSc Health and Exercise Science

Dept of Politics, Languages & International Studies

BSc Politics with Economics
BA International Politics and Modern Languages
BSc Politics and International Relations
BA Modern Languages
BSc International Management with a Modern Language

Dept of Education

BA Education with Psychology

For further information about these degrees, including the grades you need to secure, please scan this QR code:



Getting here



Train journey times between Bath and:

- Bristol - 12 minutes
- London - 1 hour 20 minutes
- Cardiff - 1 hour 10 minutes
- Birmingham - 2 hours
- Manchester - 3 hours 30 minutes


Coach journey times between Bath and:

- Heathrow Airport - 2 hours 20 minutes
- Bristol Airport - 1 hour

Contact us

Find more information about the University of Bath International Foundation Year by visiting: go.bath.ac.uk/international-foundation

 IFY@bath.ac.uk

 +44 (0)1225 383874

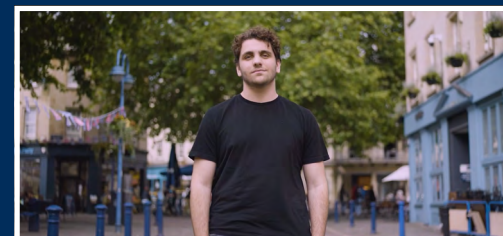
 go.bath.ac.uk/international-foundation



Scan the QR codes below to hear from our International Foundation Year students:



 Watch the video



 Watch the video

TOP 5 IN THE COMPLETE UNIVERSITY GUIDE 2024

#BelongatBath



UNIVERSITY OF
BATH

#BelongatBath