

The Library



UNIVERSITY OF
BATH

**WHILE YOU
WERE AWAY**
2019

**SPORTS UNIVERSITY
OF THE YEAR 2018**
The Times and The Sunday Times



THE SU
UNIVERSITY
OF BATH



BATH

TEF Gold

We've been awarded gold in the
Teaching Excellence Framework
We've been awarded gold in the

Presented by the Library

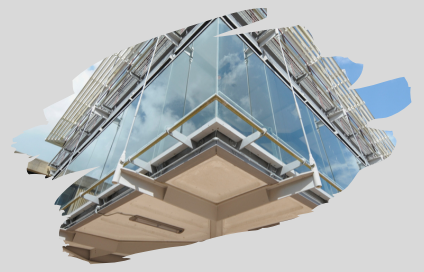
Library

Entrance

Library
University Reception
and Security

Library
University
and S

POWER UPDATE



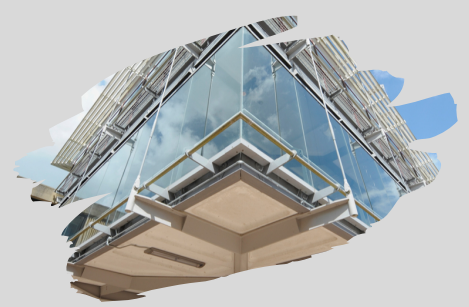
Over the Summer, we added **100 new power sockets** to study desks and replaced **200 existing sockets** with new twin **USB and power sockets**.

This brings up the total number of desks with easy access to power to **1,490**.

100% of all seats in study areas now have power.



TECHNOLOGY UPDATE



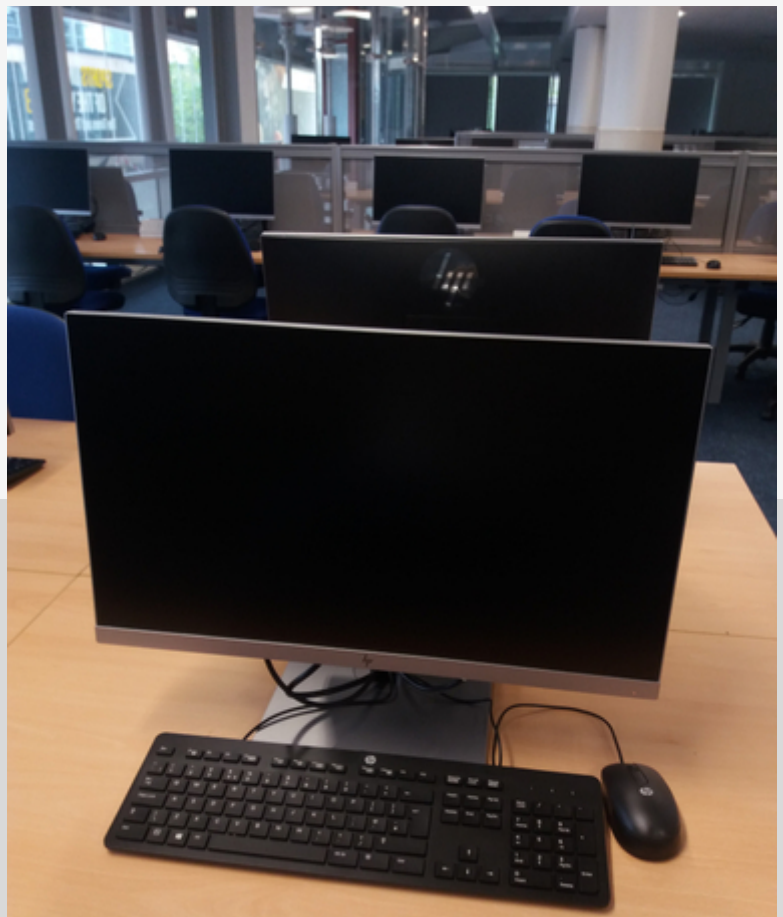
109 computers on Level 3 of the Library have been replaced over the summer.

The old machines used 4th generation Intel Core i7 processors, whereas the new, faster HP computers have 8th generation processors.

We have also addressed student comments about the monitors and have ensured all PCs have 24 inch TFT displays. All of these monitors are now height adjustable.

However, the biggest enhancement is in their physical design; the PCs are now smaller, with a significantly reduced footprint.

The PC's are a lot more power efficient, quieter as they have fewer fans, and therefore generate less heat. This should result in a more pleasant working environment.



New Library guides for information and research skills

What's in the Library for you?

- **Library Induction** - introduces new and returning staff and students to our services, facilities and resources - <https://library.bath.ac.uk/induction>

Better than Google

- **How to do a literature search** - explains how to target your searching, find the best academic sources and select the right databases for your literature search as well as how to choose and use keywords in effective search sentences and how to manage your search results-<https://library.bath.ac.uk/literaturesearch>

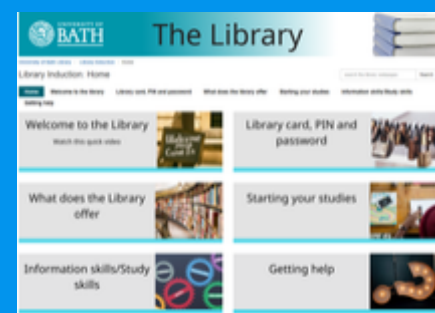
More than literature searching

- **How to conduct a systematic review** - explains how systematic reviews work, covering each of the many stages required: from formulating your question and writing a protocol, through searching, selecting studies and assessing evidence, to finally writing up your review - <https://library.bath.ac.uk/systematic-reviews>

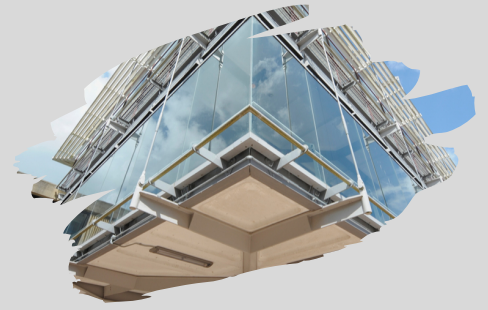
New Library guides for specific databases

Explore search tips and tricks, search filtering and how to manage your searches

- **Biomedical literature** - Embase, Medline and Embase Classic . <https://library.bath.ac.uk/embase>
- **Behavioural and social sciences literature** - PsycInfo. This can be searched on numerous platforms. This guide recommends using APA PsycNET - <https://library.bath.ac.uk/psycinfo>
- **Literature for health and biomedicine**, as well as behavioural sciences, bioengineering, chemical sciences and life sciences - PubMed. How to search using MEDLINE or Embase and how the coverage of the two platforms differs significantly - <https://library.bath.ac.uk/pubmed>



SCANNER FOR TECHNICAL SERVICES



The Library's Copy and Print team have a new piece of scanning equipment to enable them to make high quality digital copies of Library materials for Moodle and Bath Copies, with accessible copies for those students who need them.

The Zeutschel OS 12002 scanner can make scans of up to 600 dpi and digitise material up to A2 in size. The scanner's glass-raising mechanism makes scanning quicker and easier for staff and safer for books whose spines are protected. Once placed on the plates, the book can stay where it is and only the pages need to be turned.

NEW RESOURCES



The Library continually acquires print and online materials to support the University's teaching and research interests. The following provides a brief snapshot of new content acquired while you were away.

ALL SUBJECT AREAS:

We have recently updated our extensive Springer collections to provide more than 5,000 new e-books covering a broad range of disciplines (STEM, Management and more), as well as 4,000 new Springer protocols. For more detail and links go to: <https://tinyurl.com/y3w6dena>



NEW RESOURCES



SCIENCE

We have subscribed to 7 additional Nature journals (e.g. Nature Biomedical Engineering) and acquired backfiles to 3 other Nature titles (e.g. Nature Methods). The following newly subscribed database support research in the following areas:

- INSPEC (physics & engineering)
- SPIE (optics and photonics)
- Nature Nano (nanotechnology)
- Pharmapendium (pharmacovigilance and pharmacokinetics)

MANAGEMENT AND H&SS

New ebooks: More than 1000 IGI Global titles for Business, Management and Education. Oxford Handbooks 2018 and 2019 for Economics & Finance, Business & Management, as well as multiple Oxford Bibliographies for research.

New journals: 10 new journal and newspaper subscriptions to support teaching and research, including e.g. International Journal of Accounting, Journal of Experimental Political Science, El Pais, and more. Full text access to the Economist Historical Archive 1843-2015.

New databases:

- GlobalData (tobacco industry data)
- SNL Fig (global banking)
- Sage Research Methods video collection and dataset collections (parts 1 & 2)
- Sage Business Cases 2019 Collection

ENGINEERING AND DESIGN

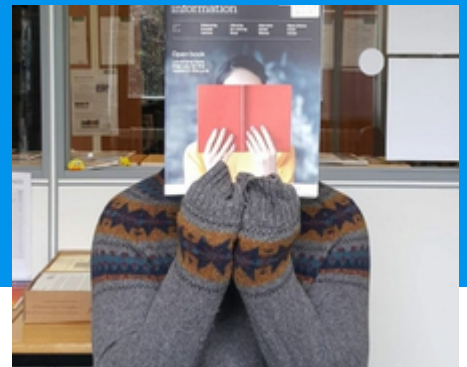
New e-books:

- IEEE-Wiley 2019 e-book frontfile
- MIT Press e-books 2015 collection
- New Springer e-book collection for 2019: Intelligent Technologies & Robotics (over 460 titles already available)

New journals: subscription to .amag international architecture technical magazine and preceding title Darco

New databases: Avery Index to Architectural Periodicals; INSPEC (physics & engineering)

Instagram @unibathlib



At the end of September we had 696 followers.

**We received 3,370 impressions, during
16th - 22nd September and over the Summer
achieved 2,843 Likes.**

**Audience cities: Bath, London, Bristol, Cardiff,
Shangai**

Audience countries: UK, China, India, Italy and USA

Thank you for following us!

REFERENCING GUIDANCE UPDATES

OVER THE SUMMER THE LIBRARY HAS REVIEWED AND UPDATED OUR INSTITUTIONAL CITING AND REFERENCING STYLE, HARVARD BATH.

Changes include new and expanded formats for unpublished materials and also streamed audio (e.g. podcasts).

Existing styles have been made more consistent e.g. Reports, Standards, House of Commons/Lords bills and more.

The Library

Harvard (Bath) Referencing Style

The Library provides an extended version of this guide, which gives further advice and more worked examples at <https://library.bath.ac.uk/referencing>

Please note that there are many versions of 'Harvard' style which is a name-date style. Examples of Harvard include APA, Chicago and MLA. This guide gives the University of Bath Library's interpretation, which is based on BSISO standards developed in 1989-1990 and adapted in line with local preferences.

Citation

Cite your sources within your text by giving the author's surname and year of publication.

If there are two or three authors, cite all surnames, but if there are four or more, give the first surname only followed by 'et al.', from the Latin *et alia*, meaning 'and others' e.g. (Winston et al., 2018)

Differentiate between multiple sources by the same author published in the same year by adding lower case letters (a, b, c) after the year. e.g. (Sleg, 2019a) or (Sleg, 2019b) etc.

Include page numbers if necessary e.g. to point out a particular page in a long document such as a book, or when referencing a specific quotation, image or figure, e.g. (Burchard, 1965, p.556)

Organisations can also be authors e.g. University of Bath, UNESCO, EU. If you really cannot identify a named author use 'Anon.'. If no date is known, use 'n.d.'. If place published is unknown, use 'l.i.'. If publisher is unknown use 's.n.'

Reference list

Detailed references are listed at the end of your work. This list can be entitled 'References' or 'Reference list' and is arranged **alphabetically** by the author's surname. If there are two books by the same author, list the earliest one first.

For further advice please refer to the extended online guide: <https://library.bath.ac.uk/referencing>

Reference examples

For more document types, see the extended version of this guide at <https://library.bath.ac.uk/referencing/harvard-bath>

1. Book with author(s)

Author's surname(s), INITIALS., Year. Title. Edition (if not the first). Place of publication: Publisher.

Rang, H.P., Dale, M.M., Ritter, J.M., Flower, R.J. and Henderson, G., 2012. *Rang and Dale's pharmacology*. 7th ed. Edinburgh: Elsevier Churchill Livingstone.

Open University, 1972. *Electricity and magnetism*. Bletchley: Open University Press.

Note: You can shorten the name of the publisher, e.g. for John Wiley and Sons Inc., use Wiley.

Our full guide including downloadable style files for EndNote and other products can be found online at:
<https://library.bath.ac.uk/referencing/harvard-bath>

The Library



Reports (e.g. research, company, government or annual reports), working papers, or research briefings

Author, Year. Title. (Report or working paper number, if given). Place of publication: Publisher.

UNESCO, 1993. *General information programme and UNISIST*. (PGI-93/WS/22). Paris: UNESCO.

BRE, 2007. *Designing quality buildings: a BRE guide*. (Report 497). Bracknell: BRE.

REFERENCING GUIDANCE UPDATES

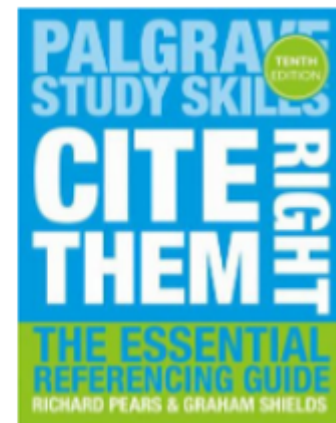
OVER THE SUMMER THE LIBRARY HAS REVIEWED AND UPDATED OUR INSTITUTIONAL CITING AND REFERENCING STYLE, HARVARD BATH.

The Centre for Learning and Teaching (CLT) has now subscribed to the Cite Them Right online platform which you may also find very helpful when using other referencing styles:

<http://go.bath.ac.uk/cite-them-right>

- Extra guidance has been included in our 'Write a reference' and 'Write a citation' notes, but also specifically for legal and government documents to make them easier.
- Finally, several corrections and amendments to example references have been made. These changes are now reflected in our institutionally licensed EndNote/EndNote Online reference management tools.

Resources on referencing



Cite Them Right Online

This guide to referencing for students and authors provides

◀ detailed examples for all print and electronic sources, business, government, technical and legal publications, works of art and images. ▶

Please note: Cite Them Right is great to reference other sources that aren't listed on this page.

However, you will need to adapt the examples from the book to the Harvard Bath style, as the Harvard style used by Cite Them Right is different.

RESEARCH SERVICES: OPENING UP, PROMOTING AND PRESERVING THE UNIVERSITY'S RESEARCH



Our Library Research Services team have been busy this summer, working with and developing new services to support the University's research community:



- **Helping researchers to make their work open access for maximum impact (and in readiness for the upcoming Research Excellent Framework).**
- **Providing expertise in the management of research data, including developing a series of range of new 'working with data' workshops.**
- **Curation and publication of research data via our Research Data Archive.**
- **Helping researchers to make responsible and effective use of publication, citation and collaboration data to evidence strengths, inform publication strategies and make connections.**
- **Developing, curating and promoting the use of our archives and special collections to support learning, teaching and research.**

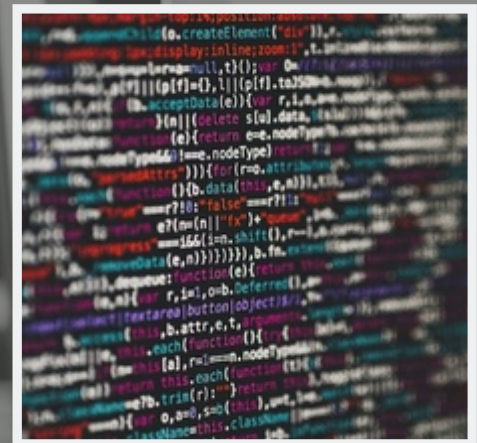
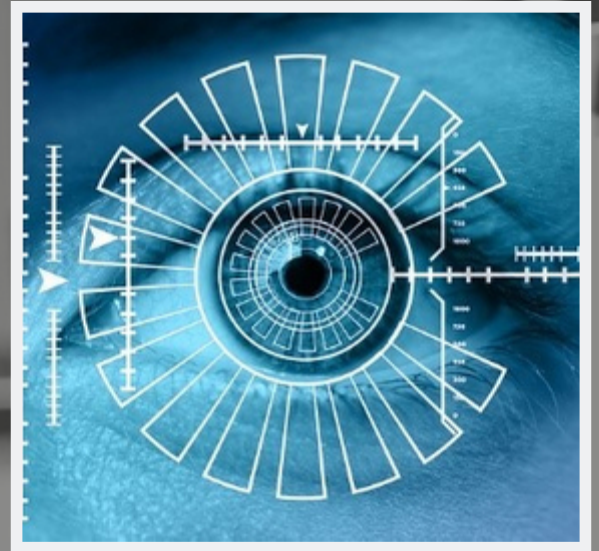
Find out more at:
<https://library.bath.ac.uk/research-services>



NEW 'WORKING WITH DATA' CURRICULUM FOR ALL RESEARCHERS

The Library's Research Services in collaboration with James Grant from Advancing Research Computing have developed a new 'Working with Data' curriculum for all postgraduate researchers and staff.

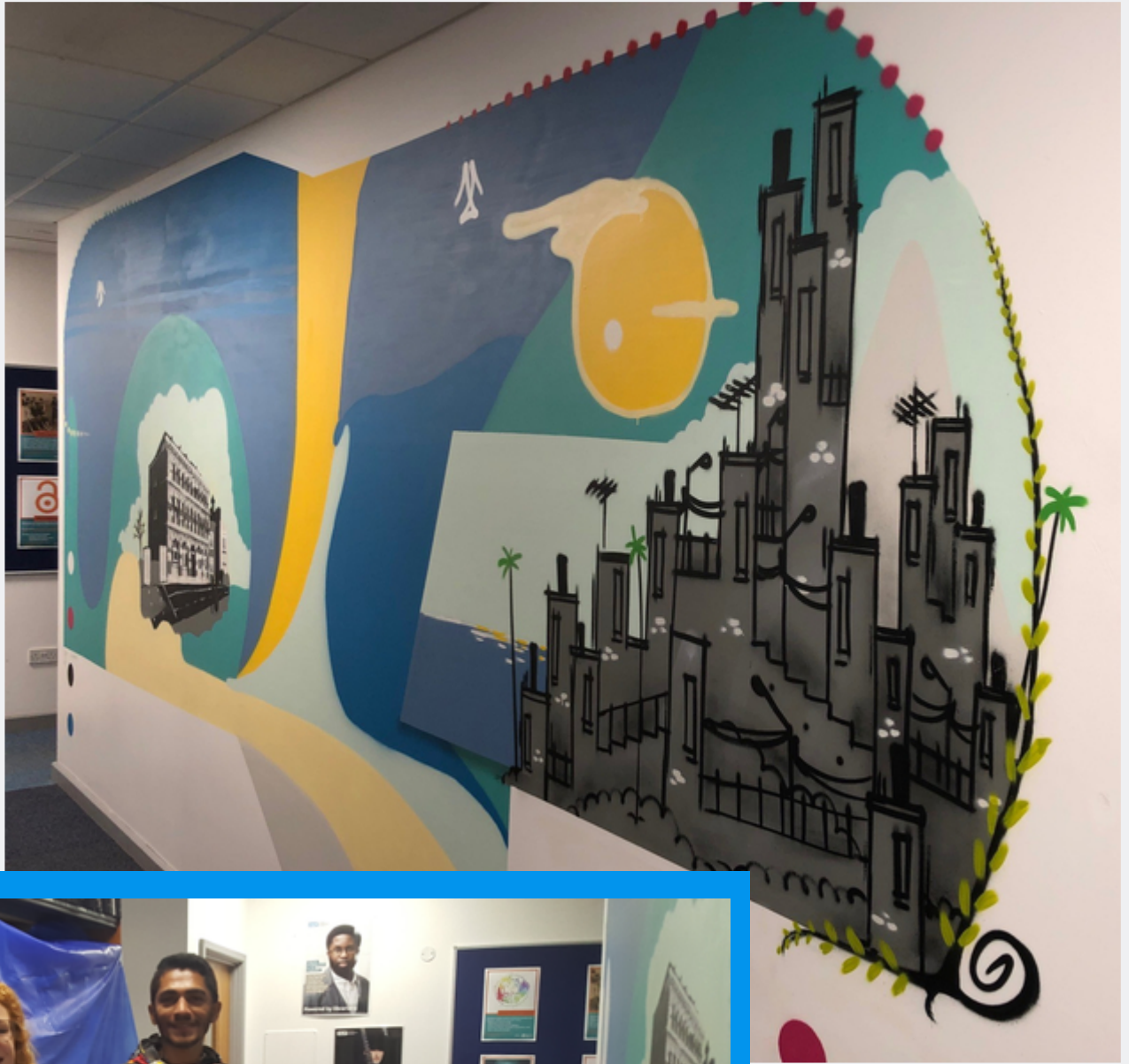
Doctoral students can book onto these courses via the links below and through the DoctoralSkills Moodle course. Staff can book through Academic Staff Development.



COURSES

Introduction to Linux
Introduction to programming in Python
Version control with Git
Introduction to testing (in Python)
Working with data and plotting (in Python)
Now Code (in Python)
Functions and classes in Python
Libraries and modules in Python
Collaborating, testing and CI (in Python)
Performant Python (course began 23 September 2019)
Introduction to LaTeX for doctoral students (and staff)
LaTeX refresher course
The 4 Ps of research data management: Plan, Protect, Publish and Promote
Writing your data management plan for non-sensitive data
Writing your data management plan for human participant data
Data organisation in spreadsheets: making your data work for you
Introduction to SQL for data manipulation
Introduction to R and RStudio for descriptive statistics
R and RStudio for data cleaning and visualisation
Managing human participant data
Archiving, publishing and sharing your research data: non-sensitive data
Archiving, publishing and sharing your research data: human participant data

STREET ART IN THE LIBRARY: CO-CREATION RESEARCH PROJECT. THE POLITICS OF CULTURE AND MEMORY RESEARCH CLUSTER.



**Kate Robinson
(University
Librarian),
meeting the
artist Leandro
Rodrigues de
Souza.**

CO-CREATION



When Brazilian street artist and cultural activist Leandro Rodrigues de Souza, known as Leandro Tick, visited the UK in September 2019 as part of the Co-Creation research project we were keen to introduce him to some of our archival collections.

Leandro lives and works in the favela of Tabajaras in Rio de Janeiro, Brazil. He started painting graffiti in 2001 and, since 2006, he has been teaching street art to children, participating in social projects, and organizing collective art events in the city. He co-founded CALLE, an association that promotes cultural exchange between locals and foreign volunteers, and initiated the Connexion Tabajaras Project to establish an open-air community gallery supported by a team of local guides.

Co-Creation is a four-year project funded by the EU's Marie Curie/RISE Horizon 2020 scheme that brings together researchers, policymakers, residents, artists, and other stakeholders to 'co-create' understanding about urban neighbourhoods in Europe and Latin America. The methodology advanced by the project promotes social justice through an arts-based, participatory approach allowing those involved to share knowledge and experience, acquire transferable skills, form networks, and build cohesive communities.

The international Co-Creation consortium is made up of four universities and three NGOs. Dr Christina Horvath (PoLIS) is a founding member. She leads a team of 20 University of Bath researchers from across the Faculty of Humanities & Social Sciences.

Leandro has been collaborating with the Co-Creation project since 2018, contributing to workshops and arts-based research. His art takes many forms, but he is especially well known for depicting cityscapes, flora and fauna, and people from favelas. We liked the idea of showing him some of the historic photos of urban neighbourhoods in the Library's Bristol Region Building Record. The artwork you see on this wall is what Leandro was inspired to paint. It includes some of his characteristic favela buildings and an iconic building in Stokes Croft, an area regarded by some as the birthplace of Bristol's street art movement.

Follow Leandro @leandrotick2

Find out more about Co-Creation at <https://www.co-creation-network.org/>

