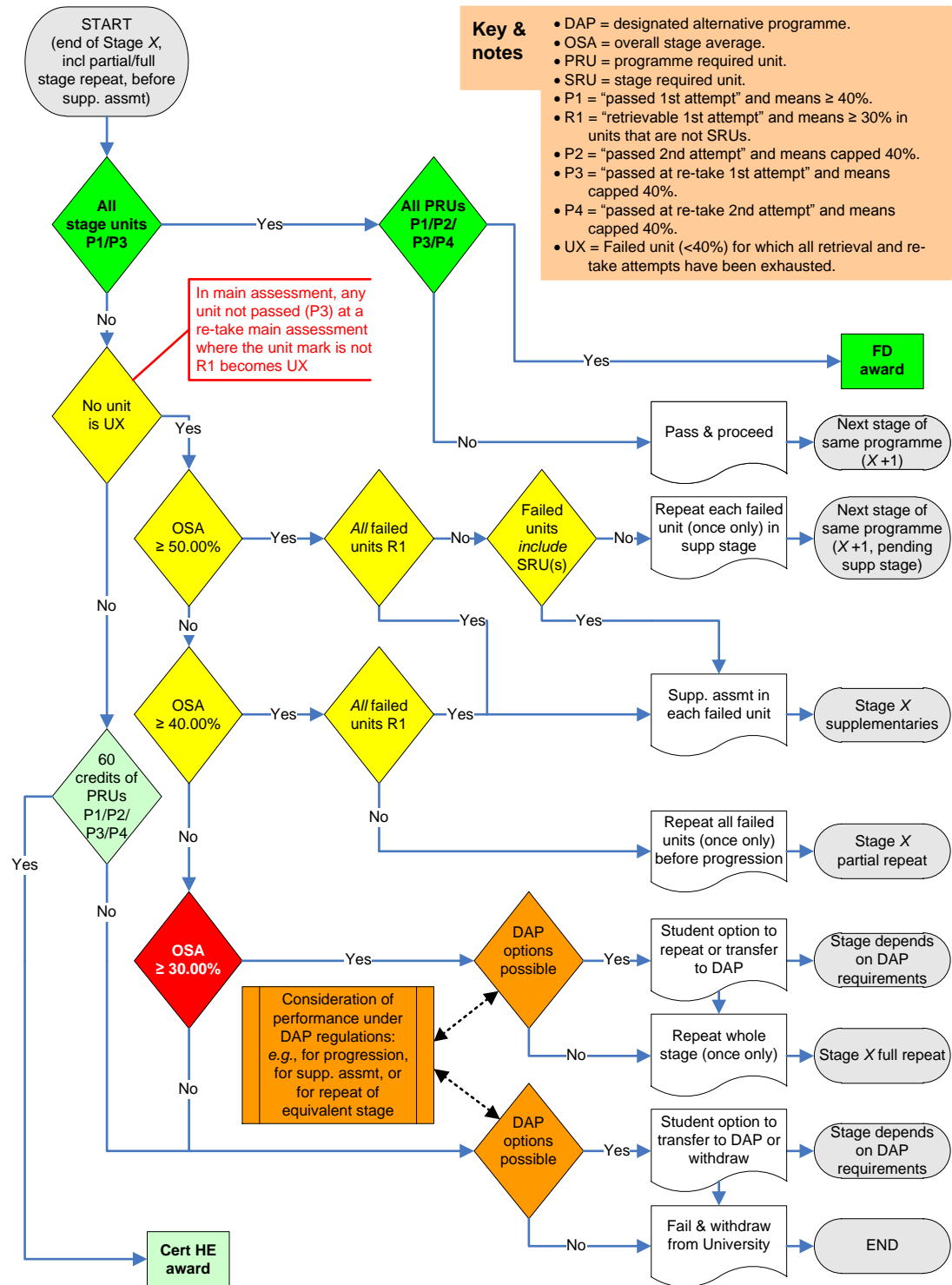


## Appendix 11: Foundation degrees / Parts 2 & 3 / All stages / Main assessment

1. This appendix relates to the detailed stage assessment criteria for:
  - Degree programmes leading to Foundation degree awards, and
  - Part 2 and Part 3 decisions with stages comprising any total number of credits, at
  - The close of the main assessment period.
2. The following abbreviations and rules apply in these detailed criteria (for fuller descriptions see: Appendix 2: Definitions):
  - DAP = designated alternative programme.
  - OSA = overall stage average.
  - PRU = programme required unit.
  - SRU = stage required unit.
  - P1 = “passed 1st attempt” and means  $\geq 40\%$ .
  - R1 = “retrievable 1st attempt” and means  $\geq 30\%$  in units that are not SRUs.
  - P2 = “passed 2nd attempt” and means capped 40%.
  - P3 = “passed at re-take 1st attempt” and means capped 40%.
  - P4 = “passed at re-take 2nd attempt” and means capped 40%.
  - UX = Failed unit (<40%) for which all retrieval and re-take attempts have been exhausted. (In main assessment, any unit not passed (P3) at a re-take main assessment where the unit mark is not R1 becomes UX.)
3. The following detailed assessment criteria will be applied in sequence at the end of a stage (before any supplementary assessment) in respect of compulsory or optional/elective units (but excluding extra-curricular units).
4. After due consideration of the results by the Board of Examiners for Programmes and in the absence of any relevant individual mitigating circumstances, a student who:
  - a. In a normal (non-partial-repeat) stage has passed (P1) all units and has passed (P1/P2/P3/P4) all programme required units (PRUs) will be awarded the appropriate Foundation degree.
  - b. In a partial-repeat stage has passed (P3) all units and has passed (P1/P2/P3/P4) all programme required units (PRUs) will be awarded the appropriate Foundation degree.
  - c. In a normal (non-partial-repeat) stage has passed (P1) all units, will be permitted to proceed to the next stage of the programme.
  - d. In a partial-repeat stage has passed (P3) all units, will be permitted to proceed to the next stage of the programme.
  - e. Has no failed unit (<40%) for which all retrieval and re-take attempts have been exhausted (UX) and has an overall stage average (OSA) of at least 50.00% and has only R1 failures, will be required to take supplementary assessment in each failed unit before the start of the next academic stage with a view then to qualifying to proceed to the next academic stage of the programme.

- f.** Has no failed unit (<40%) for which all retrieval and re-take attempts have been exhausted (UX) and has an overall stage average (OSA) of at least 50.00% and has at least one failure outside the R1 definition of which at least one is a stage required unit (SRU), will be required to take supplementary assessment in each failed unit before the start of the next academic stage with a view then to qualifying to proceed to the next academic stage of the programme.
  - g.** Has no failed unit (<40%) for which all retrieval and re-take attempts have been exhausted (UX) and has an overall stage average (OSA) of at least 50.00% and has at least one failure outside the R1 definition but no failed stage required units (SRUs), will be required to repeat each failed unit in a supplementary stage of study at the end of the programme.
  - h.** Has no failed unit (<40%) for which all retrieval and re-take attempts have been exhausted (UX) and has an overall stage average (OSA) of at least 40.00% and has only R1 failures, will be required to take supplementary assessment in each failed unit before the start of the next academic stage with a view then to qualifying to proceed to the next academic stage of the programme.
  - i.** Has no failed unit (<40%) for which all retrieval and re-take attempts have been exhausted (UX) and has an overall stage average (OSA) of at least 40.00% and has at least one failure outside the R1 definition, will be required to repeat each failed unit in an intercalated supplementary stage of study before the start of the next normal academic stage of the programme with a view then to qualifying to proceed to the next academic stage of the programme.
  - j.** Has no failed unit (<40%) for which all retrieval and re-take attempts have been exhausted (UX) and has achieved an overall stage average (OSA) below 40.00% but at least 30.00%, will be considered for and may be permitted if the student wishes to transfer to any designated alternative programme (DAP) on the terms specified in its transfer requirements, or otherwise will be required to repeat the whole stage (teaching and assessment) in the next appropriate academic period, with a view then to qualifying to proceed to the next stage of the programme.
  - k.** Has no failed unit (<40%) for which all retrieval and re-take attempts have been exhausted (UX) and has achieved an overall stage average (OSA) below 30.00%, will be considered for and may be permitted if the student wishes to transfer to any designated alternative programme (DAP) on the terms specified in its transfer requirements, or otherwise will be required to withdraw from the programme and from the University.
  - l.** Has at least one failed unit (<40%) for which all retrieval and re-take attempts have been exhausted (UX) but has passed (P1/P2/P3/P4) all appropriate programme required units (PRUs) will be awarded a Certificate of Higher Education.
  - m.** Has at least one failed unit (<40%) for which all retrieval and re-take attempts have been exhausted (UX) and has not passed (P1/P2/P3/P4) all appropriate programme required units (PRUs) for the award of a Certificate of Higher Education, will be considered for and may be permitted if the student wishes to transfer to any designated alternative programme (DAP) on the terms specified in its transfer requirements, or otherwise will be required to withdraw from the programme and from the University.
- 5.** The above decision-making process is illustrated as a flowchart below in Figure 2.

Figure 2: Foundation degrees / Parts 2 & 3 / All stages / Main assessment



This page is intentionally blank