

University
of **Bath**
Undergraduate **Guide**
2018



TOP 5

UK UNIVERSITY
The Guardian 2018



UNIVERSITY OF
BATH

Welcome to the University of Bath

The University of Bath is a world class university in a world heritage city – a nurturing environment for enterprising minds.

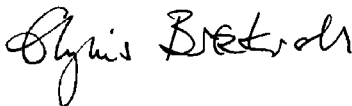
Our growing international reputation is built upon both the excellence and impact of our academic research, and the exceptional quality of the innovative educational and extra-curricular experience enjoyed by our students.

Our students are amongst the most satisfied in the UK and we are continuously improving our facilities both on campus and elsewhere.

Our courses are designed to provide both rigorous intellectual challenge and real-world relevance, giving our students the opportunity to study with researchers who are leaders in their field. Our outstanding placement scheme helps ensure that our highly sought-after graduates are well attuned to meet the evolving needs of employers.

Our vibrant campus – and location right on the edge of Bath – provide our diverse community of undergraduate and postgraduate students with superb sporting, social and cultural opportunities.

Join our close-knit, high achieving community to gain the knowledge, skills and experience you'll need to thrive in a world of global networks.



Professor Dame Glynis Breakwell
President and Vice-Chancellor



1st FOR UNIVERSITIES
STUDENTS WOULD
RECOMMEND
TO A FRIEND
THE UNIVERSITY
STUDENT EXPERIENCE SURVEY 2016

6th for Graduate
Employment
The Guardian 2018

Open Days

Thursday 15 June 2017

Friday 16 June 2017

Saturday 16 September 2017

Further dates may be added, see:
www.bath.ac.uk/opendays



Find out what our students think. Look out for this box in the prospectus to see what they've been writing: go.bath.ac.uk/student-bloggers

Bath Blogs

Why Bath?	3
Placements	6
Study abroad	7
Employability	8
Your learning	9
Accommodation	10
Our campus	12
Your Students' Union	13
Sports	14
Arts	16
International students	18
City of Bath	20
Supporting you	22
Funding your studies	24
Admissions	27
Our courses	29
Visit us	33

University of Bath
Claverton Down, Bath, BA2 7AY

go.bath.ac.uk/study2018

Tel: +44 (0)1225 388388 (Switchboard)
Tel: +44 (0)1225 383019 (Admissions Office)
Fax: +44 (0)1225 386366

Enquiry form:
go.bath.ac.uk/ask-admissions
UCAS code: B16



facebook.com/uniofbath



twitter.com/uniofbath



instagram.com/uniofbath

Order an Undergraduate prospectus

You can order a copy of the Undergraduate prospectus here:
go.bath.ac.uk/order-prospectus

If you require the prospectus in large print or Braille formats
please email admissions@bath.ac.uk



Why Bath

Academic Excellence:

Learn from leaders in your field

We are a **Top 10 UK** university (*Guardian University Guide 2017*) with **87% of our academic research classed as world-leading** or internationally excellent by the most recent independent REF assessment. You will benefit from innovative research-led teaching and discover cutting-edge developments in your area of study.



“Reading textbooks that your lecturers have written and hearing about their research is impressive and inspiring! It’s reassuring to know that your lecturers really are the experts in their field and are at the forefront of advances.”

Laura Petitt,
BSc Psychology



“The placement opportunities at Bath are second to none. Having a placement team focused on your particular department, and in some cases specifically for your course, is hugely beneficial.”

Mia Simon,
BSc Business Administration

Employment:

We'll help you find your dream job

We are ranked in the **Top 5** for UK graduate prospects (*Guardian University Guide 2017*). **86%** of employed Bath graduates move into top-level jobs, compared to 66% nationally, and enjoy an average starting salary £4,500 higher than the national average.

Experience:

Pursue your own path
and stand out from the crowd

We are the University **most likely to be recommended by our students to their friends** and **Top 5 for all-round experience** (*THE Student Experience Survey 2016*). Our outstanding Sports Training Village means we are consistently ranked amongst the best for sport. Our new arts centre, The Edge, is a hub for performance and cultural events. You can learn a new skill, volunteer or get involved with the 200+ clubs and societies through our award-winning Students' Union.

"The University provides so many opportunities for broadening your horizons. I'm in the Surfing, Art and Amnesty International societies as well as in a training group for the Prague Marathon. Not only are these activities fun and a great way to meet people, but they will also look great on my CV."



Karolina Wozniak,
BSc Psychology

"In my first-year accommodation I'm living with people from Italy, Belgium, Poland and Hong Kong. Having such a diverse range of cultures mixing in one place has been great. I'm considering New Zealand for a placement or study year abroad in my third year."

Robert Brett,
MPhys Physics

Global:

Experience the whole world

One third of our students come to study with us from outside the UK, representing over 100 different nationalities. Our teaching and research links provide opportunities for students to study abroad, including partners in the USA, Argentina, Hong Kong, New Zealand and Europe. As a Bath graduate, you will join a diverse, dynamic, globally-connected community.



“Bath itself is such a beautiful city so it is a pleasure to be able to study there. Bath is big enough to be interesting but it isn’t so big that it gets confusing!”

Jemima Smallwood,
MPharmacy

Location:

A vibrant and inspiring city in which to live and study

Our **award-winning campus** is set amongst green fields on the edge of Bath, the only entire city in the UK with **World Heritage** status. We’ve invested **over £215 million** to create new learning facilities and new accommodation with more to come. Within easy reach you can find year-round cultural festivals, famous tourist attractions, big-name and independent shops, and a cosmopolitan choice of bars, pubs and restaurants.



These students are just a few of our fantastic student bloggers, who write about their experiences at the University of Bath and share ideas and advice about starting university.

Whether you are looking for advice on writing your personal statement, an insight into student life at Bath, or want to learn how to survive Freshers Week, find out what our students have to say:

go.bath.ac.uk/student-bloggers

Bath Blogs



Placements

Work placement experiences are an excellent way to enhance your learning and employability.



“One of the key strengths I’ve found for Bath students is that they’re well rounded; they’re not just academic, they know the real world, which is really important”

Bhavik Davda,
Head of CRM & Insight,
Superdrug



“For my placement I worked in a neurobiology laboratory in Australia. The work was all practical and allowed me to apply the knowledge I’d learnt

in the first two years of my degree. I cannot emphasise enough how rewarding the experience was! I gained vital skills and confidence living abroad.”

Charlotte Bailey, BSc Biology

Bath graduates are highly valued and sought after by leading graduate employers and we are focused on getting you ready for a competitive work environment. Going on placement is an excellent way of enhancing your employment prospects and applying what you have learnt during your course in a practical environment.

Our students work in highly innovative and dynamic companies in industries across all sectors. Recently they

have been on placement with leading UK and global employers such as Cancer Research UK, Microsoft, the United Nations, L’Oreal, Dyson, and Goldman Sachs.

Many of our students find paid placements with a salary in the region of £15-25K p.a. but you can choose to do an unpaid placement in hospitals, charities and academic institutions.

Study abroad

Choosing to live, study and work abroad during your degree is a fantastic way to expand your horizons.

Our European exchanges take place under the well-established Erasmus+ Programme of the European Commission – but if you want to go further afield we also have exchange agreements with partner institutions in Australia, South Africa, Argentina, Hong Kong, Canada, Mexico, New Zealand and the USA among others.

Study abroad opportunities are competitive and vary between departments, get in contact with your department for more information:

go.bath.ac.uk/study-abroad



Watch our student videos about their opportunity to study abroad:

go.bath.ac.uk/management-study-abroad

go.bath.ac.uk/polis-study-abroad



“A study year abroad at the National University of Singapore was an amazing opportunity to experience a different culture and education system. It’s put me in a good position for my final year at Bath and I believe it will also give me a competitive edge when applying for jobs in the future!”

Ella Reed, MChem in Chemistry



Fees and funding

For information about the tuition fees for placements and study abroad opportunities please visit go.bath.ac.uk/funding. UK home students should refer to their relevant student loans awarding agency for details about funding for placements or study year abroad.



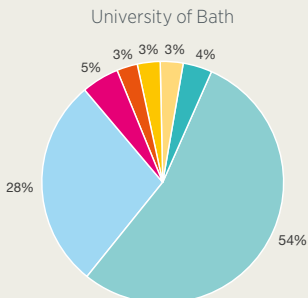
Find out what our students think: go.bath.ac.uk/blog-placements

Bath Blogs

Employability

We are well-known for the success of our graduates in the employment market, and will provide a wide range of support as you launch your career.

Job level



Careers

86% of our UK first degree full-time graduates are in jobs in one of the top three classes (management, professional and associate professional/technical). The mean starting salary for our graduates is £26,000. That is £4,500 higher than the equivalent for all UK HE providers.*

Make the Bath Connection

We aim to help you gain a competitive edge whatever your career aspirations. That's why the University now offers Bath Connection: an online system which connects students with the wealth of expertise within our graduate network.

Professional or Managerial Jobs

- Managers, directors and senior officials
- Professional occupations
- Associate professional and technical occupations

Not Professional or Managerial Jobs

- Administrative and secretarial occupations
- Skilled trades

Learn another language

We have a wide range of free language opportunities. Learning a language will increase your employability, help to make you more inter-culturally aware and enable you to acquire a useful lifelong skill.

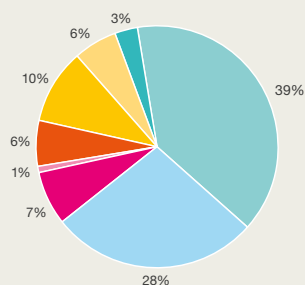
The Bath Award

The Bath Award is a way of showcasing all you have achieved at University and enables you to enhance your employability. Extra-curricular activities, work experience, volunteering and additional learning is all being recognised and valued more by employers. Your work with clubs, societies, fundraising and other activities will develop your skills and the Award will even appear on your degree transcript.

BathStudent.com/Bathaward

- Caring, leisure and other service occupations
- Sales and customer service occupations
- Elementary occupations and process, plant and machine operatives

All UK Higher Education Providers



* Source: Destinations of Leavers from Higher Education Survey 2014/15; employed UK domiciled full-time first degree graduates.

Your learning

We attract the very best academic and support staff from across the globe. Our innovative and pioneering research feeds straight into your learning, which means that when you graduate you will be at the forefront of industry knowledge.



“One of the things that I found really unexpectedly helpful was being taught by leading researchers:

everything I was learning was completely up to date. Despite being lead researchers, they actually make you feel like you are a peer and an equal.”

Gabriella Sherry,
BSc Psychology with placement

Your learning experience

We are continually working to enhance your learning experience so that you can fulfil your potential both at the University of Bath and in your future career.

You will be taught by academics who are experts in their field and your learning experience will be enriched by our internationally-engaged, research-active campus community. Academic and

professional staff are constantly developing and updating their teaching approaches, and work with students and employers to make sure that what you learn is at the cutting edge of practice, both when you are studying and when you graduate.



Find out what our students think: go.bath.ac.uk/blog-study

Bath Blogs

Accommodation

Become part of a great student community that will make you feel like the University of Bath is your home away from home.



options if you feel strongly. All accommodation prices include utility bills, internet and Wi-Fi, connection to network, and core possessions insurance.

Go online for 360 degree tours of the rooms and buildings: go.bath.ac.uk/virtual-tour

Check out go.bath.ac.uk/student-accommodation for full information.

Accommodation guarantee

All full-time first year undergraduate students are guaranteed accommodation for their first year of study as long as they have selected Bath as their firm choice and have accepted and applied for accommodation via the online system before the deadline.

Accommodation options

Here at Bath we have over 4,000 bedrooms, three-quarters of which are located on campus. We offer a broad range of room types to suit all budgets; half of our rooms are en suite. Groups are usually mixed, but you can choose all-male or all-female



Price guide

Prices are per week and include utilities, data connection and core possessions insurance cover. Prices below are from 2016-2017 and are for guidance only (subject to change).



Standard shared

£65 - £70 per week
 £2,470 - £2,660 per year
 (38 weeks contract)
 Campus life
 Eastwood
 City life
 John Wood Building

Standard

£98 per week. £3,528 per year
 (36 weeks contract)
 £98 - £117 per week
 £3,724 - £4,446 per year
 (38 weeks contract)
 Campus life
 Eastwood, Osborne House

City life
 John Wood Court,
 Carpenter House

Standard

£122 per week
 £4,636 per year
 (38 week contract)
 Campus life
 Westwood, Norwood

Catered standard

£170 per week.
 £6,210 per year
 (including £50 per week
 catering charge for 33
 weeks of 38 contract only)
 Campus life
 Brendon Court

Catered en suite

£189 - £204 per week
 £7,502 per year
 (including £50 per week
 catering charge for 33 weeks
 of 38 contract only)
 Campus life
 Polden Court

Part-catered en suite

£178 per week. £6,639 per year
 (including £25 per week
 catering charge for 33 weeks
 of 38 contract only)
 Campus life
 The Quads

En suite

£153 per week. £5,814 per year
 (38 week contract)
 Campus life
 Marlborough Court and
 Solsbury Court

En suite

£150 per week - £158 per week
 £5,700 - £6,004 per year
 (38 week contract)
 Campus life
 Woodland Court
 City life
 John Wood Building



Find out what our students
 think: [go.bath.ac.uk/blog-
 accommodation](http://go.bath.ac.uk/blog-accommodation)

Bath Blogs

Our campus

Bath is a campus university occupying a beautiful, green and leafy hilltop site overlooking the city of Bath.



“The facilities at the University of Bath are great! Almost everything you could ever want is within five minutes walking distance when you live on campus.”

Ruth Hanson, BSc Psychology

Our students enjoy excellent facilities for learning, accommodation and leisure on campus and we are continually improving current spaces and investing in new buildings. We are one of the safest campus sites in the UK and the first university in the country to win a national police-approved security award.

In addition to our 24 hour, 365 day a year library; world-class

Sports Training Village; The Edge, our home for visual arts, theatre, dance and music; and our award winning Students' Union, we also have: supermarkets, medical and dental centres, laundry, post office, banks, coffee shops, eateries, bars, pubs and a club.

From campus you can hop on the bus (running 24 hours a day during term time) and explore the city centre.





"At the Students' Union, we provide you with the best opportunities and support to help you make the most of your time here. There are over 200 student-led groups for you to choose from. Through getting involved, you'll create friendships, develop skills and gain experiences that you will benefit from for years to come."

Lucy Woodcock, Students' Union President 2016-17

Your Students' Union

Student Voice

Students are able to take on positions in the SU that allow them to represent their peers on a range of issues from those affecting their academic life right through to national campaigns.

Advice and support

The SU provides confidential and independent support when you need it. This includes advice on housing, personal issues, health and academic appeals.

These include diversity and support groups including LGBT+ and the International Students' Association.

Development and employability

The SU offers training and other opportunities to develop your skills and experience that will be valued by employers. This includes support with finding part time work and formal accreditation.



Sport

We offer a fantastic range of sports here at Bath for the recreational and elite athlete alike. **Our outstanding facilities and expertise** are open to all and we will work with you to achieve your goals.



“One of the main attractions about the University of Bath as a student-athlete is it’s all on one campus.

I can go from training in the morning straight to lectures or the library and start working towards my degree, then head back to my training. I would really recommend it to all student-athletes.”

Joe Choong, BSc Mathematics
Ivor Powell Sporting Scholar
Represented Team GB in modern pentathlon at the Rio 2016 Olympic Games

- The £30 million Sports Training Village is the hub of sport at the University, offering world leading facilities and expertise
- We offer recreational opportunities for all members of the University to enjoy sport and exercise, regardless of ability
- Students have access to a wide range of sport by activating their free sports pass.*
- A range of Sports Scholarships are available to support student athletes
- We provide one of the leading high performance environments in Europe





Find out what our students think: go.bath.ac.uk/blog-sport

Bath Blogs



Students' Union sports*

Students' Union Sport offers a wide variety of sport from University, inter-halls and interdepartmental competitions, through to social and recreational activities.

For a full list of clubs visit: BathStudent.com/sport

- Athletics
- Rowing
- American Football
- Hockey
- Lacrosse
- Riding
- Rugby
- Basketball
- Boxing
- Cheerleading
- Dodgeball
- Fencing
- Floorball
- Gymnastics
- Handball
- Latin and Ballroom Dance
- Netball
- Trampoline
- Volleyball
- Martial arts
- Archery
- Motorsports
- Mountaineering
- Shooting
- Snowsports
- Racket sports
- Watersports

*A fee may be charged for the use of some facilities and will be charged for membership of sports clubs. Please see our website for details.

Arts

The Edge brings new, exciting and thought-provoking dance, music, theatre and visual arts right to your doorstep.

Here you'll find many opportunities to participate in arts and creative practice using top-class facilities. Classes are available in drawing, painting, dancing and music production; instruments are available to loan and receive tuition in; rooms are available for rehearsal*. Plus there's a world-class public programme of arts presentations to experience including exhibitions and performance*.

Edge Arts also offers a range of arts development platforms to facilitate excellence in creative ambition. Arts Scholarships, bursaries and awards are offered to support the best creative ideas and proposals.

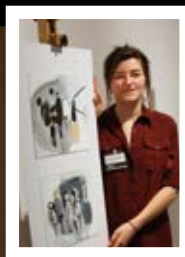
www.theedgearts.co.uk

*A fee will be charged for some activities and events and the use of some facilities. Please see our website for details.



Brand new state-of-the-art facilities including soundproof music practise rooms, a purpose-built dance studio, three large galleries, theatre, performance studio and much more.





“The Edge provides a great hub for arts on campus. For me, it’s really provided a platform to continue practising alongside my degree, by taking part in their classes and impressive exhibitions.”

Isobel Tenison-Collins,
BSc Natural Sciences with
Industrial Placement



Find out what our students think: go.bath.ac.uk/blog-arts

Bath Blogs

International

We have a lively international community and welcome the cultural diversity our international students bring to campus life. Over 100 nationalities are represented among our 3,500 international students.



Masters students

The Home Office has selected Bath to take part in the Tier 4 pilot scheme, with just three other British universities: Cambridge, Imperial and Oxford. This scheme gives one-year master's students the opportunity to benefit from a streamlined visa application process. Being part of the pilot also means that students will be granted six months' leave, rather than the usual four months, to remain in the UK after completing their studies.

Email: Tier4@bath.ac.uk

Before you leave

We will communicate with you regularly, provide you with essential information to help plan for your journey to Bath, and advise you about life in the UK. You will need to submit your online application for accommodation which can be done once you have accepted an offer to study at the University.

Tier 4 visas

Many international students will require a Tier 4 visa to study in the UK. Our Student Immigration Service is here to advise on your Tier 4 visa application and to support you with your visa conditions when you are here. For more information visit: go.bath.ac.uk/visa

When you arrive

We can pick you up by bus from London Heathrow Airport and settle you into University accommodation. You can live, eat, socialise, shop, bank and access medical facilities all on campus. We also organise a welcome

programme of events just for you including information sessions, tours of the campus and the city, and social events, which are a great way to get to know people.

For more details visit:

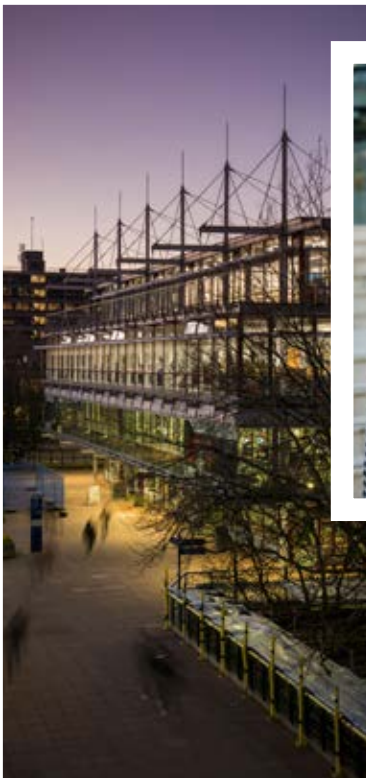
**[go.bath.ac.uk/
international-students](http://go.bath.ac.uk/international-students)**

Improving your English

If English is not your first language and you need to improve your language skills to reach the English language entry requirements of your degree course, then you may be eligible to be considered for one of our intensive Pre-sessional courses.

These are designed to help international students prepare for study on undergraduate and postgraduate courses and adjust more quickly to living and studying in the UK.

You can find further information, including dates and fees, here: **[go.bath.ac.uk/
international-students](http://go.bath.ac.uk/international-students)**



Find out what our students think: **go.bath.ac.uk/blog-international**

Bath Blogs

City of Bath



“Bath is such a beautiful place. Persuading friends to visit me at university has been easy.”

Karolina Wozniak,
BSc Psychology



Bath is one of the most interesting, cosmopolitan and vibrant cities in the UK. Set in the rolling green hills of South West England, it's famous for its natural hot springs and Georgian architecture. In fact, Bath is so special the city has been designated a UNESCO World Heritage site. Bath is not only special because of its history; it's a great place to live, learn and work.



History and culture

Bath's striking architecture, Roman Baths, medieval abbey, and world-famous sweeping crescents make it one of the most remarkable cities in Europe.

Shopping and nightlife

Bath is a lively city offering some of the best shopping and cultural attractions outside London. The city has many independent retailers, a shopping centre, theatres, cinemas, restaurants, cafes and museums. Students make up over a quarter of the city's population and Bath has a vibrant, student-focused nightlife including a variety of pubs, clubs and bars.

Beyond Bath

For those who want to explore a larger city, Bristol is about 15 minutes away by train, offering a similarly lively restaurant, bar and music scene. London is approximately 90 minutes from Bath by train, and for those seeking quieter retreats, Bath is surrounded by beautiful countryside.



Discover More

The Bath Leap List collects our students' favourite ideas and activities for enjoying the city: go.bath.ac.uk/leap-list



...Get involved!



Find out what our students think: go.bath.ac.uk/blog-accommodation

Bath Blogs

Supporting you

Coming to university can be a big change. Though this is exciting, you may find that you need support along the way to ensure that your transition to university is smooth and enjoyable.



Wellbeing service

On campus we have professionally trained Wellbeing Advisers who work from 9am to 10pm daily*, and a team of postgraduate Residential Tutors who live in our accommodation and provide welfare support.

go.bath.ac.uk/services-wellbeing

Money advice

The Student Money Advice team provides a confidential service on all aspects of student finance, including hardship funding, budgeting and practical tips.

Email: studentmoneyadvice@bath.ac.uk

Disability advice

The Disability Service provides advice and support for students with a disability or Specific Learning Difficulty: go.bath.ac.uk/services-disability

Peer mentoring

As well as your tutors, you will have a Peer Mentor assigned



to you before you get here. They are current students who are here to help you settle into life at university.

Other services offered by the University include:

University Medical and Dental Centres
Counselling and Mental Health
Childcare (campus nursery)
Multi Faith Chaplaincy Centre

For more information on any of our services visit:

go.bath.ac.uk/services-students

Nightline

Nightline is a confidential listening, support and practical information service run by trained students, for students at the University of Bath. You can talk to them about anything – big or small – in confidence, remaining fully anonymous.

They are open 8pm - 8am every night of the semester.

BathStudent.com/nightline

*Hours may vary during weekends and University vacation. Please visit our website for further information.



Find out what our students think: go.bath.ac.uk/blog-support

Bath Blogs

Funding your studies

At the University of Bath we are committed to attracting the best and brightest students. We want you to benefit from everything a Bath education can offer, regardless of any financial constraints you may face. We are fortunate to be supported by a range of generous donors, many of whom are University alumni.

Tuition Fees 2017 entry

Home/EU/Islands (campus based courses)	£9,250 per year
Home/EU/Islands (FdSc Addictions Counselling)	£7,710 per year
Overseas (Faculty of Humanities and Social Sciences) <i>(Including BSc International Management and Modern Languages, NOT including BSc/MSci Sport and Exercise Science or BSc/MSci Physical Activity and Health)</i>	£15,200 per year
Overseas (School of Management)	£17,100 per year
Overseas (Faculty of Engineering and Design, Faculty of Science) <i>(plus BSc/MSci Sport and Exercise Science and BSc/MSci Physical Activity and Health)</i>	£19,000 per year
For details of overseas fees for FdSc Addictions Counselling, please contact admissions@bath.ac.uk	

The fees listed above are for the academic year 2017/18 only.

Tuition fee information

All students pay annual fees which cover tuition and some examination costs (re-examination fees are paid separately). Details of any course-specific costs are available on our website. Tuition fees are liable to increase annually for all University of Bath students. More information can be found here:

go.bath.ac.uk/funding



“My scholarship has allowed me to get involved with University life, rather than

worrying about earning money to pay my way. Thank you for supporting me.”

Flavia Vaz, MEng Chemical Engineering

Placement and Study Abroad fees

A reduced fee is charged during your placement year/study abroad year. Placement fees for Home/EU undergraduates are currently capped by the Government at 20% of the full-time fee for work placements and 15% of the full-time fee for study abroad or if the placement is part of the Erasmus+ scheme (for information about Erasmus+ eligibility, please contact erasmus@bath.ac.uk).

Bursaries and Scholarships

In 2017, our undergraduates will receive over £4 million in awards from the University. If you are a UK entrant from a low income family you will be automatically considered for our funding packages, based on your UK Government student loans income assessment*.

For 2017 we have:

- The Gold Scholarship programme worth up to £5,000 per year
- The Bath Bursary worth up to £3,000 per year
- Sponsored awards with corporate partners and donors worth up to £5,000 per year e.g. EY, Lloyds
- Arts scholarships
www.edgearts.org/student-development-fund
- Sports scholarships
www.teambath.com/athlete-zone/scholarship

*Additional criteria may also apply.



Awards are reviewed annually. For the latest information and eligibility criteria see: go.bath.ac.uk/funding

Planning your budget

How much you spend as a student will, to some extent, be up to you. A typical cost of living budget (after tuition fees) will be between £8,000-£9,500 per year:

Accommodation

(Rent and bills) typically around £60-£160 (without meals) depending on your choice of University accommodation. Private rented accommodation in Bath is available at a similar average price range but may exclude utilities.

Course-related costs

In addition to the cost of text books, you will also need to cover the cost of photocopying, printing and binding, and should budget at least £100 per annum for this. Some courses involve visits away from the University campus, and you may be required to pay some or all of the costs of travel, accommodation and subsistence for such trips. If undertaking a placement, you will be responsible for your own travel, accommodation and living costs, and you should also consider the financial implications if you undertake an unpaid or overseas placement.

Food

£30-£50 per week. You can save money by cooking for yourself and even sharing the costs with housemates.

Local transport

First and Wessex buses both run regular services between the campus and the city centre. Single fares are around £1.50, but you can also purchase a range of ticket options at a discount, including year passes and ten trip tickets.

Personal costs

You will need to take into consideration costs of clothes, mobile phone, laundry, trips home and any other specific items you need.

Social activities

From £10-£40 per week.

More information: go.bath.ac.uk/student-funding

Admissions

We encourage applications from motivated and well-qualified students from all backgrounds. Our admissions team consider all applications holistically and are available to guide you through the application.

How we assess your application

We look at a range of factors when making a decision on your application, including:

- your existing qualifications (such as GCSEs)
- your current studies, including the relevance of your chosen subjects
- your predicted grades
- the strength of your personal statement
- your background and educational circumstances
- evidence of achievement and potential in your academic reference
- any other relevant experiences

Our assessment is usually made solely on the basis of your UCAS application. We do not typically interview applicants, except where we need to assess suitability for a particular profession (Pharmacy and Social Work courses) or for

applicants with specific qualifications (including Access to HE Diplomas and some BTECs).

If you are a high-performing athlete applying for Sports Performance, you may be invited to trial as part of your application (depending on your sport).

Qualifications

We accept a wide range of qualifications for entry to our courses, details for a broader range of qualifications are available online:

go.bath.ac.uk/ug2018

A levels

Our typical offers range from A*AA to ABB. Many courses require specific subjects. We consider all A levels offered by UK exam boards, including international A levels, equally.



AS levels: To ensure fairness for all applicants while AS and A levels are changing across the UK, we will not take your performance in any AS levels into account in decision making.

Science Practical Endorsements

If you are studying the linear A levels in sciences offered in England, a pass in the separate Science Practical Endorsement will be a requirement of your offer for any of our courses.

EPQ and Welsh Baccalaureate

If you are taking A levels (or Cambridge Pre-Us), you may receive an alternate offer that includes your project alongside a reduced version of our typical offer. This alternate offer is in addition to the standard offer, so you can secure your place if you meet either set of requirements. Individual offers for each course are available online:

go.bath.ac.uk/ug2018

Cambridge Pre-U

Cambridge Pre-U courses are accepted in place of A levels. These are offered on the basis that D2 = A*, D3 = A and M1 = B.

BTEC

We encourage applications from students with Level 3 BTECs (both QCF and RQF) and similar technical qualifications for the majority of our courses. We will also consider a mixture of A levels with BTEC study. Individual courses may require your BTEC studies to include certain modules. Full details of our offers are available online.

International Baccalaureate

The breadth of study offered by the IB Diploma provides excellent preparation for our courses. Typical offers include either 35 or 36 points overall with requirements on HL subjects ranging from 7, 6, 6 to 6, 5, 5.

Scottish Highers

We typically require you to obtain two Advanced Highers and five Highers, with requirements typically between AA + AAAAA and AB + AAABB.

Access to HE Diploma

We welcome applicants with a relevant Access to HE Diploma for the majority of our courses, with specific course requirements available online.

English language and GCSE requirements

All applicants are required to demonstrate a suitable level of English language proficiency to enter any of our courses. You can demonstrate this with a relevant grade at GCSE, or with one of a number of other tests and qualifications in English listed on our website:

go.bath.ac.uk/english-requirements

Please check programme entry requirements before applying:
www.bath.ac.uk/study

Our courses

Accounting and Finance

Accounting and Finance

go.bath.ac.uk/acc-fin

Architecture

Architecture

go.bath.ac.uk/arch

Biosciences

Biochemistry

go.bath.ac.uk/biochem

Biology

go.bath.ac.uk/bio

Biomedical Sciences

go.bath.ac.uk/biomed-sci

Business and Management

Business Administration

go.bath.ac.uk/business-admin

International Management

go.bath.ac.uk/int-mgt

International Management and Modern Languages

go.bath.ac.uk/int-mgt-ml

(French, German and Spanish)

Management

go.bath.ac.uk/mgt

Management with Marketing

go.bath.ac.uk/mgt-marketing

Chemical Engineering

Biochemical Engineering

go.bath.ac.uk/bio-chem-eng

Chemical Engineering

go.bath.ac.uk/chem-eng

Chemistry

Chemistry

go.bath.ac.uk/chem

Chemistry for Drug Discovery

go.bath.ac.uk/chem-drug-disc

Chemistry with Education

go.bath.ac.uk/chem-edu

Chemistry with Management

go.bath.ac.uk/chem-mgt

Civil Engineering

Civil and Architectural Engineering	go.bath.ac.uk/civ-arch-eng
Civil Engineering	go.bath.ac.uk/civ-eng

Computer Science

Computer Science	go.bath.ac.uk/comp-sci
Computer Science and Mathematics	go.bath.ac.uk/comp-sci-maths
Computer Science with Business	go.bath.ac.uk/comp-sci-business

Counselling

Addictions Counselling	go.bath.ac.uk/addictions-counselling
------------------------	--

Economics

Economics	go.bath.ac.uk/econ
Economics and Mathematics	go.bath.ac.uk/econ-maths
Economics and Politics	go.bath.ac.uk/econ-pol

Education

Education with Psychology	go.bath.ac.uk/edu-psych
---------------------------	--

Electronic & Electrical Engineering

Computer Systems Engineering	go.bath.ac.uk/comp-syst-eng
Electrical and Electronic Engineering	go.bath.ac.uk/electrical-elec-eng
Electrical Power Engineering	go.bath.ac.uk/electrical-power-eng
Electronic Engineering with Space Science & Technology	go.bath.ac.uk/elec-eng-space
Electronic Systems Engineering	go.bath.ac.uk/elec-sys-eng

Integrated Mechanical and Electrical Engineering

Integrated Mechanical and Electrical Engineering	go.bath.ac.uk/int-mech-elec
--	--

International Development

International Development with Economics	go.bath.ac.uk/int-dev-econ
--	--

Languages

Modern Languages and European Studies go.bath.ac.uk/mod-lang-euro
(French, German, Spanish, and beginners (ab initio) Italian)

Mathematical Sciences

Mathematical Sciences go.bath.ac.uk/math-sci
 Mathematics go.bath.ac.uk/math
 Mathematics and Statistics go.bath.ac.uk/math-stats
 Statistics go.bath.ac.uk/statistics

Mechanical Engineering

Aerospace Engineering go.bath.ac.uk/aero-eng
 Integrated Design Engineering go.bath.ac.uk/int-design-eng
 Mechanical Engineering go.bath.ac.uk/mech-eng
 Mechanical Engineering with Manufacturing and Management go.bath.ac.uk/mech-eng-manu-mgt
 Mechanical with Automotive Engineering go.bath.ac.uk/mech-auto-eng

Natural Sciences

Natural Sciences go.bath.ac.uk/nat-sci

Pharmacy & Pharmacology

Pharmacology go.bath.ac.uk/pharmacol
 Pharmacy go.bath.ac.uk/pharm

Physics

Mathematics and Physics go.bath.ac.uk/math-phy
 Physics go.bath.ac.uk/phys
 Physics with Astrophysics go.bath.ac.uk/phys-astro

Politics

Languages and Politics go.bath.ac.uk/mod-lang-pol
(French, German, Spanish, and beginners (ab initio) Italian)
 Politics and International Relations go.bath.ac.uk/pol-int-relations
 Politics with Economics go.bath.ac.uk/pol-econ

Psychology

Psychology

go.bath.ac.uk/psych

Social Work

Social Work and Applied Social Studies

go.bath.ac.uk/soc-work-applied

Sociology and Social Policy

Social Policy

go.bath.ac.uk/soc-pol

Social Sciences

go.bath.ac.uk/soc-sci

Sociology

go.bath.ac.uk/sociology

Sociology and Social Policy

go.bath.ac.uk/socio-policy

Sport-related studies

Health and Exercise Science

go.bath.ac.uk/phys-health

Sport and Exercise Science

go.bath.ac.uk/sport-ex-sci

Sport and Social Sciences

go.bath.ac.uk/sport-soc-sci

Sports Performance

go.bath.ac.uk/sports-perf

To find out more about our courses, entry requirements and how to apply, visit:

go.bath.ac.uk/study2018

Important information that you should know:

This booklet is published for the guidance of students who wish to enter the University in the 2018-19 academic year. For the latest information about the University of Bath and its courses, see: go.bath.ac.uk/study2018

Find out more about important University terms and conditions:

go.bath.ac.uk/ugp-important-terms

Visit us



By car: M4 to Junction 18 and A46 to Bath. Follow signs for The American Museum and University. The campus is located in Claverton Down, on the east side of Bath.



Parking on campus: Visitor parking pay & display spaces are accessed via the main entrance on Claverton Down Road, turning onto Norwood Avenue. Spaces are limited. Please check the website for transport advice for Open Days.



By coach: A frequent National Express service operates from London Victoria and London Heathrow Airport to Bath.



By bus: There are a number of frequent bus services available. The U1, U18, X18, U10, 20A and 20C services all start and terminate on campus and travel through the city centre.



By air: The nearest airport is Bristol International Airport. There are also regular connections by train or coach from London Heathrow Airport



By train: Bath Spa station is on the main line between Bristol and London Paddington. It can be reached from the North and South via Bristol Temple Meads.



Can't make it to our Open Days
but still want to see campus? Visit:
go.bath.ac.uk/cannot-make-open-day

Open Days

Thursday 15 June 2017

Friday 16 June 2017

Saturday 16 September 2017

Further dates may be added, see:
www.bath.ac.uk/opendays



facebook.com/uniofbath



twitter.com/uniofbath



instagram.com/uniofbath



UNIVERSITY OF
BATH

go.bath.ac.uk/study2018



FSC
www.fsc.org

MIX
Paper from
responsible sources
FSC® C020837