



POSTGRADUATE RESEARCH STUDENT HANDBOOK

2016/17

Department of Computer Science

Contents

1. Welcome to the Faculty of Science	4
1.1 <i>The Faculty of Science Graduate School</i>	4
2. Welcome to the Department	6
2.1 <i>Department of Computer Science</i>	6
3. Department Structure	6
3.1. <i>Who's Who in the Department</i>	6
3.2 <i>Research Areas of the Department</i>	6
4. Working in the Department	7
4.1 <i>Department Website</i>	7
4.2 <i>Stationery</i>	7
4.3 <i>Mail Pigeon Holes</i>	7
4.4 <i>Technical Information</i>	7
4.5 <i>Finance</i>	8
4.6 <i>You and your Supervisors</i>	9
4.7 <i>Some differences between First and Higher Degrees</i>	10
5. Health and Safety	10
5.1 <i>Safety Policy</i>	10
5.2 <i>First Aid</i>	10
5.3 <i>Safety Contacts</i>	10
5.4 <i>Building Security</i>	11
6. Training and Seminars	11
6.1 <i>PG Skills Training</i>	11
6.2 <i>Postgraduate Seminars</i>	12
7. The PhD / EngD lifecycle	12

This handbook is available in electronic format via your Moodle (virtual learning environment) pages. The online version includes live links to information sources. If you require a copy in large font or other format please contact the Programme Administrator.

Every effort is made to ensure that the information contained within this handbook is accurate and up-to-date.

1. Welcome to the Faculty of Science



Welcome to the Faculty of Science at the University of Bath. I am delighted that you have chosen to pursue your postgraduate training with us. In some cases that means continuing from your previous studies at Bath, and you will be familiar with the campus and the staff. But for those of you electing to move to Bath from elsewhere, this will be an exciting new challenge. All of you will be embarking on a new phase in your lives and a move to a new style of thinking and learning inherent in postgraduate training; the Faculty of Science Graduate School is here to facilitate this transition. Above all, we want you all to succeed in your chosen course or research project, and that it should be an enriching and enjoyable experience. So do attend the induction events to meet the Graduate School team and to network with your peers. I look forward to meeting you all in the coming weeks.

Prof Sue Wonnacott, Associate Dean for Graduate Studies

1.1 The Faculty of Science Graduate School

There are 6 departments within the Faculty of Science – Biology and Biochemistry, Chemistry, Computer Science, Mathematical Science, Pharmacy and Pharmacology, and Physics. The Graduate School is the home for all postgraduate students engaged in research or taking taught Masters Courses within the life sciences, physical sciences and mathematics. The Faculty has several interdisciplinary Research Centres, including the Centre for Extremophile Research (CER); the Centre for Mathematical Biology (CMB), the Centre for Regenerative Medicine (CRM) and Bath Institute for Complex Systems (BICS). These Centres foster cross-discipline interactions, both within and beyond the Faculty of Science, and support interdisciplinary postgraduate training programmes.

Role of the Graduate School

The Graduate School is responsible for supporting postgraduate students throughout their lifecycle at the University, from admission, through progression stages to submission and completion. It also provides a forum for formal and informal interdisciplinary exchanges, offering both academic and social activities. Generic skills training courses are provided by the Graduate Centre via the Graduate School.

Staff in the Graduate School

Location: Wessex House 3.33

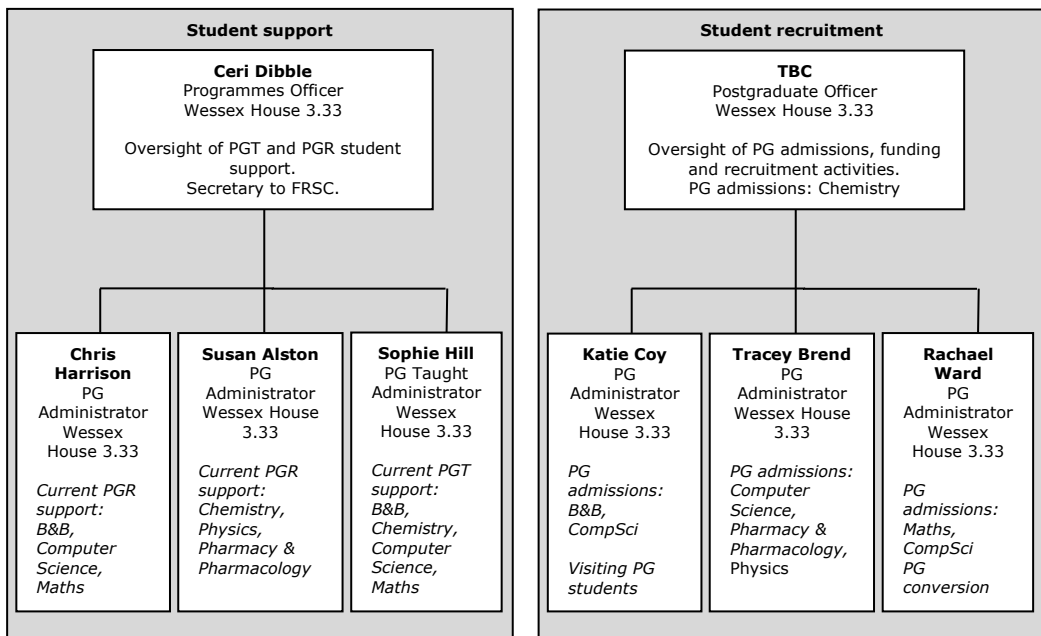
Website: <http://www.bath.ac.uk/science/graduate-school/contact/>

Email: fac-sci-gs-admin@bath.ac.uk

Tel: +44 (0)1225 38 3410 (internal ext 3410)

Professor Sue Wonnacott
Associate Dean for Graduate Studies
4 South 0.44

Simon Gane
Graduate School Manager
Wessex House 3.35



2. Welcome to the Department

2.1 Department of Computer Science

The Department began life in August 2001, emerging from the Computing Group of the Department of Mathematical Sciences. Priding itself on being research-led with strong interdisciplinary research and postgraduate teaching, the Department continues to recruit new academic staff of an extremely high calibre. The Department also attracts a highly qualified student intake and frequently appears as a top UK Computer Science Department in the published League Tables.

3. Department Structure

The Computer Science Department is led by the Head of Department, Professor Eamonn O'Neill. The Head of Department directs all aspects of the Department, operating through a number of nominated role-holders and through the deliberations of a number of committees.

3.1. Who's Who in the Department

See <http://www.bath.ac.uk/comp-sci/contacts> for a full list of Department staff. Some contacts most relevant to PG students are:

Head of Department	Prof Eamonn O'Neill
Deputy Head of Department	Prof Guy McCusker
Director of Studies (PhD and EngD)	Dr Jim Laird
Director of Centre of Digital Entertainment (CDE)	Prof Peter M. Hall
Department Coordinators	Dilly Brownlow Amanda Lester
Computer Systems Manager	Mark Cahill

3.2 Research Areas of the Department

The Department prides itself on a range of interdisciplinary research with a strong theoretical basis. Our work is concerned with conceptual issues in computer science ranging from mathematical foundations through visual and cognitive processes to media technology, human-centred design and collaborative systems. Our academic staff have various disciplinary backgrounds and collaborate widely with researchers in other disciplines

(including Engineering, Mathematics and Psychology) both in Bath and elsewhere.

Although there are many connections between the themes, our main research themes are:

- Intelligent Systems
- Human-Computer Interaction
- Mathematical Foundations
- Visual Computing

4. Working in the Department

4.1 Department Website

Please regularly refer to the Department webpages as these contain the most recent and continually updated sources of information:
<http://www.bath.ac.uk/comp-sci>

4.2 Stationery

The stationery supplies in the Department Office are available for your use, free of charge.

4.3 Mail Pigeon Holes

Postgraduate pigeon holes are located in 1W 2.54. Your post will be put there if addressed to you, giving the Department's name and the University address. The pigeonholes are also the delivery point for internal post. It is important that you check your pigeonhole on a regular basis, including vacations. Deliveries of packages are taken by the Office staff, and will need to be signed for in the Deliveries Book.

4.4 Technical Information

Within the Department, most computers are on the Departmental Network. This is looked after by support staff within the Department, and it is to them you should report any problems in the first instance. Computer Support (Department Office) will provide you with a username and password for the Computer Science network.

4.5 Finance

Financial matters are dealt with by the Faculty Science Finance Office located in Wessex House 3.50A.

Training Support Fund

Your supervisor may have access to a Training Support Fund (TSF) to support your research. With their approval, this can be used to purchase books, equipment, computing, travel to conferences, plus other expenditure that your supervisor believes will benefit your work. The amount available in this fund varies considerably depending on the source of your funding, and the programme of study you are on. Please check with your supervisor regarding arrangements for this.

Purchasing Travel

Although you are able to purchase travel tickets yourself and claim the costs back with a receipt, the University can buy these tickets upfront on your behalf. This is charged directly to the University. The University's travel agent, Ian Allan Travel, is available to postgraduate students to book their own journeys and accommodation online (see uob.ianallantravel.com to register). You will need to know your project code, so if you don't know this, please ask your supervisor.

Conference fees and associated costs can be arranged through the Faculty Finance Office (fac-sci-finance-admin@bath.ac.uk). Please check with your supervisor before making any purchases for travel.

Expense Claims

The process for claiming back research expenses you have paid yourself is the same for postgraduate students as for staff. This is done with the Agresso system online at <https://agresso.bath.ac.uk>. If you do not have access to Agresso, or require some help completing your claim, please speak to the BUCS helpdesk in the Library. Agresso web expenses enables you to enter the costs online and print out a summary to which you attach your receipts and hand in to the Faculty of Science Finance Office in Wessex House 3.50. Please check with your supervisor before claiming any expenses.

Student Maintenance Payment (Stipend)

If your study is funded from a Studentship (i.e. URS, ORS, DTG) you will most likely be receiving a quarterly payment for living costs during your degree. This is not applicable for self-funded students. Maintenance is paid directly to your

bank account in October, January, April and July. Please be aware though, that this payment will stop for periods of suspense, and status changes from full or part time study (i.e. Writing-Up, Thesis Submitted etc.) Any questions about maintenance can be directed to the Student Finance Office (stufin-stipends@rt.bath.ac.uk).

4.6 You and your Supervisors

You should maintain close contact with your lead supervisor throughout your career as a research student. He/she will establish the directions of your research and will ensure that you receive the correct training in the different specialised techniques that are required and in the material that forms the background to your research. He/she will also arrange for the facilities necessary for your research to be available. You will also be assigned a second supervisor. The second supervisor may be closely involved in the supervision of your research, or have a less formal, pastoral, role.

Research is increasingly a strongly collaborative activity and you should make sure that you work closely not only with your supervisor but also with other members of the research group. They, and other students and staff in the Department, can often provide you with specialised knowledge or advice that can prove invaluable. Make sure, too, that you share *your* experience with others: this means learning to communicate your ideas well.

These are a few suggestions for students to consider:

- Full-time students are advised to meet their lead supervisor on a *formal* basis for supervision at least once a fortnight (it is expected that there will also be more frequent informal contact).
- Part-time students are advised to meet their supervisor on a formal basis for supervision about three times a semester.
- It is the responsibility of students to arrange meetings with their supervisors.
- The expertise of other staff is also available to all students, but again the student is responsible for making contact with the appropriate member of staff.
- Students must be prepared to go out and seek help and advice. They should not rely on other people approaching them.
- Any problems that arise that cannot be solved by direct student – supervisor discussion should be brought initially to the Director of Postgraduate Studies, who may refer the matter to the Head of Department.

4.7 Some differences between First and Higher Degrees

The nature of study for higher degrees by research is very different from that for first degrees. In undergraduate courses, students' activities are very well defined, with comprehensively timetabled formal commitments.

Postgraduate studies are far less structured and consequently students have a much greater responsibility for organisation of their work and for time management.

5. Health and Safety

5.1 Safety Policy

All members of the Department have a responsibility for safety. As a Department we have a wide range of activities which if not carried out properly could pose safety risks. Therefore it is important that everyone is safety conscious. Although we have safety procedures in place, designed to pre-empt problems, we do depend on everyone being alert to these risks and bringing to the attention of colleagues any safety matters they are concerned about.

If you have visitors in the department, you should be responsible for their general safety and evacuation in case of an emergency.

Visitors with mobility issues should inform their host of their needs or requirements prior to arrival. If children are brought on to the campus they should be under constant supervision. Children should not be brought into the Department unless absolutely necessary. If they are in the Department they must not enter the laboratories.

5.2 First Aid

Contact the University Health and Safety Advisors
Tel extension 4751 or 6491

5.3 Safety Contacts

Dr John Power is in charge of Health and Safety within the Department.

5.4 Building Security

Please ensure that all restricted access doors are closed behind you.

6. Training and Seminars

6.1 PG Skills Training

In addition to the specialised training that you will need for your particular project, the University and Department also provide training in a number of more generic skills. There are also external training courses, operated for example by EPSRC.

At the end of your postgraduate studies you will be expert in a highly specialised field, but to be successful in your future career a number of 'generic skills' are required. Developing generic skills will help to make you a more effective researcher, produce better research, be more aware of your skills, make informed career choices and be more employable. Such skills are provided by the Researcher Development Unit <http://www.bath.ac.uk/learningandteaching/rdu/>

Generic skills will be developed in the normal course of your studies, and by attendance at some of the courses offered by the University's PG Skills Programme. An important first step in developing generic skills is to carry out a self-assessment of your strengths and weaknesses, and for you to develop a plan to strengthen the weaker areas. It is very useful to think about how the 'generic' skills are embedded in your everyday work, and to record these in the training log too.

You should NOT attempt to attend everything in the first few months. Instead, discuss your priorities with your supervisor, and determine the development activities that you need to do now for the next 6-12 months of your project, and also to prepare you for your future career. You should be planning and reviewing your development all the way through your research project, and discussing this regularly with your supervisor.

The University PG Skills Programme runs training sessions throughout the year that address all aspects of the Joint Statement of Skills Training. These courses are free to research students. To browse courses and book online, see: <http://www.bath.ac.uk/learningandteaching/rdu/courses/pgskills/index.html>

The PG Skills Programme includes sessions delivered by Computing Services and the Library. However, you may also wish to visit their websites to look for other opportunities they may offer.

External activities

A range of courses are also run on a national level by organisations such as “Vitae” to support the personal development and teamwork skills of postgraduate schools. For details, see the link at the PG Skills Homepage. Other opportunities may also be offered by specific funding bodies. You should take the initiative in finding such courses and you should discuss possible funding with your supervisor.

6.2 Postgraduate Seminars

Each of the research groups maintains their own seminar series, and there is a monthly Departmental Seminar, at which postgraduates, members of staff and guest speakers take it in turn to present to the Department. This is a great opportunity to receive feedback on your research and to practice your presentation skills and regular attendance is expected. Details of seminars will be communicated by email and via the web site <http://www.bath.ac.uk/compsci/research/seminars/index.php>

7. The PhD / EngD lifecycle

The diagram below illustrates the typical lifecycle for standard PhD or integrated PhD/EngD students and includes details of the key progression milestones and when they occur. Further details about these progression milestones can be found in the *University Handbook for Research Students*, which will be included in your welcome pack.

The PhD/EngD lifecycle

