



#BelongatBath



Undergraduate
Prospectus 2023



UNIVERSITY OF
BATH

Contents

10	Belonging at Bath
18	Be inspired to learn
26	Be ready for your career
	Placements
	Studying abroad
	Careers advice
	Our graduates in the workplace
34	Be at home
	Campus
	Accommodation
	Living in Bath
48	Be supported
	Support from students
	Support from staff
	Financial support
58	Be part of our student community
60	Be active
66	Be creative
70	Protecting our environment
72	Joining us as an international student
74	International Foundation Year
76	Getting into Bath
82	Tuition fees
<hr/>	
84	Our courses
<hr/>	
138	Experience the University
141	Index

TOP 10 IN 3 NATIONAL LEAGUE TABLES **2022**



Welcome to the University of Bath

Thank you for your interest in our University and for reading this prospectus. On behalf of the University of Bath, it is my great pleasure to invite you to consider studying with us and to join our innovative, enterprising and internationally diverse community.

Our aim at Bath is to inspire our students through challenging and stimulating courses that reflect the most up-to-date research and explore today's most pressing issues. We'll look to enrich you intellectually, grow your confidence, and prepare you for your career.

Bath is known for a superb student experience and a supportive campus community, attributes we have sought to strengthen since the onset of the COVID-19 pandemic. Throughout this challenging period, student performance has continued to be excellent, with students achieving high exam grades and continuing to excel at national and international level in a wide range of scholastic and extra-curricular activities.

Our innovative approach to your education combines in-person learning on campus, online elements, and structured independent study; all elements are carefully designed to meet the needs of each course. Ensuring that learning is worked through in practice is a key feature of study at Bath, and you'll have the opportunity to benefit from real-world experience through our renowned placements scheme with extensive links to leading organisations.

Our vibrant campus, right on the edge of Bath, offers a fantastic range of sporting, arts, social, and cultural opportunities. And the city itself, with its striking architecture and melding of cultures, is the UK's only entire city on UNESCO's World Heritage list. It is a wonderful place to live and to study.

The qualities of resilience and generosity which have been highlighted throughout the pandemic contribute to a strong sense of community and excellent support, both academic and pastoral, which will help you, as a student at Bath, to fulfil your potential, whatever your personal or intellectual interests and ambition.

Beyond this prospectus, there are many ways to experience our community. We are planning both on-campus and virtual Open Days during 2022 so you can chat directly to our staff and students about life at Bath. There is also a wealth of information on our website, including student blogs and videos.

We look forward to doing all that we can to support you in your future learning.

With warm good wishes,

Professor Ian White DL FREng
Vice-Chancellor and President



Ranked 6th

for graduate prospects in
the Complete University
Guide 2022



Ranked 9th

best university in
the UK in
The Times and The Sunday
Times Good University
Guide 2022



Ranked 10th

best university in
the UK in the
Complete University
Guide 2022



Ranked 8th

best university in
the UK in the Guardian
University Guide 2022



Ranked 4th

in the UK in The Times
Higher Education Student
Experience Survey 2018



86%

for overall student
satisfaction in the
National Student
Survey 2021*



*1st in England & 2nd in the UK when comparing
institutions listed in the Guardian University Guide

Top 10

16 of our 26 subjects are
ranked in the top ten in the
Complete University
Guide 2022*

*Marketing (1st), Architecture (2nd),
Manufacturing & Production Engineering (3rd),
Sociology (3rd), Sport Science (3rd),
Psychology (4th), Social Policy (4th),
Aeronautical & Aerospace Engineering (5th),
Business & Management Studies (5th),
Accounting & Finance (6th), Civil Engineering (6th),
Mechanical Engineering (6th), Politics (7th),
Chemical Engineering (9th), Social Work (9th),
Economics (10th)

Top 100

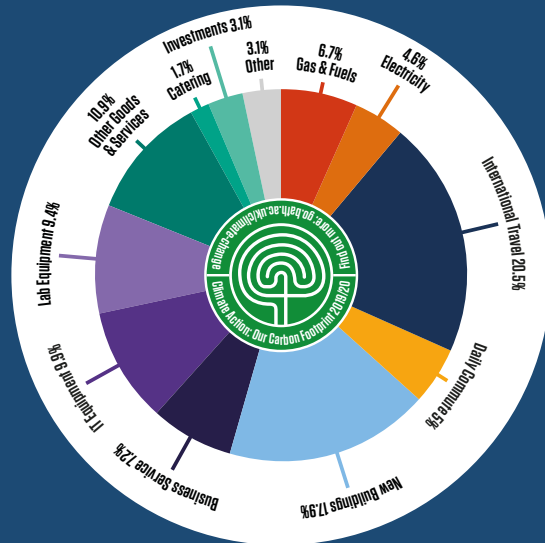
for employability
in the QS World Graduate
Employability Rankings
2022



Awarded **University of Sanctuary** in November 2020

in recognition of our commitment to being a welcoming and safe place for refugees and asylum seekers.

go.bath.ac.uk/sanctuary-23



Implemented our **Climate Action Framework Principles** in 2020

and declared a Climate Emergency to tackle climate change through research, education, and community initiatives.

go.bath.ac.uk/climate-change-23



Continued development of a **Civic University Agreement** since 2020

to develop our contribution to our local area and region.

go.bath.ac.uk/civic-university-23

#BeTheChange

Ending Harassment

Introduced the **BeTheChange anti-harassment** initiative in 2021

to continue our work to eliminate all forms of harassment in our community.

go.bath.ac.uk/be-the-change-23

Launched the **Our Shared Future** initiative in 2020

to bring together skills, knowledge, and expertise to address major challenges in the city and region.

go.bath.ac.uk/our-shared-future-23



Our University
Our Future:
Connected

Joined the **Student Minds Mental Health Charter** programme in 2021

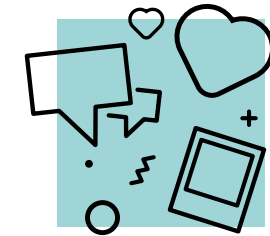
to continue our commitment to supporting the wellbeing of staff and students.

go.bath.ac.uk/student-minds-23



"It's such a welcoming place. Bath is definitely my second home."

Ammira,
BSc (Hons) Business



Belonging at Bath

Studying at Bath means being part of a lively, safe, and welcoming community. It means living in one of the UK's most beautiful cities and having access to support and guidance throughout your studies.

🔍 Visit go.bath.ac.uk/ug-study-23 to find out more about belonging at Bath.

Find your passion and make lifelong friends

Becoming a Bath student is a great opportunity to explore your interests and find new ones.

A society for everyone

Our Students' Union has over 160 student groups where you can make friends and socialise with like-minded people. You can find societies for cultural groups, the arts, ethical and political issues, and a huge range of activities.

🔍 Visit go.bath.ac.uk/su-23 to find a group dedicated to something you care about.

Getting involved in sports

As a Bath student, you can use our professional-standard sports facilities and make new friends in any of our 49 student sports clubs. There are classes and teams for all levels of ability so you can try something for the first time or play competitively in British Universities and Colleges Sport (BUCS) events.

Taking part in the arts

You can take part in arts activities at The Edge, our on-campus arts centre run by the Students' Union (The SU). You can take music lessons, dance and art classes, watch live theatre, visit the art gallery, and take advantage of wellbeing activities.

🔍 Visit go.bath.ac.uk/student-experience-23 to find out more.



Get the support you need

We want every student to feel welcome, safe and supported in our community. When you join us at Bath, you'll have access to support services suited to any issue you may face. Our community includes:

- your personal tutor, who will support you through your studies and career planning
- your peer mentor, a second or third-year student in your department who can guide you through your first year and help you find other support if you need it
- the Student Services team, who can give advice about money management, mental health issues, and disability support
- the Money Advice team, who can help you manage your money and find additional income or funding
- the Skills Centre, which provides courses, tutorials, and online resources
- the Chaplaincy, which offers support and care for people of all faiths

🔍 Visit go.bath.ac.uk/support-23 to find out more.





Create new memories in a historic city

As a UNESCO World Heritage Site with historic architecture, a vibrant culture, and year-round events, it's easy to find a place where you belong in the city of Bath. You and your friends could get involved in a local carnival, visit a museum exhibition, or explore the Bath Skyline walk. Bath's community feel is popular with students and it was ranked as the second safest university city in England and Wales in 2020¹.

Our campus is to the east of the city and has large, open, green spaces for you to relax with friends, study in the sunshine, and take part in outdoor activities. In the past decade, we've invested over £450 million in campus facilities. This includes new accommodation, academic buildings, and sports facilities like the Olympic Legacy swimming pool.



🔍 Visit go.bath.ac.uk/living-in-bath-23 to find out more.

Build the foundations of your career

We want every student to leave Bath with the foundations to start a successful career. That's why we offer great placement opportunities on all our undergraduate courses². You'll be able to use our strong links with businesses to find the best placement for you, as well as our specialist support to help you develop your interview skills and CV.

Going on a placement gives you the chance to:

- apply your academic knowledge in a workplace setting
- gain practical work experience
- make contacts for the future
- get a clear understanding of where you want your undergraduate degree to lead you

🔍 Visit go.bath.ac.uk/placements-23 to find out more.

¹Bath was ranked the second safest university town or city in England and Wales in 2020 by the Complete University Guide.

²Social Work and Applied Social Studies and Pharmacy have mandatory work-based learning as part of the degree, not year-long placements. FdSc Sport (Sports Performance) has a placement when taken with a bachelor's top-up.



“After a year at Bath, I couldn’t imagine going to university anywhere else. I’m looking forward to my next few years here.”

Kishen

BSc (Hons) Computer Science

I always knew I wanted the typical student experience with a sense of community, where everyone knew each other, and strong friendships were formed. I came to an Open Day and Bath’s campus was a blend of green space and modern buildings, and I knew I could see myself living here.

With everything on your doorstep, life is more relaxing. Going to the launderette and getting groceries is no hassle. Missing an ingredient from a recipe? A two-minute walk to the Fresh shop on campus and you’ve got a great meal tonight. Catching up with friends? Just drop a quick text and you’ll be at their door in an instant.

When I moved into halls, I met people with different facets - there were athletes, musical theatre fans, business enthusiasts, and coding maniacs. I didn’t just feel like a student at university, but a student at Bath. There is no better time to be yourself than at university.

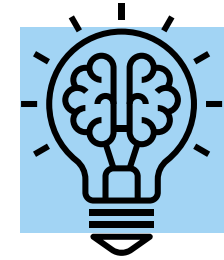
After a year at Bath, I couldn’t imagine going to university anywhere else. I’ve found friends for life and the city is a second home to me. I’m looking forward to my next few years here.



🔍 Read my student blog at: go.bath.ac.uk/kishen-blog-23

"The lecturers don't expect you to know everything as soon as you start. They are very understanding and happy to help out in any way possible."

Jinita,
BSc (Hons) International Management
and Modern Languages (Spanish)



Be inspired to learn

At Bath, we aim to offer you the best possible learning experience in an ever-changing world. We use student feedback to help us build on our teaching strengths and continue to seek to innovate our approach by harnessing the potential of new ways of learning.

Watch our video:

go.bath.ac.uk/learning-video-23

Your learning experience

Our expert teaching staff will guide you in your learning using a range of methods, including:

- lectures and tutorials
- laboratory sessions (where appropriate)
- online learning resources and activities
- problem-solving scenarios

During 2020 and 2021, we adapted our teaching to provide a mix of in-person and online learning activities to give our students the best possible learning experience.

As we look ahead to 2023 and beyond, we're building on the enhancements we've made through the COVID-19 crisis and developing new approaches to teaching, learning and assessment so that we continue to improve the experience of studying at Bath for our current and future students.

🔍 Visit go.bath.ac.uk/your-learning-23 to find out more.

Learn from the experts

Our teaching staff are experts in their subject areas, with connections in industry, professional bodies, and non-governmental organisations (NGOs) around the world. Their industrial links, research, and discoveries will mean you're taught the most up-to-date topics.

🔍 Visit go.bath.ac.uk/expert-teaching-23 to find out more.



Read our student blogs at:
go.bath.ac.uk/student-blogs-23



Your degree, your choice

Our courses are carefully designed and updated in terms of content and approach to make sure you have the key knowledge, skills, and attributes to place you in the best position to succeed in your career.

On most of our courses, you can choose from a range of optional modules as well as the core modules for the course. This flexibility allows you to specialise in your chosen path and helps you get to where you want to go after university.

🔍 Visit go.bath.ac.uk/your-degree-23 to find out more



Practical experience as part of your degree

Over 50 years ago the University of Bath was established to fuse academic thinking with practical experience. This is still at the core of what we do today.

All our undergraduate course areas offer a placement, sometimes called an internship, or study abroad option¹ and over two-thirds of our students take up this opportunity².

Going on a placement gives you the opportunity to work in a business or organisation, apply your academic knowledge, and gain practical work experience which you can use when you return to University and in your chosen career. It also gives you valuable contacts for the future and helps set you apart from other graduates.

🔍 Visit go.bath.ac.uk/placements-23 to find out more.



Read our student blogs at:
go.bath.ac.uk/student-blogs-23

Develop your skills

As a Bath student, you'll have the opportunity to develop your academic and personal skills by fitting your own development programme around your course studies. You'll have access to the 'MySkills' website, where you can sign up for online and in-person skills development sessions, including one-to-one tutorials, and find additional resources to support your studies, your employability, and your wellbeing.

The development sessions include:

- academic skills - writing effective essays and notes, applying critical thinking, and improving your understanding of maths and statistics
- digital skills - developing your digital skills to keep up with evolving technologies
- employability - recognising and developing the skills employers want and presenting them effectively
- language skills - learning or improving a language and developing intercultural awareness to support your employability
- health and wellbeing - developing ways to look after your mental health and learning how to manage your finances

🔍 Visit go.bath.ac.uk/skills-23 to find out more.



Find your favourite study space

We're continually investing in:

- teaching buildings
- informal learning spaces
- laboratories
- online teaching tools
- learning materials
- online learning platforms

Depending on your course, you'll also be able to use specialist facilities like our acoustics lab, motion capture system, and Virtual Learning Environment, which will give you access to course materials, quizzes and recorded lectures for your subject.

🔍 Visit go.bath.ac.uk/learning-facilities-23 to find out more.

The Library

Our 24-hour library, at the heart of campus, provides a variety of study spaces for group and individual work. With lots of PCs and wireless networking throughout, you'll be able to find a place to study that suits you.

There are copy, print, and scanning facilities, and you can borrow or access print books, e-books, electronic journals, specialist databases, and academic publications. Our library staff can source alternative formats of print materials and our subject librarians offer one-to-one help and support to teach you about library resources, services, and information skills.

Study spaces

If you study at Bath, you can use our informal and comfortable study spaces on campus and in the city. They're set up with tables, chairs, printers, and plenty of power sockets, so you can study by yourself or with friends.

🔍 Visit go.bath.ac.uk/study-spaces-23 to find out more.

¹ Social Work and Applied Social Studies and Pharmacy have mandatory work-based learning as part of the degree, not year-long placements. FdSc Sport (Sports Performance) has a placement when taken with a bachelor's top-up.

² Over two-thirds of Bath-based students graduated from a course with a placement or study abroad option in the 2017/18 academic year.

“Anything I could ever dream of doing with my course, any project that I want to do, the facilities are available.”

Cedric

MEng (Hons) Mechanical Engineering with Manufacturing and Management

I came here from living in Bangkok, where I was doing the International Baccalaureate, which is a very broad programme, so I studied a lot of subjects there. It was very different when I came here, studying just the two subjects that I love in my course. That was a very big difference for me.

For my course, the facilities here are top of the line. Anything I could ever dream of doing with my course, any project that I want to do, the facilities are available. I can also visit, say, the Chemical Engineering building and borrow some of their resources to do any project that I want to do, and I really like that that's available to me.

My personal tutor is in the same department as me. He can help answer any questions that I might have, and he grades my papers and tells me what I've done well and what I can improve on. If I'm struggling with any of my units, I can just show him my question and, odds are, he'll be able to help me through it and help me learn how to improve.



Watch our video:

 go.bath.ac.uk/international-video-23

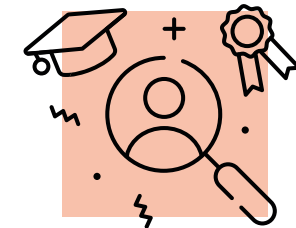
"My course is preparing me for the working world. Along with all the Careers Service and professional development programmes, I feel ready for when I graduate."

Camille,
BSc (Hons) Management



Watch our video:

go.bath.ac.uk/employability-video-23



Be ready for your career

We're ranked 6th for graduate prospects in the UK¹. This is because Bath graduates continue to be some of the most sought after in the country, with almost two-thirds of our undergraduates taking a work placement or period of study abroad as part of their course.

¹ We're ranked 6th for graduate prospects by the Complete University Guide 2022.



Placement options

As a Bath student, you can take a work placement during any of our undergraduate courses².

A placement is your chance to combine academic knowledge with hands-on employment experience. It is a fantastic way to gain experience in a real workplace, grow your professional network, and set yourself apart from other graduates. The work you do during your placement may make an impact on the world before you even graduate.

Placement opportunities at Bath are varied so you can find something to match your career plans. You could be based in the UK or overseas, working in a multinational corporation, a medium-sized business, or a start-up company. Some placements are paid so you could earn a salary while you work. There is also an opportunity to apply for funding to support overseas placements.

Specialist placement support

What makes the placements scheme at Bath stand out is the tailored support you receive from our placement teams. They are there to help you:

- find a placement
- work on your CV
- develop your interview skills

The teams in each faculty are specialists in your area of study and will provide advice from your first year onwards. While securing a role is your responsibility, they'll support you every step of the way.

🔍 Visit go.bath.ac.uk/placements-23 to find out more.

Internships and jobs

There are lots of other ways to get work experience while you study. Our Careers Service promotes internships and job opportunities throughout the year, so you can work around your studies or during the holidays.

Getting experience this way gives you a great opportunity to meet local business owners and people from Bath, so you can really become a part of the local community.

Extracurricular research projects

As a Bath student, you could take part in a Vertically Integrated Project (VIP), working with postgraduate students, researchers, and members of staff. Our VIPs often focus on addressing global issues at a local level and are a great way for you to apply research techniques to real-world problems, as well as develop your collaboration, communication, and adaptability skills.

🔍 Visit go.bath.ac.uk/vip-23 to find out more.

² *Social Work and Applied Social Studies and Pharmacy have mandatory work-based learning as part of the degree, not year-long placements. FdSc Sport (Sports Performance) has a placement when taken with a bachelor's top-up.*

Studying abroad

While studying at Bath, there are opportunities with many courses to study abroad. The University has excellent partners in a variety of countries across the globe including Europe, Australia, Asia, Latin America, Canada, or the USA.

Studying abroad is your chance to experience a different culture and make new friends while getting skills and experience that employers love. It could help you:

- improve your language skills
- build your confidence
- learn about another culture
- show your ambition and enthusiasm

You'll be supported by the University and our exchange partner institutions through your application process and while you're studying abroad. There are also opportunities to apply for funding to support your study abroad.

🔍 Visit go.bath.ac.uk/study-abroad-23 to find out more.

Careers advice

Our Careers Service is here to support you from your first year at Bath, after you graduate, and throughout your working life.

Using tailored online resources, workshops, group sessions and one-to-one appointments, they can help you:

- decide on your future career goals
- understand how to search for a job
- prepare an application, including developing your CV and cover letter
- use LinkedIn and develop an online professional presence
- prepare for interviews and other recruitment experiences

The Careers Service also holds employer events, skills development workshops, and careers fairs throughout the year to help you choose an area to work in, meet recruiters, and apply for jobs.

🔍 Visit go.bath.ac.uk/careers-service-23 to find out more.

"We can make an appointment with the Careers Officers and get them to review our CVs and cover letters."

Godfrey,
MEng (Hons) Civil Engineering

Building your skills

Whatever you plan to do after university, it's always worth learning skills to help improve your CV and your employability.

Skills support

Through our Skills Centre, you can develop skills that will help you during your studies and throughout your career, including:

- academic writing, reading, and referencing
- presentations
- digital skills
- languages
- maths and statistics

Taking a course through the Skills Centre is also a good way of meeting new people and feeling part of the community at Bath. You can even take part in our Language Exchange programme and meet international students who'll help you practise a language.

🔍 Visit go.bath.ac.uk/skills-23 to find out more.

Transferrable skills

Joining student societies is a great way to meet like-minded friends, but it can also be a way to learn and develop skills that you might need for your career.

Our Students' Union (The SU) has over 160 student groups you can join, giving you the chance to practise marketing, organise events and trips, or apply for a position on a committee. You could also start your own society or apply to help run The SU itself.

Support from our alumni

As a Bath student, you'll belong to a global community of more than 125,000 alumni, as well as around 500 remarkable honorary graduates.

The Alumni Relations team helps our graduates to stay in touch with each other and with the University. There are Bath alumni working in amazing places all around the world, so there's a wealth of experience for you to benefit from at our Get Connected networking events and through mentoring.

Investing in your future

Alumni also support our students through donations. These help to pay for some of the experiences that make Bath so special, as well as funding scholarships and awards to help exceptional students and graduates reach their full potential.

Bath graduate Nia Simpson was able to develop her final-year project into a business, thanks to a £15,000 Innovation Award donated by a fellow graduate. Nia's product, Compact Cane, is the first discreet digital white cane for people with visual impairments.

Networking opportunities

While at Bath, you can use our networking site Bath Connection to get in touch with thousands of graduates around the world.

You can ask questions about working in a particular industry or find a mentor to learn from someone who has been at Bath and wants to help you succeed.

Visit go.bath.ac.uk/bath-connection-23 to find out more.



Read our student blogs at:
go.bath.ac.uk/student-blogs-23



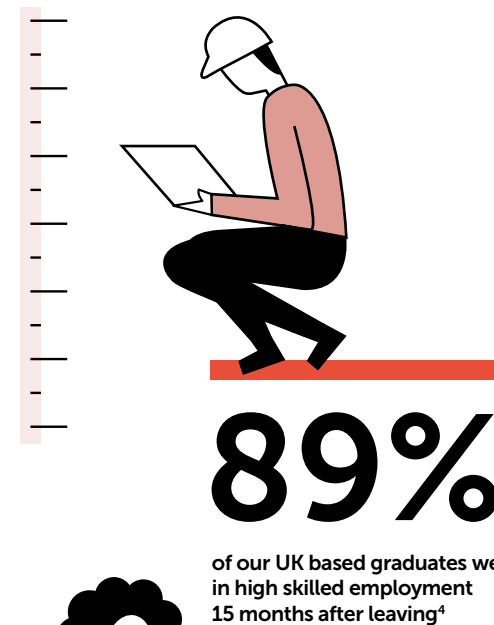
"I really love what I do – I've been able to use the knowledge I gained from the University and on placement to help change people's lives for the better. The support I received from the Innovation Award has enabled me to develop skills, such as pitching, and has helped build confidence in my business idea and myself. I definitely recommend Bath for its support for budding entrepreneurs!"

Nia,
MEng (Hons) Mechanical Engineering
2018, Founder of Compact Cane

Our graduates in the workplace

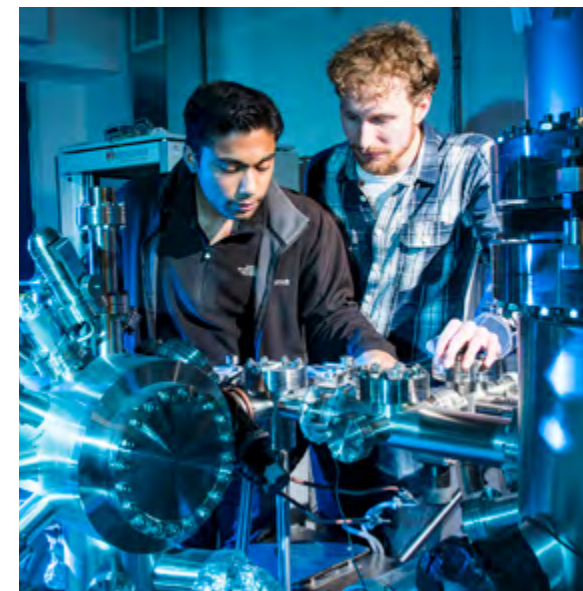
As a student at Bath, you'll be well-placed for graduate employers and recruiters to offer you a great start to your career.

We were one of the 20 universities most targeted by Britain's top graduate employers in 2020³. On top of that, 89% of our full-time UK domiciled graduates were in high-skilled employment 15 months after leaving university in 2019, compared to 72% nationally⁴.



³From The Graduate Market in 2021, produced by High Fliers Research.

⁴Data from HESA Graduate Outcomes Survey for 2018-19 leavers relating to full-time UK domiciled first-degree graduates entering work in the UK, 15 months after leaving university.





Business student, Ammira, did a placement at Sanctuary Graduates.

I chose the Business degree at Bath mainly because of its fantastic placement programme, which offers two six-month placements. Coming from a small town in Malaysia, an opportunity to work abroad doesn't come often, so given the chance I just had to grab it!

The thought of meeting new people and adapting to a foreign environment was exciting and daunting at the same time. As ecstatic as I was to start, a part of me couldn't help but feel nervous as I had a billion questions running through my mind.

During my placement, I became a lot more open-minded and was willing to accept how things were done differently. I found a place for myself at work and it helped that I had supportive colleagues who constantly guided me and made me feel included.

Now that I've completed my placement, all my questions have been answered. I now know that socialising after work on a Thursday is completely normal in the UK and that there are an unlimited number of ways to small talk about the weather!

Taking a placement was the right choice as I've grown and learnt so much from it. I started my placement questioning my capabilities, but came out so much more confident, with a whole new perspective on my graduate plans.



Psychology student, Ananya, joined CybSafe for her placement year.

At Bath, students are guided quite early on about placement applications, summer roles, and internships. In my case, we had weekly sessions covering topics like how to improve your CV and how to apply for jobs.

I decided to look for part-time roles on campus. Using the tips I had learnt in the workshops, I applied for the role of a Wellbeing Ambassador with Student Services. My CV and cover letter were reviewed and after a short interview, I got the job!

In my second year, I started looking for placement roles. After a chat with my placement officer, I was pleasantly surprised to find that most places appreciate how challenging it can be to manage work and university assignments.

At my placement interview with CybSafe, I realised how much working on campus improved my employability. I could link various experiences as a Wellbeing Ambassador to my suitability for the role of a Psychology Research Analyst. I was able to highlight how teamwork with other Ambassadors during wellbeing events helped me learn transferable skills such as coordination, multitasking, and task management.

There are plenty of ways to improve your employability at Bath. A good place to start is right here on our beautiful campus!



Computer Science student, Jay, did internships with the Civil Service and J.P. Morgan.

While studying for an undergraduate degree in Computer Science, I benefited from internships in cyber security with the Civil Service and data science with J.P. Morgan. I had been introduced to these employers through an industry networking event organised by the University, and the internships helped to inform my future career choices.

Data Science is a broad and new subject, such that institutions teach the subject differently. Bath manages to teach both the theoretical and practical elements across fundamental and cutting-edge research areas. Assessments test not just your technical skills, but also how you answer ambiguous questions that you face in industry.

Beyond my studies, I gained professional development through the University's Careers Service. They provide tailored training, market insights, networking events, CV feedback, interview practice, and more. After graduating, you can continue receiving support from the service.

With help from Bath's Careers Service and plenty of preparation, I was fortunate to be offered the perfect role as a Data Science Consultant for an international technology company.



Chemical Engineering student, Sam, did a placement at Patheon.

A placement was a big step for me as I hadn't done anything like it before, but the people at Patheon were great; they eased me into it, and I felt at home very quickly. Being an engineer in pharmaceuticals is exciting right now. So much engineering goes into just making a small pill and a small pill can make a big difference to the lives of many.

The support I received from the placements team at Bath was helpful. They gave me mock interviews and feedback which I think helped me get the job. They checked up on me as well, made sure I was being given real responsibilities and were always there if I needed advice.

Doing a placement is one of the best decisions you can make. There is so much you can learn from studying but the real-world skills come from doing. My placement taught me how a real project runs from start to finish. I was then able to use this real-world knowledge and application to continue with my studies. The skills I developed were invaluable to me.

It's amazing to think I went from studying Chemistry and Maths at A Level to a Chemical Engineering degree and a placement with one of the biggest contracting companies in the world.

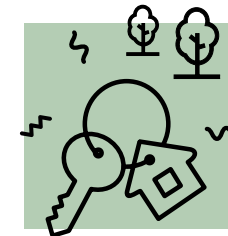
"Everything is right on your doorstep and it's just a really nice atmosphere amongst all the students and staff."

Erin,
MSci (Hons) Mathematics
and Physics



Watch our video:

go.bath.ac.uk/student-life-video-23



Be at home

Our accommodation plays a huge part in bringing together the University community. With lots of places to meet with friends, relax in green spaces, buy food and drink, and study, you're sure to find where you belong.

🔍 Visit go.bath.ac.uk/ug-study-23 to find out more about belonging at Bath.

“The good thing about our University is you’re surrounded by so many students and you don’t ever feel isolated.”


Anabel,
BSc (Hons) Politics and
International Relations

The heart of our community

At the centre of campus is the Parade, a wide walkway with access to the Library, students’ union building, and Post Office, as well as cafés, shops, and bars. From here, you don’t have to walk far to reach any of our teaching and accommodation buildings.

- Amenities
- City Centre accommodation
- Campus accommodation

360° Take a virtual tour of our campus:
go.bath.ac.uk/virtual-tour-23

 Read our student blogs at:
go.bath.ac.uk/student-blogs-23



Socialising on campus

While on campus, you can visit one of our many restaurants, bars, and cafés for a wide choice of food and drink.

If you want somewhere to hang out, you can sit in The Students' Union or make the most of our green spaces, including the beautiful lake not far from the Parade.

Study spaces

You can find places to study in the Library and throughout campus so you're never far from somewhere quiet to plug in your laptop and do some work.

Feeling safe and secure

While on campus or in University buildings in the city, you'll have the support of our security team twenty-four hours a day, seven days a week.

All security staff are trained in first aid and mental health first aid and can offer welfare support and help you with crime prevention. You'll often see our dedicated accommodation security team checking in on the residences and offering support to students.

🔍 Visit go.bath.ac.uk/security-23 to find out more.

Getting around Bath

If you want a change of scene, you can travel between campus and Bath in about twenty minutes by bike or bus.

The campus bus terminus has regular services to and from the city and there are lots of bike shelters around campus.

If you prefer to walk, there are routes into the city that give you stunning views over Bath.

🔍 Visit go.bath.ac.uk/travel-advice-23 to find out more.



"The community is really loving, inclusive, and supportive. In fact, it's impossible to walk across campus without someone asking how your day was or giving you a wave."

Erin,
MSci (Hons) Mathematics
and Physics

Your accommodation

Moving into your accommodation and meeting new friends are the start of finding your community here at Bath. You can choose to live on campus or in the city and there are options to suit different lifestyles and budgets.

🔍 Visit go.bath.ac.uk/accommodation-23 to find out all you need to know about our accommodation, including prices for the current academic year.

Our guarantee

We guarantee accommodation to all our full-time undergraduate students in their first year if:

- you receive an offer and make us your firm choice institution
- we receive your application for accommodation before the deadline

Once you've accepted Bath as your firm choice, we will let you know when and how to apply for accommodation.

🔍 Visit go.bath.ac.uk/apply-for-accommodation-23 to find out more.

Finding the right home

Our aim is to give you a home that suits your preferences and lifestyle, and we're proud to be able to offer a wide choice of accommodation.

It's important to choose the right accommodation option for you.

Each of our University accommodation options comes with the support of our security team and student living ambassadors. It's our goal to make it feel like home by creating a community that celebrates individuality within our accommodation. This can help you to create lifelong memories, and lasting relationships with your housemates.

Wherever you decide to live, you will become part of our community, creating a home where you can make lifelong memories and lasting relationships.

Subject to availability and demand, you can request accommodation that is:

- single-gender
- alcohol-free
- for mature students only
- quiet
- for families

Supporting you every step of the way

We're here to help you to settle in to University life as quickly and easily as possible. Our student living ambassadors will be here to welcome you into your new home, and to support overall wellbeing and healthy living within University accommodation through events, activities and relationship support.



Living on campus

If you want to be at the heart of the student community, you can apply for accommodation on campus which is just a few minutes' walk away from the Library, sports facilities, and the Students' Union.

Most of our first-year students live on campus in houses or flats with bedrooms grouped around communal kitchens or social spaces.

Living in the city

If you'd prefer to feel part of the city, you can choose from our accommodation options in the city centre. They're close to shops, cafés, restaurants, bars, pubs, and other attractions. They're also near to the railway and bus stations, making it easy to travel to campus and beyond.



Eat and Drink credit

You can apply to live in accommodation that comes with Eat and Drink credit. This pre-paid amount is added to your library card, which you can scan at the tills in our food and drink outlets on campus.

Alternatively, you can choose accommodation without Eat and Drink credit. All accommodation options include a communal kitchen, where you can cook for yourself or with your flatmates.

Your accommodation options

On campus with Eat and Drink credit

Brendon Court
Polden Court
The Quads

On campus without Eat and Drink credit

Eastwood
Marlborough Court and Solsbury Court
Norwood House
Osborne House
Polden
Westwood
Woodland Court

Off campus (city centre)

Carpenter House
Green Park House
John Wood Building
John Wood Court
Thornbank Gardens

🔍 Visit go.bath.ac.uk/accommodation-23 to find out about each of the accommodation options.

Accommodation price ranges (September 2021 to June 2022)

Room with private shower and toilet:

£164 to £220 a week or £6,650 to £8,360 a year

Room with shared shower and toilet:

£74 to £145 a week or £2,812 to £7,169 a year

Price ranges shown are for the 2021/2022 academic year and include both self-catered options and options that include Eat and Drink credit. See page 54 for more information on funding your studies

🔍 To see the prices for specific accommodation for the current academic year, visit go.bath.ac.uk/accommodation-prices-23



"In student accommodation, I've met so many people with different stories to tell and had great fun at our themed nights and even in casual chats in the lift."

Kishen,
BSc (Hons) Computer Science



Living in Bath as a student

The city of Bath is a lively, friendly, and historic city surrounded by beautiful countryside and well connected to the rest of the country.

Visit go.bath.ac.uk/living-in-bath-23 to find out more about living in Bath as a student.



Students and the city

Belonging at Bath means being part of life on campus but it's also about finding your place in the city. The University works closely with the local council and community to make Bath a great place to live and many of our students stay in Bath after they graduate.

As a student at Bath, you can get involved in the life of the city, taking part in events like the Bath Carnival or helping the community through our student volunteer groups.

A safe city

Bath has a friendly community atmosphere and was ranked the second safest university city in England and Wales¹.

Our security team works with the local emergency services to make sure our students and the local community are kept safe.



Read our student blogs at:
go.bath.ac.uk/student-blogs-23

¹Bath was ranked the second safest university town or city in England and Wales in 2020 by the Complete University Guide.

Social life

When you want to go out for a meal with friends, Bath has plenty of restaurants and cafés to choose from, many of which offer student discounts. You'll find many well-known chains in the city, as well as independent places for something a bit different. If you're looking for bars, pubs, and clubs, there's a great selection throughout the city ranging from cosy and quiet to late night clubs.

Bath also has three cinemas and three theatres, including the Theatre Royal where you can watch West End plays. There are also cultural events throughout the year which have previously included:

- The Bath Festival, a ten-day multi-arts event
- The Film Festival
- Comedy Festival
- Fringe Festival

Shopping

Bath has a unique mix of luxury, high-street, and independent shops so you should always be able to find what you're looking for. You can browse well-known shops or explore the picturesque alleyways and side streets for independent artisan gems.

Enjoy the outdoors

There are lots of outdoor spaces to relax in the city, including squares with curbside cafés and leafy parks and gardens. If you like to stay active, the city and surrounding countryside are perfect for walking, running, and cycling, with access to local National Cycle Network routes to help you explore the area with friends.

There are also lots of places to go swimming, both indoors and in the wild, and you can hire a rowing boat, paddleboard, canoe, or punt on the River Avon.

Experience art and culture

While studying at Bath, you and your friends can immerse yourselves in arts and culture in the city. There are lots of museums, galleries, and historic sites to explore, including the ancient Roman Baths and Georgian streets filled with stunning architecture.

"One of the reasons I picked Bath was because of the city. Everyone is so friendly and welcoming, and it is beautiful too."

Anabel,
BSc (Hons) Politics and
International Relations



Business in Bath

There's a thriving local economy in Bath, with businesses offering job opportunities for students and graduates. As a student here, you'll have the chance to find work in any area that suits you, including engineering, technology, retail, or marketing.

Beyond Bath

Bath is a gateway to the beautiful South West and beyond and it's easy to get out and explore from the train and coach stations in the city centre.

You could visit the wild Jurassic coastline of Dorset and Devon, surf in Cornwall, or visit nearby towns and cities like Bristol or Cardiff. If you want to travel further, you can get direct trains and coaches to London, Birmingham, and Heathrow Airport.

“ One of the good things about the campus is the lake. We often go down there to see the ducks, which is a nice way to end the day.”

Jinita

BSc (Hons) International Management and Modern Languages (Spanish)

A typical day for me starts with a morning filled with lectures and seminars, then I usually go to the kitchen to make myself some lunch and catch up with my flat mates. This communal space is really nice for socialising.

I like to get some fresh air during the day in between lectures. I either walk to Sham Castle, which is a ten-minute walk from campus, or I walk into town to do some shopping and get a coffee from one of Bath's many independent coffee shops.

It's important to have some time to relax, whether that's baking, watching TV, or chatting with friends. After a long day of work, I usually cook dinner then Facetime my friends and family back home.

One of the good things about the campus is the lake. We often go down there to see the ducks and feed them some duck-friendly food, which is a nice way to end the day.



Read my student blog at: go.bath.ac.uk/jinita-blog-23

"There are many ways that students can ask for help, including your lecturers, peers, or even the Skills Centre if you need more specific help."

Godfrey,
MEng (Hons) Civil Engineering



Be supported

A big part of belonging at Bath is feeling supported throughout your studies. By coming to Bath, you'll be part of a community that looks out for each other, and you'll have access to the support services you need to make the most of your university experience.

Watch our video:

 go.bath.ac.uk/support-video-23



Support from students

If you'd like to talk to another student, The SU runs a number of schemes that can help you find support.

Your peer mentor

If you need to talk to someone about what you are going through as a new student, you can speak to your peer mentor. Your peer mentor will be a current student on a similar course to yours, who has already been through their first year at Bath. They'll be able to guide you through any problems you have or suggest other people to talk to if you need specific support.

Someone to listen

During your transition to university, there might be times where you just need someone to listen to what's on your mind. The SU runs Nightline, which offers confidential listening, support, and practical information for students, from students. You can talk to them about anything, big or small, in confidence, remaining fully anonymous. They won't judge you or tell you what to do. They'll simply listen.

Visit go.bath.ac.uk/su-23 to see all the ways The SU can support you.



Support from staff

If you'd prefer to talk to a member of staff, there are lots of people you can turn to. The Student Services team provides support and guidance, including therapy and mental health, disability support, money management, and international student advice.

Visit go.bath.ac.uk/student-services-23 to find out more.

Health and wellbeing services

Our Wellbeing Advisors are here 365 days a year to help with anything that's on your mind, including homesickness, bereavement, problems in relationships, loneliness, and mental health problems.

If you feel stressed, anxious, or depressed, you can get free and confidential help and support from the Therapeutic Services & Mental Health team.

Our confidential 'Talk Now' service is also open 24-hours a day, throughout the year, for immediate advice and support as well as counselling in English and other languages. It is accessible from around the world, including during holidays and while you are on placement.

Medical and dental services

The Medical Centre provides NHS services, including doctor's appointments and prescriptions. The Dental Centre offers NHS and private treatment.

Money advice

We don't want money worries to affect your student experience, so if you need money management advice, hardship funding or help with sourcing additional income, you can speak to the Money Advice Service.

Visit go.bath.ac.uk/money-advice-23 to find out more.

See page 54 for more information on funding your studies.

Disability support

Disabled students are provided with support, both through the application process and before you start, to ensure that all the necessary study support is in place for you to succeed on your course. Support is available for those with:

- mobility and sensory impairments
- specific learning difficulties
- autistic-spectrum conditions

- mental health difficulties
- long-term health conditions

Visit go.bath.ac.uk/disability-service-23 to find out more.

Other support for students

If you're estranged from your family or are a care leaver, refugee, or young adult carer, we'll put you in contact with a member of our Student Retention and Success team during your application process.

You can meet with them regularly and they'll help you get any support and advice you need, including extra financial support if possible.

For more information, visit:

Visit go.bath.ac.uk/estranged-and-care-leaver-support-23
go.bath.ac.uk/student-carer-support-23
go.bath.ac.uk/student-refugee-support-23

Faith-based support

Students who are looking for personal or spiritual advice can speak to our University Chaplains who are available on weekdays to help students of all faiths and none.

Visit go.bath.ac.uk/chaplaincy-23 to find out more.

Support for LGBTQ+ students

If you'd like to talk to someone about your sexual orientation or gender identity, the Wellbeing service offers one-to-one support, counselling, and advice for LGBTQ+ students.

Support can include advice on coming out, guidance on faith and sexuality, access to resources, and action against discrimination and harassment.

Visit go.bath.ac.uk/lgbtq-23 to find out more.

Childcare

If you have children from six months old to school entry age, you can apply for childcare at our on-campus nursery as soon as you're offered a university place.

Visit go.bath.ac.uk/nursery-23 to find out more.

For guidance about being a parent at university, visit go.bath.ac.uk/student-parents-23



Read our student blogs at:
go.bath.ac.uk/student-blogs-23

“For all those who are young carers, know that you are not alone and help is always at hand.”

Tia

BSc (Hons) Social Work and Applied Social Studies

I became a young carer just before the pandemic, in January 2020, after a close family member suffered a prolonged injury and subsequent condition. Online learning was a blessing for me as it meant that I could still take them to any appointments and help them out throughout the day, without compromising my university studies.

For all those who are young carers, being cared for, or are interested in their experiences, know that you are not alone and help is always at hand. If you and the person you care for are struggling, please do seek some kind of support. And if you are not struggling, that's okay too. Find your balance and what works for you and ride that groove. Surround yourself with positive people that are understanding and accommodating to your situation and its needs.

There is an extensive amount of support available both to Carers, Young Carers and those being cared for within the South West. The University also offers a substantial amount of support. They provide a bursary for young adult carers, as well as the possibility of receiving the University of Bath Hardship Fund.



Read my student blog at: go.bath.ac.uk/tia-blog-23

Financial support

We want to make sure that you get the financial support you need to succeed in your studies at Bath.

We offer scholarships and bursaries based on household income and academic achievement and give support and advice for other ways to fund your studies.

🔍 Visit go.bath.ac.uk/ug-funding-23 for details of all our funding opportunities.

Income-assessed scholarships and bursaries

When you apply to Bath, you could receive a scholarship or bursary based on your household income. Our current funding includes:

- the Gold Scholarship Programme, a £5,000 bursary for each year of study with activities to enhance your development and career opportunities
- the Bath Bursary, worth up to £3,000 for each year of your undergraduate studies
- income-related scholarships, worth up to £3,000 for each year of study
- applicant travel bursaries to help you get to an undergraduate interview or Applicant Visit Day
- the Accommodation Bursary, worth £1,000 towards your university accommodation costs in your first year of study
- the Placement Bursary worth up to £2,000 for courses with an unpaid placement year

Scholarships for international students

If you're an overseas student and you demonstrate outstanding academic achievement, you could be eligible for a scholarship to help pay for your tuition. Our current funding opportunities specifically for international students (including those from the EU) are:

- the Chancellor's Scholarship – a first-year tuition fee waiver worth up to £2,000
- the International Baccalaureate 50th Anniversary Scholarship – a first-year tuition fee waiver worth up to £6,000

Corporate scholarships

You may be eligible for funding worth £3,000 a year through our partnerships with businesses.

These awards are sponsored by global organisations and usually include financial support and professional opportunities. Our current partners include JP Morgan and AB InBev, but we review our awards every year and new scholarships may become available.

External scholarships

You can also apply for scholarships from organisations not affiliated with the University.

🔍 Visit go.bath.ac.uk/external-scholarships-23 for a list of funding organisations that offer undergraduate scholarships.

Sports and arts scholarships

If you're talented in the arts or sports, you could be eligible for a scholarship, including:

- various sport scholarships to help talented athletes study and train at Bath
- an Arts Scholarship worth up to £3,000 a year
- tuition awards to help pay for arts tuition or classes

Student loans

Depending on where you live, you might also be able to apply for a loan to cover the costs of your tuition.

If you live in the UK, you may be able to apply for a Tuition Fee and Maintenance Loan from the UK government. The support you can get varies between the different UK devolved nations. Visit gov.uk/get-undergraduate-student-loan for more information on the relevant student finance website.

If you're an overseas student, you may be able to apply for a loan through your own government or from private companies. Visit ukcisa.org.uk to find out about loans for studying in the UK.



Additional support

Throughout your studies, we can give you advice and help you find funding for your time at university. This could include:

- interest free short-term loans
- hardship funding
- advice on making new financial plans
- support and additional funding if you're leaving care, a Foyer resident, or estranged from your parents or a young adult carer

🔍 Visit go.bath.ac.uk/money-advice-23 to find out more.

Part-time work

Working part-time during your studies is a great way to earn extra money and can make you more employable after university. The University employs over 2,000 students in roles including:

- bartending
- café servers and baristas
- customer service roles in our shops
- Student Ambassadors

🔍 Visit thesubath.com/jobs to see what jobs are available.

“We attend networking events with staff, alumni, and people from industry. They give you the techniques to build your own network.”

Ciara

Gold Scholar, BSc (Hons) Management

I participated in one of the University's outreach programmes, which helped me get into the University as well as contributing to my application for the Gold Scholarship. As a Gold Scholar, you complete 50 hours of volunteering, and attend networking, personal development, and skill-building sessions, as well as other events.

As part of the programme, I've worked with a student from an IntoUniversity centre. Working with children is one of the best ways to learn how to teach, keep people engaged, and learn how to be patient. I hope to be a manager someday, and I want to learn how to work with people in any way I can.

I used the skills I've developed during the programme to support my application for a Women in Leadership award.

The University of Bath has an active and really involved alumni community, and the numerous connections they have are amazing. As part of the Gold Scholarship Programme, we attend networking events with staff, alumni, and people from industry. They give you the techniques to build your own network.



Read my student blog at: go.bath.ac.uk/ciara-blog-23

Be part of our student community

As a student at Bath, you'll automatically be part of our Students' Union (The SU). The SU is here to empower you, equip you, and help you have an unforgettable university experience.



A place for all students

Through The SU, you'll have opportunities to make friends, socialise, and enjoy lots of new experiences, whether that's by joining student groups, volunteering, or getting your voice heard on issues that matter to you.

The SU represents the diversity and inclusivity of our students and, as a registered charity, everything they do is run by students, for students.

Socialising through The SU

There will be lots of opportunities for you and your friends to have fun through The SU. Freshers' Week is just the beginning, and, throughout the year, you can enjoy food fairs, concerts, cultural trips, and some of the biggest student club nights in Bath.

Finding your people

While studying at Bath, you'll be able to join over 160 student groups based on interests, activities, and cultural groups. Joining one of our many groups is a great way to make friends with like-minded people and find your place in the University in an informal setting away from your academic studies.

As well as groups based on interests, activities, and culture, you can join groups that focus on diversity and support, including the:

- LGBT+ group
- Race Equality Group
- Disability Action Group
- Feminism and Gender Equality group
- Student Minds group
- Mature Students' group

Visit go.bath.ac.uk/su-groups-23 to see all our student groups.

Experience something new

For a lot of people, university is about taking opportunities and finding new things that they love. Through The SU, you can get involved in a huge variety of events and activities, including watching live sport or film screenings, playing recreational sport, taking classes in dance, art, and music, getting involved in theatre productions, and going on epic adventures on the other side of the world. Each new experience is another opportunity to meet friends and find your place at Bath.

Feeling supported

The SU has an independent Advice & Support Centre with professional advisors who offer confidential, non-judgemental support for any problems you might have during your time at Bath. There are also a number of student-led support groups who run campaigns and awareness activities. When you start your studies, you'll meet your peer mentor, a student in your department who's finished their first year and can help support you through your first year. The SU also offers academic support through peer-assisted learning.

Finding your voice

A big part of The SU's role is to represent the students and give them a voice within the University. As a student at Bath, you'll get the chance to tell The SU what matters to you and together you can form a movement for positive change on campus and beyond. Campaigns run in the past have covered local and global issues and include:

- celebrating diversity on campus during Black History Month
- improving support for student parents and carers
- raising awareness about general and local elections

Representing under-represented voices

If you want to help make sure that everyone is included in the University community, you can make a difference through the:

- Diversity & Support Executive Committee, which makes sure that diversity and support-related concerns are addressed by The SU and the University
- Liberation Network, which represents the diversity of our student body
- Anti-Racist Action Group, which gives students the opportunity to ask University senior managers about the progress being made on issues relating to racial equality

Visit go.bath.ac.uk/su-voice-23 to find out more about having your say.

Developing your skills

The SU encourages you to think ahead and plan for the future right from the start of your time at Bath. Taking on a role within a sports club or one of The SU groups is a great way to pick up transferrable skills which you can use later in life. You can find part-time jobs, volunteering opportunities, and skills training, which will help you develop new skills, meet new people, and make life-long connections.



Be active

Sports and fitness activities are a great way to make friends and balance your studies with something energetic. At Bath, you can get involved whatever your level of ability and experience, through the SU and Team Bath, joining clubs or exercise classes, working out, and trying out for teams in any sport you choose.



Join our active community

If you study at Bath, you can join one of the 49 sports clubs run by our Students' Union (The SU). Each club welcomes new members, whether you're a novice or seeking that competitive edge.

Many of the clubs hold regular social events and annual trips. They're a great way to meet new people, as well as keep fit, find your new sport, and support your fellow students when they represent Bath.

The SU also runs Bath Active, a free social sports programme with regular fitness sessions and chances to try new sports and make new friends.

🔍 Visit go.bath.ac.uk/su-sport-23 to find out about all the groups available.

Get competitive

If you're keen to compete, you can try out to represent the University in British University and College Sport (BUCS) matches.

BUCS matches take place at weekends and after lectures on Wednesdays, so you can compete without disrupting your studies and count on your friends and other students to come and support you.

If you're involved in performance sports, you could get support – including leading coaching, sports physio, and lifestyle advice – through our Team Bath performance support programmes. You could also be eligible for a Sports Scholarship.

🔍 Visit go.bath.ac.uk/athlete-zone-23 for more information about performance support programmes.

See page 54 for details of all our scholarships.





Founders Hall

Using the sports and fitness facilities

When you start at Bath, you'll be able to use the Team Bath Sports Training Village (STV) and Founders Hall to keep fit, play sports, socialise, and get training and fitness support from expert members of staff.

The facilities are open seven days a week, with many facilities free to access using the Student Sports Pass available to all students, and you can get a discount on gym membership too.

Visit go.bath.ac.uk/team-bath-23 to find out more about Team Bath and its activities and services.

"Whether you're new to a sport or at an advanced level, the University has something to offer for everyone."

Jinita,
BSc (Hons) International Management and Modern Languages (Spanish)



Team Bath Gym and Fitness Centre

200 workout stations across three zones, plus studio spaces.



Multi-purpose sports hall

2,000-seat arena with sprungwood floors for various sports.



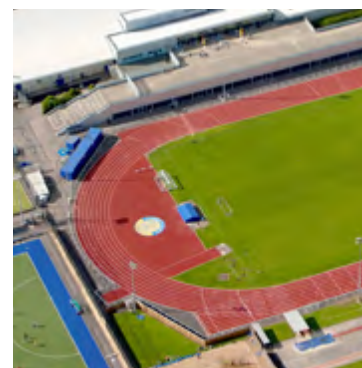
Rugby, football and cricket pitches

Grass match pitches and a 3G training area.



Olympic length swimming pool

Professional-standard 50-metre London 2012 Legacy pool.



400 metre outdoor athletics track

Floodlit track and multipurpose infield overlooked by a viewing balcony.



Indoor athletics track and hall

120 metre sprint track plus throwing and jumping facilities and squad weight-training area.



Tennis courts

Eighteen courts, indoors and outdoors, with different surfaces.



Judo dojo

300m2 dojo based on a traditional Japanese style, used for judo and exercise classes.



Indoor and outdoor shooting and laser ranges

Three ranges, one indoors and two outdoors.



Hockey pitches

Two all-weather, floodlit pitches also used for five-a-side-football.



Fencing salle

Eight indoor fencing pistes.



Physio and Sport Science Centre

Facilities for physiotherapy, sports massage and more.

Visit go.bath.ac.uk/sport-and-fitness-23 to find out more about sport at Bath.

“Joining the volleyball club was one of the best decisions I could have made. It really is one of the best ways to meet new people.”

Camille

BSc (Hons) Management

I joined the University’s volleyball club after having played for a couple of years. Members are sorted into the teams at the beginning of the year. Recreational teams can be for beginners and are mainly for fun or to develop skills. I was put into the recreational team and I had a great time playing and meeting some wonderful people.

Joining the volleyball club was one of the best decisions I could have made. It really is one of the best ways to meet new people, since you are bonded by a common interest and the socials organised by the club allow you to get to know each other outside of sports. It has a very strong sense of community and diversity; especially the recreational team, which is mixed with men and women.



Read my student blog at: go.bath.ac.uk/camille-blog-23

Be Creative

As a Bath student, you can use the facilities at The Edge, our SU-led creative hub on campus, to pursue your passions, meet like-minded people, and learn new skills.

Join our creative community

While studying at Bath, you can get involved in regular creative and social events at The Edge with a variety of clubs and societies run through the Students' Union. These events give you the chance to meet new people and expand your creative boundaries by collaborating with other artists.

At The Edge you can:

- get music tuition with expert tutors, subsidised by the University
- take dance, art, and wellbeing classes
- use music rehearsal rooms to practise solo or as a group
- see exhibitions, plays, concerts, and other performances
- take part in creative workshops to find new ways of problem solving

Find funding for your art

If you're keen to develop your creative interests alongside your studies, you can apply for an arts scholarship. You can apply in any year during your time at Bath and could get funding to support your music tuition, time with an artistic mentor, and opportunities to meet and collaborate with other creative people.

Develop your creative skills

At The Edge you can get involved in activities that will help you find new ways to problem solve and innovate, as well as meet students on different courses and expand your horizons. The SU Arts Team can help you develop skills to support your studies and career. You can volunteer to support creative events, build presentation and public speaking skills, attend creative writing sessions to support academic studies, or learn new craft skills to improve wellbeing.

Visit go.bath.ac.uk/arts-23 to find out more.



"The art societies on campus, like the dance or painting societies, host sessions for people to come in and try things out."

Cedric,
MEng (Hons) Mechanical Engineering
with Manufacturing and Management



“There are a lot of things going on and we have a lot of fun. You get to just be who you want to be on stage.”

Ammira

BSc (Hons) Business

I think one top tip from me would be to go out of your comfort zone and to meet new people, especially during Freshers' week.

If you're someone who loves the arts, then you'll love being here because we have such a great theatre at the Edge. I've performed here for the Malaysian society. There are a lot of things going on, a lot of activities, and we have a lot of fun. You get to practice, dance and just be who you want to be on stage.

I don't think it was so hard to settle into Bath, mainly because of how welcoming the University is. Everyone is generally very friendly, and it was easy for me to find a community here.



🔍 Read my student blog at: go.bath.ac.uk/ammira-blog-23

Protecting our environment

At Bath, we're committed to protecting our surroundings and improving our sustainability while reducing the impact our systems, staff, and students have on the environment.

How you can get involved

Reduce Waste

As a student at Bath, you can help us reduce waste by taking part in initiatives like:

- Leave no Trace
- the Exchange cup scheme
- the Munch Box scheme
- Protect What Matters
- Eat What's Right

So far, our students and staff have:

- avoided using over 329,000 disposable cups by exchanging cups or using their own reusable ones¹
- reduced food waste by buying unused food from campus catering outlets at discount prices
- helped recycle nearly 15 tonnes of cutlery, food, crockery, glassware, plastics, and other materials through the 'Leave no Trace' scheme²
- raised an estimated £554,000 in charity donations through our Pack for Good scheme³

Save power

Each year, you can get involved in the international Student Switch Off competition to use the least amount of electricity in your accommodation.

You can take part in quizzes and photo competitions, as well as opportunities to volunteer and enhance your CV. There are prizes throughout the year and the winners get a free meal at the end of term.

Become climate literate

In your first few weeks here, you can have climate literacy training and earn a certificate, fully accredited by the Carbon Literacy project, which you can add to your CV.

Student Switch Off

Each year, Bath students take part in this international competition to use the least amount of electricity



£235,000

worth of electricity was generated by our Combined Heat and Power plants during the 2018/19 academic year. The recycled waste heat also keeps our Olympic-sized swimming pool warm

What the University is doing

Our Climate Action Framework

In 2020, we declared a climate emergency and set out our eleven Climate Action Framework principles. These commitments include:

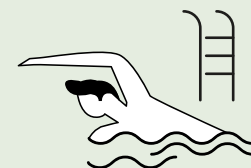
- a university-wide approach, covering climate action in education, research, partnerships, and reducing our own carbon footprint
- achieving carbon neutrality in company vehicle emissions, heating, and electricity by 2030
- halving emissions from purchased goods, services, waste, and all travel by 2030
- achieving Net Zero Carbon in all emissions by 2040

So far, throughout campus, we've:

- stopped using single-use plastic straws, cutlery, and cups in our campus outlets
- expanded The Exchange, reusable coffee cup scheme, from one takeaway outlet to all outlets on campus
- collected food waste for anaerobic digestion, which produces renewable energy without carbon emissions
- recycled 100% of waste coffee grounds from catering outlets
- installed water refill stations
- opened 'Refillery' stations within our retail outlets in a bid to reduce plastic packaging
- started selling only Fairtrade, Rainforest Alliance, and Organic certified coffee through our catering outlets

£58,000

raised for charity in 2020 through the Pack for Good campaign



Generating our own power

Our Combined Heat and Power plants on campus are over two times more efficient than a standard power station. During the 2018/19 academic year, they generated £235,000 worth of electricity, which is enough to power 540 houses.

The power stations also recycle their waste heat on site, which keeps our Olympic length swimming pool warm and creates hot water for showers. We also have five large sets of solar panels on our buildings, with more to come, and the rest of our electricity comes from renewable sources.

Researching for change

Many of our researchers are looking at the impacts of climate change and investigating ways to reduce emissions and protect the environment. We have several research institutes and centres dedicated to this, including:

- The Centre for Climate Change and Social Transformations
- The Institute for Sustainable and Circular Technologies
- The Institute for Advanced Automotive Propulsion Systems
- The Institute for Sustainable Energy and the Environment

We've also introduced the Laboratory Efficiency Assessment Framework (LEAF) to help lab workers save plastics, water, energy and other resources, reducing the environmental impacts of our research.

Collaborating with other universities

We're a member of the COP26 Universities Network, a growing group of more than 40 UK-based universities working together to provide the government with academic expertise on climate issues.

The Network has been meeting since 2019 to discuss and agree the plans for our contributions to a low-carbon world.

We're also a part of The Alliance for Sustainability Leadership in Education (EAUC). We work with colleges and universities across the UK and Ireland to make higher education as sustainable as it can be.



Visit go.bath.ac.uk/climate-change-23 to find out more.

¹ Estimated figure correct in December 2021.

² Since 2018.

³ Since 2012.

Joining us as an international student

As an international student at Bath, you'll be welcomed and supported by our diverse community of students and staff.

Joining the community

If you study at Bath, you'll be one of nearly 4,000 international students at the University. Our staff and students come from over 130 different countries, bringing vital diversity and multiculturalism to our community and helping each other to belong at Bath.

Through our Students' Union (The SU), you can join the International Students Association, as well as over 160 other student groups where you can make friends, socialise, and enjoy lots of new experiences. As well as clubs and societies based on interests and activities, you can join groups for different countries, languages and cultures.

🔍 Visit go.bath.ac.uk/su-groups-23 to find out more about The SU and its groups.

Accommodation

At Bath, you can apply for different types of accommodation depending on your preferences and lifestyle. We have University accommodation on campus and in the city, or you can choose to live in private accommodation somewhere nearby. You need to apply for University accommodation when you've accepted an offer to study at Bath.

See page 40 to find out more about your accommodation options.

Supporting you

Getting your visa

As an international student, you'll need a visa to study in the UK. You can contact our Student Immigration Service for advice about visas before you arrive and as a student at Bath.

🔍 Visit go.bath.ac.uk/visas-23 to find out more.

You can also contact the British Embassy, High Commission, or Consulate in your own country for advice about coming to the UK as a student.

Before you come to Bath

Our Student Services team can help you prepare for coming to the UK and starting at Bath.

While you're getting ready to come to the University, you'll get regular emails, helping you decide what to pack and how to plan your journey to Bath. You'll also be able to connect with current students to ask them any questions you have about preparing for life at Bath.

When you arrive

We'll support you through every step as you move to Bath and start your studies. We can collect you by bus from London Heathrow Airport and take you straight to the University. We can also help you settle into your new accommodation.

During your first year at Bath, we organise information sessions, tours of the campus and city, and social events where you can meet new friends. If you need more support, you can speak to an adviser at one of our daily drop-in advice sessions.

See page 49 to find out more about how we support our students.

🔍 Visit go.bath.ac.uk/international-students-23 to find out more about studying at Bath as an international student.

"For international students, it's a very safe university and city. My parents really cared about that."

Anabel,
BSc (Hons) Politics and
International Relations



Succeeding in your studies

While you're at Bath, we'll do everything we can to support your academic success and help you get what you want from your studies. You will have access to a wide range of opportunities all year round which will help you develop skills as well as your personal health and wellbeing. These include English language and one-to-one writing tutorials.

These online and face-to-face skills sessions are designed to complement your course and fit flexibly around your studies. As a Bath student, you can sign up for sessions and find additional learning resources to support your studies and employability on our MySkills website.

🔍 Visit go.bath.ac.uk/skills-23 to find out more about how we can help you succeed in your studies.



🔍 Watch our video:
go.bath.ac.uk/international-video-23



International Foundation Year

Our International Foundation Year (IFY) course gets you ready to study for your chosen undergraduate degree at Bath. This one-year full-time course caters for international students with the academic potential and motivation, but not the precise qualifications to allow direct entry into one of our courses.

Guarantee your university place

If you progress to study at Bath after the IFY, you'll be one of nearly 4,000 international students at the University. Our staff and students come from over 130 different countries, bringing vital diversity and multiculturalism to our community and helping each other to belong at Bath.

You will be guaranteed a place at Bath once you achieve the required progression grades during your IFY, you won't need to apply to the University through UCAS.

Get to know Bath

If you take the IFY, you'll study at Bath College, in the city centre, and get to know the UNESCO World Heritage city of Bath. You'll also have an induction at the University and attend special events on campus to help you prepare for starting your degree.

Your study schedule

The IFY starts with an induction week, followed by 30 weeks of taught classes and two exam weeks. Each week, you'll have about 21 hours in taught classes as well as time for independent study. Your taught classes will be a mixture of lectures, tutorials, and laboratory sessions. You'll also have access to online resources.

What you'll study

You'll study three of the following subjects, depending on your chosen progression degree:

- Biology
- Business
- Chemistry
- Economics
- English for Academic Purposes
- Mathematics
- Physics
- Social Science



How you'll be assessed

Depending on the subjects you study, you could be assessed through coursework, written examinations, practical work, and oral assessments.

Visit go.bath.ac.uk/ify-23 to find out more about the course.

Qualifications you need to apply

To apply for the IFY, you must be an international student whose qualifications are not appropriate for direct entry to university. You must also have the required English language qualifications.

You need a minimum IELTS score of 5.5, with at least 5.0 in each testing component.

If you're planning to do an undergraduate Management course at Bath, you need a minimum IELTS score of 6.0, with at least 5.5 in each testing component.

For full entry requirements, visit go.bath.ac.uk/ify-23.

Applying for the IFY

To apply for the IFY, go to go.bath.ac.uk/ify-23

You do not need to apply through UCAS.

If you have any questions about your application, email us at ify@bath.ac.uk.



Getting into Bath

We're proud to have a student community that welcomes people of any nationality, age, and background. Our Admissions team can help you with the application process and answer your questions along the way.

Applying for a place

If you're applying to study an undergraduate degree in the UK, you need to apply through UCAS.

🔍 Visit go.bath.ac.uk/ug-apply-23 to find out more about applying to Bath through UCAS.

Checking entry requirements

Before you apply to study at Bath, check the entry requirements for any courses you're interested in. The course pages in this prospectus include the details of our typical offer for students studying A levels or the International Baccalaureate Diploma (whether you study them in the UK or abroad). However, we can consider many other UK and international qualifications.

🔍 Visit go.bath.ac.uk/courses-23 for detailed and up-to-date information on our entry requirements.

English language categories

	GCSE or IGCSE	IELTS or IELTS Indicator	TOEFL IBT	Pearson PTE Academic	IB Diploma
Category A	6 or B	7.0 with 6.5 in all components	100 overall with 24 in each component	69 with 62 in each element	A pass in the IB Diploma including English taken at Standard or Higher Level grade of 3
Category B	4 or C	7.0 with 6.5 in each component	100 overall with 24 in each component	69 with 62 in each element	
Category C	4 or C	6.5 with 6.0 in each component	90 overall with 21 in each component	62 with 59 in each element	

English language requirements

Every student must meet the English language requirement for their chosen course. To make things easier for you, we have grouped our courses into three categories based on the required English level, summarised in the table below.

We accept English from a wide range of school-leaver qualifications across the world.

🔍 Visit go.bath.ac.uk/courses-23 and search for a course to see which qualifications we accept.

We generally only accept an English language qualification if you have completed it within 30 months of starting your degree (or 24 months for tests with an expiry date, such as IELTS, TOEFL IBT, and Pearson PTE Academic).



"I came to the summer school run by Bath with the aim of improving my personal statement. When I got here, I quickly realised that Bath was the perfect university for me."

Ed,
BSc (Hons) International Development with Economics





Writing your personal statement

Your personal statement is your chance to tell us about yourself, your ambitions, your skills and experience, and why you want to study your chosen course. When we read your personal statement, we want to find out:

- why you're enthusiastic about the course
- how your skills, experience, and qualifications will help your application
- what engagement you've had with your chosen degree, such as work experience (if you have it) or extracurricular activities
- anything relevant you plan to do before starting your degree

🔍 Visit go.bath.ac.uk/personal-statement-23 to find out more about what we're looking for.

Interviews

We do not normally interview as part of our admissions process. However, we might invite you for an interview if you:

- apply for a course where we need to assess suitability for a particular profession, like Pharmacy or Social Work and Applied Social Studies courses
- are taking qualifications that are difficult to assess on a UCAS application alone, like Access to HE Diplomas and BTECs for some courses

🔍 Visit go.bath.ac.uk/interviews-23 to find out more.

Taking a gap year

Depending on the course you apply for, you can defer your place if you plan on taking a year out or your circumstances change. This means you can ask to begin your course in the year after you apply. We won't ask you to explain why you're taking a gap year.

You can't normally defer your place if you're applying for our Social Work and Applied Social Studies course.

Mitigating circumstances

If you've had problems beyond your control that have affected, or could affect, your academic achievements, we might be able to take these into account when we review your application. We call these 'mitigating circumstances' and they could be personal, health-related, or something affecting your schooling.

We strongly encourage you to tell us if you think you have mitigating circumstances. Anything you tell us will be treated confidentially. You can let us know through our mitigating circumstances form available online.

🔍 Visit go.bath.ac.uk/mitigating-circumstances-23 to find out more and tell us about mitigating circumstances.

Applying after a break from education

We welcome applications from mature students. If you're 21 or over, we recommend that you've taken the equivalent of three A levels within the three years before you start your degree. This is to make sure that you're prepared for full-time study.

🔍 Visit go.bath.ac.uk/mature-students-23 to find out more.

🔍 Visit go.bath.ac.uk/discover-bath-23 to find out about the programmes we offer to help you prepare for university.

How we consider your application

Having a diverse student population is very important to us and we aim to select students with the greatest potential to succeed in our degree courses, regardless of background and circumstances.

Opportunities for all students

We know that the context or environment in which you study can have an impact on the grades you achieve and the access you have to extracurricular activities or work experience.

To make sure that we take these things into account when we make admissions decisions, we look at a range of contextual data alongside the information provided on your UCAS application, such as the social background and proportion of students who go to university in the area you live in. This gives us a better idea of your potential to excel on your chosen course and helps make sure that all applicants have fair opportunities throughout our admissions process.

🔍 Visit go.bath.ac.uk/contextual-admissions-23 to find out more.

If you're an A level or Cambridge Pre-U student, depending on your background, you may be eligible for a reduced alternative offer, including our Access to Bath course.

🔍 Visit go.bath.ac.uk/courses-23 and search for a course to see our entry requirements for alternative offers.

🔍 Visit go.bath.ac.uk/step-into-bath-23 to find out about the programmes we offer to support you as you apply to university.

"I loved Bath's campus when I came to see it at an open day. It seemed that with everything on your doorstep, life could be more relaxing."

Kishen,
BSc (Hons) Computer Science



Our admissions process

When you apply to Bath, we review your application based on your GCSEs, the subjects you're studying, your predicted grades, and your personal statement. If your application is strong enough you will receive an offer, regardless of your circumstances.

Our dedicated Admissions Progression team carefully considers your background and circumstances before deciding whether we can make you an offer. This approach is different than many other universities and makes our contextual admissions process as thorough and as tailored to you as possible; we focus on your individual potential.

We read and assess each application in full and our decisions are reviewed by at least two other members of the team so that they are fair and consistent.

If you choose Bath as one of your final choices but miss your offer, we may still be able to consider you for a place. We will look again at contextual factors, and where appropriate, our Admissions Progression team will prioritise you for any places we have.

Our decisions are limited by the space available on each course, so we can't guarantee we'll be able to consider you if you don't meet the conditions of your offer.

Predicted grades

The typical offers we publish show the standards we're looking for in your final grades.

However, we know that predicted grades are only one part of your story. We'll take your whole application into account, so your predicted grades don't necessarily need to match our typical offer for you to get a place at Bath.



Alternative offers for A level and Cambridge Pre-U students

At Bath, we believe in fair access to education and want to make sure our student community is as diverse as possible. We know that achievement is individual so our approach to offers reflects this.

We only ever require three A levels (or principal subjects) for our courses. However, your extra studies are recognised in our alternative offers. If you are studying a recognised 'extra' course or qualification, you may be eligible for an alternative offer that is one grade lower than our typical offer (for example, AAB instead of AAA). These alternative offers require high achievement in the relevant 'extra'.

We recognise additional achievement in the following areas:

- projects such as the Extended Project Qualification (EPQ) and Welsh Baccalaureate Skills Challenge
- additional maths qualifications
- engaging in our Widening Access schemes, or successful completion of our Access to Bath course for eligible students

If you receive an offer from us and are eligible for any of these alternatives, you'll receive the typical offer and each alternative offer you're eligible for separately. This gives you multiple options for meeting your offer conditions.

🔍 Visit go.bath.ac.uk/alternative-offers-23 to find out more.

"What set Bath apart was the immediately welcoming environment, the staff wanting to get to know all their potential applicants and allow them to make the best decision."

Tia,
BSc (Hons) Social Work and
Applied Social Studies



Access to Bath is an online course for applicants who meet our contextual admissions criteria. The course is designed to help students from diverse backgrounds get ready for university life. Through this course you'll find out what it is like to be a student at Bath, and you'll develop the skills, confidence, and knowledge to make a smooth transition to the University. If you complete and pass the course by the set deadline, you'll get an alternative offer for your course at Bath.

🔍 Visit go.bath.ac.uk/access-to-bath-23 to find out more.

Tuition fees

We want to make sure that you have all the information you need about our tuition fees, that you know in advance what you need to pay, and that you understand what you're getting for your money.

Our latest tuition fees

If you accept an offer to study at Bath, you'll need to pay tuition fees for each year of your studies.

You can find our most up-to-date fees on our website, but you should use these as a guide because our fees may increase each year. We publish the fees for each academic year on the website by December of the year before.

🔍 Visit go.bath.ac.uk/tuition-fees-23 to find out more.

Tuition fees for 2022 entry

Home students

Campus-based courses £9,250

Overseas students

Humanities and Social Sciences £19,800

with the exception of:
BSc/MSc Sport and Exercise Science
BSc Economics BSc Economics and Mathematics
BSc Economics and Politics
BSc Psychology

Economics (and related) and School of Management courses £22,000

including:
BSc International Management and Modern Languages
BSc Economics
BSc Economics and Mathematics
BSc Economics and Politics

All Science, Engineering, Health, and Psychology courses £24,500

including:
BSc/MSci Sport and Exercise Science
BSc Psychology

The fees could increase for the 2023/24 academic year.



Placement and study abroad fees

If you choose to take a placement or study abroad, you might pay a reduced fee during that year. The fee you pay will depend on your course.

For Home students, you'll pay the fee set by the UK government. The fees are currently capped at 20% of the full-time fee for placement years and 15% of the full-time fee for study abroad.

Your fee status

The amount you need to pay depends on your fee status. We determine your fee status based on your nationality, where you live, and how long you've lived there, according to the information you've given us in your application.

Your fee status will be either:

- home
- overseas

We'll normally confirm your fee status in your offer letter, but we might need to ask you some additional questions first.

🔍 Visit go.bath.ac.uk/fee-status-23 to see what your fee status is likely to be.

Home fees

If you have Home fee status, you will pay the fees set for the year by the UK government. These fees are approved by Parliament and could increase each year.

Overseas fees

If you have Overseas fee status, your tuition fees will usually increase by up to 5% a year during your studies. We will not increase your fees each year by more than this percentage.

You should budget for this increase to make sure you can afford each year of study. We'll publish the fees for each academic year on the website by December of the year before.

Paying your tuition fees

If you're a Home student, you may be able to get a loan to help you pay your tuition fees. See page 50 to find out about ways to fund your studies

If you don't have a tuition fee loan, you can pay by Direct Debit, debit card, credit card, or bank transfer.

🔍 Visit go.bath.ac.uk/paying-fees-23 to find out more

Extra costs

Depending on your course, you might have additional costs during your studies to pay for things like:

- computer equipment
- textbooks
- printing
- fieldwork
- travel to a work placement

You may also need to pay for exam retake charges and library fines.

🔍 Visit go.bath.ac.uk/extra-costs-23 to find out more.

Course finder



Accounting and finance	86 - 87	International development	112 - 113
Accounting and Finance		International Development with Economics	
Accounting and Management		Mathematical sciences	114 - 115
Architecture	88 - 89	Mathematics and Statistics	
Architecture		Mathematics	
Biosciences	90 - 91	Mathematics, Statistics and Data Science	
Biochemistry		Mechanical engineering	116 - 117
Biology		Aerospace Engineering	
Biomedical Sciences		Integrated Design Engineering	
Business and management	92 - 93	Mechanical Engineering	
Business		Mechanical Engineering with Automotive Engineering	
Management		Mechanical Engineering with Manufacturing and Management	
International Management		Modern languages	118 - 119
Management with Marketing		Modern Languages	
International Management and Modern Languages		Natural sciences	120 - 121
Chemical engineering	94 - 95	Natural Sciences	
Chemical Engineering		Pharmacology	122 - 123
Chemical Engineering with Environmental Engineering		Pharmacology	
Chemistry	96 - 97	Pharmacy	124 - 125
Chemistry		Pharmacy	
Chemistry for Drug Discovery		Physics	126 - 127
Chemistry with Management		Mathematics and Physics	
Civil engineering	98 - 99	Physics	
Civil Engineering		Physics with Astrophysics	
Structural and Architectural Engineering		Physics with Theoretical Physics	
Computer science	100 - 101	Politics	128 - 129
Computer Science and Artificial Intelligence		International Politics and Modern Languages	
Computer Science and Mathematics		Politics and International Relations	
Computer Science		Politics with Economics	
Criminology	102 - 103	Psychology	130 - 131
Criminology		Psychology	
Economics	104 - 105	Social work	132 - 133
Economics and Mathematics		Social Work and Applied Social Studies	
Economics with Politics		Sociology, social policy and social sciences	134 - 135
Economics		Social Policy	
Education	106 - 107	Social Sciences	
Education with Psychology		Sociology and Social Policy	
Electronic and electrical engineering	108 - 109	Sociology	
Computer Systems Engineering		Sport, exercise and health	136 - 137
Electrical and Electronic Engineering		Health and Exercise Science	
Electronic Engineering with Space Science and Technology		Sport (Sports Performance)	
Robotics Engineering		Sport and Exercise Science	
Integrated mechanical and electrical engineering	110 - 111	Sport Management and Coaching	
Integrated Mechanical and Electrical Engineering			

Accounting and finance



Accounting and finance combines the study of financial systems with the measurement and communication of this information.

You'll develop your analytical skills, learn to understand financial systems and explore other business areas you're interested in. If you choose the four-year course, you'll be able to apply your skills in a business environment with a placement year. This will give you a distinct advantage in the graduate job market. We have strong connections with over 300 organisations in the UK and worldwide. 95% of our (four-year) graduates are working or studying 15 months after their course, with an average salary of £31,000 (Discover Uni, 2021).

Accounting and Finance

BSc (Hons) Three years
BSc (Hons) Four years with work placement

Entry requirements

GCSE:
6 or B in English Language or Literature (or equivalent from category A – see page 76).

A level:
AAA or A*AB including A in Mathematics.

IB Diploma:
36 points and 6, 6, 6 or 7, 6, 5 in three Higher Level subjects including 6 in either HL Mathematics.



Graduates can apply for professional qualification exemptions from:

- the Association of Chartered Certified Accountants (ACCA)
- the Chartered Institute of Management Accountants (CIMA)
- the Institute of Chartered Accountants in England and Wales (ICAEW)

Accounting and Management

BSc (Hons) Three years
BSc (Hons) Four years with work placement

Entry requirements

GCSE:
6 or B in Mathematics and 6 or B in English Language or Literature (or equivalent from category A – see page 76).

A level:
AAA or A*AB in three A levels.

IB Diploma:
36 points and 6, 6, 6 or 7, 6, 5 in three Higher Level subjects.

BTEC (RQF):
DDD in a Level 3 National Extended Diploma.



For more information about these courses visit: go.bath.ac.uk/acc-fin-23

Top 5 for Accounting and Finance in the Guardian University Guide 2022

Top 10 for Accounting and Finance in the Complete University Guide 2022

Top 5 for Accounting and Finance in The Times and The Sunday Times Good University Guide 2022

Architecture



Architects use art, science and technology to design buildings, places and spaces.

Throughout our course, you'll develop your design skills and learn how cultural, historic and socio-economic factors inform design decisions. Based in our purpose-built studios, you'll work on a varied series of design projects which will challenge you to integrate the principles of structural, environmental and sustainable design. On some projects during your degree, you'll get to work in teams of architecture and civil engineering students. This helps you gain insight into the design problems and professional relationships you could experience in your future career.

We combine two placements of professional work experience during your academic studies, to help you on your journey to becoming a qualified Architect.

Architecture

BSc (Hons) four years including placements

Entry requirements

GCSE:

6 or B in Mathematics, 6 or B in English Language or Literature (or equivalent from category A – see page 76).

A level:

A*AA in three A levels.

IB Diploma:

36 points and 7, 6, 6 in three Higher Level subjects.



This course is currently prescribed by the Architects Registration Board (ARB), for the purposes of entry on to the United Kingdom Register of Architects.



This course is fully validated by the Royal Institute of British Architects (RIBA) for the purposes of RIBA membership.

“Going into practice allows you to see what the real-life problems are in architecture on a day-to-day basis. When you bring these back to your studio project after placement you know what to prioritise.”

Marina,
BSc (Hons) Architecture



For more information about this course visit:
go.bath.ac.uk/arch-23

1st for Architecture in The Times and The Sunday Times Good University Guide 2022

1st for course satisfaction for Architecture in the Guardian University Guide 2022

Biosciences



Top 10 for student experience for Biological Sciences in The Times and The Sunday Times Good University Guide 2022

96% of Biology and Biochemistry students agreed that as a result of their course, their career prospects have improved (National Student Survey 2021)

Biosciences is the study of living things, from ecosystems and populations to their molecular components. It's a highly relevant area of study which looks to address global issues such as food security, human health and environmental sustainability.

We offer three Biosciences subjects: Biology, encompassing life on all scales; Biochemistry, which focuses on biological systems at a cellular and biochemical level; and Biomedical Sciences which applies biological science to explore human health and the causes, prevention and treatment of disease.

Each course will give you the vital knowledge and skills to be part of the next generation of scientists or to move into other graduate roles. You can also take advantage of our strong links with global companies and leading research institutions by applying to go on a placement.

Biochemistry

BSc (Hons) Three years
BSc (Hons) Four years with professional placement
MBiochem (Hons) Four years
MBiochem (Hons) Five years with professional placement

Entry requirements

GCSE:

4 or C in Mathematics and 4 or C in English Language or Literature (or equivalent from category C – see page 76).

A level:

AAB including A in Biology and A in Chemistry.

IB Diploma:

36 points and 6, 6, 5 in three Higher Level subjects including 6 in Biology and 6 in Chemistry.

Biology

BSc (Hons) Three years
BSc (Hons) Four years with professional placement
MBiol (Hons) Four years
MBiol (Hons) Five years with professional placement

Entry requirements

GCSE:

4 or C in Mathematics and 4 or C in English Language or Literature (or equivalent from category C – see page 76).

A level:

AAB including A in Biology and A in a second science or mathematics subject.

IB Diploma:

36 points and 6, 6, 5 in three Higher Level subjects including 6 in Biology and 6 in a second science or mathematics subject.

Biomedical Sciences

BSc (Hons) Three years
BSc (Hons) Four years with professional placement
MBioMed (Hons) Four years
MBioMed (Hons) Five years with professional placement

Entry requirements

GCSE:

4 or C in Mathematics and 4 or C in English Language or Literature (or equivalent from category C – see page 76).

A level:

AAA or A*AB including A in Biology and A in Chemistry.

IB Diploma:

36 points and 6, 6, 6 or 7, 6, 5 in three Higher Level subjects including 6 in Biology and 6 in Chemistry.



Our courses have been accredited by the Royal Society of Biology (RSB) for a number of years. The RSB conducts a reaccreditation exercise every few years or when we make changes to the course. We are currently going through this reaccreditation process and are awaiting the outcome of this evaluation.

“First year biology covered a wide range of topics – this variety was one of the main draws for me, as it allowed me to figure out what I’m interested in.”

Rhys,
BSc (Hons) Biology



For more information about these courses visit: go.bath.ac.uk/bio-23

Business and management



1st for Marketing in the Complete University Guide 2022

Top 10 for Business, Management and Marketing in The Times and The Sunday Times Good University Guide 2022

Top 10 for Business, Management and Marketing in the Guardian University Guide 2022

Explore the business environment and learn how organisations function. Our courses cover core topics like managing people, business analytics and finance.

Combining theory, practice and placements, our courses will give you an excellent knowledge of business. Flexible structures let you explore features relevant to your chosen career. You'll develop a broad set of skills and an understanding of the international business environment.

All our four-year degrees include a work placement option (compulsory on some courses). We have strong connections with over 300 organisations in the UK and worldwide.

Our graduates have an excellent employment record. The average salary 15 months after the course for our business and management graduates is £30,500 - that's £7,500 higher than the national average. (Discover Uni, 2021).

Management

Business

BSc (Hons) Four years with two six-month work placements

Management

BSc (Hons) Three years
BSc (Hons) Four years with work placement

International Management

BSc (Hons) Three years
BSc (Hons) Four years with work or study abroad

Management with Marketing

BSc (Hons) Four years with work placement

Entry requirements

GCSE:

6 or B in Mathematics and 6 or B in English Language or Literature (or equivalent from category A – see page 76).

A level:

AAA or A*AB in three A levels.

IB Diploma:

36 points and 6, 6, 6 or 7, 6, 5 in three Higher Level subjects.

BTEC (RQF):

DDD in a Level 3 National Extended Diploma.

Management with modern languages

International Management and Modern Languages (French)

BSc (Hons) Four years with work or study abroad

International Management and Modern Languages (German)

BSc (Hons) Four years with work or study abroad

International Management and Modern Languages (Spanish)

BSc (Hons) Four years with work or study abroad

Entry requirements

GCSE:

6 or B in Mathematics and 6 or B in English Language or Literature (or equivalent from category A – see page 76).

A level:

AAB including A in your chosen language.

IB Diploma:

36 points and 6, 6, 5 in three Higher Level subjects including 6 in your chosen language.



For more information about these courses visit: go.bath.ac.uk/mgt-23

Chemical engineering



Chemical engineering combines science and mathematics to develop new and sustainable technologies, processes and products.


With a chemical engineering degree, you could have a role in providing clean water and sanitation, recovering valuable materials from waste, improving healthcare or researching new ways to generate energy.

Individual and group projects are a key feature of your studies and a chance for you to develop scientific ideas from the bench scale to process scale. Through lectures and practical lab sessions, you'll explore new technologies, develop industrial strategies and gain a comprehensive understanding of process design.

Our MEng degrees give you a more in-depth study experience and our placement options give you the chance to gain professional experience and work with engineers in industry.


Chemical Engineering

BEng (Hons) Three years
 BEng (Hons) Four years with professional placement
 MEng (Hons) Four years
 MEng (Hons) Five years with professional placement

 Accredited by the Institution of Chemical Engineers (IChemE) under licence from the UK regulator, the Engineering Council, for the purpose of partially (BEng) and fully (MEng) meeting the educational requirement or Chartered Chemical Engineer.

Chemical Engineering with Environmental Engineering

MEng (Hons) Four years
 MEng (Hons) Five years with professional placement

 Accredited by the Institution of Chemical Engineers (IChemE) under licence from the UK regulator, the Engineering Council, for the purpose of fully meeting the educational requirement for Chartered Chemical Engineer.

Entry requirements

GCSE:

4 or C in English Language or Literature (or equivalent from category C – see page 76).

A level:

A*AA including Mathematics and Chemistry.

IB Diploma:

36 points and 7, 6, 6 in three Higher Level subjects including Chemistry and either HL Mathematics.

 For more information about these courses visit: go.bath.ac.uk/chem-eng-23

Top 10 for Chemical Engineering in the Guardian University Guide 2022

Chemistry



Top 5 for Chemistry in the National Student Survey 2021 when comparing the Guardian University Guide institutions

Top 10 for course satisfaction for Chemistry in the Guardian University Guide 2022

Top 10 for student experience for Chemistry in The Times and The Sunday Times Good University Guide 2022

Chemists study the structure, properties and synthesis of matter. You'll learn how to make the substances we use every day, from molecules to materials.

Explore a range of topics and move seamlessly between areas such as nanotechnology, drug development, sustainability, and new materials.

The core material in the first year of all our courses is the same, giving you the flexibility to switch if you change your mind about what area you'd like to specialise in. You'll be prepared for a wide range of careers, from industry to business or healthcare, and can improve your employment prospects by going on a placement.

As a student here, you'll be part of a supportive department with friendly staff, an open-door culture and an active student community, including our Chemistry Society and Chem Crew student mentors.

Chemistry

BSc (Hons) Three years
 BSc (Hons) Four years with professional placement or study abroad
 MChem (Hons) Four years
 MChem (Hons) Four years with professional placement or study abroad

Chemistry for Drug Discovery

BSc (Hons) Three years
 BSc (Hons) Four years with professional placement or study abroad
 MChem (Hons) Four years
 MChem (Hons) Five years with professional placement or study abroad

Chemistry with Management

BSc (Hons) Three years
 BSc (Hons) Four years with professional placement or study abroad
 MSci (Hons) Four years
 MSci (Hons) Five years with professional placement



These courses have been accredited by the Royal Society of Chemistry (RSC) for a number of years. The RSC conducts a reaccreditation exercise every few years or when we make changes to the course. We are currently going through this reaccreditation process and are awaiting the outcome of this evaluation.

Entry requirements

GCSE:

4 or C in Mathematics and 4 or C in English Language or Literature (or equivalent from category C – see page 76).

A level:

If you study Chemistry and at least two other maths or science subjects: AAB including A in Chemistry plus two other maths or science subjects.

If you study Chemistry and only one other maths or science subject: AAA including A in Chemistry plus one other maths or science subject.

IB Diploma:

36 points and 6, 6, 5 in three Higher Level subjects including 6 in Chemistry and 5 in a second science or mathematics subject.

“There’s a strong focus on teaching labs and the lab demonstrators are all so friendly and helpful - it’s a really supportive environment.”

Grace,
 MChem (Hons) Chemistry with study abroad



For more information about these courses visit: go.bath.ac.uk/chem-23

Civil engineering



3rd for Civil Engineering in The Times and The Sunday Times Good University Guide 2022

Top 5 for Civil Engineering in the Guardian University Guide 2022

Civil, structural and architectural engineers design and shape the built environment, using creativity to improve the world we live in for a sustainable future.

At Bath, we encourage you to imagine new ways of delivering sustainable, practical, and beautiful engineering solutions. You'll push the boundaries of design and construction to generate creative ideas for our infrastructure and cities. By studying in our joint department with architecture, you'll have the opportunity to work in cross-disciplinary teams that mirror the professional relationships you'll experience in your career.

You can choose to move between any of our courses up to the end of your second year. Our MEng degrees give you a more in-depth study experience and our placement options give you the chance to gain professional experience and work with engineers in industry.

Civil Engineering

BEng (Hons) Three years
 BEng (Hons) Four years with professional placement
 MEng (Hons) Four years
 MEng (Hons) Five years with professional placement

Structural and Architectural Engineering

BEng (Hons) Three years
 BEng (Hons) Four years with professional placement
 MEng (Hons) Four years
 MEng (Hons) Five years with professional placement



All our undergraduate courses were reviewed by the Joint Board of Moderators (JBM) in November 2021 and have been recommended for accreditation/re-accreditation as partially (BEng degrees) or fully (MEng degrees) satisfying the academic base for a Chartered Engineer and fully satisfying the academic base for an Incorporated Engineer under the provisions of UK-SPEC (subject to approval by the Board in February 2022).

Entry requirements

GCSE:

4 or C in English Language or Literature (or equivalent from category C – see page 76).

A level:

A*AA including Mathematics.

IB Diploma:

36 points and 7, 6, 6 in three Higher Level subjects including either HL Mathematics.

“You can play such a big role in making sure we tackle societal and environmental problems. You will become the designer that our world needs.”

Raiesha,
 MEng (Hons) Civil Engineering with placement



For more information about these courses visit: go.bath.ac.uk/civ-eng-23

Computer science



Top 5 for teaching satisfaction for Computer Science and Information Systems in the Guardian University Guide 2022

Top 10 for student experience for Computer Science in The Times and The Sunday Times Good University Guide 2022

Top 10 for course satisfaction for Computer Science and Information Systems in the Guardian University Guide 2022

Computer science is the science behind much of the technology we use in our daily lives. Programming is a core topic but there's so much more to learn.

Our courses cover a broad range of areas in computer science, exploring the traditional software and logic aspects of the subject, with special attention to its underlying mathematics. You'll develop a sound knowledge base and wide range of skills valuable to a career in the field, including learning to analyse, integrate and apply new ideas and techniques to solve computing problems.

As a student here, you'll be part of a supportive department, with lots of opportunities to get involved in societies and events such as hackathons, coding competitions and conferences. You can also take advantage of our strong links with industry by applying to go on a placement.

Computer Science

BSc (Hons) Three years
 BSc (Hons) Four years with professional placement or study abroad
 MComp (Hons) Four years
 MComp (Hons) Five years with professional placement or study abroad

Entry requirements

GCSE:

4 or C in English Language or Literature (or equivalent from category C – see page 76).

A level:

A*AA including Mathematics.

IB Diploma:

36 points and 7, 6, 6 in three Higher Level subjects including either HL Mathematics.

Computer Science and Artificial Intelligence

BSc (Hons) Three years
 BSc (Hons) Four years with professional placement or study abroad
 MComp (Hons) Four years
 MComp (Hons) Five years with professional placement or study abroad

Entry requirements

GCSE:

4 or C in English Language or Literature (or equivalent from category C – see page 76).

A level:

A*AA including Mathematics.

IB Diploma:

36 points and 7, 6, 6 in three Higher Level subjects including either HL Mathematics.

Computer Science and Mathematics

BSc (Hons) Three years
 BSc (Hons) Four years with professional placement or study abroad
 MComp (Hons) Four years
 MComp (Hons) Five years with professional placement or study abroad

Entry requirements

GCSE:

4 or C in English Language or Literature (or equivalent from category C – see page 76).

A level:

A*AA including A*A in Mathematics and Further Mathematics.

Alternative offers are available online if you have not studied A level Further Mathematics.

IB Diploma:

36 points and either 7, 6, 6 in three Higher Level subjects including 6 in Mathematics: Analysis & Approaches or 7, 6, 5 in three Higher Level subjects including 7 in Mathematics: Analysis & Approaches.

“There is a wonderful mix of theory and practical, as well as plenty of labs and 1:1 tutor help.”

Molly,
 BSc (Hons) Computer Science and Mathematics

For more information about these courses visit: go.bath.ac.uk/comp-sci-23

Criminology



Criminology is the study of crime and criminality as well as society's response to these.

The study of criminology gives you a deep insight into the theories of crime, justice and punishment, by drawing on multiple perspectives and disciplines. You'll gain knowledge of how criminal justice agencies work and interact, how criminal justice policy is created, and how policing, courts and prisons present challenges for today's world.

You'll be able to take advantage of our professional links and go on a placement as part of your studies.

Your acquired knowledge and skills will set you up well for diverse careers, whether you decide to go into the criminal justice sector or another field.

Criminology

BSc (Hons) Three years
BSc (Hons) Four years with
professional placement

Entry requirements

GCSE:

4 or C in Mathematics and 4 or C in English Language or Literature (or equivalent from category B – see page 76).

A level:

AAB in three A levels

IB Diploma:

35 points and 6, 6, 5 in three Higher Level subjects.

BTEC (RQF):

DDD in a Level 3 National Extended Diploma.

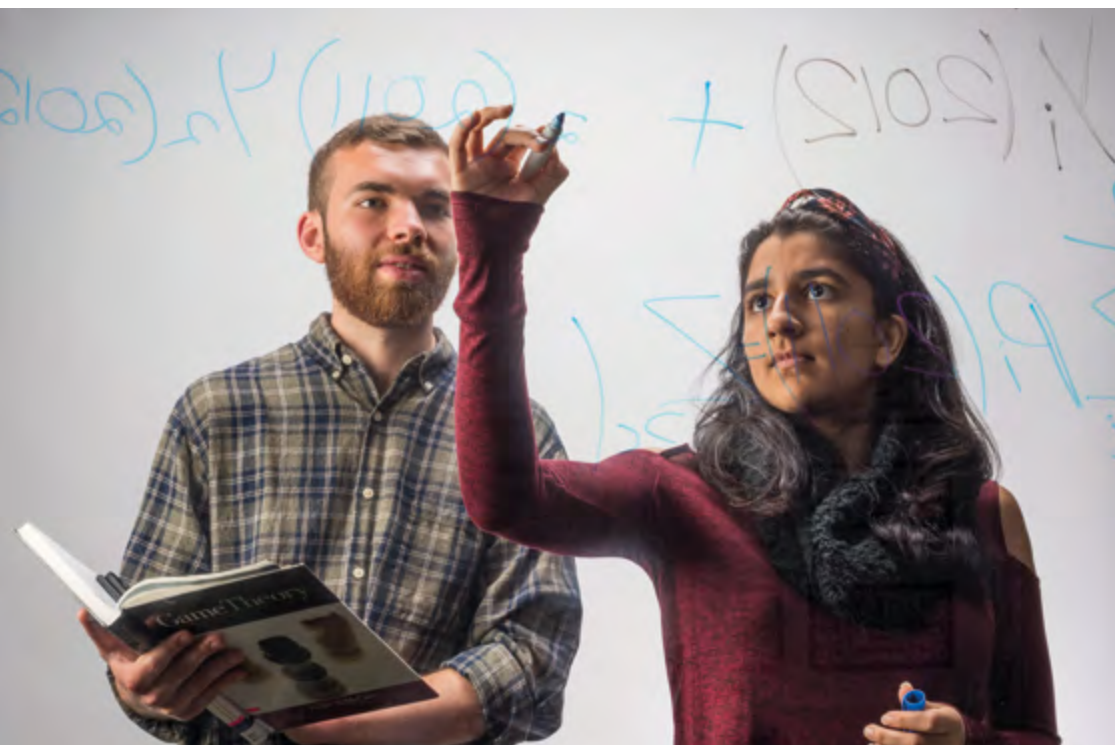
For more information about this course visit:
go.bath.ac.uk/crim-23

1st for Criminology in The Times and The Sunday Times Good University Guide 2022

1st for graduate prospects in Criminology in The Times and The Sunday Times Good University Guide 2022

2nd for student experience in Criminology in The Times and The Sunday Times Good University Guide 2022

Economics



Top 10 for Economics in the Complete University Guide 2022

Joint 1st for graduate prospects in Politics in the Complete University Guide 2022

Top 10 for career after 15 months in Economics in the Guardian University Guide 2022

Economics is a social science examining how consumers and producers make choices and how these affect the supply and demand for resources and their prices.

Economics helps us answer questions such as: How can economic principles and insights be applied to the allocation of scarce resources? Should we use taxation to reduce pollution? How does economic policy affect inequality? You will learn how to analyse complex data, solve quantitative problems, and apply these skills to real-life economic challenges.

Our economics graduates go on to pursue a range of careers in both the private and public sectors. All economics courses have the option of a year-long industry placement or study abroad experience.

Economics

BSc (Hons) Three years
BSc (Hons) Four years with professional placement or study abroad

Entry requirements

GCSE:

4 or C in English Language or Literature (or equivalent from category B – see page 76).

A level:

A*AA including Mathematics.

IB Diploma:

36 points and 7, 6, 6 in three Higher Level subjects including either HL Mathematics.

Economics and Mathematics

BSc (Hons) Three years
BSc (Hons) Four years with professional placement or study abroad

Entry requirements

GCSE:

4 or C in English Language or Literature (or equivalent from category C – see page 76).

A level:

A*AA including A*A in Mathematics and Further Mathematics. Alternative offers are available online if you are not studying Further Mathematics A level.

IB Diploma:

36 points and either 7, 6, 6 in three Higher Level subjects including 6 in Mathematics: Analysis and Approaches or 7, 6, 5 in three Higher Level subjects including 7 in Mathematics: Analysis and Approaches.

Economics with Politics

BSc (Hons) Three years
BSc (Hons) Four years with professional placement or study abroad

Entry requirements

GCSE:

4 or C in English Language or Literature (or equivalent from category B – see page 76).

A level:

A*AA including Mathematics.

IB Diploma:

36 points and 7, 6, 6 in three Higher Level subjects including either HL Mathematics.

“Economics gives you the opportunity to study interesting topics that can be applied to the real world. The lecturers make sessions engaging and provide excellent support throughout your studies.”

Tom,
BSc (Hons) Economics
with placement year



For more information about these courses visit: go.bath.ac.uk/econ-23

Education



Are you interested in young people's development and education? Do you want to analyse how educational and governmental practices and policies impact learning?

By studying education, you'll explore these issues. Through a blend of sociological, psychological, political and philosophical approaches, you'll identify and challenge the barriers to learning and wellbeing many around the world face, such as inequality and sustainability.

With our support, you'll learn about how to positively impact young people's lives. We want to help you help future generations.

Our course is delivered by the Department of Education, with relevant units from the Department of Psychology.

Education with Psychology

BA (Hons) Three years

BA (Hons) Four years with professional placement

Entry requirements

GCSE:

4 or C in English Language or Literature (or equivalent from category B – see page 76).

A level:

ABB in three A levels.

IB Diploma:

35 points and 6, 5, 5 in three Higher Level subjects.

BTEC (RQF):

DDM in a Level 3 National Extended Diploma.

This degree is not accredited by the British Psychological Society (BPS). We choose not to be BPS accredited so we can draw on a range of disciplines when looking at education-related issues. You can gain this accreditation through further study, such as a master's.

"I am very grateful to be studying such a diverse and engaging course. It has actively changed the way I view education and its significance in this current climate."

Blessing,
BA (Hons) Education with Psychology



For more information about this course visit:
go.bath.ac.uk/edu-psych-23

Top 10 for Education in The Times and The Sunday Times Good University Guide 2022

2nd for Psychology in the Guardian University Guide 2022*

Joint 3rd for graduate prospects in Psychology in the Complete University Guide 2022*

*Data for these courses is represented in some league tables under Psychology due to the number of students on the courses.

Electronic and electrical engineering



Top 15 for Electronic and Electrical Engineering in The Times and The Sunday Times Good University Guide 2022

Electronic and electrical engineering drives the systems, infrastructure and technologies that connect us.

At Bath, we want to give you the knowledge and confidence to advance products, applications and devices. Our courses teach you key principles and new engineering techniques against the backdrop of sustainability and other global challenges we face now and in the future. You'll discover the technology behind communications, healthcare, transport and energy while developing business and management skills through project work. You could go on to develop the next smartphone, design better biosensors to detect cancer, improve renewable micro-grids, or lead the robotics revolution.

Our MEng degrees give you a more in-depth study experience and our placement options give you the chance to gain professional experience and work with engineers in industry.

Computer Systems Engineering

BEng (Hons) Three years
BEng (Hons) Four years with professional placement
MEng (Hons) Four years
MEng (Hons) Five years with professional placement

Entry requirements

GCSE:

4 or C in English Language or Literature (or equivalent from category C – see page 76).

A level:

AAA or A*AB including A in Mathematics and A in a second science or technology subject.

IB Diploma:

36 points and 6, 6, 6 or 7, 6, 5 in three Higher Level subjects including 6 in either HL Mathematics and 6 in a second science or technology subject.



Accredited by the Institution of Engineering and Technology (IET) for many years. The IET conducts a reaccreditation exercise every few years or when we make changes to the course.*

Electrical and Electronic Engineering

BEng (Hons) Three years
BEng (Hons) Four years with professional placement
MEng (Hons) Four years
MEng (Hons) Five years with professional placement

Entry requirements

GCSE:

4 or C in English Language or Literature (or equivalent from category C – see page 76).

A level:

AAA or A*AB including A in Mathematics and A in a second science or technology subject.

IB Diploma:

36 points and 6, 6, 6 or 7, 6, 5 in three Higher Level subjects including 6 in either HL Mathematics and 6 in a second science or technology subject.



Accredited by the Institution of Engineering and Technology (IET) for many years. The IET conducts a reaccreditation exercise every few years or when we make changes to the course.*

Electronic Engineering with Space Science and Technology

BEng (Hons) Three years
BEng (Hons) Four years with professional placement
MEng (Hons) Four years
MEng (Hons) Five years with professional placement

Entry requirements

GCSE:

4 or C in English Language or Literature (or equivalent from category C – see page 76).

A level:

AAA or A*AB including A in Mathematics and A in a second science or technology subject.

IB Diploma:

36 points and 6, 6, 6 or 7, 6, 5 in three Higher Level subjects including 6 in either HL Mathematics and 6 in a second science or technology subject.



Accredited by the Institution of Engineering and Technology (IET) for many years. The IET conducts a reaccreditation exercise every few years or when we make changes to the course.*

Robotics Engineering

BEng (Hons) Three years
BEng (Hons) Four years with professional placement
MEng (Hons) Four years
MEng (Hons) Five years with professional placement

Entry requirements

GCSE:

4 or C in English Language or Literature (or equivalent from category C – see page 76).

A level:

AAA or A*AB including A in Mathematics and A in Physics.

IB Diploma:

36 points and 6, 6, 6 or 7, 6, 5 in three Higher Level subjects including 6 in either HL Mathematics and 6 in Physics.



For more information about these courses visit: go.bath.ac.uk/electrical-elec-eng-23

*We are currently going through this reaccreditation process and are awaiting the outcome of this evaluation.

Integrated mechanical and electrical engineering



Design and manufacture electrical and mechanical devices, technologies and systems by combining the core elements of both engineering sciences.

Industry needs more from their engineers than expertise in one discipline. They want graduates who understand how to combine mechanical and electrical engineering to tackle complex problems. Our course will help you develop a comprehensive knowledge of mechanics, materials, electrical and electronic systems and circuits. When you graduate, you could begin a career developing the next electric car, designing unmanned aerial vehicles, or increasing the efficiency of sustainable energy sources.

Our MEng degrees give you a more in-depth study experience and our placement options give you the chance to gain professional experience and work with engineers in industry.

Integrated Mechanical and Electrical Engineering

BEng (Hons) Three years
 BEng (Hons) Four years with professional placement
 MEng (Hons) Four years
 MEng (Hons) Five years with professional placement



Our Integrated Mechanical and Electrical Engineering courses have been accredited by the Institution of Mechanical Engineers (IMechE) and Institution of Engineering and Technology (IET) for several years. The Engineering Council conducts a reaccreditation exercise every few years or when we make changes to the course. We are currently going through this reaccreditation process and are awaiting the outcome of this evaluation.

Entry requirements

GCSE:

4 or C in English Language or Literature (or equivalent from category C – see page 76).

A level:

AAA or A*AB including A in Mathematics and A in Physics.

IB Diploma:

36 points and 6, 6, 6 or 7, 6, 5 in three Higher Level subjects including 6 in either HL Mathematics and 6 in Physics.



For more information about this course visit: go.bath.ac.uk/int-mech-elec-23

2nd for Mechanical Engineering in the Guardian University Guide 2022

3rd for Mechanical Engineering in The Times and The Sunday Times Good University Guide 2022

International development



International development concerns the global challenge of combating poverty and injustice, so people everywhere may find a better future.

You will learn to apply theories and methods from economics, politics, sociology and anthropology to analyse global challenges. Using case studies and diverse forms of data, you will explore how policies, projects, businesses, and citizens engage with these challenges. What works in practice, how, why and for whom?

You will be able to benefit from the work of our Centre for Development Studies. This will allow you to engage with research that informs international policy and practice.

International Development with Economics

BSc (Hons) Three years
BSc (Hons) Four years with professional placement

Entry requirements

GCSE:

7 or A in Mathematics and 4 or C in English Language or Literature (or equivalent from category B – see page 76).

A level:

AAB in three A levels.

IB Diploma:

36 points and 6, 6, 5 in three Higher Level subjects.

*Data for these courses is represented in some league tables under Economics due to league table subject groupings.

“I really enjoy the flexible approach to learning the course takes. You can really develop your knowledge in all areas or choose to focus on topics which interest you more.”

Josie,
BSc (Hons) International Development with Economics



For more information about this course visit:
go.bath.ac.uk/int-dev-econ-23

Top 100 in the world for Development Studies in the QS World University Rankings 2021

Top 10 for Economics in The Times and The Sunday Times Good University Guide 2022*

Top 10 for career after 15 months in Economics in the Guardian University Guide 2022*

Top 10 for Economics in the Complete University Guide 2022*

Mathematical sciences



Top 10 for career after 15 months for Mathematics in the Guardian University Guide 2022

Top 10 for graduate prospects for Mathematics in The Times and The Sunday Times Good University Guide 2022

Mathematics bridges the gap between the theoretical and physical worlds and underpins other subjects, from the physical and social sciences to management and business.

By studying one of our mathematics degrees, you'll develop a strong theoretical and practical understanding in mathematics, statistics, and computing. Our courses capture the essence of mathematical thinking, which means you'll graduate not only with the skills and knowledge for a successful career, but with an appreciation of the scope, value, and beauty of the subject.

All our courses are flexible and allow for a wide choice of units after year one, and you may switch courses during the first year. You can also gain valuable work experience during your degree by applying to go on a placement.

Mathematics and Statistics

BSc (Hons) Three years
BSc (Hons) Four years with professional placement or study abroad

Entry requirements

GCSE:

4 or C in English Language or Literature (or equivalent from category C – see page 76).

A level:

A*AA including A*A in Mathematics and Further Mathematics. Alternative offers are available online if you are not studying Further Mathematics A level.

IB Diploma:

36 points and either 7, 6, 6 in three Higher Level subjects including 6 in Mathematics: Analysis & Approaches or 7, 6, 5 in three Higher Level subjects including 7 in Mathematics: Analysis & Approaches.

Mathematics

BSc (Hons) Three years
BSc (Hons) Four years with professional placement or study abroad
MMath (Hons) Four years
MMath (Hons) Five years with professional placement
MMath (Hons) Four years with study abroad

Entry requirements

GCSE:

4 or C in English Language or Literature (or equivalent from category C – see page 76).

A level:

A*AA including A*A in Mathematics and Further Mathematics. Alternative offers are available online if you are not studying Further Mathematics A level.

IB Diploma:

36 points and either 7, 6, 6 in three Higher Level subjects including 6 in Mathematics: Analysis & Approaches or 7, 6, 5 in three Higher Level subjects including 7 in Mathematics: Analysis & Approaches.

Mathematics, Statistics and Data Science

BSc (Hons) Three years
BSc (Hons) Four years with professional placement or study abroad

Entry requirements

GCSE:

4 or C in English Language or Literature (or equivalent from category C – see page 76).

A level:

A*AA including A* in Mathematics and A in a second quantitative subject, see online prospectus for details. If you are studying Further Mathematics: A*AB including A* in Mathematics and B in Further Mathematics.

IB Diploma:

36 points and either 7, 6, 6 in three Higher Level subjects including 6 in Mathematics: Analysis & Approaches or 7, 6, 5 in three Higher Level subjects including 7 in Mathematics: Analysis & Approaches.

For more information about these courses visit: go.bath.ac.uk/maths-23

Mechanical engineering



2nd for Mechanical Engineering in the Guardian University Guide 2022

2nd for Aeronautical and Aerospace Engineering in the Complete University Guide 2022

Mechanical engineering

brings together creativity with maths and physics to design and manufacture machines, technologies, and systems.

Engineers are not afraid to test the limits of what is possible. At Bath, we give you the tools to do this by complementing your engineering knowledge with practical and transferable skills such as design, business and management. When you graduate, you'll have the technical leadership, initiative and interpersonal skills to pursue a career designing low-carbon vehicles, advancing biomedical products or developing the aircraft of the future. You can choose to move between any of our courses or transfer from an MEng to a BEng degree up to the end of your second year.

Our placement option gives you the chance to gain professional experience and work with engineers in industry.

Aerospace Engineering

MEng (Hons) Four years
MEng (Hons) Five years with professional placement



Accredited by the Institution of Mechanical Engineers (IMechE) and Royal Aeronautical Society (RAeS) for many years. The Engineering Council conducts a reaccreditation exercise every few years or when we make changes to the course.*

Integrated Design Engineering

MEng (Hons) Four years
MEng (Hons) Five years with professional placement



Accredited by the Institution of Mechanical Engineers (IMechE), Institution of Engineering and Technology (IET) and Institution of Engineering Designers (IED) for many years. The Engineering Council conducts a reaccreditation exercise every few years or when we make changes to the course.*

Mechanical Engineering with Manufacturing and Management

MEng (Hons) Four years
MEng (Hons) Five years with professional placement



Accredited by the Institution of Mechanical Engineers (IMechE) and the Institution of Engineering and Technology (IET) for many years. The Engineering Council conducts a reaccreditation exercise every few years or when we make changes to the course.*

Mechanical Engineering

MEng (Hons) Four years
MEng (Hons) Five years with professional placement



Accredited by the Institution of Mechanical Engineers (IMechE) for many years. The Engineering Council conducts a reaccreditation exercise every few years or when we make changes to the course.*

Mechanical with Automotive Engineering

MEng (Hons) Four years
MEng (Hons) Five years with professional placement



Accredited by the Institution of Mechanical Engineers (IMechE) for many years. The Engineering Council conducts a reaccreditation exercise every few years or when we make changes to the course.*

Entry requirements

GCSE:

4 or C in English Language or Literature (or equivalent from category C – see page 76).

A level:

A*AA including Mathematics and Physics with A* in Mathematics or Physics (or Further Mathematics if applicable).

IB Diploma:

36 points and 7, 6, 6 in three Higher Level subjects including Physics and either HL Mathematics



For more information about these courses visit: go.bath.ac.uk/int-mech-eng-23

Modern languages



Communication skills lie at the heart of every language course. Learning a language, whether at beginner (*ab initio*) or at an advanced level, will involve developing language learning as well as cultural understanding.

You'll explore how to communicate across cultures. In today's globalised and competitive employment market, languages and intercultural communication are transferable skills applicable to a wide variety of careers.

Our graduates work in very diverse sectors including the civil service fast-track, marketing and advertising agencies, the private sector, translation and interpretation services, international organisations, education, and journalism.

Modern Languages

BA (Hons) Four years with study or work abroad

Language options:

You'll study two languages during this course. For the first, you must choose one advanced-level language from French, German or Spanish. For the second, you can choose either another of these advanced-level options or any one of the following beginner language options - French, German, Italian, Mandarin, Russian or Spanish.

Entry requirements

GCSE:

4 or C in English Language or Literature (or equivalent from category C – see page 76).

A level:

AAB in three A levels. For advanced language options, your A level subjects must include that language.

IB Diploma:

35 points and 6, 6, 5 in three Higher Level subjects.

For advanced language options, your Higher Level subjects must normally include that language.

"I particularly enjoy that at Bath, the lectures and seminars about history, politics and culture are delivered in the foreign language (for post-A Level languages). This gives you lots of opportunities to practise speaking, listening, reading, and writing in that language."

Daniel, BA (Hons) Modern Languages and European Studies (now BA Modern Languages)



For more information about this course visit: go.bath.ac.uk/mod-lang-23

Joint 1st for graduate prospects in French in The Times and The Sunday Times Good University Guide 2022

Top 10 for graduate prospects in German in the Complete University Guide 2022

2nd for student experience in Italian in The Times and The Sunday Times Good University Guide 2022

Natural sciences



Natural sciences allows you to study more than one science subject. Options could include biology, biochemistry, chemistry, environmental science, pharmacology or physics.

A natural sciences degree opens up a world of possibilities, from researching elephants in Zimbabwe, to undertaking PhD research in laser physics or working as a metallurgist in Australia.

In week one of your course, you'll shape your degree to your career aspirations by choosing a combination of two subjects based on your previous qualifications. You can also take other subjects such as education or management, and gain work experience on a placement. By studying more than one subject, you'll gain a diverse range of skills and knowledge to approach scientific problems from multiple angles. This is a unique perspective that is highly sought after by employers.

Natural Sciences

BSc (Hons) Three years
 BSc (Hons) Four years with professional placement or study abroad
 MSci (Hons) Four years
 MSci (Hons) Five years with professional placement or study abroad

"You don't just get the depth of one science, you get the breadth of many of them."

Millie,
 BSc (Hons) Natural Sciences

For more information about this course visit:
go.bath.ac.uk/nat-sci-23

Entry requirements

GCSE:

6 or B in Mathematics (unless taken at A level) and 4 or C in English Language or Literature (or equivalent from category C – see page 76).

A level:

A level: A*AA in three A levels including one of the following combinations:

- Biology and Chemistry
- Chemistry and Mathematics
- Biology, Mathematics and Physics
- Chemistry, Mathematics and Physics

IB Diploma:

36 points and 7, 6, 6 in three Higher Level subjects including one of the following combinations:

- Biology and Chemistry
- Chemistry and either HL Mathematics
- Biology, Physics and either HL Mathematics
- Chemistry, Physics and either HL Mathematics

Top 5 for Natural Sciences for teaching on the course in the National Student Survey 2021 when comparing the Guardian University Guide institutions

Top 10 for Natural Sciences in the National Student Survey 2021 when comparing the Guardian University Guide institutions

Pharmacology



Explore the effects of drugs on the body and learn how to develop effective and safe medicines.

If you love lab work and are interested in health and disease but don't want to work in a patient-facing role, then this could be the course for you.

Pharmacologists study disease processes and the impact of drugs on the body – where they act, what they do, and areas of novel drug discovery. You'll gain a thorough understanding of physiology at the molecular, tissue and whole-body level, and will develop the necessary skills for a career in research or pharmaceutical development.

Unlike many universities that start with a general core science year, we teach pharmacology from the outset, with input from industry experts. This means you'll be confident going into your placement or final year project, knowing you already have two years of specialist knowledge and practical experience under your belt.

Pharmacology

BSc (Hons) Three years
 BSc (Hons) Four years with professional placement
 MPharmacol BA (Hons) Four years with professional placement

Entry requirements

GCSE:

4 or C in Mathematics and 4 or C in English Language or Literature (or equivalent from category B – see page 76).

A level:

AAB including Chemistry and one other science or mathematics subject.

IB Diploma:

36 points and 6, 6, 5 in three Higher Level subjects including Chemistry and a second science or mathematics subject.

“I love that I can do a placement at a pharmaceutical company and get a year's experience before I even graduate! Not many unis provide this and the support is amazing.”

Dorsa,
 BSc (Hons) Pharmacology



For more information about this course visit:
go.bath.ac.uk/pharmacol-23

Top 10 for Pharmacology and Pharmacy in three leading national league tables for 2022

2nd for Pharmacology in the National Student Survey 2021 when comparing the Guardian University Guide institutions

96% of Pharmacology students said they would recommend their course to a friend (National Student Survey 2021)

Pharmacy



Train as a healthcare professional in all aspects of medicines use and design. A pharmacist has a valued role as a member of a multidisciplinary healthcare team.

Medicines play a vital role in optimising patient health. As a pharmacy student, you'll gain a unique knowledge of both clinical use and the scientific development of medicines. You'll develop consultation and decision-making skills, allowing you to support patients and prescribers in the optimal use of medicines.

Recognised as one of the top schools of pharmacy in the UK, our graduates consistently achieve high pass rates in the registration assessment set by the General Pharmaceutical Council, ensuring you are well equipped for a rewarding career in pharmacy or pharmaceutical research.

Our five-year MPharm course is designed exclusively for international students. It gives you the opportunity to complete your foundation year (previously called pre-registration year) in the UK whilst keeping your student status.

Pharmacy

MPharm (Hons) Four years
MPharm (Hons) Five years including integrated pre-registration (foundation) year (international students only)

Entry requirements

GCSE:

4 or C in Mathematics and 4 or C in English Language or Literature (or equivalent from category B – see page 76).

A level:

AAB including Chemistry and one other science or mathematics subject.

IB Diploma:

36 points and 6, 6, 5 in three Higher Level subjects including Chemistry and a second science or mathematics subject.

“I wanted to get into a career where I can have a practical lifestyle working in a hospital or pharmacy and getting to speak to patients”

Tirzah,
MPharm (Hons) Pharmacy



For more information about this course visit:
go.bath.ac.uk/pharma-23

Top 10 for Pharmacology and Pharmacy in three leading national league tables for 2022

1st for Pharmacy in the National Student Survey 2021 when comparing the Guardian University Guide institutions

Top 10 for career after 15 months for Pharmacy and Pharmacology in the Guardian University Guide 2022

Physics



Top 5 for course satisfaction for Physics in the Guardian University Guide 2022

Top 10 for Physics in the National Student Survey 2021 when comparing the Guardian University Guide institutions

Top 10 for career after 15 months for Physics in the Guardian University Guide 2022

Physics is at the heart of some of the greatest scientific advances of our age, from the discovery of the Higgs boson to the detection of gravitational waves and the development of quantum computing.

Our courses explore the fundamental laws underpinning the universe, from subatomic to cosmological scales. You'll develop a strong understanding of the underlying theories of physics combined with practical experience from lab sessions, projects, mathematical modelling and computer simulations.

You can take advantage of our strong links with industry and research institutions and go on a placement year during your degree. Some courses also include a research placement in the final year, giving you the opportunity to join another leading national or international research institution.

Physics

BSc (Hons) Three years
 BSc (Hons) Four years with professional placement or study abroad
 MPhys (Hons) Four years
 MPhys (Hons) Four years with research placement
 MPhys(Hons) Five years with professional placement, research placement or study abroad

Physics with Theoretical Physics

BSc (Hons) Three years
 BSc (Hons) Four years with professional placement or study abroad
 MPhys (Hons) Four years
 MPhys (Hons) Four years with research placement
 MPhys(Hons) Five years with professional placement, research placement or study abroad



Our courses have been accredited by the Institute of Physics (IoP) for a number of years. The IoP conducts a reaccreditation exercise every few years or when we make changes to the course. We are currently going through this reaccreditation process and are awaiting the outcome of this evaluation.

“Physics isn’t just learning about how galaxies work. It’s about being able to look at the problem and say how it all fits together.”

Erin,
 BSc (Hons) Physics
 with professional placement

Physics with Astrophysics

BSc (Hons) Three years
 BSc (Hons) Four years with professional placement or study abroad
 MPhys (Hons) Four years
 MPhys (Hons) Four years with research placement
 MPhys(Hons) Five years with professional placement, research placement or study abroad

Mathematics and Physics

BSc (Hons) Three years
 BSc (Hons) Four years with professional placement or study abroad
 MSci (Hons) Four years
 MSci (Hons) Five years with professional placement or study abroad

Entry requirements

GCSE:
 4 or C in English Language or Literature (or equivalent from category C – see page 76).

A level:
 A*AA including Mathematics and Physics, with A* in Maths or Physics (or Further Mathematics if applicable).

IB Diploma:
 36 points and 7, 6, 6 in three Higher Level subjects including Physics and either HL Mathematics.



For more information about these courses visit: go.bath.ac.uk/phys-23

Politics



Joint 1st for career after 15 months in Politics in the Guardian University Guide 2022

Joint 1st for graduate prospects in Politics in the Complete University Guide 2022

Top 10 for Politics in The Times and The Sunday Times Good University Guide 2022

This is an exciting time to study politics. You'll explore current dilemmas and engage with ideas that push boundaries.

By gaining methodological skills and a deep understanding of our changing world, you'll be able to respond to challenges facing contemporary societies.

Our staff have particular expertise in conflict, security, climate politics, international relations, EU and British politics, gender, nationalism, populism and radical politics.

Our graduates often go on to work in the civil service, private and voluntary sector, banking, finance, media, and national, European and international organisations.

International Politics and Modern Languages

BA (Hons) Four years with study or work abroad

Entry requirements

You can study either an advanced language from French, German or Spanish or a beginner language from French, German, Italian, Mandarin, Russian or Spanish.

GCSE:

4 or C in English Language or Literature (or equivalent from category C – see page 76).

A level:

AAB in three A levels. For advanced language options, your A level subjects must include that language.

IB Diploma:

35 points and 6, 6, 5 in three Higher Level subjects.

For advanced language options, your Higher Level subjects must normally include that language.

Politics and International Relations

BSc (Hons) Three years

BSc (Hons) Four years with professional placement or study abroad

Entry requirements

GCSE:

4 or C in English Language or Literature (or equivalent from category C – see page 76).

A level:

AAA or A*AB in three A levels.

IB Diploma:

36 points and 6, 6, 6 or 7, 6, 5 in three Higher Level subjects.

Politics with Economics

BSc (Hons) Three years

BSc (Hons) Four years with professional placement or study abroad

Entry requirements

GCSE:

7 or A in Mathematics and 4 or C in English Language or Literature (or equivalent from category C – see page 76).

A level:

AAA or A*AB in three A levels.

IB Diploma:

36 points and 6, 6, 6 or 7, 6, 5 in three Higher Level subjects.

“The Politics with Economics course at the University of Bath truly challenges one’s conventional beliefs. It exposes you to a diverse range of theories and topics, broadening your understanding of the world.”

Muhammad,
BSc (Hons) Politics with Economics



For more information about these courses visit: go.bath.ac.uk/pol-23

Psychology



Psychology is the scientific study of mental life and human behaviour. It explains how we think, feel and act, both individually and as part of social groups.

By studying with us, you'll explore many different areas of psychology. In some cases, you'll carry out research using methods such as brain imaging, interviews and observations.

Our academics have expertise in clinical, cognitive, developmental, environmental, health, neurological and social aspects of psychology. Their aim is to help you develop your analytical skills to explain or predict behaviour.

Our course applies psychological knowledge to a range of issues to overcome real-world problems and make a global impact.

Psychology

BSc (Hons) Three years
BSc (Hons) Four years with work placement

Entry requirements

GCSE:

7 or A in Mathematics and 6 or B in English Language or Literature (or equivalent from category A – see page 76).

A level:

A*AA in three A levels.

IB Diploma:

36 points and 7, 6, 6 in three Higher Level subjects.



Accredited by and confers eligibility for Graduate Basis for Chartered Membership of the British Psychological Society.

“What I love about my course is that in addition to learning key concepts and theories, I can explore several branches of psychology, which is helping me decide my next steps in my future career.”

Eirini,
BSc (Hons) Psychology



For more information about this course visit:
go.bath.ac.uk/psych-23

2nd for Psychology
in the Guardian
University Guide 2022

2nd for Psychology
in The Times and The
Sunday Times Good
University Guide 2022

Joint 3rd for
graduate prospects
in Psychology in the
Complete University
Guide 2022

Social work



Social workers support and empower people to improve lives. They protect vulnerable people whilst respecting and promoting human rights.

You'll learn how to support a wide range of people in diverse and complex situations and develop professional capabilities in respect of social work knowledge, values, and skills. Through teaching and your Professional Practice Placement, you'll develop the necessary knowledge to assess needs, respond to crises, and advocate on behalf of individuals or communities.

As a professionally qualified social worker, you might work in a range of health and social care settings, including the NHS, social services, and private and voluntary social care providers.

Social Work and Applied Social Studies

BSc (Hons) Three years

Entry requirements

GCSE:

4 or C in Mathematics and 4 or C in English Language or Literature (or equivalent from category B – see page 76).

A level:

BBB in three A levels.

Access to HE Diploma:

A pass with 27 credits award at Distinction and 12 credits awarded at Merit or above.

BTEC (RQF):

DDM in a Level 3 National Extended Diploma.

For more information about this course visit:
go.bath.ac.uk/soc-work-applied-23



Our course has enabled students to meet the Professional Capabilities Framework (PCF) and Social Work England professional standards for a number of years. A programme approval exercise takes place every few years or when we make changes to the course. We are currently going through this approval process and are awaiting the outcome of this evaluation.

Top 10 for Social Work in the Guardian University Guide 2022

Top 10 for Social Work in The Times and The Sunday Times Good University Guide 2022

Top 5 for research quality in Social Work in the Complete University Guide 2022

Sociology, social policy and social sciences



2nd for Sociology in The Times and The Sunday Times Good University Guide 2022

100% student satisfaction for BSc Social Sciences - 4 years including placement year in the National Student Survey 2021

1st for graduate prospects in Social Policy in The Times and The Sunday Times Good University Guide 2022

Social and policy sciences seek to understand how we're shaped by organisations around us, exploring if the foundations of society could be organised differently.

Our courses aim to provide you with a new lens to see the world and understand people living in different, and often dynamically changing, social contexts.

You will explore the social causes and consequences of the world's immediate problems such as climate change, poor health, threats to expert knowledge, rapid technological change, poverty and inequality. Our graduates have worked as researchers, civil servants, international consultants, journalists, and in multiple government, charity sector and business-related roles.

Social Policy

BSc (Hons) Three years
BSc (Hons) Four years with professional placement

Entry requirements

GCSE:

4 or C in Mathematics and 4 or C in English Language or Literature (or equivalent from category B – see page 76).

A level:

AAB in three A levels.

IB Diploma:

35 points and 6, 6, 5 in three Higher Level subjects.

BTEC (RQF):

DDD in a Level 3 National Extended Diploma.

Sociology and Social Policy

BSc (Hons) Three years
BSc (Hons) Four years with professional placement

Entry requirements

GCSE:

4 or C in Mathematics and 4 or C in English Language or Literature (or equivalent from category B – see page 76).

A level:

AAB in three A levels.

IB Diploma:

35 points and 6, 6, 5 in three Higher Level subjects.

BTEC (RQF):

DDD in a Level 3 National Extended Diploma.

Social Sciences

BSc (Hons) Three years
BSc (Hons) Four years with professional placement

Entry requirements

GCSE:

4 or C in Mathematics and 4 or C in English Language or Literature (or equivalent from category B – see page 76).

A level:

ABB in three A levels.

IB Diploma:

35 points and 6, 5, 5 in three Higher Level subjects.

BTEC (RQF):

DDM in a Level 3 National Extended Diploma.

Sociology

BSc (Hons) Three years
BSc (Hons) Four years with professional placement

Entry requirements

GCSE:

4 or C in Mathematics and 4 or C in English Language or Literature (or equivalent from category B – see page 76).

A level:

AAB in three A levels.

IB Diploma:

35 points and 6, 6, 5 in three Higher Level subjects.

BTEC (RQF):

DDD in a Level 3 National Extended Diploma



For more information about these courses visit: go.bath.ac.uk/soc-pol-23

Sport, exercise and health



2nd for Sports Science in The Times and The Sunday Times Good University Guide 2022

2nd for Sports Science in the Guardian University Guide 2022

Top 10 in the world for sports-related subjects in the QS World University Rankings 2021

Joint 2nd for graduate prospects in Sports Science in the Complete University Guide 2022

The study of sport explores the impact of sport, exercise and health on individuals and society. You can learn about the science of sport, exercise and health, coaching, sport management, leisure and physical activity, and sports performance. You don't need to be good at sport to do a sports degree.

Our courses have a strongly applied focus and are regularly updated to keep pace with changes in the field. Depending on the course, your studies could incorporate a range of disciplines including physiology, psychology, anatomy, biology, biochemistry, politics, management, education, sociology, and cultural studies.

Our graduates work for a range of employers including sport science support, public health, exercise medicine, education, management, coaching and development.

Health and Exercise Science

BSc (Hons) Three years
BSc (Hons) Four years with professional placement

Entry requirements

GCSE:

4 or C in Mathematics, 4 or C in a science GCSE and 4 or C in English Language or Literature (or equivalent from category C – see page 76).

A level:

AAB or A*BB or A*AC in three A levels.

IB Diploma:

36 points and 6, 6, 5 in three Higher Level subjects.

BTEC (RQF):

DDD in a Level 3 National Extended Diploma.

Sport and Exercise Science

BSc (Hons) Three years
BSc (Hons) Four years with professional placement or study abroad
MSci (Hons) Four years
MSci (Hons) Five years with professional placement or study abroad

Entry requirements

GCSE:

4 or C in Mathematics, 4 or C in a science GCSE and 4 or C in English Language or Literature (or equivalent from category C – see page 76).

A level:

AAA or A*AB including A in one of Biology, Chemistry, Further Mathematics, Mathematics, Physics, Psychology or Statistics.

IB Diploma:

36 points and 6, 6, 6 or 7, 6, 5 in three Higher Level subjects including 6 in one maths or science subject.

BTEC (RQF):

DDD in a Level 3 National Extended Diploma in Sport and Exercise Science or Applied Science with Distinctions in specified science units.

Sport Management and Coaching

BSc (Hons) Three years
BSc (Hons) Four years with professional placement

Entry requirements

GCSE:

4 or C in Mathematics and 4 or C in English Language or Literature (or equivalent from category C – see page 76).

A level:

AAB or A*BB or A*AC in three A levels.

IB Diploma:

36 points and 6, 6, 5 in three Higher Level subjects.

BTEC (RQF):

DDD in a Level 3 National Extended Diploma.

Sport (Sports Performance)

FdSc Two years
On successful completion, you may progress to the one-year BSc (Hons) Sport (Sports Performance) top-up degree.

Entry requirements

GCSE:

4 or C in Mathematics and 4 or C in English Language or Literature (or equivalent from category C – see page 76).

A level:

CCC in three A levels.

BTEC (RQF):

MMM in a Level 3 National Extended Diploma or DD in a Level 3 National Diploma.



For more information about these courses visit: go.bath.ac.uk/sport-exe-health-23

Experience the University

There are lots of ways you can find out what it's like to be a student at Bath, whether you're planning to visit the campus or connect with us from home.

On-Campus Open Days

Explore our campus and talk to students and staff about what it's like to live and study at Bath.

Virtual Open Days

Join one of our Virtual Open Days to watch live talks and take part in chat sessions with students and staff.

Campus Tours

Take a guided tour of our beautiful campus. We run campus tours throughout the year, either in-person or virtually, depending on government guidance in place at the time.

Find out more online

You can also find out about life at Bath through our website. Visit go.bath.ac.uk/undergraduate-virtual-experience-23 for virtual campus tours, blogs and videos.


Register at go.bath.ac.uk/ug-open-days-23 for the latest news about Open Days and campus visits in 2022.



 Take a virtual tour of our campus: go.bath.ac.uk/virtual-tour-23

Ask us questions

If you have any questions about our courses, our entry requirements, or what it's like to study at Bath, you can chat directly with one of our Student Ambassadors or a member of staff.

 Visit go.bath.ac.uk/contact-us-23 to get in touch.



Outreach programmes

Discover Bath

An online and in-person programme which gives prospective students a taste of life at Bath.

Step into Bath

A one-week programme on life as a student with online sessions on a different theme each day.

 go.bath.ac.uk/outreach-programmes-23

Getting to campus

Visit go.bath.ac.uk/travel-advice-23 for the latest travel advice and information.

Travelling to the city of Bath

By train

Bath Spa train station, in the city centre, is on the main line between Bristol Temple Meads and London Paddington.

Train journeys to Bath take about:

- 15 minutes from Bristol
- 1 hour 10 minutes from Cardiff
- 1 hour 20 minutes from London
- 1 hour 20 minutes from Southampton
- 1 hour 20 minutes from Exeter
- 1 hour 40 minutes from Birmingham
- 3 hours 20 minutes from Manchester

By coach

There are frequent National Express services from London Victoria and London Heathrow airport to Bath city centre.

By plane

The nearest airport is Bristol International Airport where you can catch the A4 Air Decker bus directly to Bath. There are also regular train and coach services from London Heathrow and London Gatwick.

Travelling to the University

By bus

You can get to the campus from Bath city centre on:

- the U1
- the U2
- Service 20
- Service 22

By car

If you're using a satnav, use the postcode BA2 7AY. The campus is in Claverton Down, on the east side of Bath.

Coming by motorway, take the M4 to Junction 18 and the A46 towards Bath. Follow signs for The American Museum and the University.

Visitor parking on campus

There is pay and display parking in the East and South car parks.

Visit go.bath.ac.uk/parking-23 to find out more.

We have accessible parking in all our car parks. If you have a Blue Badge, you can park in these spaces for free.

Visit go.bath.ac.uk/campus-accessibility-23 to find out more.



Index

A			H	
Accommodation	40 to 43		Help and support	48-57
Admissions	76 to 81		I	
Alternative offers	79, 81		International Foundation Year	74 to 75
Alumni	30, 56		International qualifications	75, 76, 78, 81
Applying to Bath	76 to 81		International students	72 to 75
Arts	12, 55, 66 to 69		Internships	22, 28, 32 to 33
B			Interview (admission)	54, 78
Bath (city)	14, 36 to 47		Interview (job)	15, 28 to 29, 32 to 33
Bursaries	52 to 55		L	
C			Language learning	22, 29, 72 to 73, 74
Cambridge Pre-U	79, 81		Learning and teaching	18 to 25
Campus	14, 34 to 42, 46, 138 to 141		Library	23, 38
Campus tours	36, 138		Living costs	54 to 55, 83
Careers	15, 22, 26 to 33		Loans	55, 83
Chaplaincy	51		M	
Childcare	51		Mature students	40, 59, 78
Course finder	84 to 137		Medical centre	37, 51
D			Mental health support	13, 51
Deferred entry	78		Money advice	13, 51, 55
Dentist	37, 51		Music lessons	12, 59, 66
Disability support	51		N	
E			Nightlife	44
Edge Arts	12, 66 to 69		Nightline	50
English language requirements	75, 76		Nursery	51
English Language support	73		O	
Entry requirements	75, 76 to 81		Open Days	138, 143
Environment and sustainability	70 to 71		P	
Experience the University	138 to 140		Part-time work	32, 55, 59
Extended Project Qualification (EPQ)	81		Peer mentoring	13, 50, 59
F			Personal statements	78, 80
Faith-based support	51		Placements	15, 22, 28, 32 to 33, 83
Finances	51, 54 to 55		R	
Funding	13, 51, 54 to 55		Research	28, 71
G				
Gap year	78			
Gold Scholarship Programme	54, 56			

Index

S

Scholarships	54 to 57
Security	38, 40, 44
Socialising	12, 38, 44, 58 to 67
Societies	12, 29, 66 to 67
Sports	12, 14, 55, 60 to 65
Student Services	13, 51, 72
Students' Union	12, 29, 50, 58 to 59, 61, 66, 72
Study abroad	22, 29, 83
Study skills	13, 22, 29, 73, 81
Sustainability	70 to 71

T

Team Bath	60 to 63
Terms and conditions	142
Tuition fees	54 to 55, 82 to 83

V

Visas	72
Visit us	138 to 140

W

Wellbeing services	51
Welsh Baccalaureate	81
Widening Access	81

Y

Year abroad	22, 29, 83
-------------	------------

The information in this prospectus is correct at time of going to press (February 2022).

Our prospectus is intended to be a general guide to the courses and facilities available to students starting an undergraduate course in September 2023. The prospectus is prepared a considerable time in advance and we may make changes to our courses in response to, for example, feedback from students, developments in the field of studies, and the requirements of accrediting bodies, or any unforeseen or unavoidable circumstances.

Before making an application, you should always check our website, to ensure you have the most up-to-date information.

Our Terms and Conditions provide more details of the circumstances in which we may amend our courses and how we will keep you informed of any changes.
go.bath.ac.uk/ug-app-t-and-c

Recognition of professional qualifications

As well as being recognised as a higher academic qualification, a number of our degrees are also accredited by professional bodies in the United Kingdom. An accredited degree may entitle you to work in a specific profession within the UK, and abroad (where there are reciprocating arrangements with professional bodies in other countries).

The requirements to practise a profession vary from country to country. If you wish to practise your profession outside the United Kingdom, you are advised to confirm that the UK professional qualification you seek is valid in the country in which you are intending to work.

© University of Bath 2022

Designed and edited by the Department of Marketing,
University of Bath.

P-MC0386-0122

Open Days in 2022

You can come to a Campus Open Day or join a Virtual Open Day to find out about our courses and speak to current students about studying at Bath.

Our next Campus Open Days will take place in
June and September 2022.



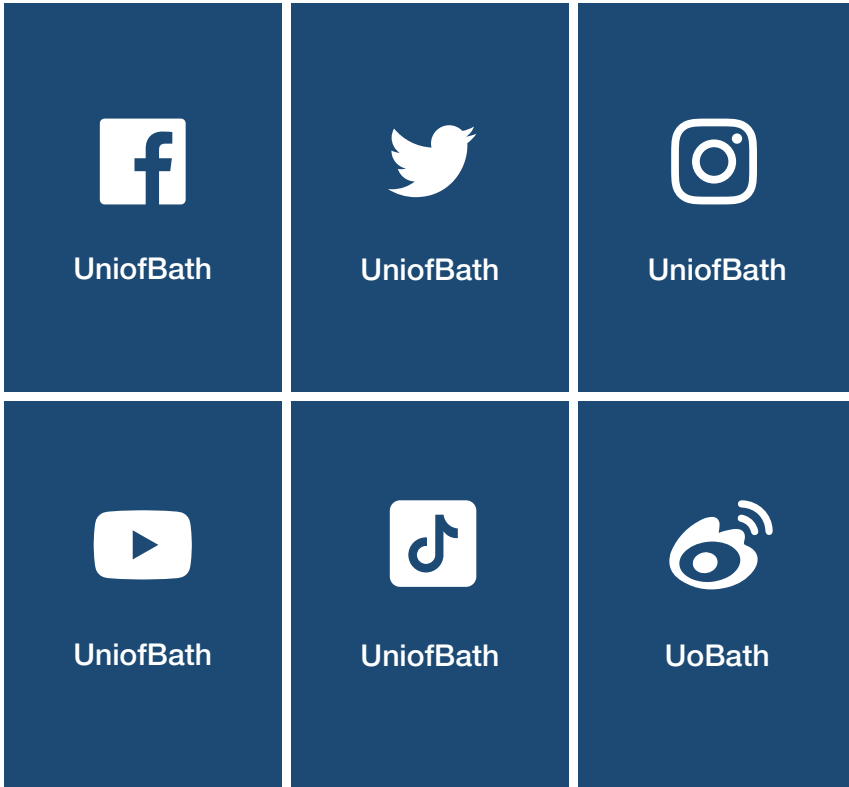
Visit go.bath.ac.uk/ug-open-days-23 to register your interest and we will be in touch when dates are confirmed.

Visit go.bath.ac.uk/ug-virtual-experience-23 to explore our campus online and find out more about studying at the University of Bath.

#BelongatBath



Connect with us



#BelongatBath

go.bath.ac.uk/study-23



UNIVERSITY OF
BATH